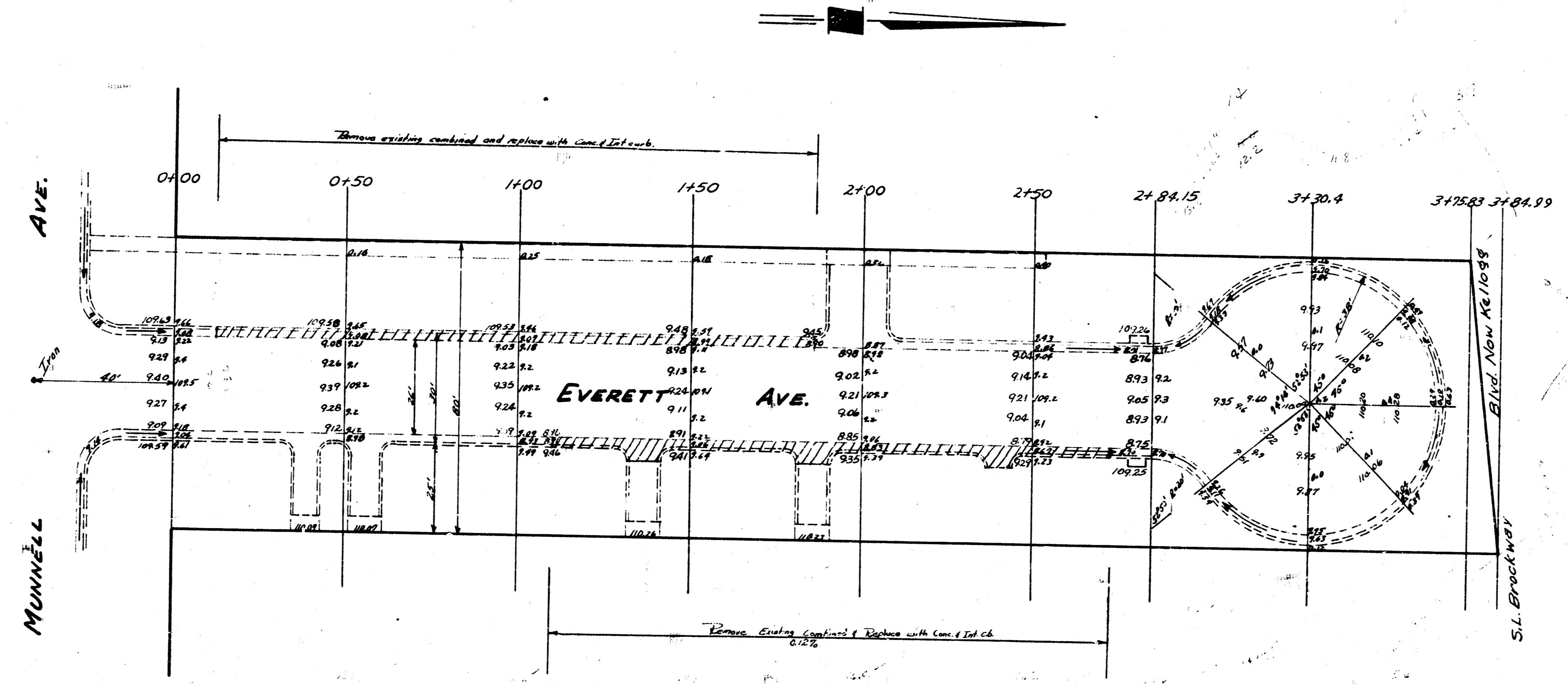


B.M. 108.32 Iron In Thimble @ Everett & N.L. McCormick
 B.M. 109.99 5" In Globe W End Of N.W. Rod. Munnell & Everett
 Stationing & Base Line E

Survey
 Plan
 Exp.
 Checked



EVERETT
 N.L. MUNNELL To S.L. BROCKWAY BLVD
 26' CONC.
CITY OF WICHITA, KAN.
 B.E. SMITH CITY ENGINEER
 FEB. 1956 Proj No C/11-219

