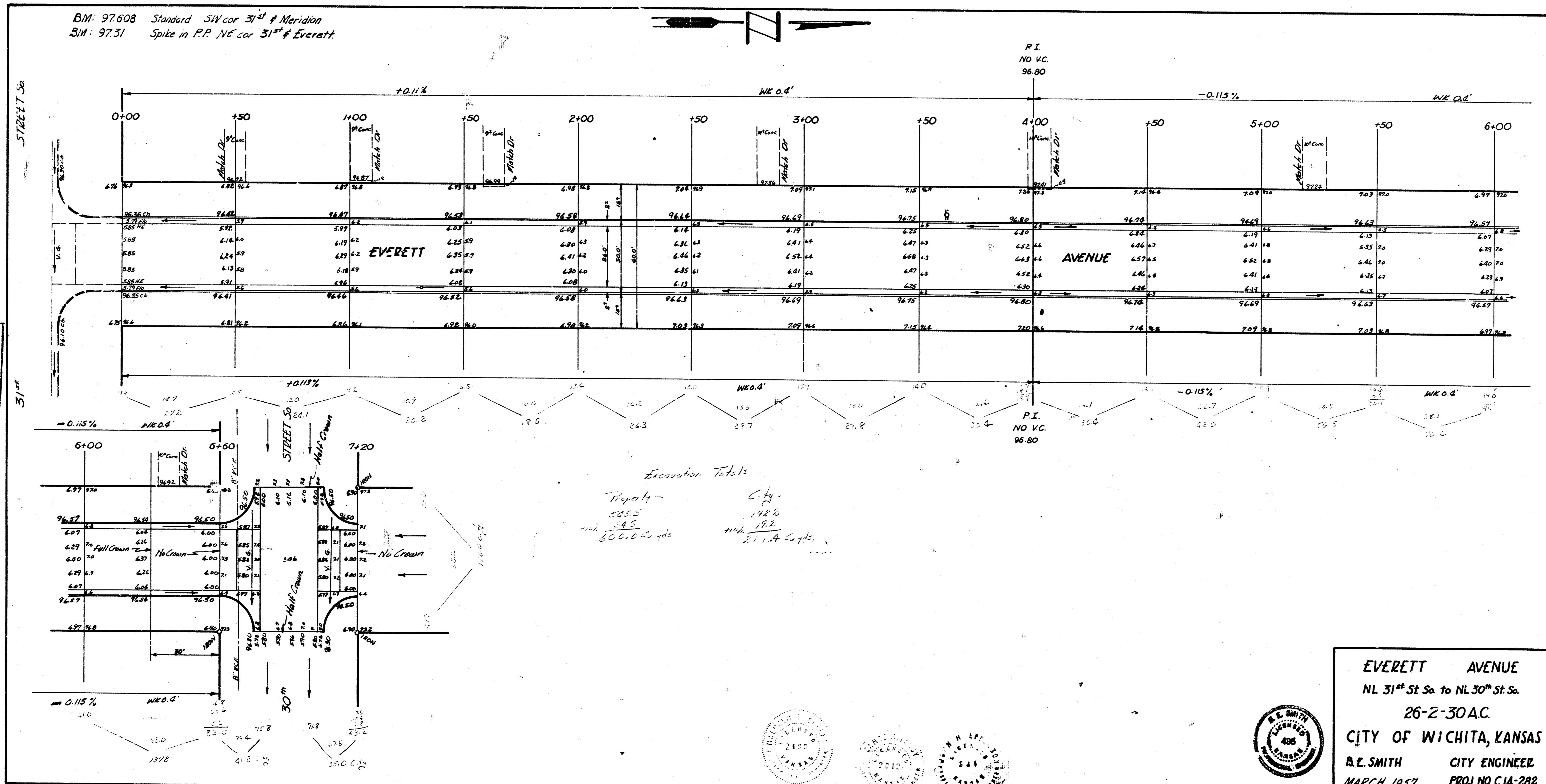
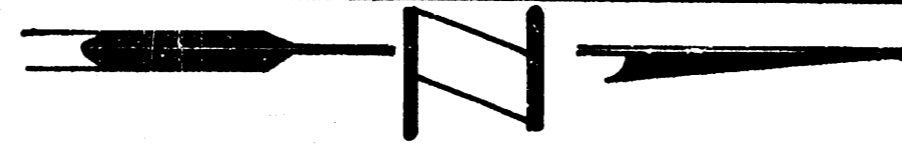


BM: 97.608 Standard SW cor 31st & Meridian
 BM: 97.31 Spike in P.P. NE cor 31st & Everett



Survey by M. W. Z. B. M. W. Z. B. M. W. Z. B.
 Checked by M. W. Z. B. M. W. Z. B. M. W. Z. B.

Excavation Totals
 Right of Way - 585.5
 City - 192.2
 600.0 cu yds. 277.4 cu yds.

EVERETT AVENUE
 NL 31st St. Sa. to NL 30th St. Sa.
 26-2-30A.C.
CITY OF WICHITA, KANSAS
 R. E. SMITH CITY ENGINEER
 MARCH 1937 PROJ NO C14-282

