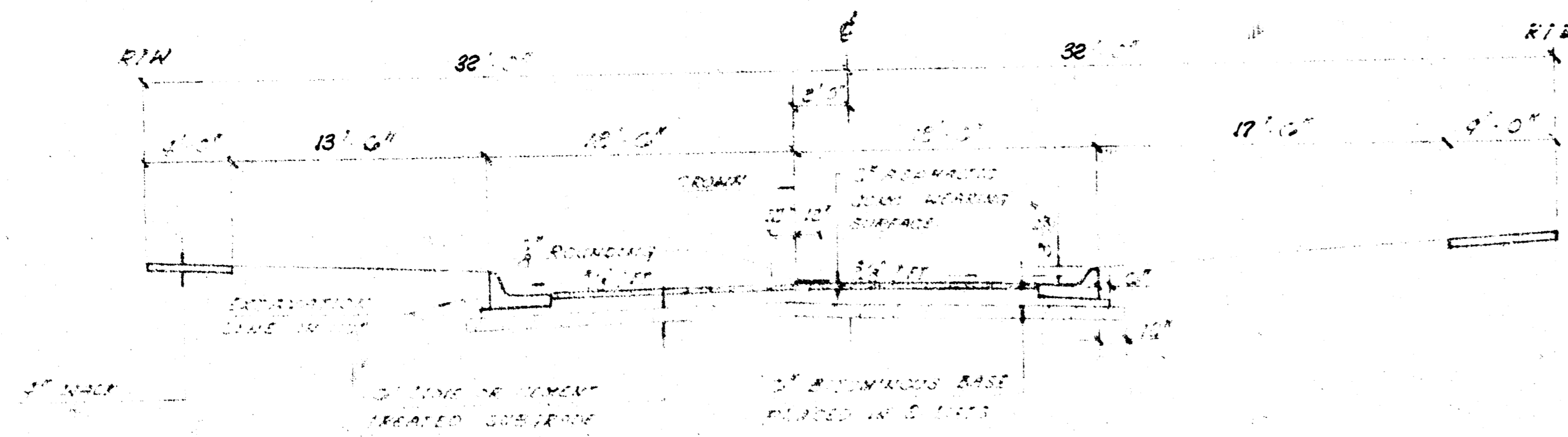
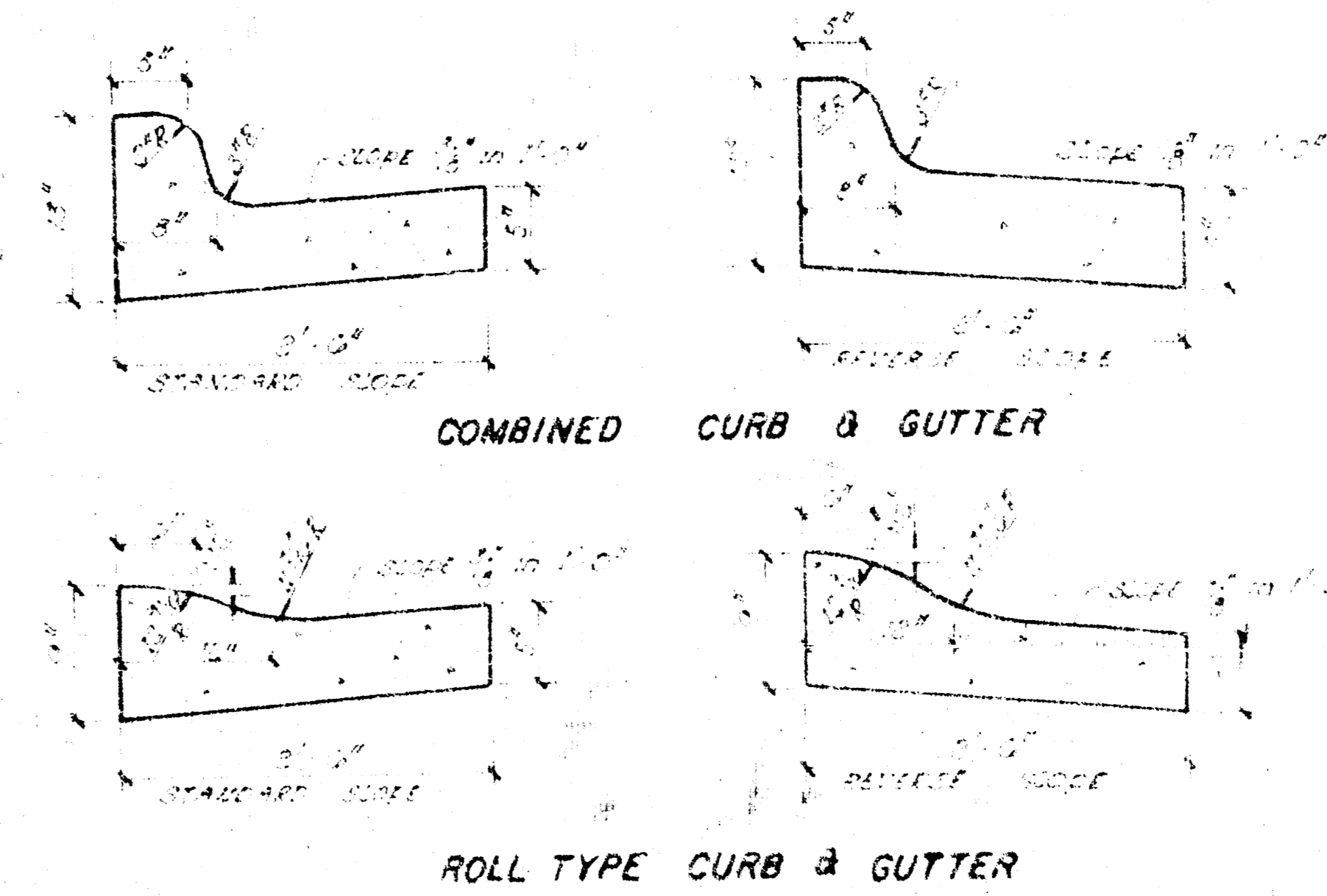


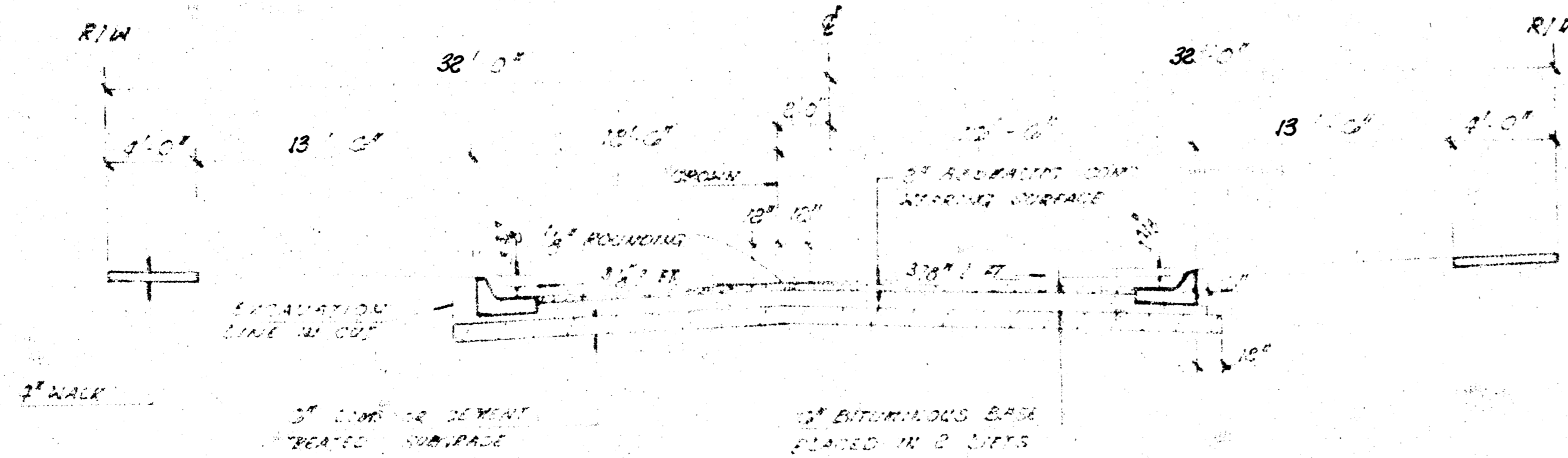
EVERGREEN
N.L. 17TH ST. TO S.L. 19TH ST.



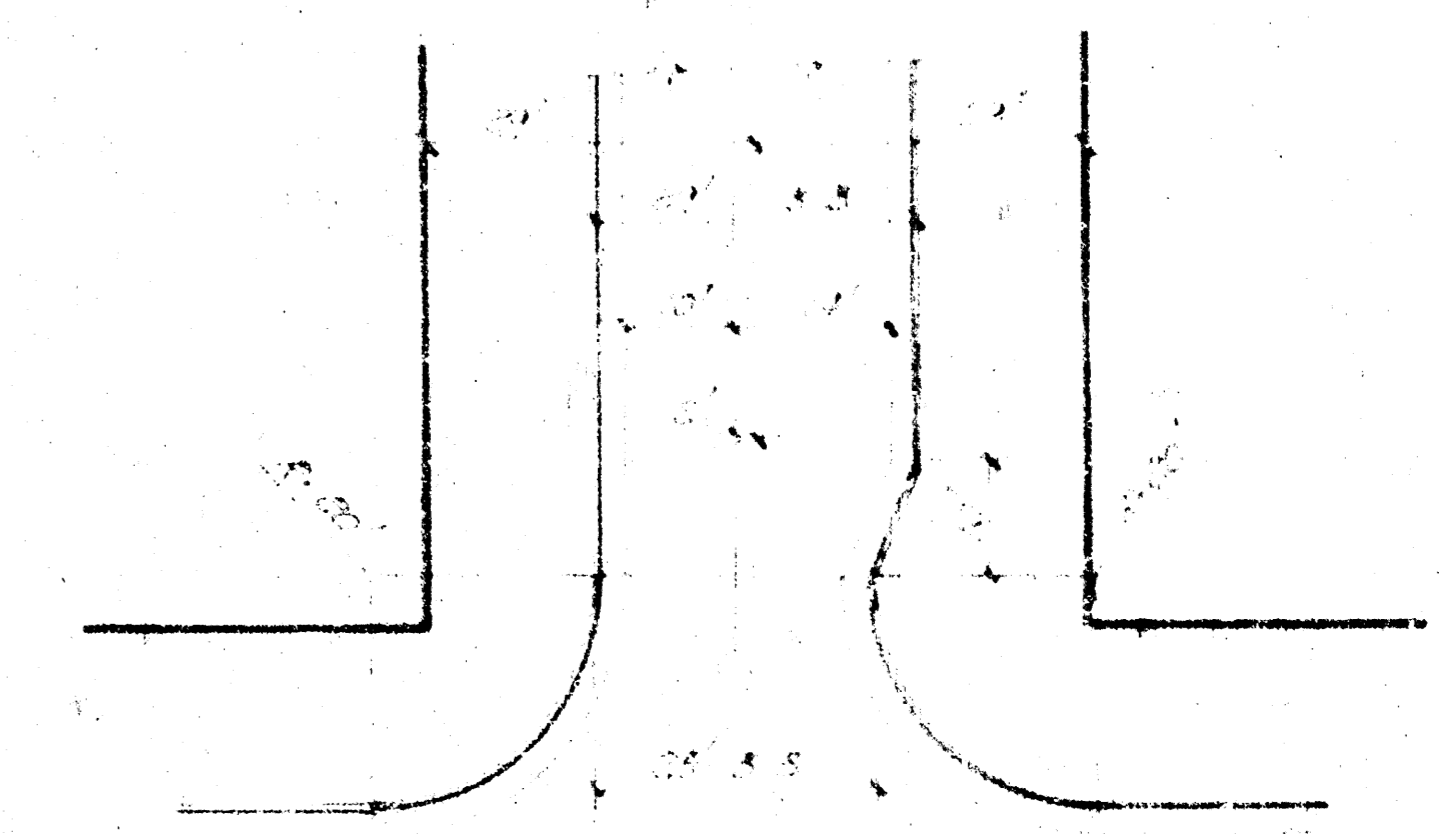
TYPICAL 25' B-B SECTION



TYPICAL RESIDENTAL SECTIONS
FOR CROWN OFFSET - 64' R/W



TYPICAL 29' B-B SECTION
w/ PARKING ON ONE SIDE



PLAN VIEW (TYPICAL)

GENERAL NOTES

1. A DALK QUANT OF EMULSIFIED ASPHALT (SS - 10) SHALL BE APPLIED AT AN APPROXIMATE RATE 0.15 GALLONS PER SQUARE YARD BETWEEN LIFTS OF ASPHALTIC MATERIALS WHEN ORDERED BY THE ENGINEER. JACK COAT #110 NOT BE PAID FOR DIRECTLY AND SHALL BE CONSIDERED AS SUBSIDIARY TO PRICE BID FOR ASPHALTIC PAVEMENT.
2. BITUMINOUS BASE AND ASPHALTIC CONCRETE HEARING SURFACE SHALL BE PLACED WITH A LAYDOWN MACHINE HAVING AUTOMATIC ELECTRONIC CONTROLS FOR CROWN AND GRADE. CONSTRUCTION RIBS IN EACH LIFT SHALL BE SPACED AT A MINIMUM DISTANCE OF 1 FOOT WITH JOINTS IN PRECEDING LIFTS AND SUCH THAT A JOINT WILL BE CONSTRUCTED ON THE PAVEMENT CENTERLINE IN THE TOP LIFT.
3. THE A.C. PAVEMENT BETWEEN COMBINED CURB AND GUTTER SHALL BE PAID AS SQUARE YARDS 3" A.C. PAVEMENT ON BITUMINOUS BASE. THE BITUMINOUS BASE UNDER THE COMBINED CURB AND GUTTER SHALL BE PAID AS SQUARE YARDS 3" BITUMINOUS BASE.
4. SIDEWALKS INDICATED ON THE TYPICAL SECTION ARE FOR LOCATION ON THAT SECTION. SIDEWALKS SHALL NOT BE CONSTRUCTED ON THIS PROJECT.
5. CONTRACTION JOINTS MAY BE CONSTRUCTED IN CURBS BY SAWING WITH AN APPROVED CONCRETE SAW. THE SAW SHALL EXTEND THROUGH THE CURB TO THE PAVEMENT. SAWED CONTRACTION JOINTS SHALL HAVE A MAXIMUM SPACING OF 10'.
6. INTERCAL CURB SHALL BE TIED TO THE PAVEMENT BASE WITH SMOOTH DEFORMED BARS SPACED AT 2' - 0" INTERVALS. THESE BARS SHALL NOT BE LESS THAN 3/8" OR MORE THAN 3/4" IN DIAMETER.
7. TRANSITION CURB SHALL BE PAID AS ROLL-TYPE CURB, CURB AND GUTTER.



CITY OF WICHITA, KANSAS

DEPARTMENT OF PUBLIC WORKS AND ENGINEERING

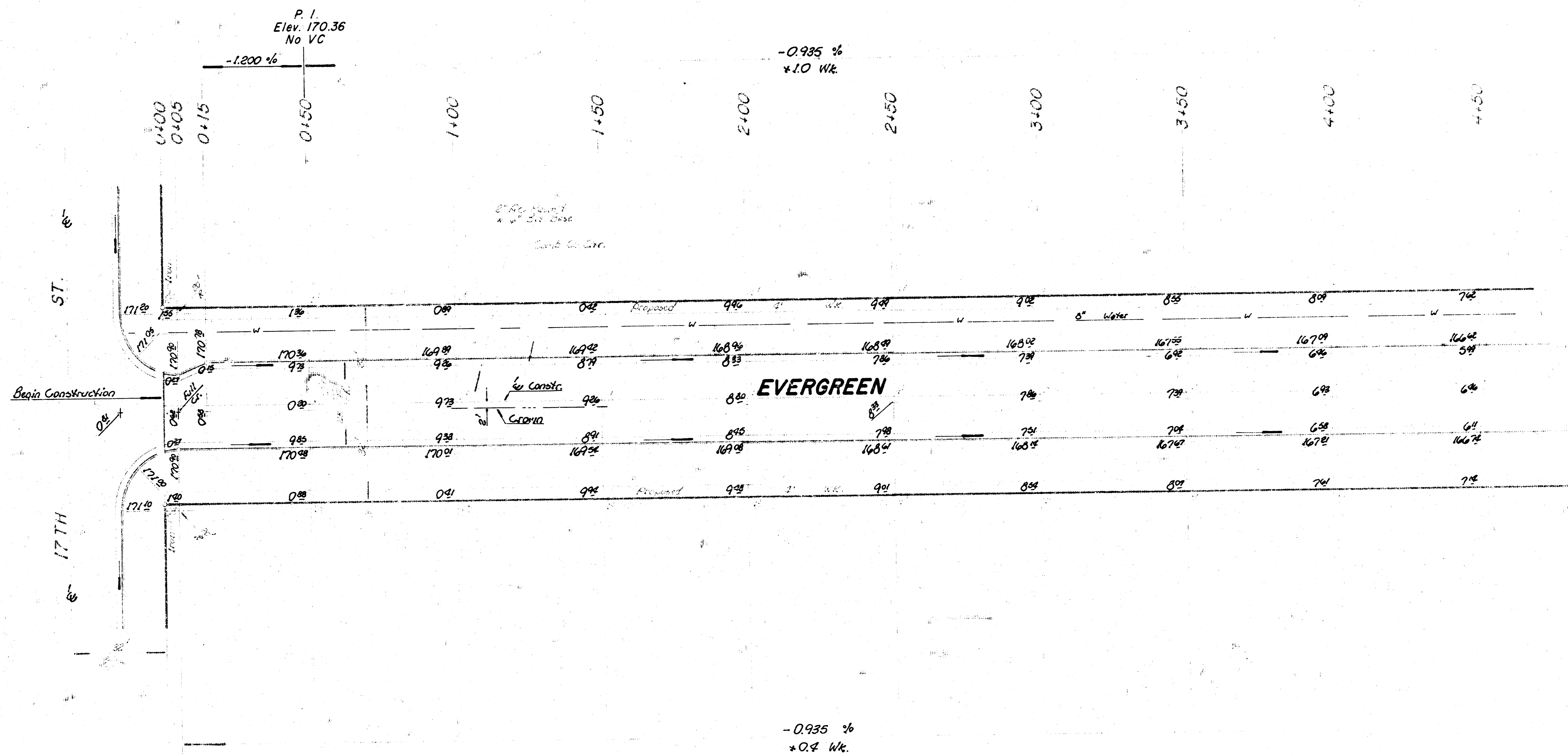
R.W. LINN CITY ENGINEER

DATE: PROJ. NO. 472-76-245-80737-000-000-001

FILMED FROM THE BEST AVAILABLE COPY

B.M. 1718 City S.W. cor. of E. & 34th S. of 19th Sec. on Tyler & 1718 S.
 B.M. 1719 R.R. cor. E. P. RR SW cor. Tyler & 1718 1st PP N of 1700 S. Tyler.

Baseline is $\frac{1}{4}$ Evergreen.

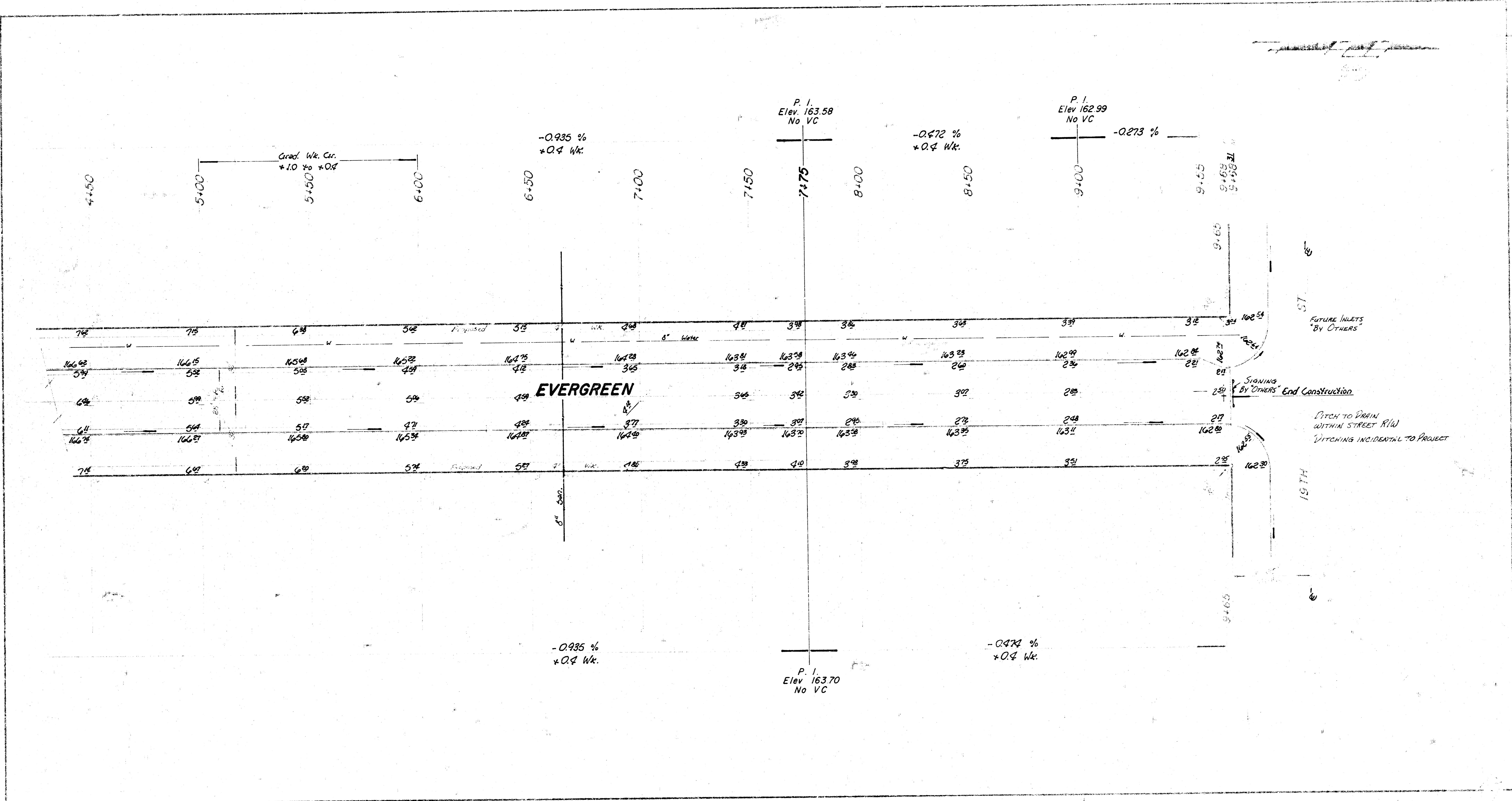


Survey Checked by: W. J. ROSE
 Plan: M. W. H. R.
 Exp. Checked by: _____

Note -
 Ties to be taken & any 'irons' moved or destroyed during construction shall be replaced.
 No more than 24 20' of approaches or equivalent to be constructed on this project.

Earthwork Quantities.
 Excavation = 2051[±] cy Comp. Fill = 0
 +10% = 205[±] cy
 Total = 2257[±] cy
 Manipulation = 3326[±] cy

EVERGREEN
 721 17th St. to 32nd St. on
 20th St. & 10th St. on W. 20th St. on
 City of Wichita, KS.
 P. M. L. S. Eng. No. 10
 412 W. 24th St. 316-220-1111
 Date _____



FILMED FROM THE BEST AVAILABLE COPY