

SAYLER ADDITION STREET IMPROVEMENTS

EVERGREEN COURT

PROJECT NO. 472-81828-001

INDEX CODE 760801

CITY OF WICHITA, KANSAS
MICHAEL E. LINDEBAK, CITY ENGINEER

APRIL, 1988

GENERAL NOTES

1. CONTRACTOR WILL BE REQUIRED TO PROVIDE A MINIMUM ADVANCE NOTICE OF TWENTY-FOUR (24) HOURS TO UTILITY COMPANIES PRIOR TO STARTING ANY EXCAVATION AS FOLLOWS:

KANSAS ONE-CALL	1-87-2470
THE CONTRACTOR MUST NOTIFY THE FOLLOWING IN CASE OF AN EMERGENCY:	
CABLEVISION	262-4270 OR 263-2061
KUL GAS SERVICE COMPANY	263-7511
KANSAS GAS & ELECTRIC	264-1141
ARKLA GAS COMPANY	342-8356 OR 263-8161
SOUTHWESTERN BELL TELEPHONE CO.	1-573-2511
CITY OF WICHITA WATER DEPARTMENT	268-4900
CITY OF WICHITA SEWER MAINTENANCE	268-4071

2. UTILITY SERVICE LINES, POLES, VALVE BOXES, METERS, AND STRUCTURES ARE TO BE ADJUSTED AS NECESSARY BY OTHERS PRIOR TO OR DURING CONSTRUCTION UNLESS THE PLANS SPECIFICALLY CALL FOR THEIR ADJUSTMENT BY THE CONTRACTOR. EXISTING UTILITIES AND THEIR LOCATION, AS SHOWN ON THE PLANS, REPRESENT THE BEST INFORMATION OBTAINABLE FOR DESIGN. LOCATION INFORMATION HAS BEEN OBTAINED FROM THE VARIOUS UTILITY COMPANIES AND IS EITHER FROM COMPANY RECORD DRAWINGS OR CURRENT FIELD LOCATIONS. THE PLAN LOCATIONS SHOWN ARE NOT GUARANTEED. ADDITIONAL EXISTING UTILITIES MAY ALSO BE ENCOUNTERED. THE CONTRACTOR WILL BE REQUIRED TO WORK AROUND EXISTING UTILITIES WITHIN THE RIGHT-OF-WAY WHICH DO NOT CONFLICT WITH PROPOSED CONSTRUCTION.

3. THE CONTRACTOR WILL BE PERMITTED TO BID ONLY ONE OF THE ALTERNATE TYPES OF SUBGRADE TREATMENT. THE TYPE BID BY THE SUCCESSFUL BIDDER WILL BE THE TYPE OF SUBGRADE TREATMENT USED TO CONSTRUCT THE PROJECT.

4. THIS PROJECT DOES NOT INCLUDE ANY PROVISIONS FOR CONSTRUCTION OF DRIVEWAYS.

5. LIMITS OF EARTHWORK SHALL MATCH EXISTING GROUND ELEVATIONS AT THE RIGHT-OF-WAY LINE UNLESS OTHERWISE NOTED ON THE PLANS WITH A NEW FINISHED GRADE ELEVATION. WHEN A NEW FINISHED GRADE ELEVATION IS SHOWN, THE EARTHWORK SHALL EXCEED ONE FOOT BEYOND THE RIGHT-OF-WAY LINE AND THEN SLOPED UP OR DOWN USING PERMISSIBLE SLOPES TO MATCH THE EXISTING GROUND SURFACE.

6. THE CITY OF WICHITA'S SEWER MAINTENANCE DIVISION OF THE DEPARTMENT OF WATER AND WASTE POLLUTION CONTROL HAS TELEPHONED SEWERS WITHIN THE LIMITS OF THE PROJECT AND HAVE FOUND NO SEWERS REQUIRING REPAIR. THE DIVISION SHALL BE NOTIFIED AND ADVISED THE OPPORTUNITY TO RELOCATE SEWER LINES AFTER SUBGRADE WORK HAS BEEN COMPLETED AND PRIOR TO PAVEMENT CONSTRUCTION TO DETERMINE IF SUCH SEWER LINES HAVE BEEN DAMAGED BY THE CONTRACTOR'S OPERATIONS. DAMAGED SEWER LINES SHALL BE REPAIRED BY THE CONTRACTOR, AS DIRECTED BY THE ENGINEER, AT THE CONTRACTOR'S EXPENSE. TELEVISION LOSS ARE AVAILABLE FOR INSPECTION BY THE CONTRACTOR DURING NORMAL OFFICE HOURS AT THE SEWER MAINTENANCE DIVISION'S OFFICE AT CITY HALL.

7. THE CONTRACTOR SHALL NOTIFY PIPELINE COMPANIES AT LEAST 24 HOURS IN ADVANCE OF ANY WORK BEING PERFORMED ACROSS AND/OR ADJACENT TO PIPELINES.

8. TREES AND SHRUBS IN PUBLIC RIGHT-OF-WAY WHICH ARE IN DIRECT CONTACT WITH PROPOSED NEW CONSTRUCTION SHALL BE REMOVED BY THE CONTRACTOR WITH THE ENGINEER'S APPROVAL. TREES AND SHRUBS WHICH ARE NOT IN DIRECT CONTACT WITH PROPOSED NEW CONSTRUCTION SHALL BE SAVED AND PROTECTED FROM DAMAGE.

9. RUBBLE FROM THE REMOVAL OF MISCELLANEOUS STRUCTURES AND EXCESS EXCAVATION WHICH IS TO BE WASTED SHALL BE DISPOSED OF ON SITES TO BE PROVIDED BY THE CONTRACTOR. THESE SITES SHALL BE APPROVED BY THE ENGINEER AS TO SUITABILITY, APPEARANCE AND SITE LOCATION. LOCATION THAT, IN THE OPINION OF THE ENGINEER, WILL LEAVE AN UNSIGHTLY APPEARANCE WILL NOT BE APPROVED.

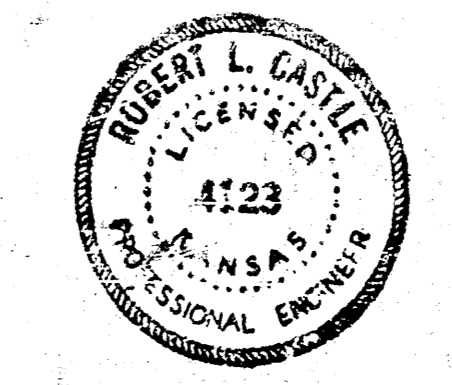
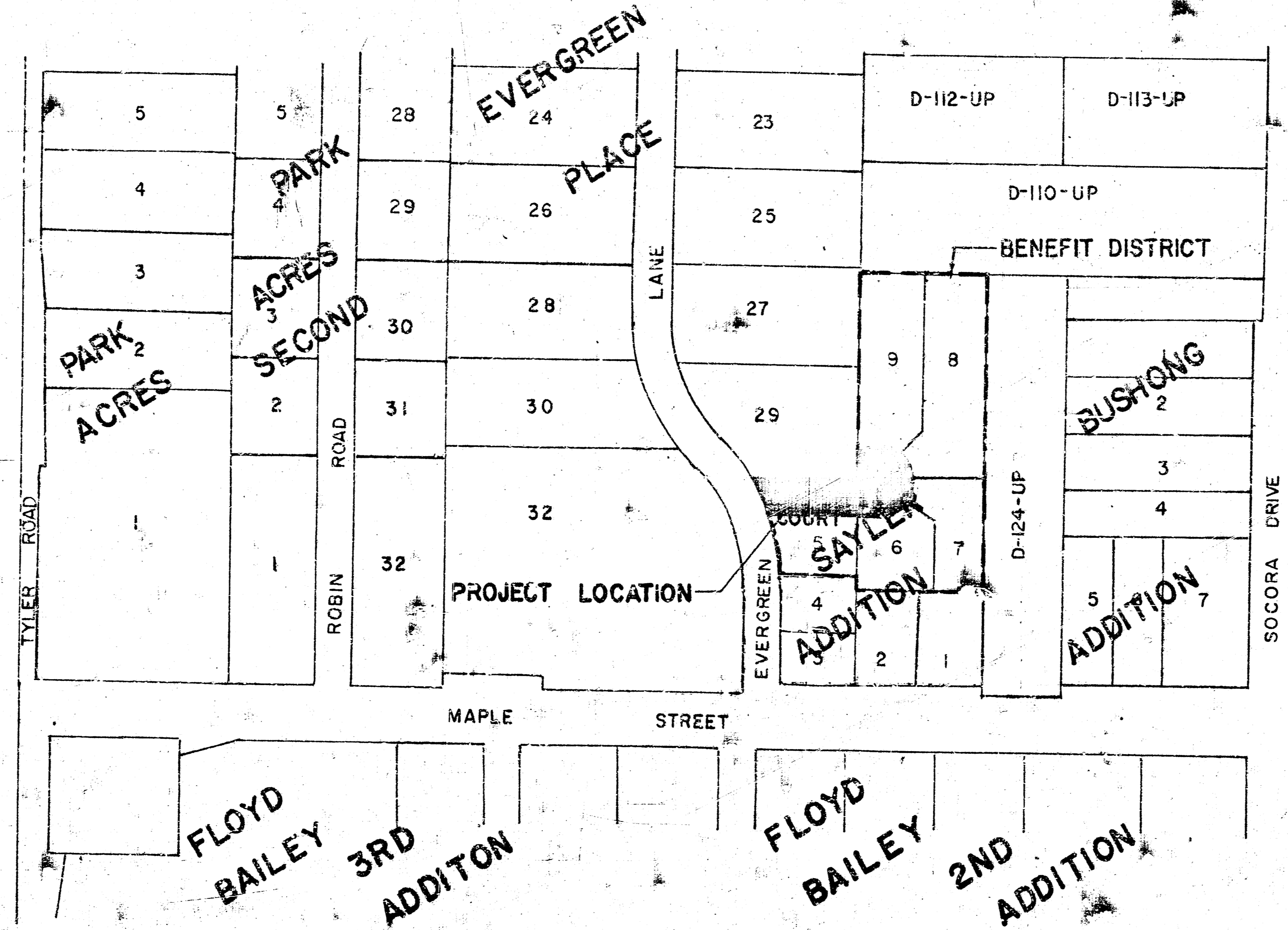
10. THE CONTRACTOR SHALL BE RESPONSIBLE FOR PRESERVING PROPERTY IRONS. THE CONTRACTOR WILL BE REQUIRED TO RE-ESTABLISH ANY PROPERTY IRONS WHICH ARE DAMAGED OR DESTROYED BY HIS CONSTRUCTION OPERATIONS. SUCH IRONS SHALL BE RE-ESTABLISHED BY A LICENSED LAND SURVEYOR OR A LICENSED PROFESSIONAL ENGINEER IN ACCORDANCE WITH STATE LAWS.

11. CONTRACTOR SHALL GIVE PROPERTY OWNERS ADJUTING THIS PROJECT, WHOSE YARDS WILL BE LOWER THAN THE NEW FINISHED GRADE ELEVATIONS AT THE RIGHT-OF-WAY LINE AN OPPORTUNITY TO UTILIZE EXCESS EXCAVATION MATERIAL FROM THE PROJECT TO REGRADE THEIR YARDS TO DRAIN TO THE NEW PAVEMENT. CONTRACTOR WILL BE REQUIRED TO DUMP AND SPREAD THIS EXCESS MATERIAL AS REQUIRED BY THE SPECIFICATIONS WHEN REQUESTED BY THE PROPERTY OWNER. THE CONTRACTOR SHALL CERTAIN THAT A DIRT ORDER FORM HAS BEEN PROPERLY EXECUTED BY THE PROPERTY OWNER BEFORE ANY SUCH EXCESS MATERIAL IS DELIVERED TO SUCH PROPERTIES.

12. ALL ELEVATIONS SHOWN ARE CITY OF WICHITA DATUM (USGS-1187.4 - CITY DATUM).

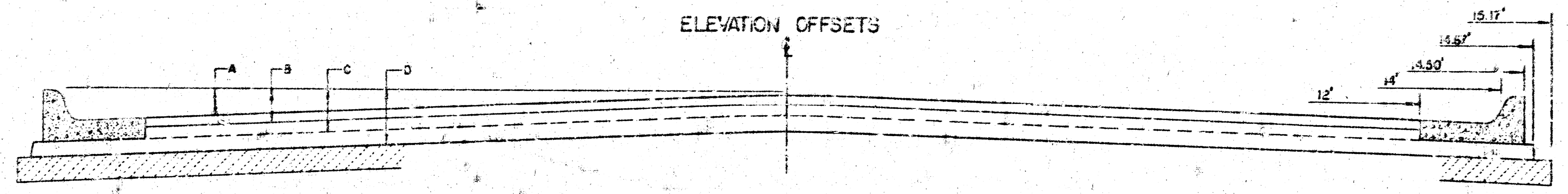
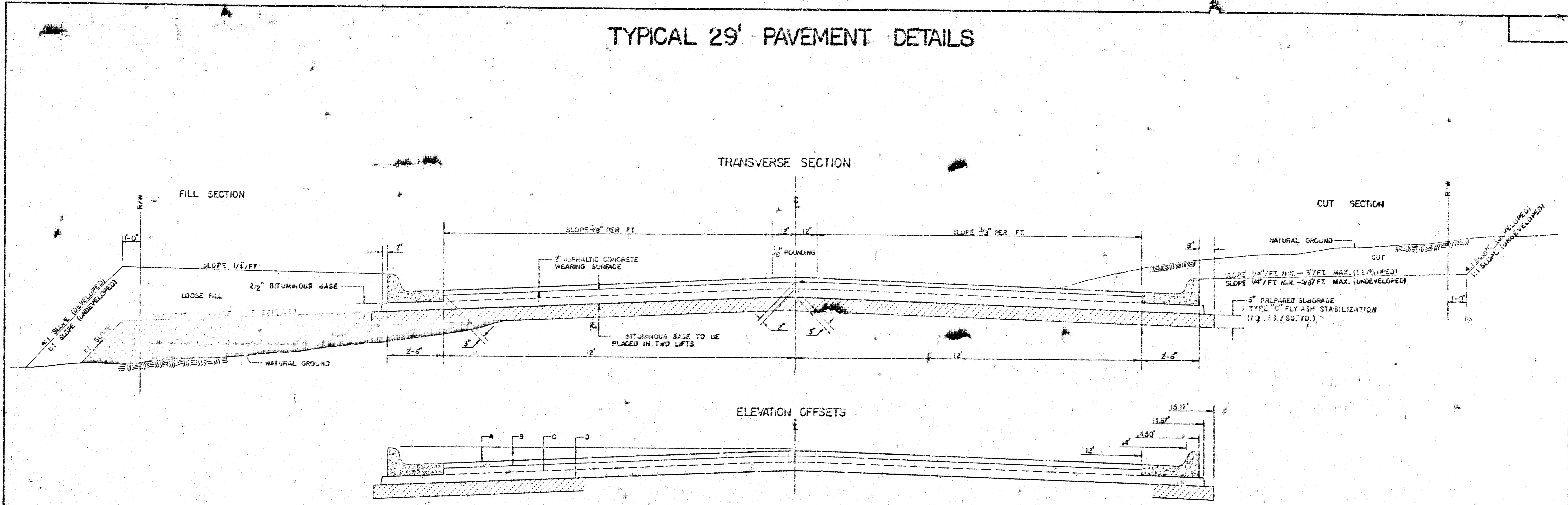
DRAWING INDEX

SHEET	TITLE
1	MAP AND BENEFIT DISTRICT
2	TYPICAL 29' PAVEMENT DETAILS
3	PLAN EVERGREEN COURT
4	CROSS SECTION EVERGREEN COURT

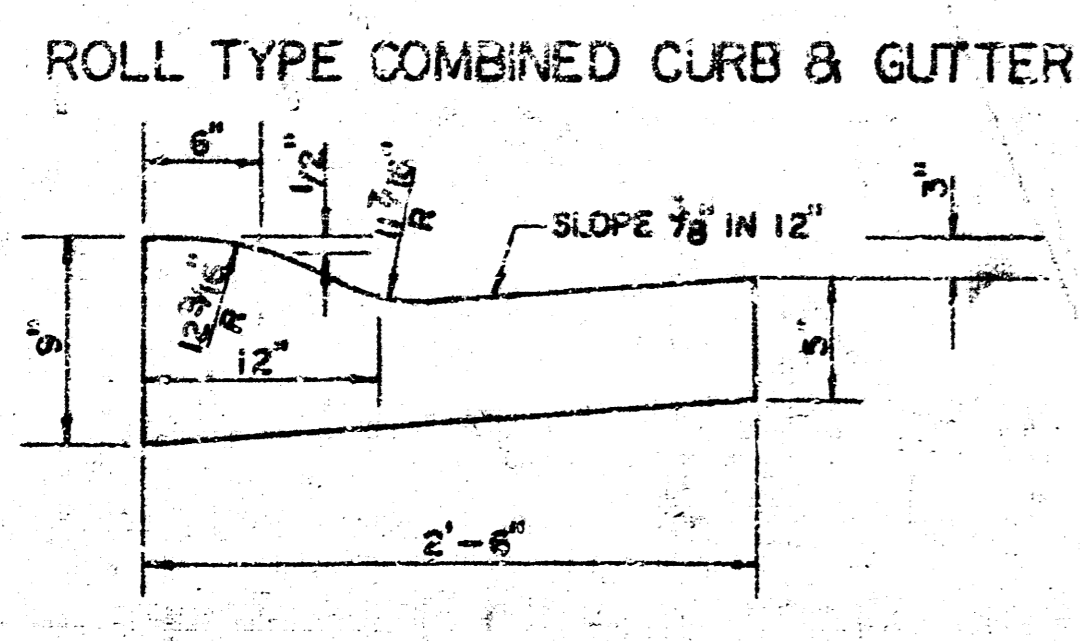
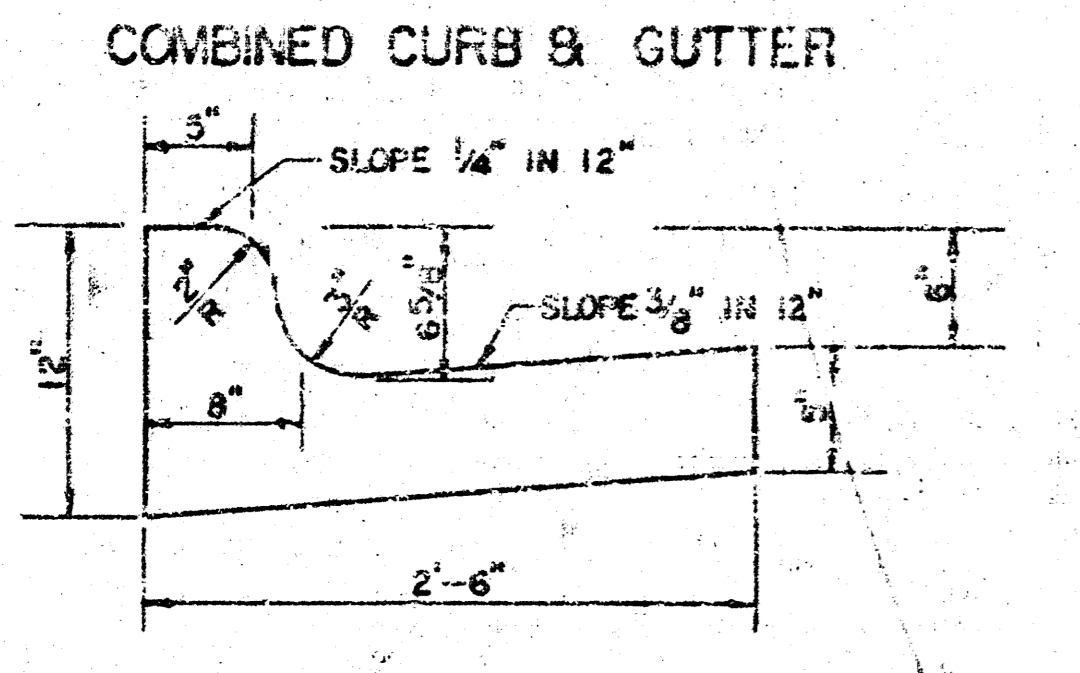


EARL M. SAYLER STREET IMPROVEMENTS	
MAP AND BENEFIT DISTRICT SAYLER ADDITION	
PROJ. NO. 472-81828-001	
CASTLE & ASSOCIATES ENGINEERS WICHITA, KANSAS	DATE APRIL 1988
DR. LUK OR LUK OR FRANK	DWG FILE NO. 8740-D-80,075
APPROVAL	SHEET NO. 1 OF 4

TYPICAL 29' PAVEMENT DETAILS



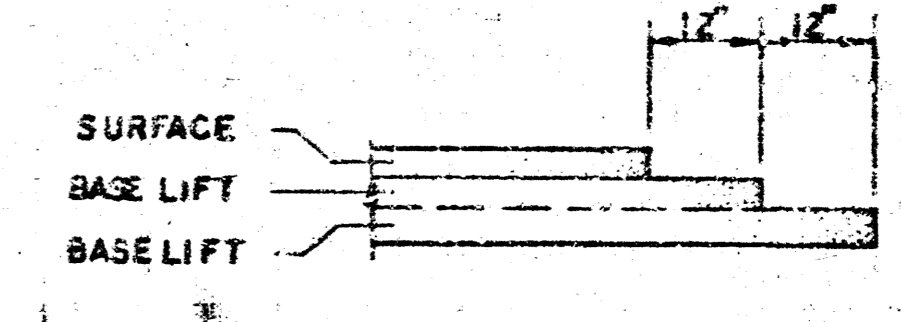
	DISTANCE FROM CENTERLINE (LT. & RT.)												
	0'	2'	4'	6'	7'	8'	10'	12'	14'	14.5'	14.67'	15.17'	
A: TOP OF CURBS TO TOP OF SURFACE LIFT	0.13	0.18	0.24	0.30	0.33	0.36	0.43	0.49	—	—	—	—	
B: TOP OF CURBS TO TOP OF UPPER BASE LIFT	0.30	0.35	0.41	0.47	0.50	0.52	0.60	0.66	—	—	—	—	
C: TOP OF CURBS TO TOP OF LOWER BASE LIFT	0.47	0.52	0.60	0.68	0.71	0.73	0.83	0.90	0.98	1.00	1.01	—	
D: TOP OF CURBS TO TOP OF SUBGRADE	0.72	0.77	0.84	0.91	0.94	0.98	1.05	1.12	1.18	1.21	1.21	1.23	



GENERAL NOTES

- 1) THE ASPHALTIC CONCRETE PAVEMENT BETWEEN THE COMBINED CURB AND GUTTER SHALL BE PAID AS SQUARE YARDS OF 7" ASPHALTIC CONCRETE (5" BITUMINOUS BASE).
- 2) THE BITUMINOUS BASE UNDER AND BEHIND THE COMBINED CURB AND GUTTER SHALL BE PAID AS SQUARE YARDS OF 2 1/2" BITUMINOUS BASE.
- 3) A TACK COAT OF EMULSIFIED ASPHALT (SS-1H OR CSS-1H) SHALL BE APPLIED AT AN APPROXIMATE RATE OF 0.05 GALLONS PER SQUARE YARD BETWEEN EACH LIFT OF ASPHALTIC MATERIAL.
- 4) BITUMINOUS BASE AND ASPHALTIC CONCRETE WEARING SURFACE SHALL BE PLACED WITH A LAYDOWN MACHINE HAVING AUTOMATIC CONTROLS FOR LINE AND GRADE.
- 5) CONSTRUCTION JOINTS IN EACH LIFT SHALL BE STAGGERED A MINIMUM DISTANCE OF ONE (1) FOOT FROM JOINTS IN PRECEDING LIFTS AND PLACED SO THAT A JOINT WILL BE CONSTRUCTED ON THE CENTERLINE OF THE TOP LIFT.
- 6) CONTRACTOR TO BID ONLY ONE SLEEPER TREATMENT ALTERNATE WHEN ALTERNATES ARE PROVIDED IN THE PROPOSAL AND CONTRACT. THE ALTERNATE CHOSEN BY THE SUCCESSFUL BIDDER SHALL BE USED IN CONSTRUCTION THIS PROJECT.

TRANSVERSE CONSTRUCTION JOINTS



TRANSVERSE CONSTRUCTION JOINTS SHALL BE CONSTRUCTED IN FLEXIBLE BASE PAVEMENTS AT LOCATIONS WHERE PAVEMENT JOINTS EXISTING FLEXIBLE BASE PAVEMENT AS SHOWN BY THE DETAIL. ALL COSTS ASSOCIATED WITH THE CONSTRUCTION OF THE TRANSVERSE JOINT SHALL BE INCLUDED IN THE BID PRICE FOR SQUARE YARDS 7" ASPHALTIC CONCRETE (5" BITUMINOUS BASE).

8740-D-63,077 SHEET 2 OF 4
7 INCH RESIDENTIAL ASPHALTIC CONCRETE PAVEMENT WITH 5 INCH BITUMINOUS BASE
CITY OF WICHITA, KANSAS
 PROJECT NUMBER
 PROJ. NO. 472-81828-001

10 1 5 4

BENCHMARK NO. 1 - RAILROAD SPIKE IN UTILITY POLE ON THE NORTH SIDE OF MAPLE AT SOCCORA
ELEV. - 142.99 CITY DATUM

BENCHMARK NO. 2 - TOP OF 1" IRON PIPE 20' SOUTH OF THE S.E. COR. OF LOT 3, SAYLER ADDITION.
ELEV. - 142.54 CITY DATUM

SCALE: 1" = 20'

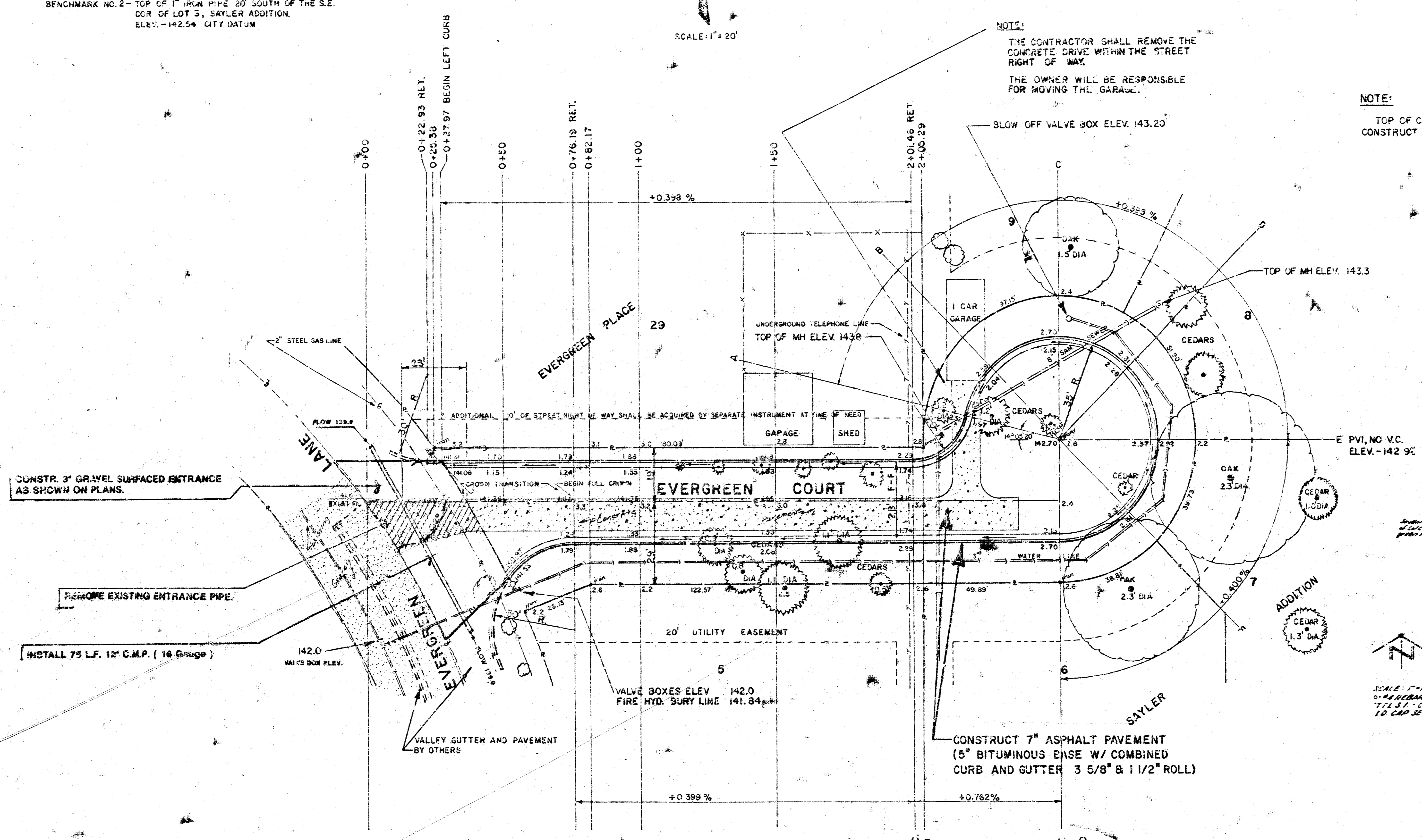
NOTES:

THE CONTRACTOR SHALL REMOVE THE CONCRETE DRIVE WITHIN THE STREET RIGHT OF WAY.

THE OWNER WILL BE RESPONSIBLE FOR MOVING THE GARAGE.

NOTE:

TOP OF CURB ELEVATIONS ARE FOR FULL HEIGHT CURB. CONSTRUCT ROLL TYPE CURB (3 5/8" & 1 1/2" ROLL)



CONSTR. 3" GRAVEL SURFACED ENTRANCE AS SHOWN ON PLANS.

REMOVE EXISTING ENTRANCE PIPE.

INSTALL 75 LF. 12" C.M.P. (16 Gauge)

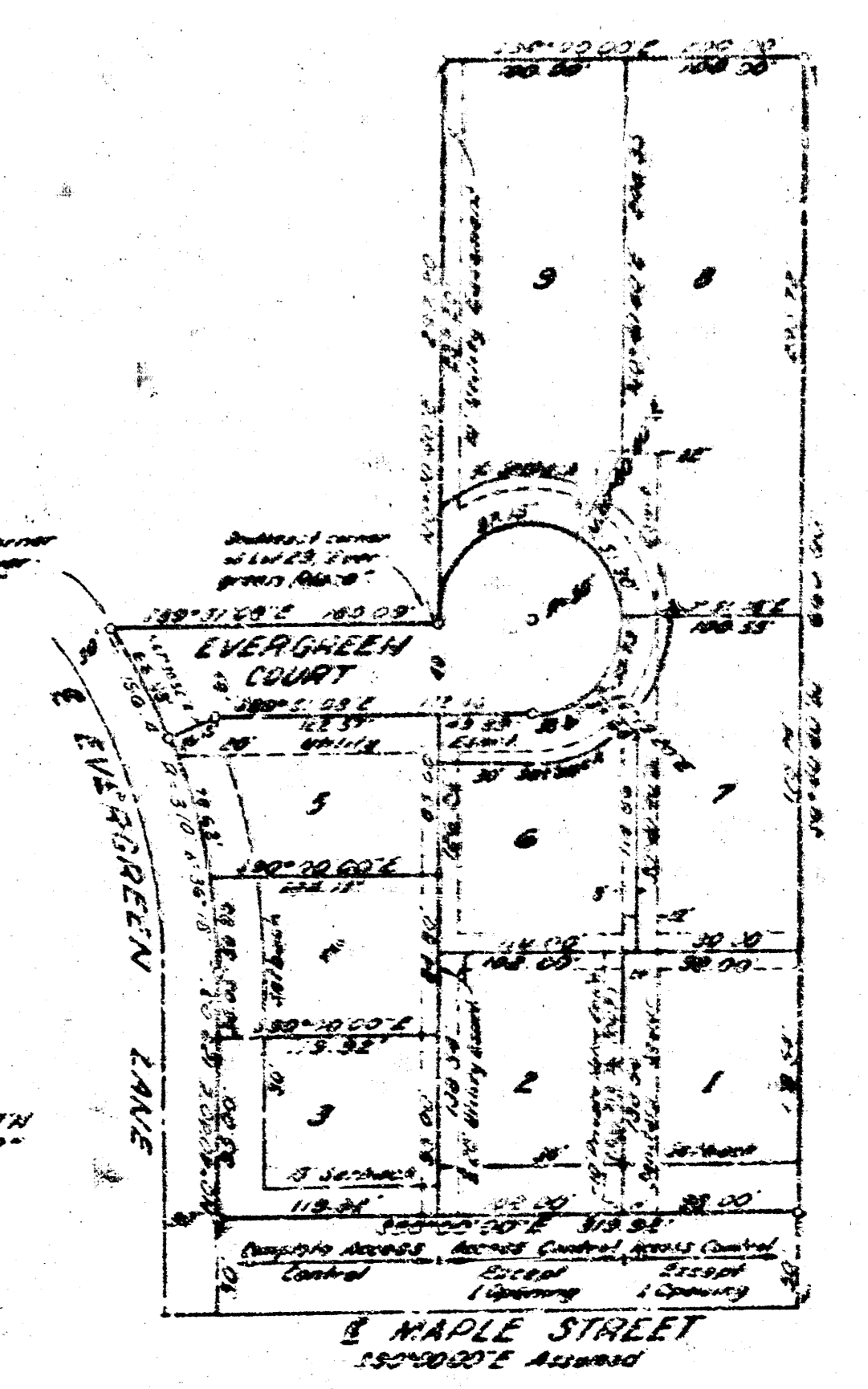
VALLEY GUTTER AND PAVEMENT BY OTHERS

CONSTRUCT 7" ASPHALT PAVEMENT (5" BITUMINOUS BASE W/ COMBINED CURB AND GUTTER 3 5/8" & 1 1/2" ROLL)

NOTE: CONSTRUCT 100 LINEAL FEET OF VEE DITCH SOUTH OF NEW 12" ENTRANCE PIPE TO DRAIN WATER FROM PAVEMENT. DITCH SHALL HAVE 3 TO 1 SLOPES AND A BOTTOM ELEVATION OF 139.0. GRADE DITCH NORTH OF PIPE TO DRAIN TO PIPE.

EXCAVATION	455.1
+10%	45.5
TOTAL	500.6

MANIPULATION 808.8 SQ. YDS.



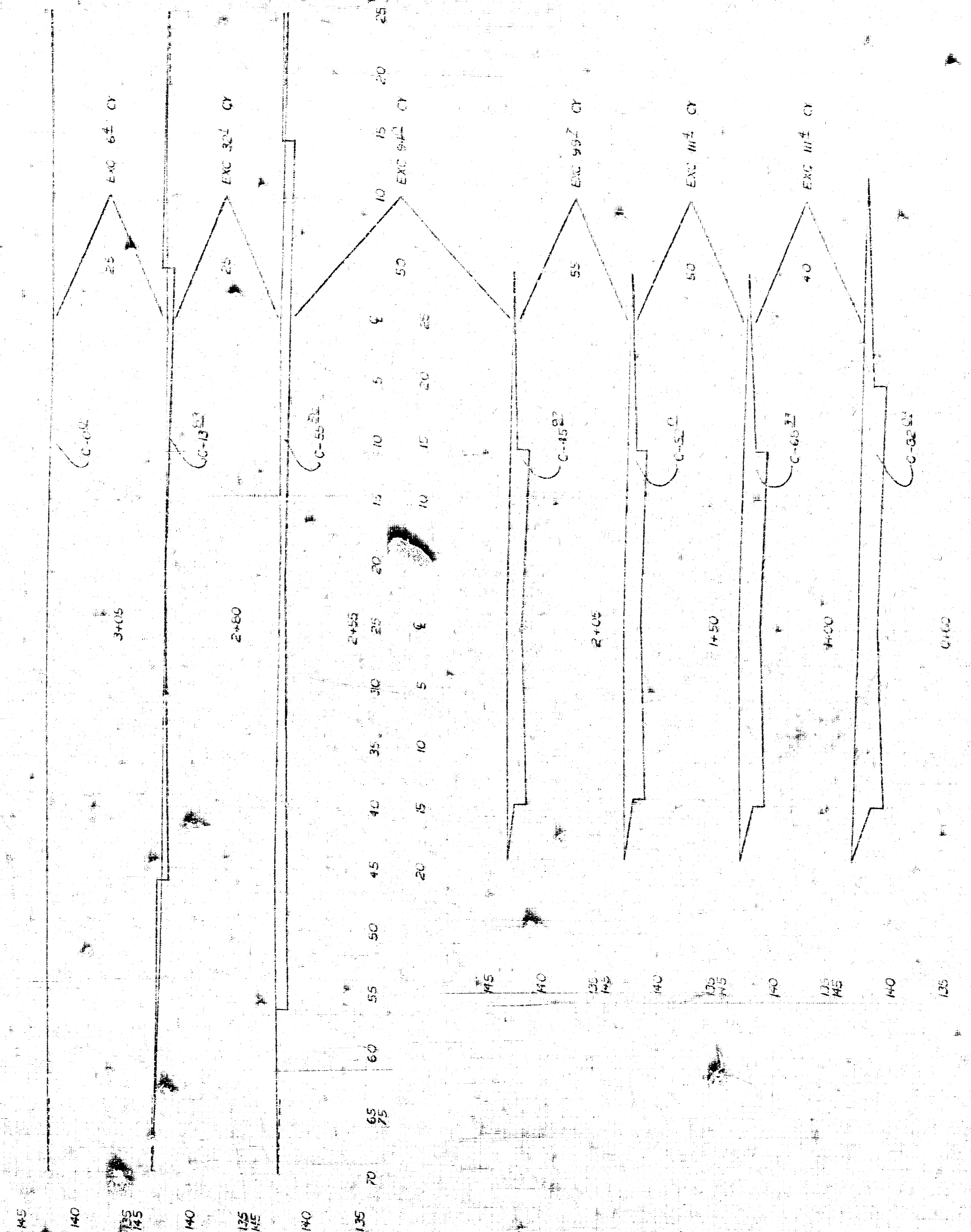
SAYLER ADDITION



SCALE: 1" = 100'
0.4" = 40' CURB WITH 1" DIA. & 1" DIA. 1.0" = 100'

EARL M. SAYLER			
STREET IMPROVEMENTS			
PLAN			
EVERGREEN COURT			
PROJ. NO. 472-81828-001			
CASTLE & ASSOCIATES ENGINEERS, WICHITA, KANSAS	DSG LJK	DWG FILE NO.	
	CH RMC	8740-D-80,079	
DATE	APRIL 1959	APP RLC	SHEET NO 3 OF 4

70 75 80 85 90 95 100 105 110 115 120 125 130 135 140 145 150 155 160 165 170 175 180 185 190 195 200 205 210 215 220 225 230 235 240 245 250 255 260 265 270 275 280 285 290 295 300 305 310 315 320 325 330 335 340 345 350 355 360 365 370 375 380 385 390 395 400 405 410 415 420 425 430 435 440 445 450 455 460 465 470 475 480 485 490 495 500 505 510 515 520 525 530 535 540 545 550 555 560 565 570 575 580 585 590 595 600 605 610 615 620 625 630 635 640 645 650 655 660 665 670 675 680 685 690 695 700 705 710 715 720 725 730 735 740 745 750 755 760 765 770 775 780 785 790 795 800 805 810 815 820 825 830 835 840 845 850 855 860 865 870 875 880 885 890 895 900 905 910 915 920 925 930 935 940 945 950 955 960 965 970 975 980 985 990 995 1000



SHEET NO. 4
 400 CY EXCAVATION
 500 CY EXCAVATION

EARL M. SAYLER STREET IMPROVEMENTS			
CROSS SECTIONS EVERGREEN COURT PROJ. NO. 472-61828-001			
CASTLE & ASSOCIATES ENGINEERS WICHITA, KANSAS	DR. LJK DR. LJK CH. RMC APP. RLC	8740-D-80,084	REV.
DATE: APRIL 1988	SHEET NO. 4		