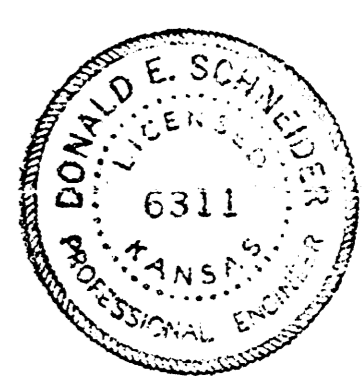
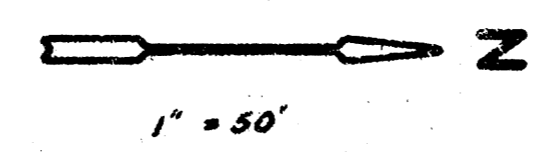
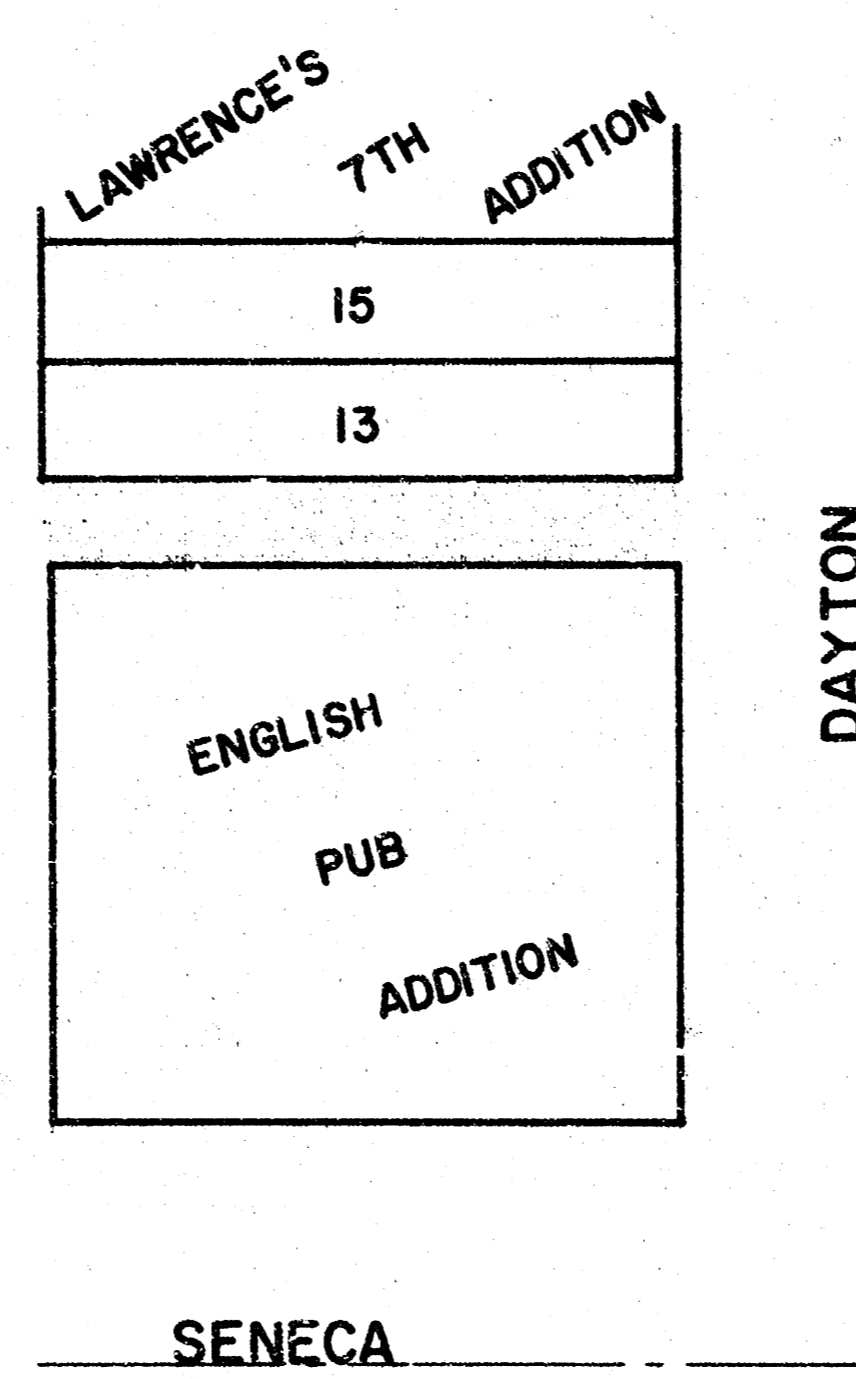
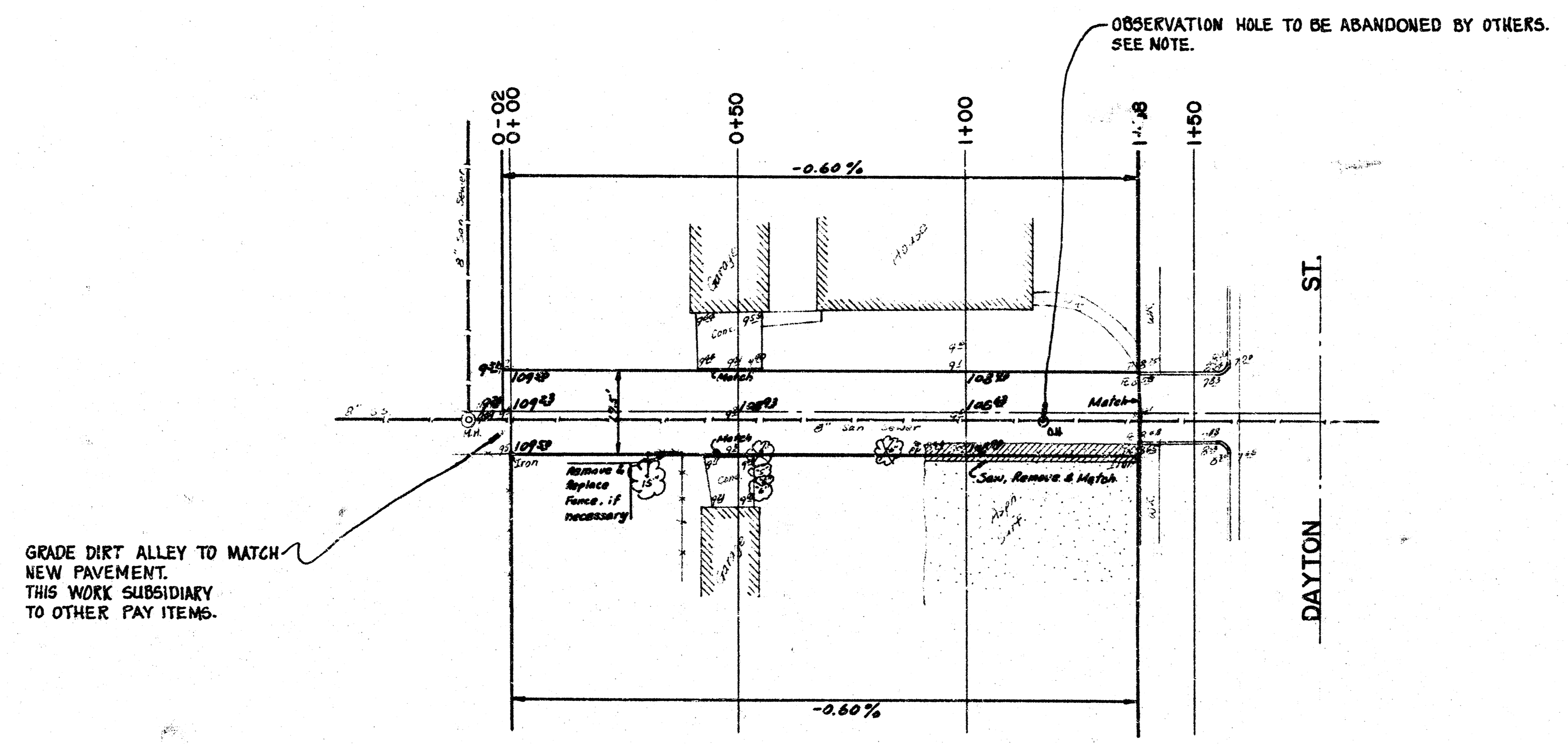
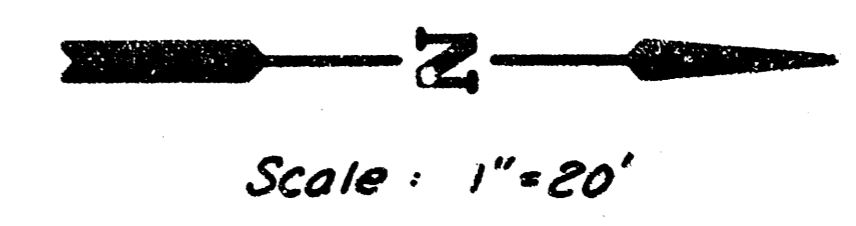


CONC. ALLEY BETWEEN DODGE & SENECA

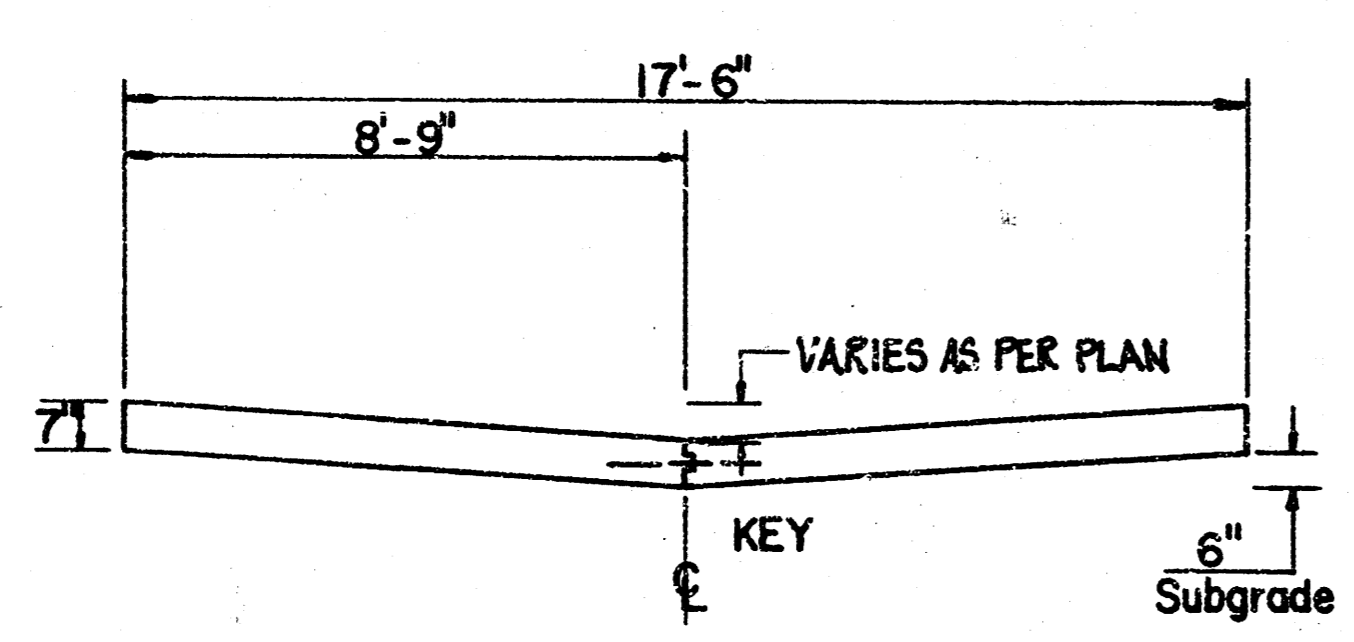
FROM 139 $\frac{1}{2}$ S. OF SL DAYTON TO SL DAYTON



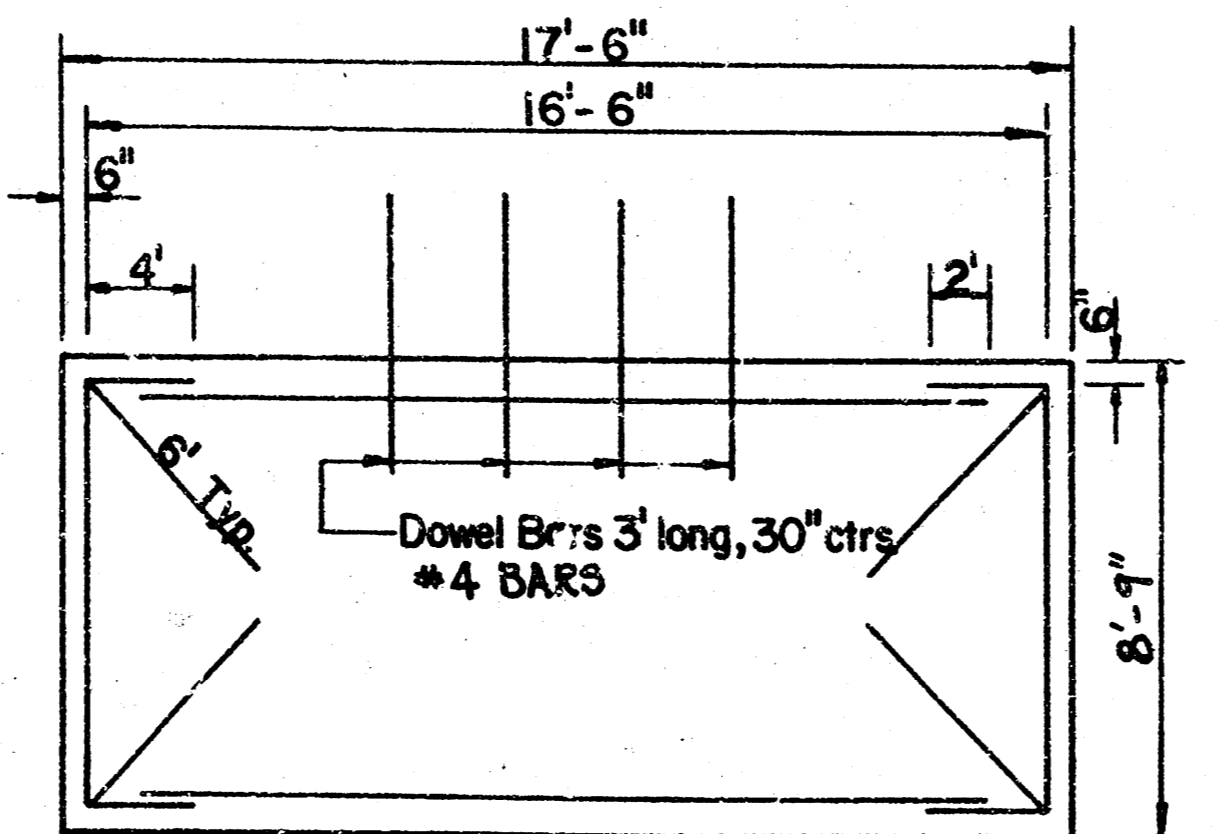
PROJECT DESCRIPTION		
ALLEY BETWEEN DODGE & SENECA SL lot 13, Dayton St in Lawrence's 7th Add'n & SL lot 1, Blk A, English Pub Add'n to S.L. Dayton		
PROJECT NUMBER		
472-76-245-81212-000-001		
BOOK NO. CG23	APPROVED BY	DATE
DRAWN BY VRH	REVISOR	REVISION
CITY OF WICHITA DEPARTMENT OF ENGINEERING DIRECTOR OF ENG./CITY ENGINEER R. W. BRUGGEMAN		SCALE 1/3



GRADE DIRT ALLEY TO MATCH NEW PAVEMENT. THIS WORK SUBSIDIARY TO OTHER PAY ITEMS.



TYPICAL SECTION



ALL BARS #4 UNLESS SHOWN OTHERWISE
TYPICAL STEEL PATTERN

NOTE: FIELD ENGINEER TO NOTIFY ROY GRIFFIN, SEWER MAINTENANCE DEPARTMENT, DURING THE EXCAVATION PROCESS SO SEWER MAINTENANCE CAN ABANDON THE OBSERVATION HOLE AT STATION 1 + 17.

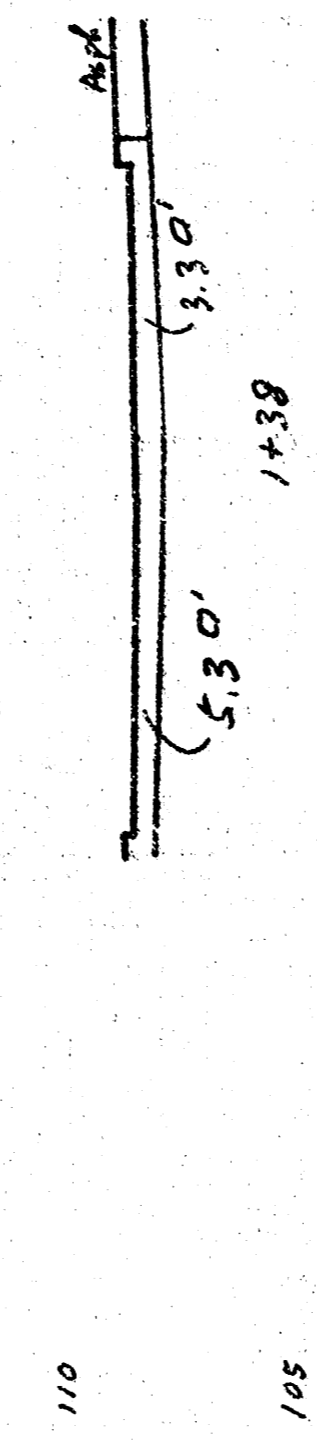
FIELD ENGINEER SHALL NOTIFY CERALD BLAINE, SEWER MAINTENANCE DEPARTMENT, AFTER ALL SUBGRADE WORK ON THIS PROJECT IS COMPLETED SO MAINTENANCE CAN REEVALUATE THE EXISTING SANITARY SEWER PRIOR TO CONSTRUCTION OF THE ALLEY PAVEMENT.

PARKING LOT SURFACE COURSE SHALL BE SC-1 MIX.
PARKING LOT BASE COURSE SHALL BE BC-1 MIX.

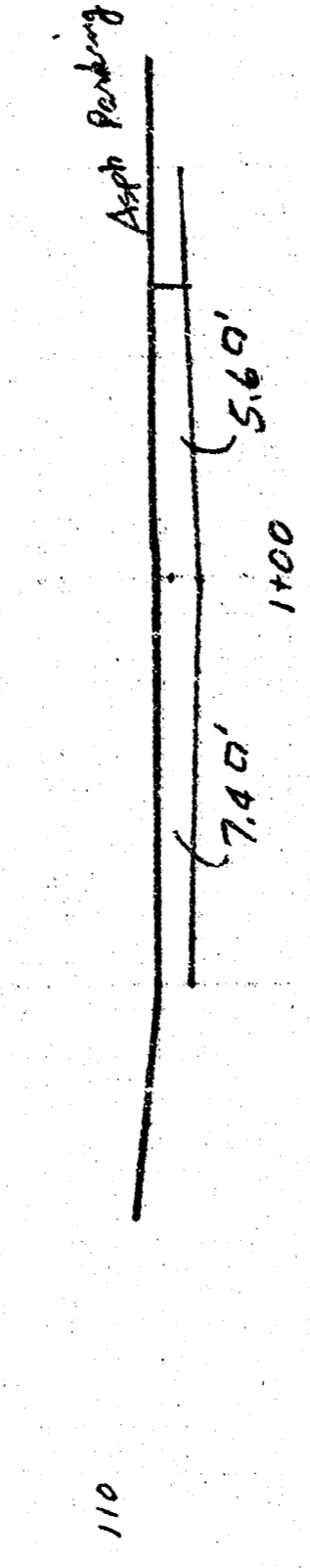
CAUTION
UNDERGROUND UTILITIES
Please check with K G & E or Southwestern Bell Telephone Co. for Location

THE CONTRACTOR SHALL BE RESPONSIBLE FOR PRESERVING PROPERTY IRONS. THE CONTRACTOR SHALL BE REQUIRED TO RE-ESTABLISH ANY PROPERTY IRONS WHICH ARE DAMAGED OR DESTROYED BY HIS CONSTRUCTION OPERATIONS. SUCH IRONS SHALL BE RE-ESTABLISHED BY A LICENSED LAND SURVEYOR OR A LICENSED PROFESSIONAL ENGINEER IN ACCORDANCE WITH STATE LAWS.

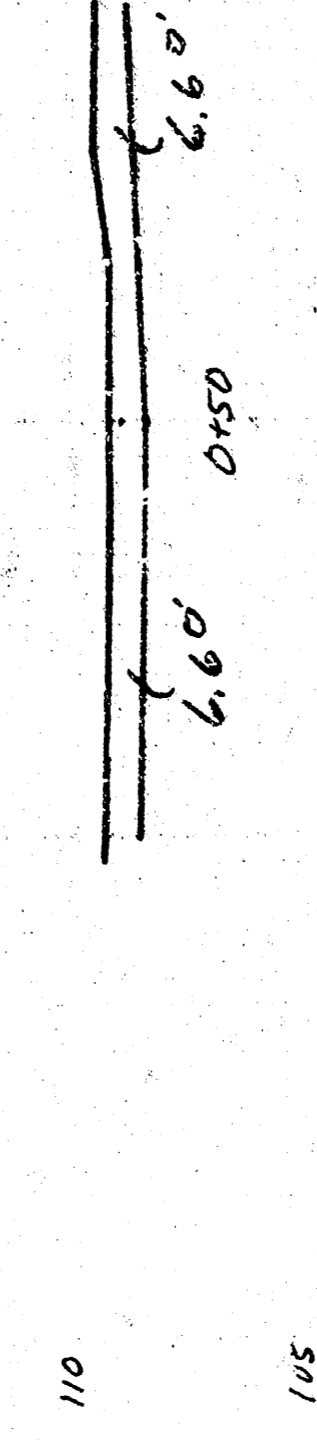
PROJECT DESCRIPTION
ALLEY BETWEEN DODGE & SENECA
SL lot 13, Dayton St in Lawrence's 7th Add'n & SL
lot 1, Blk A, English Pub Add'n to S.L. Dayton
PROJECT NUMBER
472-76-245-81212-000-000-001 2/3



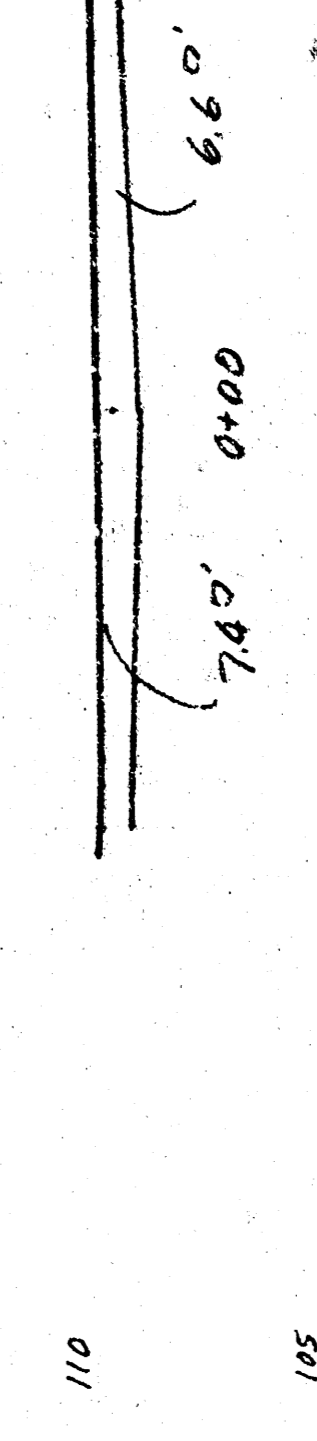
Exc. = 15.2 C.Y.



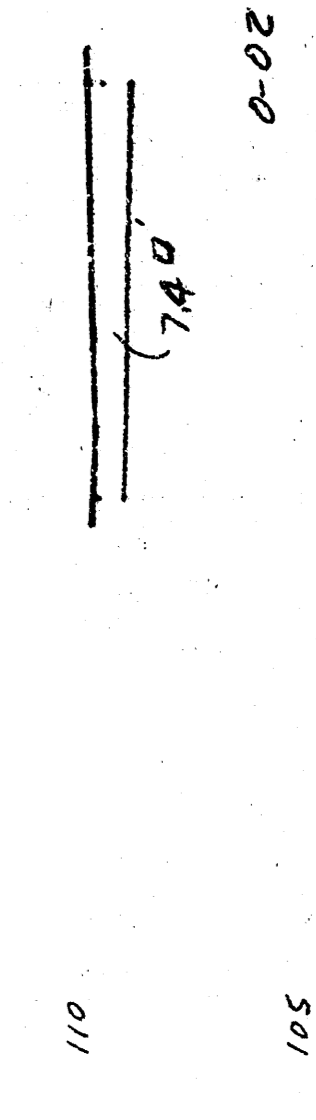
Exc. = 24.3 C.Y.



Exc. = 25.2 C.Y.



Exc. = 5 C.Y.



Σ = 65.2 C.Y.
 + 10% 6.5 C.Y.
 Total Exc. = 71.7 C.Y.