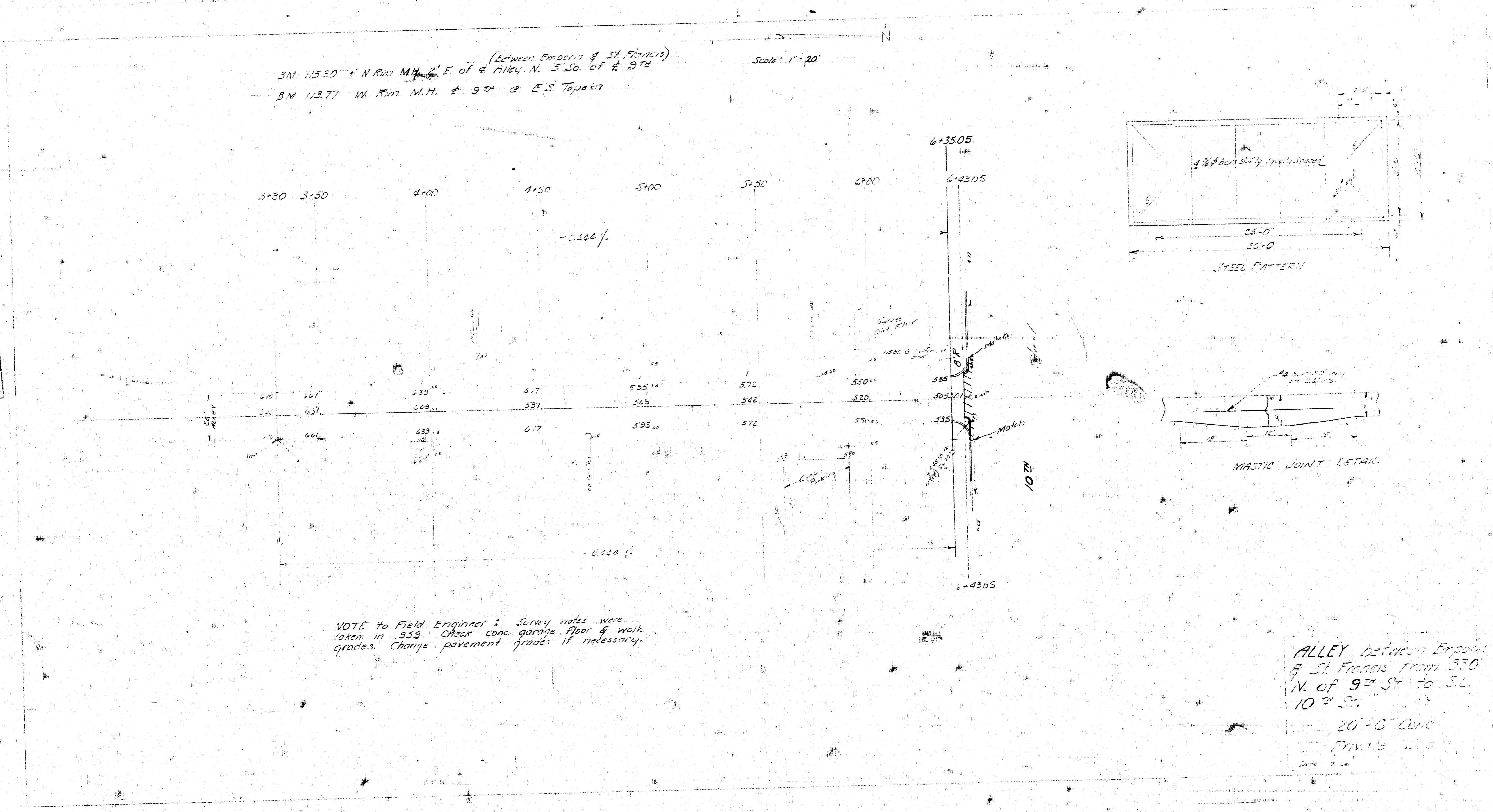


BM 11530 + N Rim M.H. 2' E. of & Alley N. 5' So. of # 974
 BM 11377 W. Rim M.H. # 974 @ E.S. Tepala

Scale: 1" = 20'

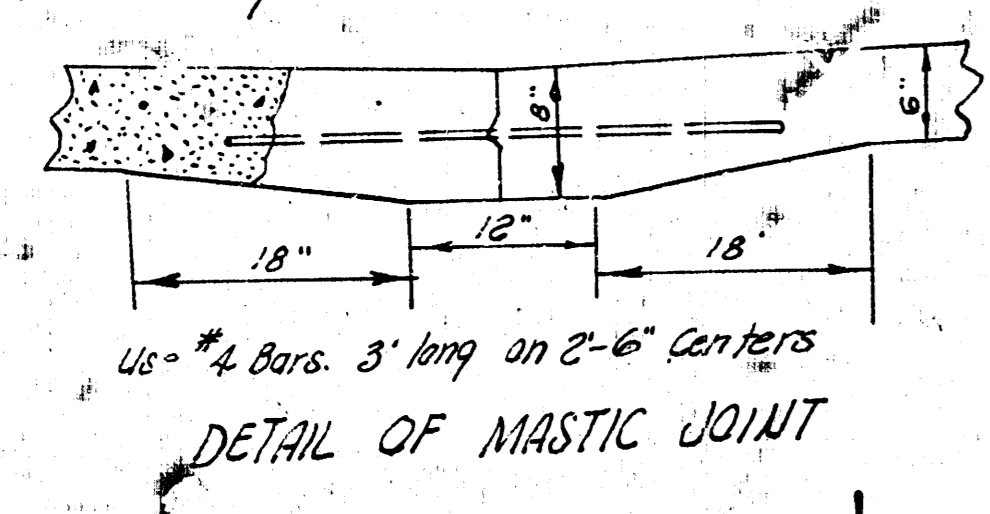
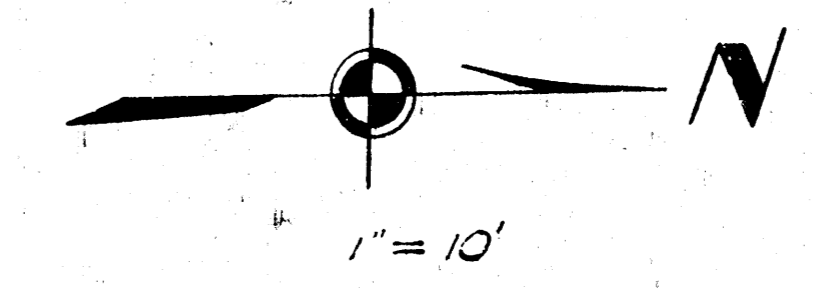
Survey
 1959
 District



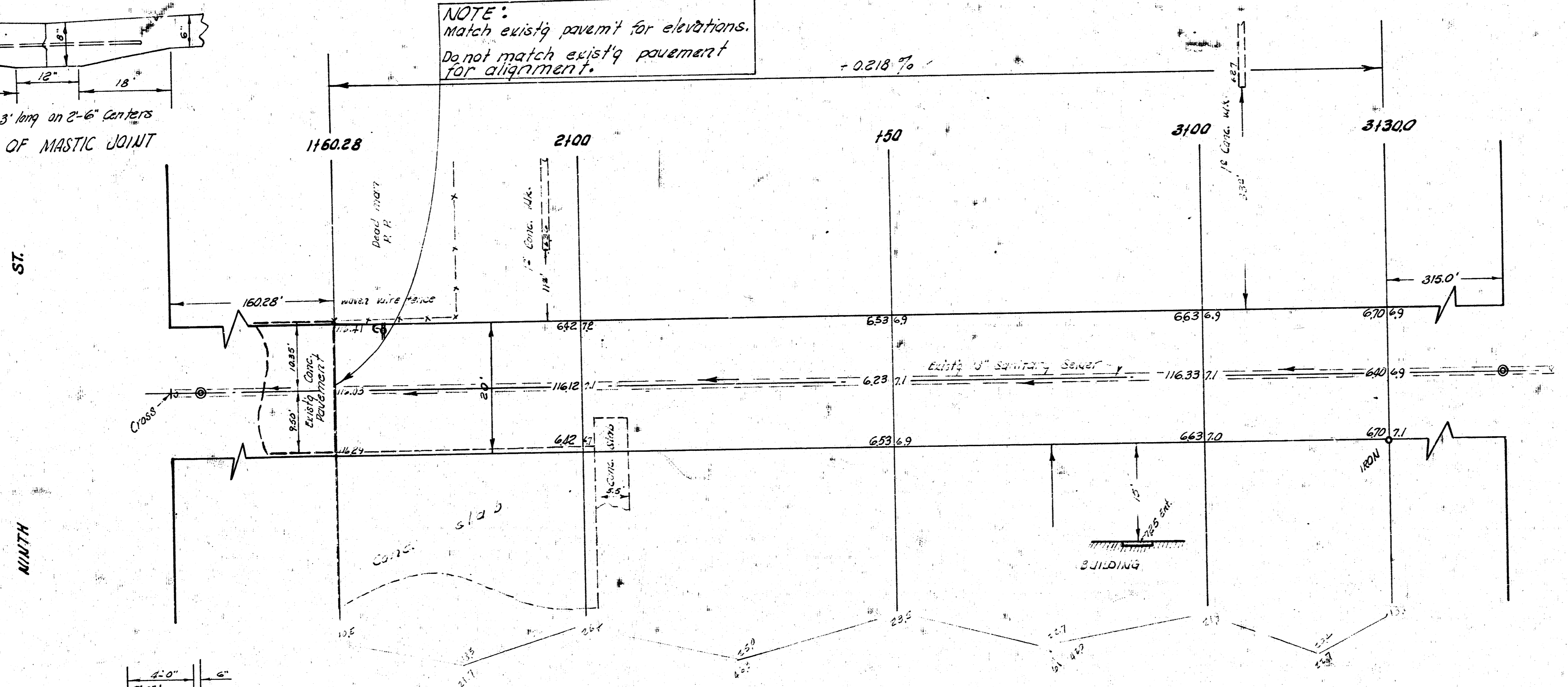
NOTE to Field Engineer: Survey notes were taken in 1959. Check conc garage floor & walk grades. Change pavement grades if necessary.

ALLEY between Empain
 & St. Francis from 350
 N. of 9th St. to S.L.
 10th St.
 20'-0" Conc
 Finish 1959
 Date 7-59

S. M. 115.80 " + N. rim M.H. 2nd E. of \pm Alley No. (Betw. Emporia & St. Francis) 5' S. of \pm 9th.
 S. M. 113.77 W. Rim M.H. \pm 9th @ E. S. Topeka.
 Sta. on \pm Alley.

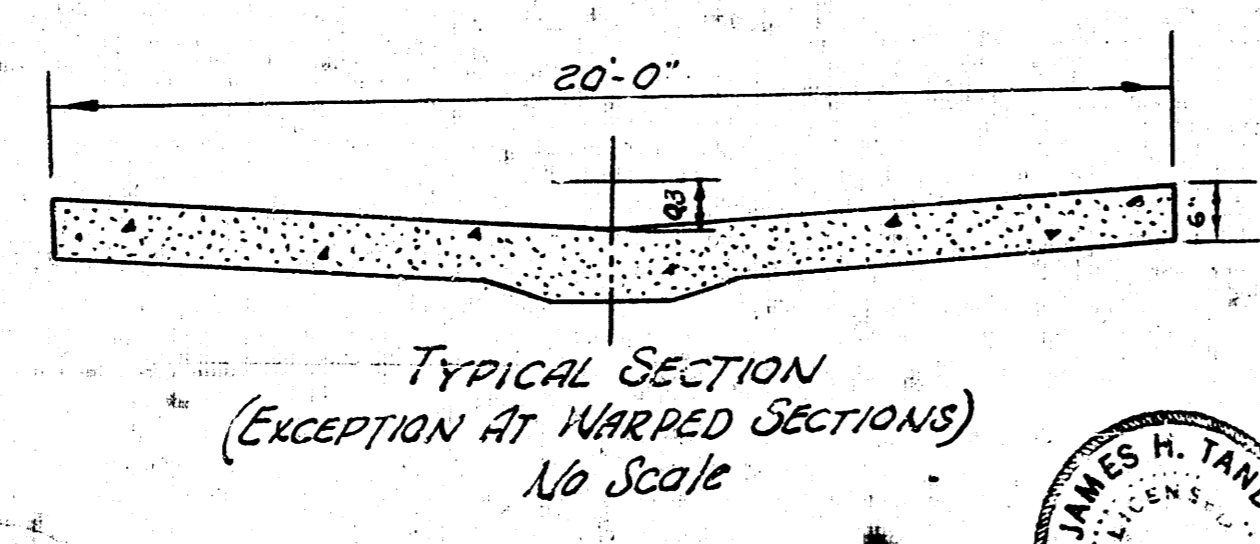
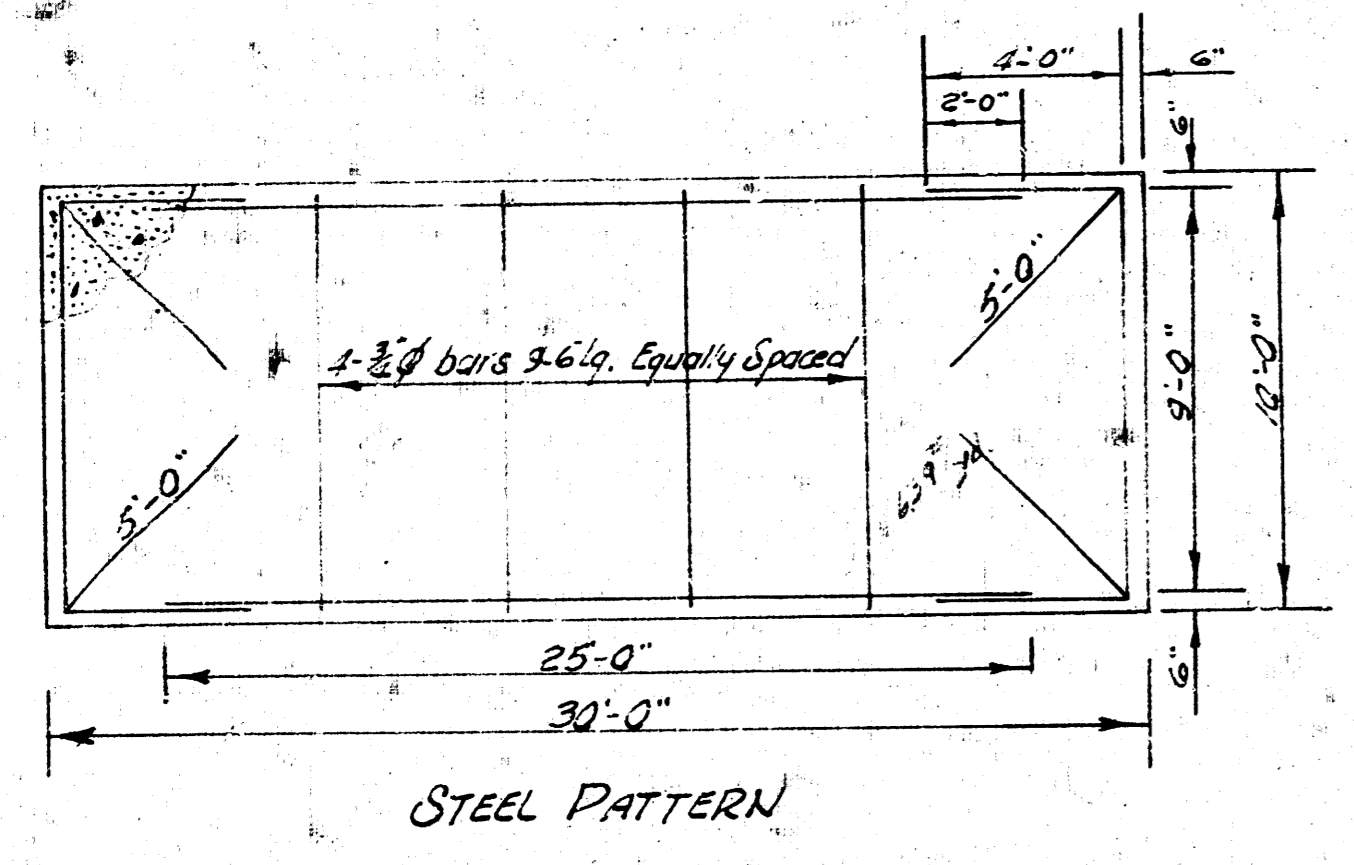


NOTE:
 Match existg pavmt for elevations.
 Do not match existg pavmt
 for alignment.

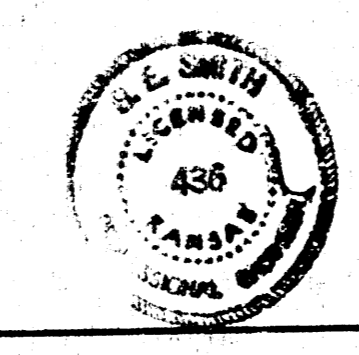
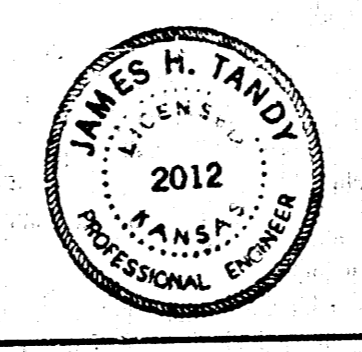


ESTIMATED QUANTITIES	
377.2	Sq. Yds. 6" Conc.
2546.0	Lbs. Reinf. Steel
133.0	Cu. Yds. Excavation
189.7	Lin. Ft. of Mastic Joint
2.6	Cu. Yds. Conc.
2.6	Cu. Yds. Special Excav.
27.5	Sq. Ft. Drive Remove

Sunny J. Young BR 88-7
 Proj. Eng.
 Exc. U.K.K.
 Checked 7/



NOTE:
 This bldg. Ent. is to be
 at above finish grade
 for parking area & bldg.



ALLEY
 Betw. Emporia & St. Francis
 16228' N. of N.L. 9th to 330' N. of N.L. 9th
20' CONC. - 6"
 CITY OF WICHITA, KANSAS
 & E. SMITH CITY ENGINEER
 AUG. 1959, PRIVATE CONTRACT

10 e 4