

ALLEY

BETWEEN EMPORIA AND ST. FRANCIS FROM THE NORTH LINE OF 10TH STREET
TO A POINT 10' NORTH OF THE SOUTH LINE OF LOT 16, BURLEIGH'S ADDITION
CITY PROJECT NO. 472-76-245-81420-000-000-001

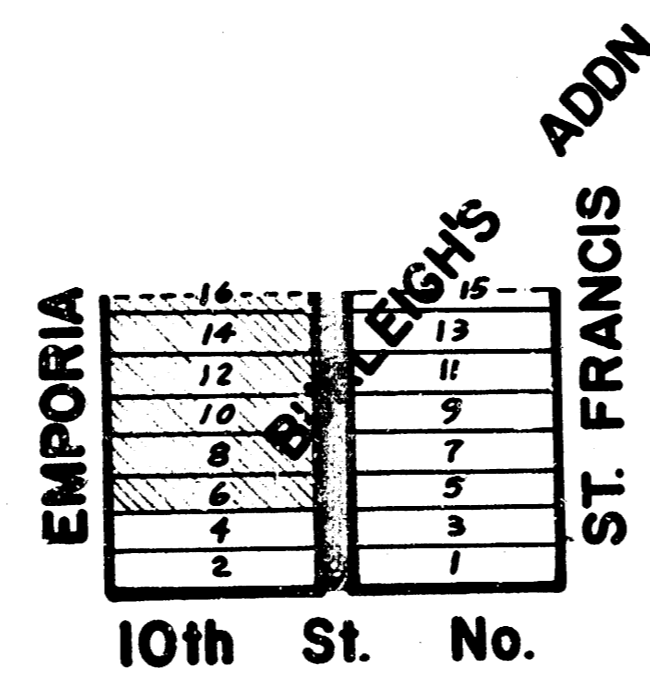


SCALE 1" = 150'

GENERAL NOTES:

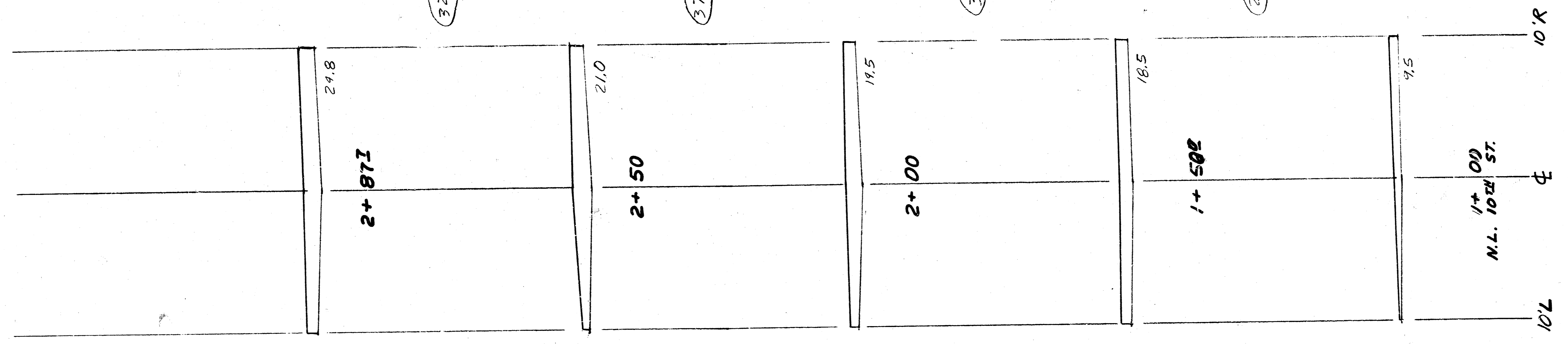
- 1) Contractor to Coordinate Construction with City of Wichita Dept. of Water Pollution Control, Sewer Maintenance Division, and Contact Jerry Blaine, 268-4419 Prior to Construction.
Sewer Maintenance personnel to seal off observation holes on sanitary sewer line prior to Alley construction.
- 2) SANITARY SEWER LINE SHALL BE RETELEVISED AFTER SUBGRADE WORK HAS BEEN COMPLETED BUT BEFORE THE PAVEMENT IS PLACED SO SEWER MAINTENANCE PERSONNEL CAN DETERMINE IF THE LINE WAS DAMAGED DURING CONSTRUCTION. ANY DAMAGE TO THE SEWER SHALL BE CORRECTED BY THE CONTRACTOR AT HIS OWN EXPENSE.

CROSSHATCH DENOTES IMPROVEMENT DISTRICT →



CITY OF WICHITA	M. E. LINDERAK	CITY ENGINEER
LANDCO ENGINEERING		CONSULTANT ENGINEER

TOTAL Exc. = 130.6 C.Y.



32.0 C.Y.

37.5 C.Y.

35.2 C.Y.

25.9 C.Y. Exc

120
115

120
115

120
115

120
115

120
115

ALLEY BETWEEN EMPORIA &
ST. FRANCIS - FROM THE N.L. OF 10TH
ST. TO A POINT 10' N. OF THE
S.L. OF LOT 16, BURLEIGH'S ADDN.
472-76-245-81420-000-000-001