

# PAVING IMPROVEMENT OF ALLEY

FROM

ENGLISH TO WILLIAM BETWEEN EMPORIA AND ST. FRANCIS

IN

## THE CITY OF WICHITA

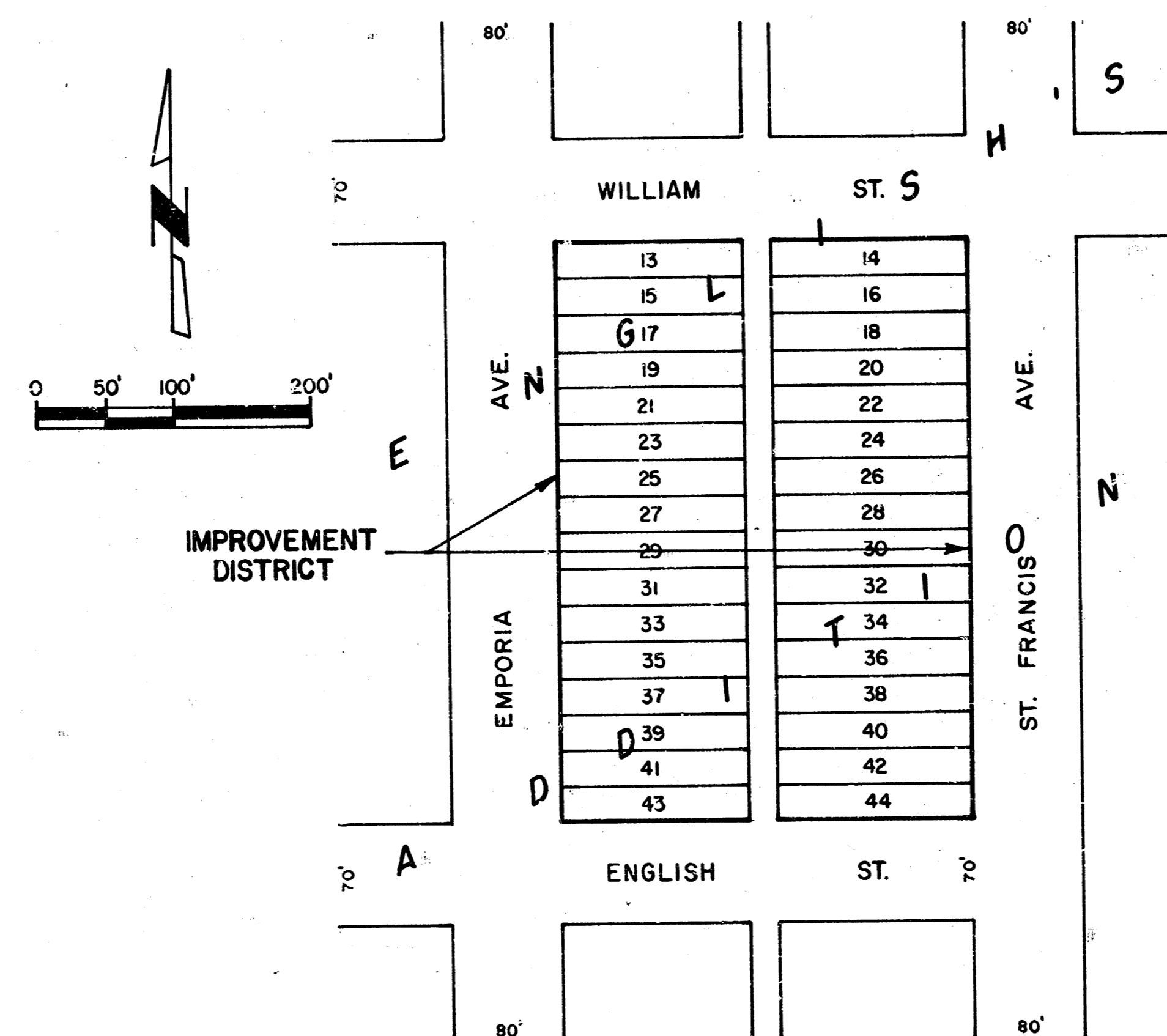
SEDGWICK COUNTY, KANSAS

MICHAEL E. LINDEBAK, P.E., CITY ENGINEER

CITY PROJECT NO. 472-76-245-81730-000-000-001 INDEX # 606103

### INDEX OF SHEETS

1. Title Sheet
2. Typical Section
3. Plan Sheet
4. Joint Layout & Details
5. Cross-Sections

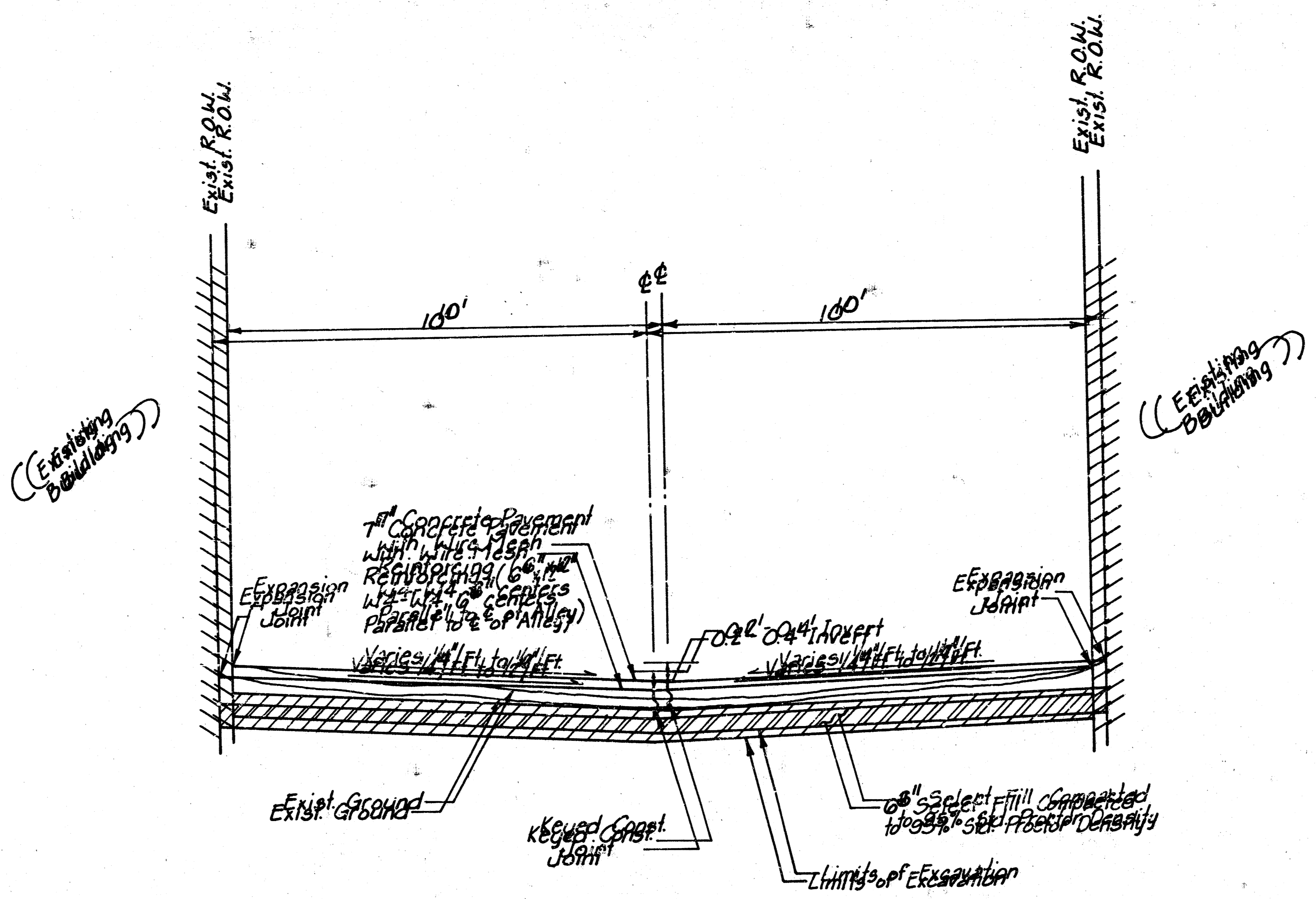


APP.  
C.D.  
TR.  
DE.  
PUB.  
PLOT.  
SUNY.

SEPTEMBER, 1988

**Booker/Freund**  
Engineers Architects Planners





NOTE: Contractor will be responsible for excavation of the subgrade for the existing pavement to a depth of 12 inches below the proposed pavement. All existing subgrade material shall be removed and replaced with compacted 3/4\"/>

TYPICAL PAVING SECTION

CITY OF WICHITA, KANSAS MICHAEL E. LINDBERGH, P.E., CITY ENGINEER		
PAVING IMPROVEMENT OF ALLERY FROM ENGLISH TO WILLIAM BETWEEN ST. FRANCIS & EDWARDS		
CITY PROJECT # 004 RZ 278 42 2516 030 0000000001		
Engineer	Assistant	Planner
11'-22'	SHEET, 1998	22 of 25

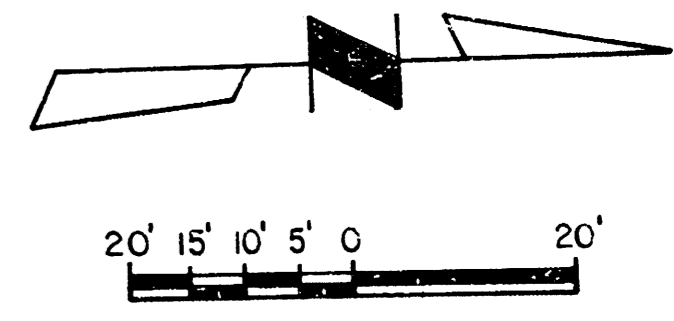
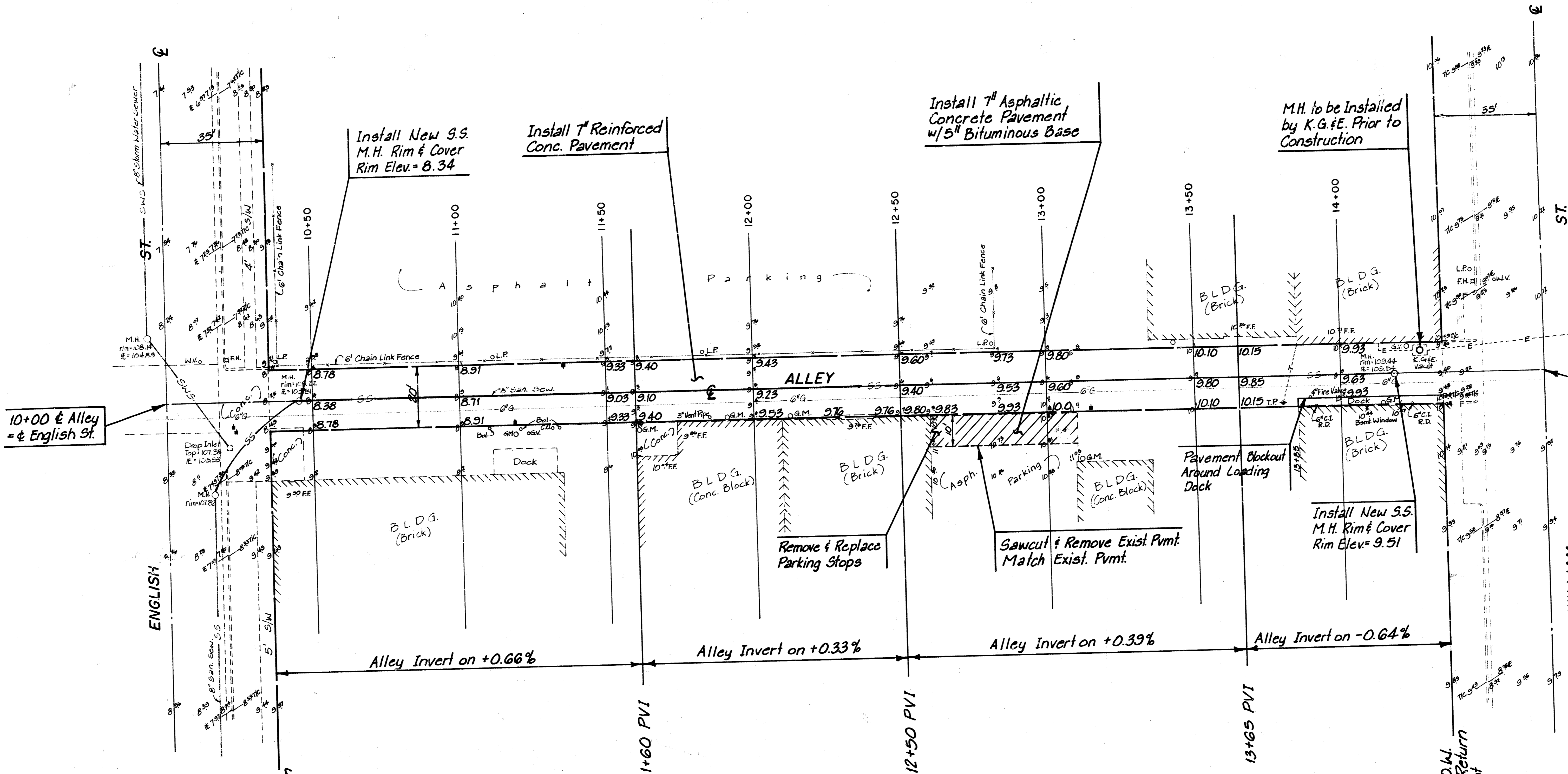
CUSTOM BLUEPRINT

SURV. J.G.    PLOT. K.M.    DES. K.M.    DR. R.C.    TR. R.C.    C.D. S.K.B.    APP.

B.M.#1 - Chiseled "a" on step  
Sta. 9+50, 2' Rt. El. = 109.71'

Broadway & Central Ave.  
Brass Rod in Concrete, 46' south of center line  
Central Ave. and 33' east of center line  
Broadway      Elev. 112.48

b.M.#2 - Chiseled "a" Top of Sidewalk  
Sta. 15+05, 10' Rt. El. 110.12



14+63.78 & Alley = & William St.

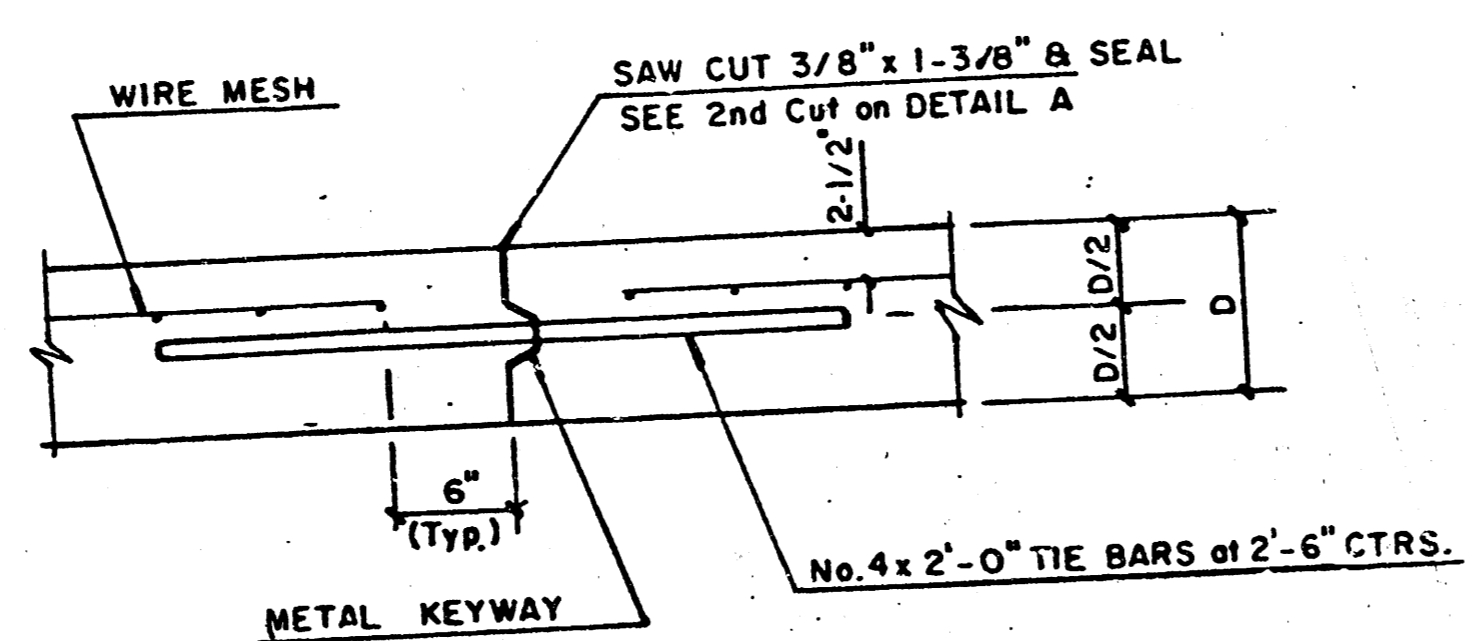
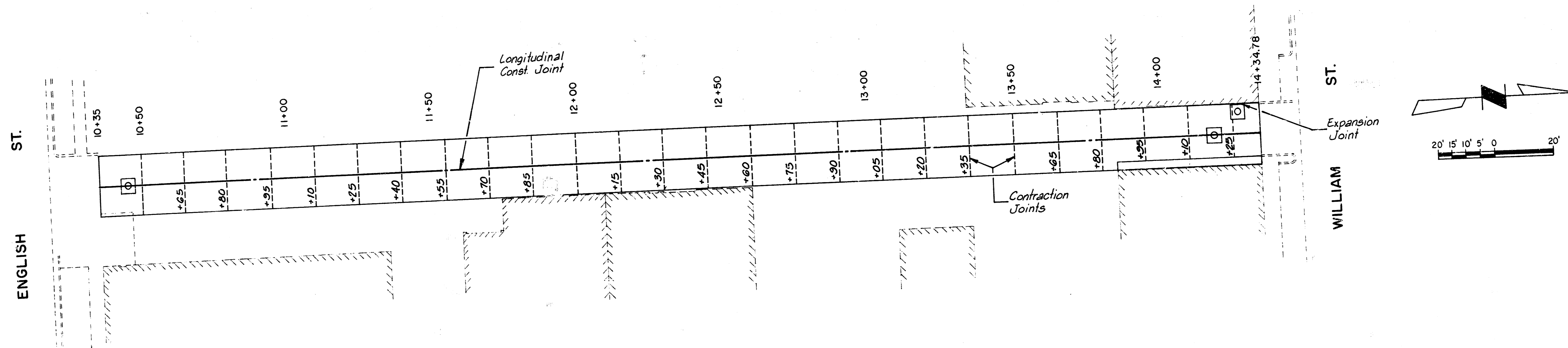
NOTE: Fill and Grade area under Loading Dock as required to drain.

NOTE: Considerable Amount of Broken Pavement & Rubble Exists in Alley.

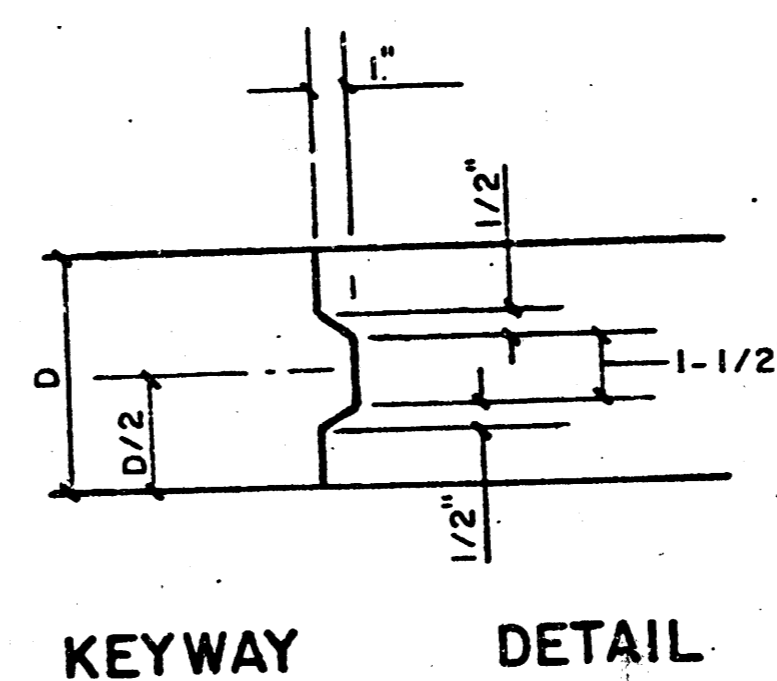
**NOTES**

- Utility service lines, poles, valve boxes, meters, etc., are to be adjusted as necessary by others prior to construction unless the plans specifically call for their adjustment by the contractor or unless the plans specifically identify a utility to be adjusted by its owner during construction. Existing utilities and their location, as shown on the plans represent the best information obtainable for design. The contractor will be required to work around existing utilities within the right-of-way which do not conflict with proposed construction.
- A saw cut at least one-half the depth of existing surface courses or one-fourth the depth of the existing total pavement thickness shall be provided at locations where proposed construction abuts an existing surface course or pavement for which partial removal of that surface or pavement is required, except when such saw cut are within three (3) feet of an existing joint the limits of removal shall be extended to the existing joint. Such saw cuts will not be paid for directly and this cost shall be considered as subsidiary to the removal of the surface or pavement.
- Rubble from the removal of miscellaneous structures and excess excavation which is to be wasted shall be disposed of on sites to be provided by the Contractor. These sites shall be approved by the Engineer as to suitability, appearance and site location. Locations that, in the opinion of the Engineer, will have an unsightly appearance will not be approved.
- The City of Wichita's Sewer Maintenance Division of the Department of Water and Water Pollution Control has televised sewers within the limits of the project and have found no defects requiring repair. The Division shall be notified and afforded the opportunity to re-televise sewer lines after subsurface work has been completed and prior to pavement construction to determine if such sewer lines have been damaged by the Contractor's operations. Damaged sewer lines will be repaired by the Contractor, as directed by the Engineer, at the Contractor's expense. Television logs are available for inspection by the Contractor during normal office hours at the Sewer Maintenance Division's office at City Hall.
- Contractor shall give property owners abutting this project, whose yards will be lower than the new finished grade elevation at the right-of-way line, an opportunity to utilize excess excavated material from the project to regrade their yards to drain to the new pavement. Contractor will be required to dump and spread the excess material as required by the specifications when requested by the property owner. The Contractor shall ascertain that a dirt order form has been properly executed by the property owner before any such excess material is delivered to such properties.
- The Contractor shall be responsible for preserving property irons. The Contractor will be required to re-establish any property irons which are damaged or destroyed by his construction operations. Such irons shall be re-established by a licensed land surveyor or a licensed professional engineer in accordance with state laws.
- The Contractor shall give all property owners and/or tenants of developed property abutting the project limits a minimum of ten (10) days advance notice prior to start of construction.

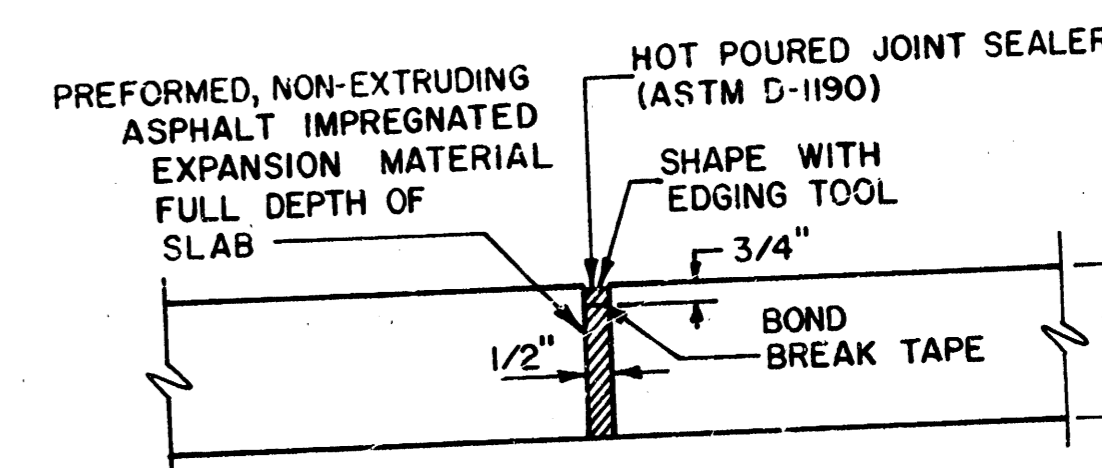
CITY OF WICHITA, KANSAS MICHAEL E. LINDEBAK, P.E., CITY ENGINEER	
PAVING IMPROVEMENT OF ALLEY FROM ENGLISH TO WILLIAM BETWEEN ST. FRANCIS & EMPORIA	
CITY PROJECT NO. 472-76-245-81730-000-000-001	
<b>Booker/Freund</b> Engineers Architects Planners	3/5
SCALE 1" = 20'	DATE SEPT, 1988
DRAWING NO. 3 of 5	



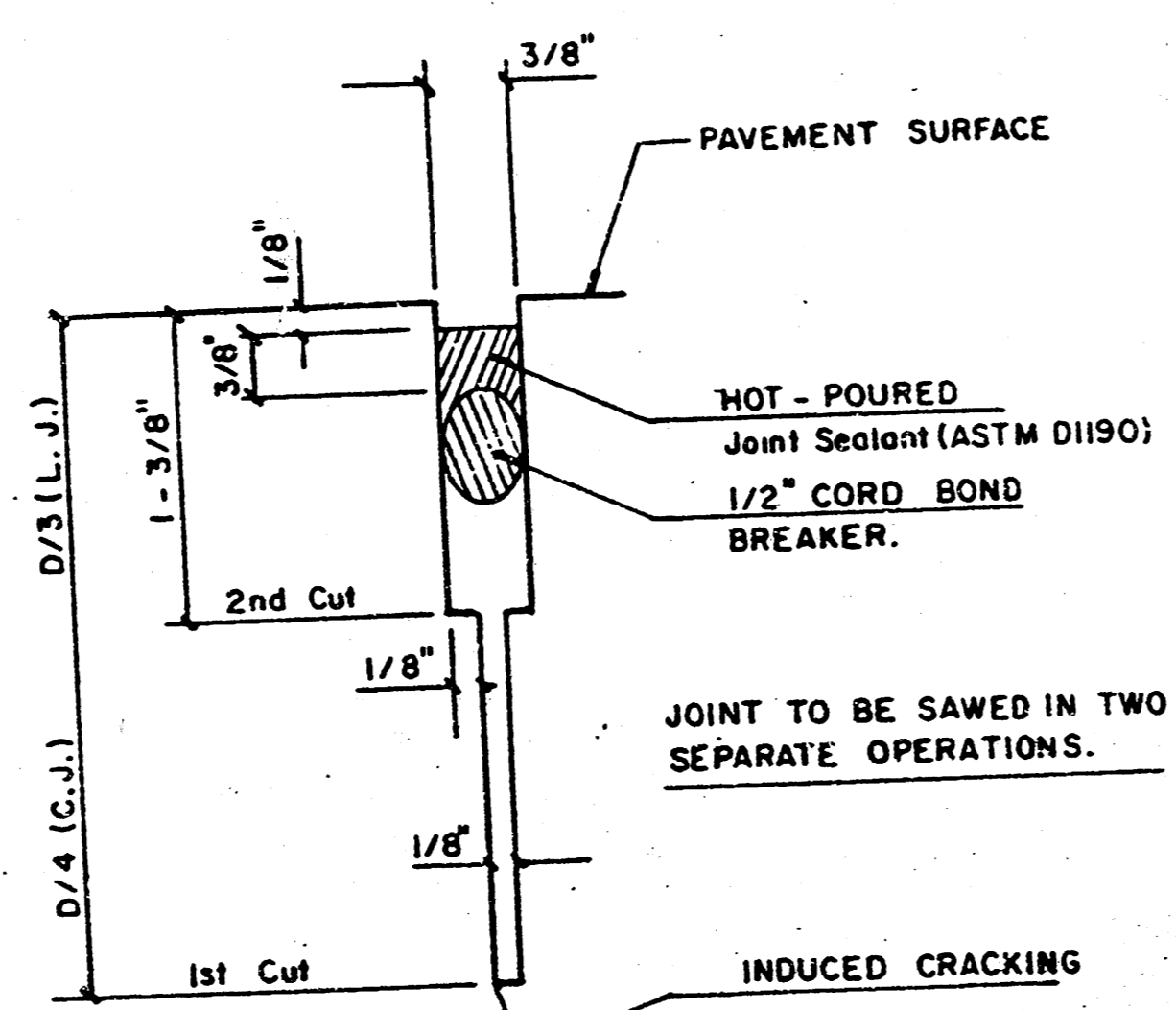
LONGITUDINAL CONSTRUCTION JOINT (L.J.)



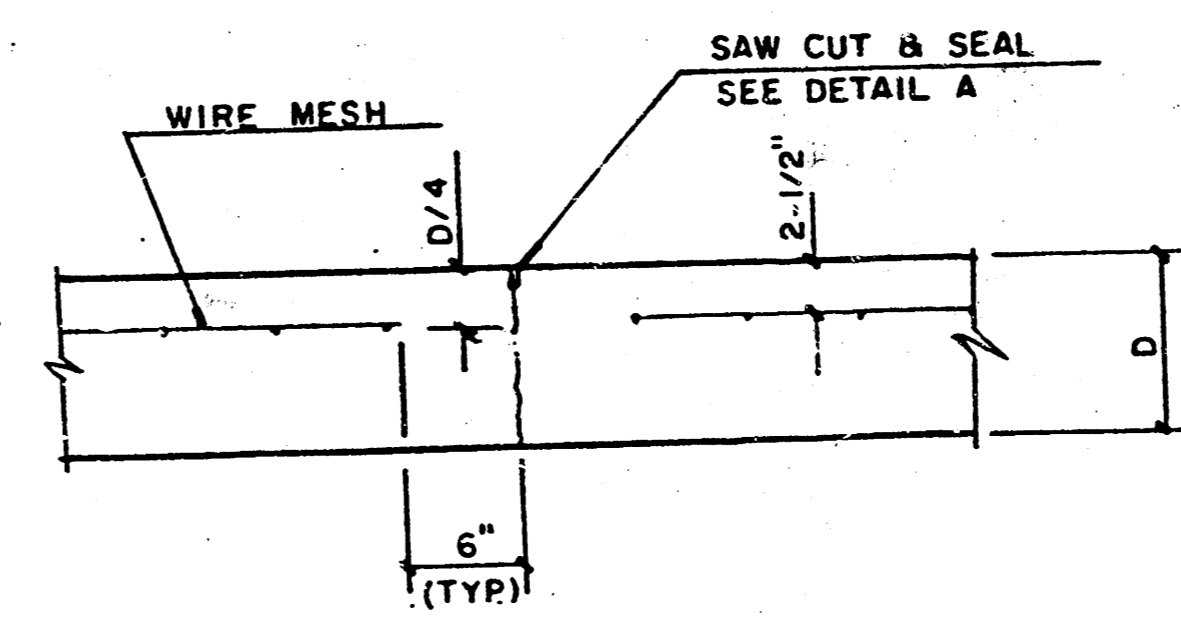
KEYWAY DETAIL



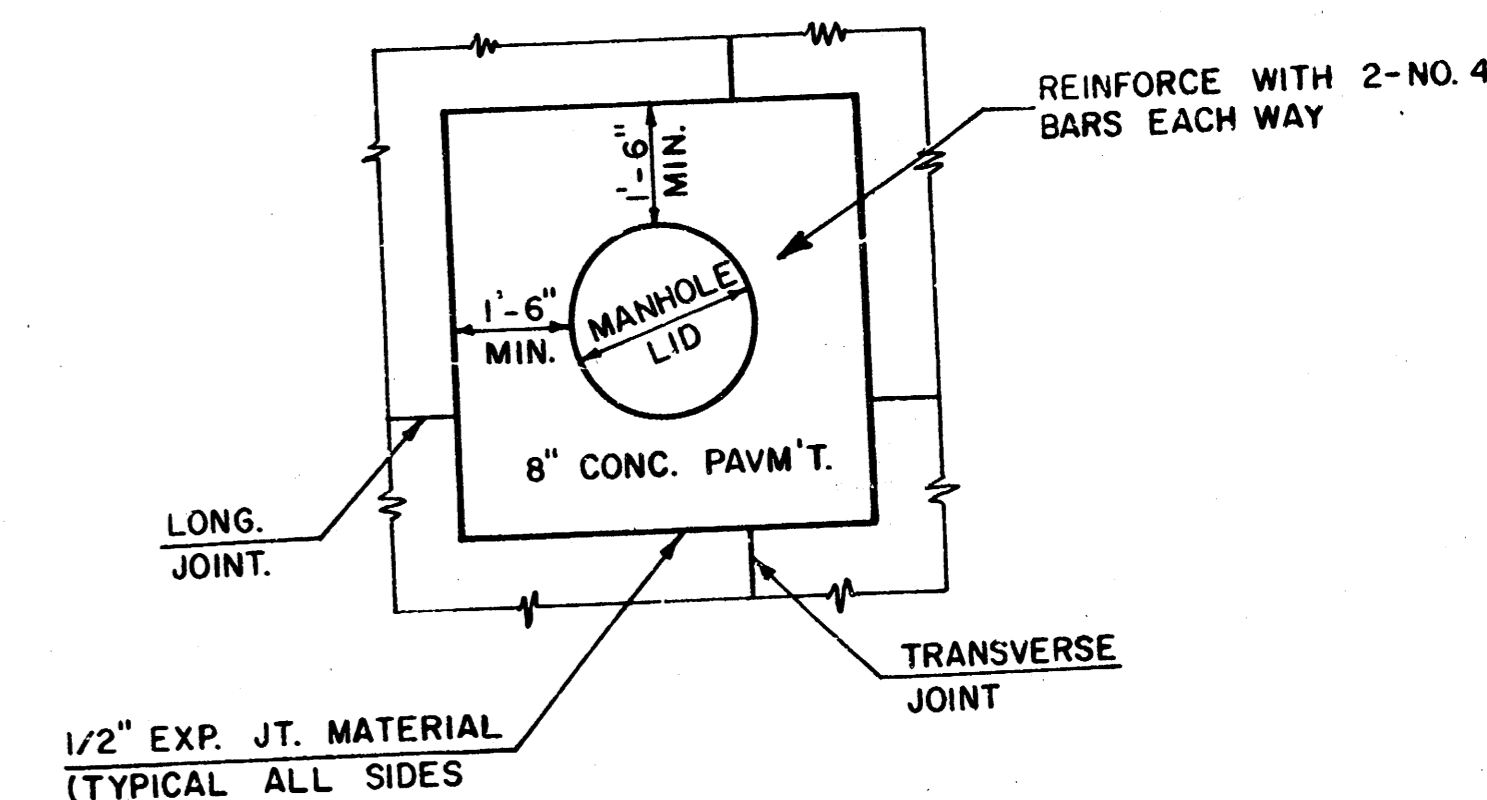
EXPANSION JOINT (E.J.)



DETAIL A



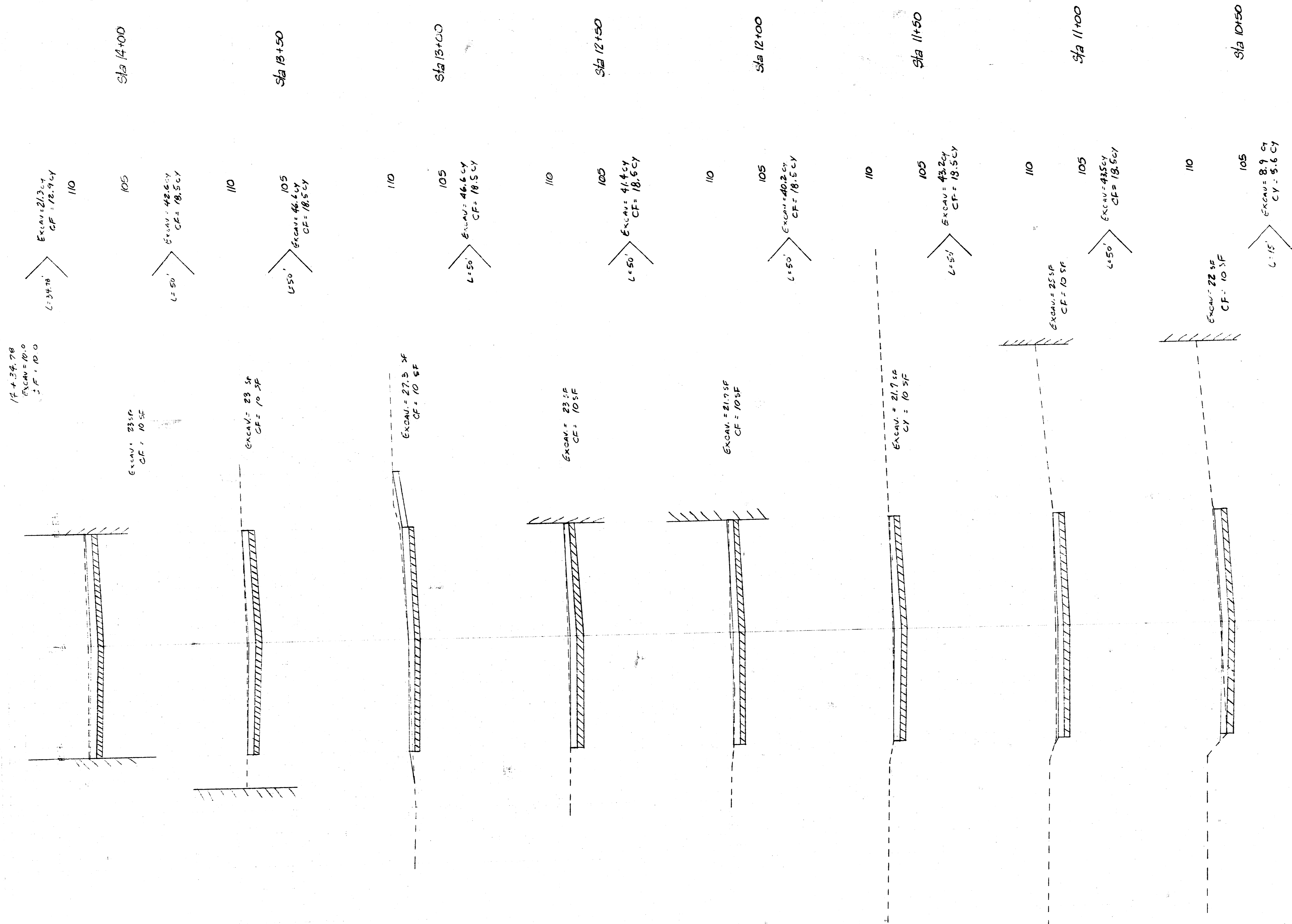
CONTRACTION JOINT DETAIL (C.J.)



TYPICAL MANHOLE BLOCKOUT (CONC. PAVM'T.)

SURV. PLOT. DES. DR. TR. CND. APP.

CITY OF WICHITA, KANSAS  
 MICHAEL E. LINDEBAK, P.E., CITY ENGINEER  
 PAVING IMPROVEMENT OF ALLEY  
 FROM ENGLISH TO WILLIAM  
 BETWEEN ST. FRANCIS & EMPORIA  
 CITY PROJECT NO. 472-76-245-81730-000-000-001  
**Booker/Freund** 4/5  
 Engineers Architects Planners  
 SCALE 1" = 20' DATE SEPT, 1988 DWG. NO. 4 of 5



EXCAV. = 21.3 SF  
CF = 10 SF

EXCAV. = 42.6 SF  
CF = 18.5 SF

EXCAV. = 46.4 SF  
CF = 18.5 SF

EXCAV. = 46.4 SF  
CF = 18.5 SF

EXCAV. = 46.4 SF  
CF = 18.5 SF

EXCAV. = 41.4 SF  
CF = 18.5 SF

EXCAV. = 40.2 SF  
CF = 18.5 SF

EXCAV. = 43.2 SF  
CF = 18.5 SF

EXCAV. = 43.2 SF  
CF = 18.5 SF

EXCAV. = 22 SF  
CF = 10 SF

EXCAV. = 8.9 SF  
CF = 3.8 SF

Sta 14+00

Sta 15+50

Sta 17+00

Sta 18+50

Sta 20+00

Sta 21+50

Sta 23+00

Sta 24+50

10+35 EXCAV. = 10 SF  
 CF = 10 SF

TOTAL  
 EXCAV. = 334.3 SF  
 CF = 148 SF

NO EXCAV. TO BE USED AS FILL  
 BORROW EXCAV. (COUNT-FURNISH) = 13.1 X CF = 175 SF