

B.M. 211.75 NE Cor. Conc. Parlo Back Frame to Sta 0+00 No Fence on Firmstead  
 B.M. 188.53 W. Cor. Top N. Ch. Woodlawn @ N End Alley Return

NOTE TO FIELD ENGR. & CONTRACTOR

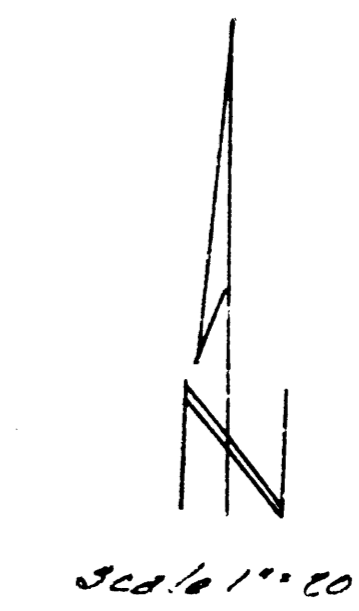
No Fence will be removed along S Prop. Line.  
 Extreme caution shall be used during  
 excavation & construction adjacent to fences.

NOTE TO CONTRACTOR

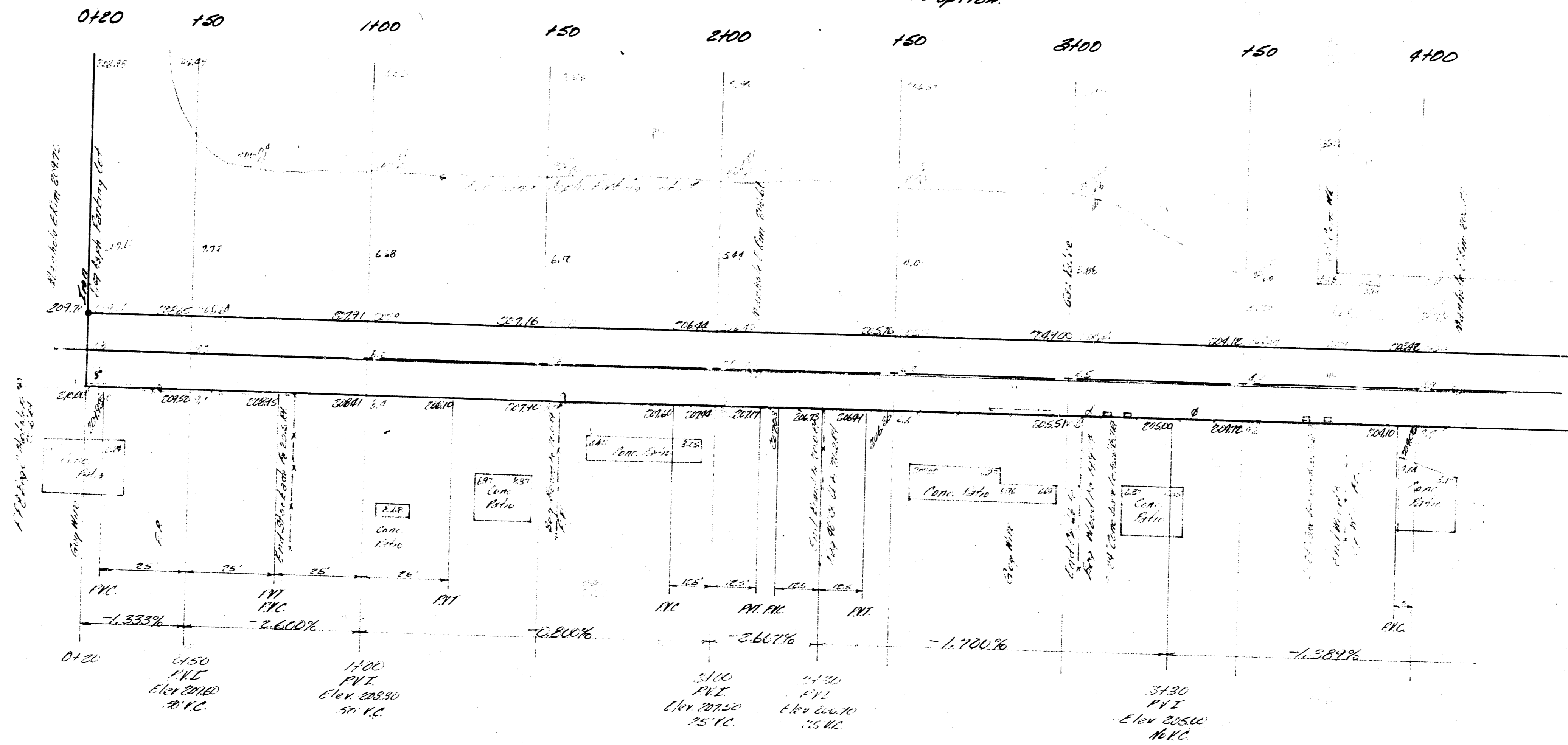
No Metal Form to be used along  
 S Prop. Line of Alley. Excavation shall be vertical  
 at S Prop. Line. Strips of screed may be set 10" N  
 of S Prop. Line for part. const.  
 From Sta 0+75 to Exist. Conc. Return may be placed  
 in 1 unit or 3 units. This will be the Contractors option.

NOTE TO CONTRACTOR

Contractor will repair Exist. Asphalt  
 Parking Lot along N Prop. Line of Alley to  
 base to new Elev. Payment will be as per Asphalt.



Base Line = N. Alley



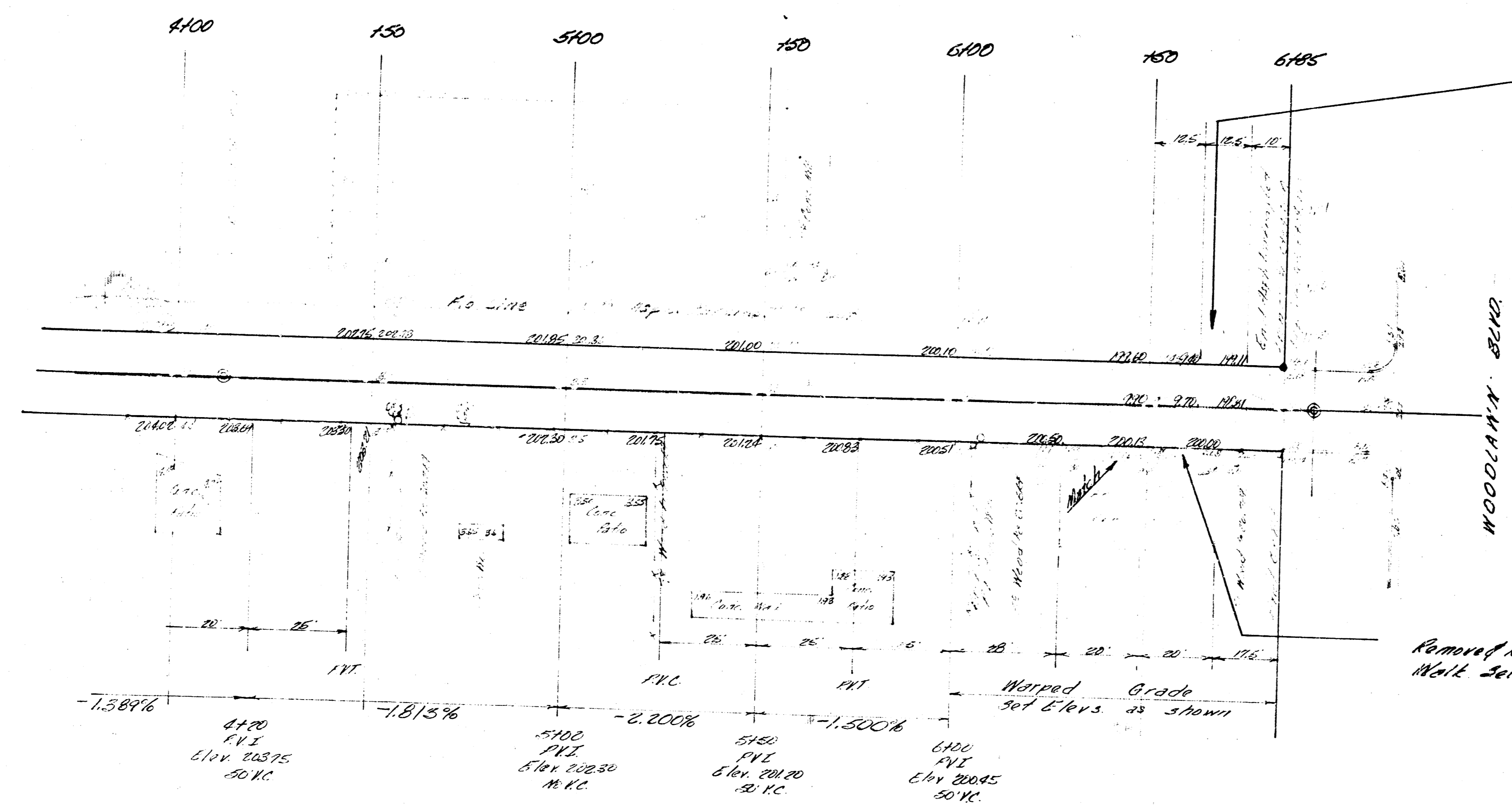
Sta 0+00 to 0+165  
 TYPICAL SECTION  
 No Scale

Use Sta 0+175 to Exist. Ret  
 TYPICAL SECTION  
 No Scale

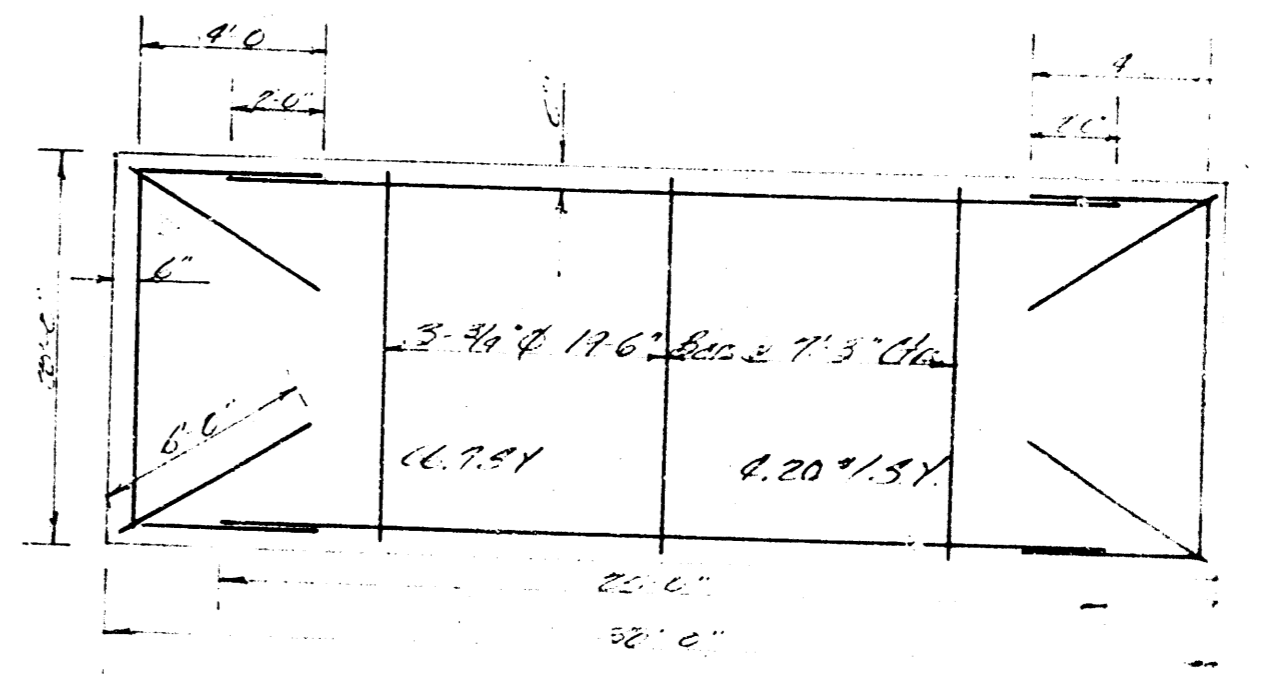
Excavation  
 Prop.  
 391.8 CY  
 321.1 @ 2%  
 430.9 Total CY

(1/3)

ALLEY S. OF 13<sup>TH</sup> ST.  
 W. LOT 18, BUR. A. M. E. MEN. ST. ALLEN.  
 TO W. WOODLAWN BLVD.  
 20' - 7" CONC.  
 CITY OF WICHITA, KANSAS.  
 B. E. SMITH CITY ENGINEER  
 DATE JUNE 1915 PROJ. NO. C 15-23



**FIELD ENGR & CONTRACTOR**  
 Field Engr. will determine Elev. of  
 existing lot and define area to be overlaid  
 with asphalt to provide drainage. 6125 to 685



**TYPICAL STEEL PATTERN**  
 No Scale