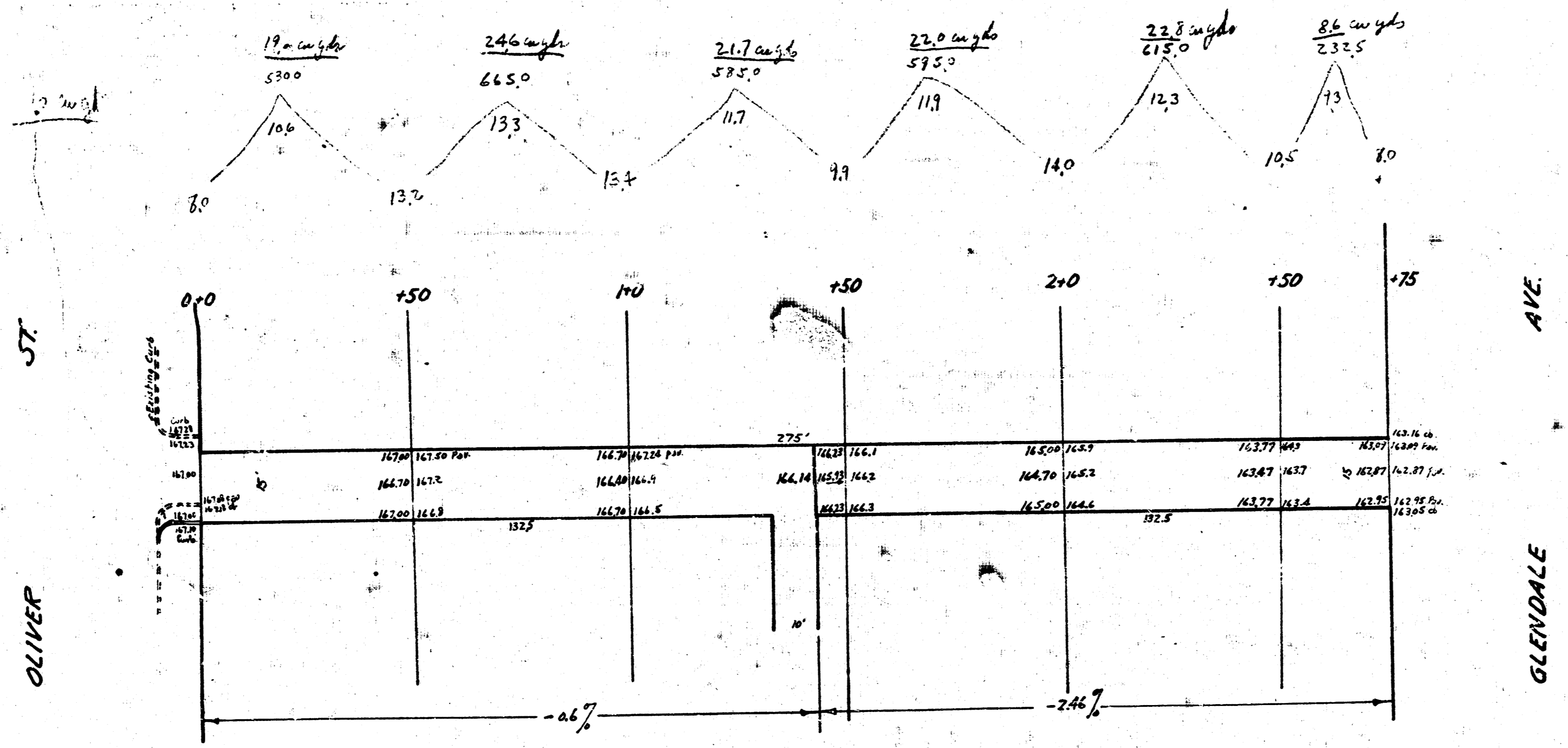


PAVING PLAN
 ALLEY SOUTH OF DOUGLAS AVE.
 EL. OLIVER ST. TO WL. GLENDALE AVE.
 15' CONCRETE - 6" THICK
 3/4" Reio. Steel

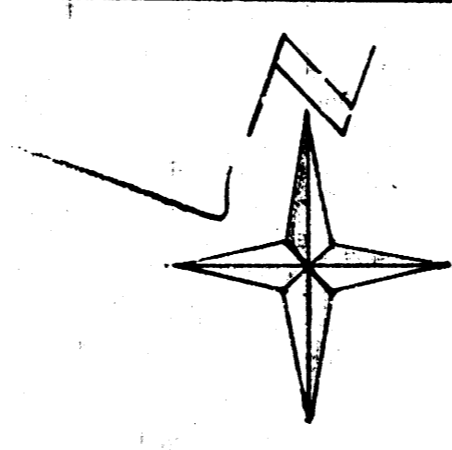
NOTE: Figures on right side of station line are ground elevations, those on left are elevations of finished paving.



B.M. Elev. 162.14 Iron in thim. S.W. cor. Oliver & Douglas

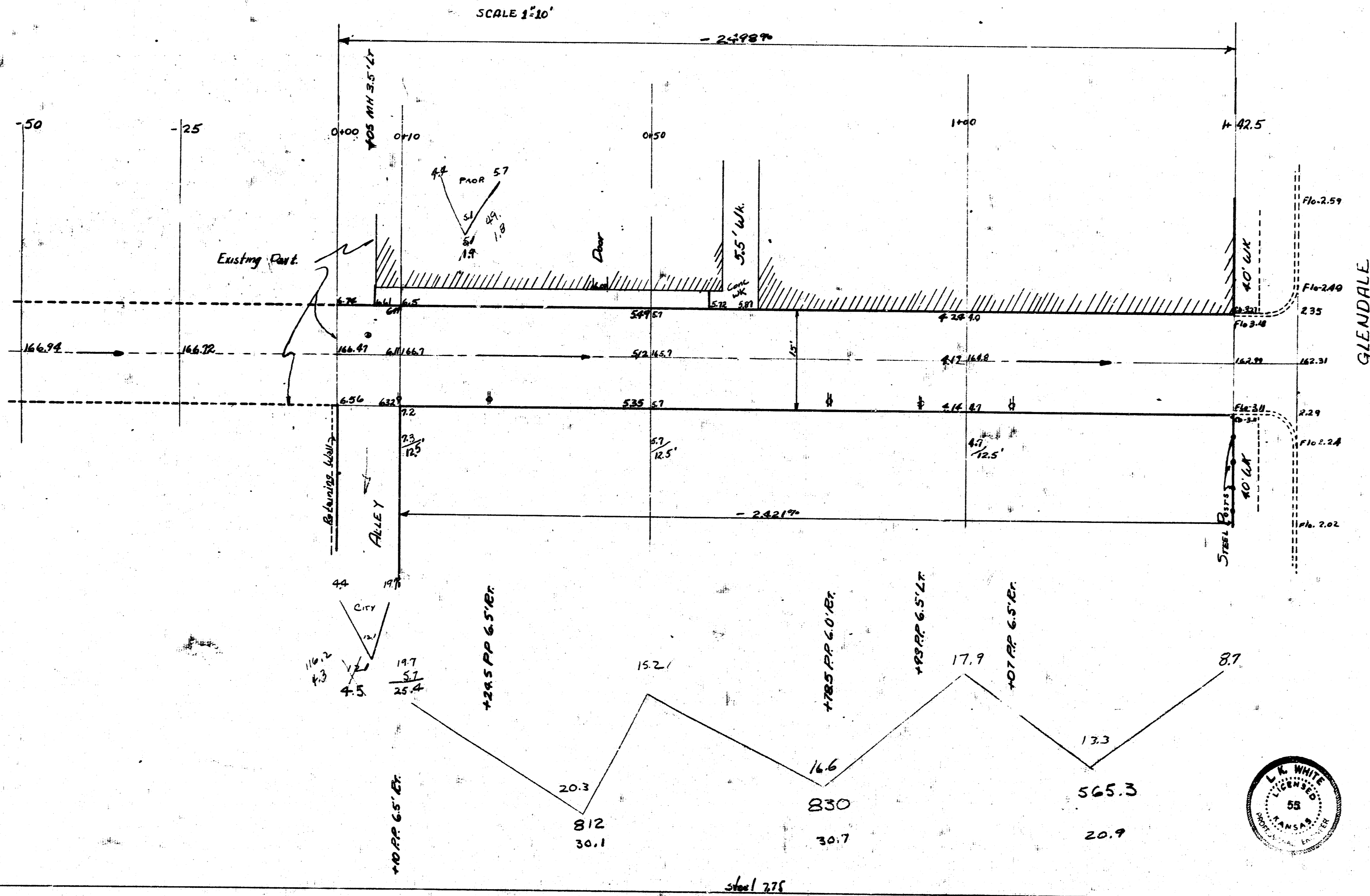
N
 1"=20'

BM 168.54 Std. S.W. cor. Douglas & Oliver
 BM 163.15 "G" in Globe Top of S. Alley Ret. W.H. Glendale.



CITY	PROPERTY
4.5	1.9
102.5	30.1
	31.7
	20.9
	83.6
	9.4
	92.0 cu yds Exc.

Note
 16677 Elev. S. Rim MH



ALLEY So DOUGLAS
 W.L. GLENDALE to W.L. ALLEY-E. OLIVER
 15' - 7" Conc.
 City of Wichita, Kansas
 L.K. White City Engineer
 Nov. 8, 1951 Proj. No. CH-129

