

CONCRETE ALLEY BETWEEN WASHINGTON & IDA

FROM THE NORTH LINE OF LEWIS
TO THE SOUTH LINE OF WATERMAN

PROJECT NO.
472-76-245-81353 · 000-000-001

CITY OF WICHITA, KANSAS
MIKE LINDEBAK, CITY ENGINEER
JULY, 1984

INDEX TO DRAWINGS

SHEET NO.	DESCRIPTION
1	TITLE SHEET
2	ALLEY PLAN
3	MANHOLE ADJUSTMENT DETAILS
4	CROSS SECTIONS

GENERAL NOTES

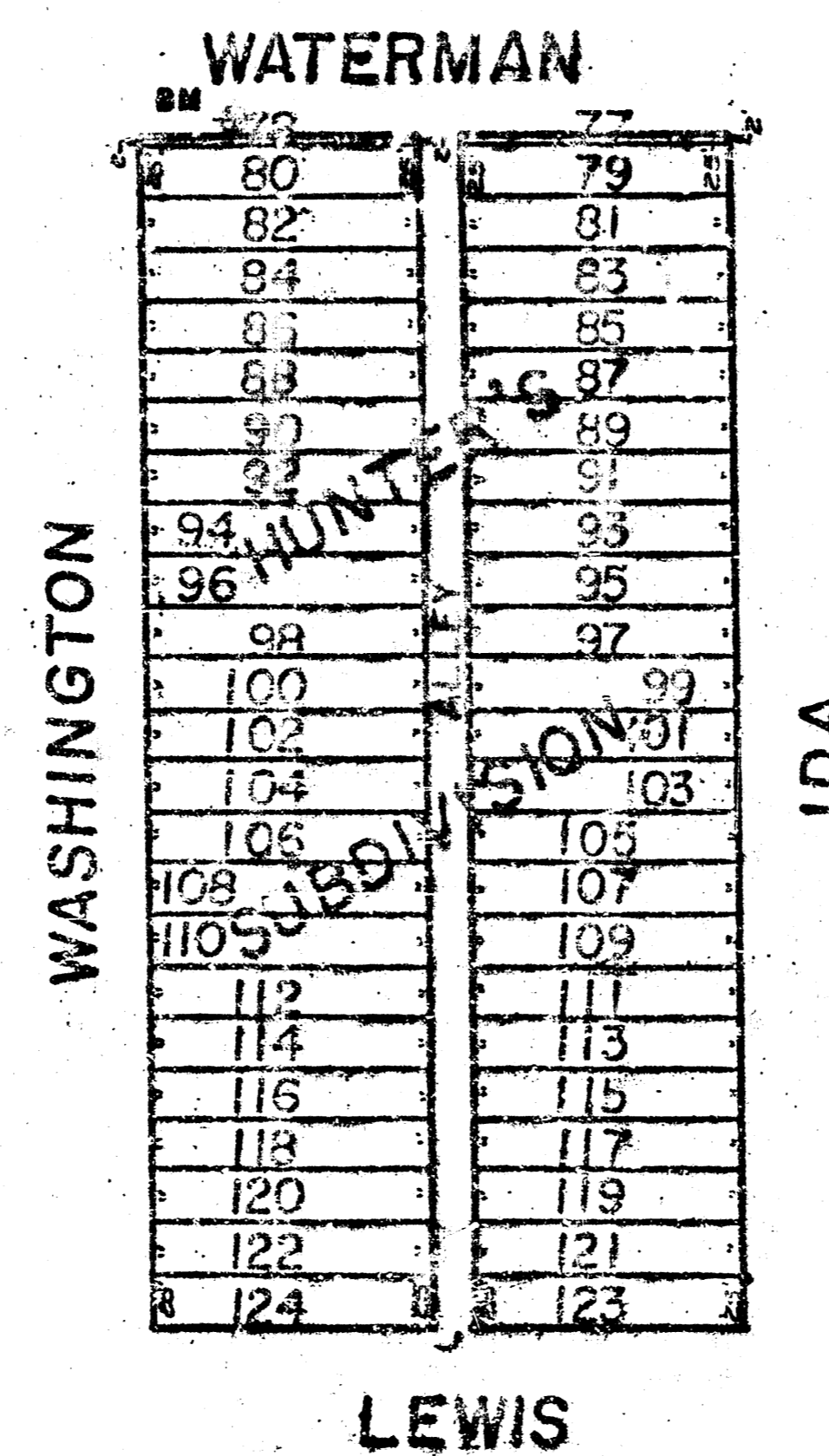
- PAVEMENT SHALL BE 7" CONCRETE ALLEY WITH 6x12 W4-W4 WWF
- CONTRACTOR SHALL BE RESPONSIBLE FOR PRESERVING PROPERTY IRONS. THE CONTRACTOR SHALL BE REQUIRED TO RE-ESTABLISH ANY PROPERTY IRONS WHICH ARE DAMAGED OR DESTROYED BY THIS CONSTRUCTION OPERATOR. SUCH IRONS SHALL BE RE-ESTABLISHED BY A LICENSED LAND SURVEYOR OR A LICENSED PROFESSIONAL ENGINEER IN ACCORDANCE WITH STATE LAWS.
- TREES TO BE REMOVED ARE INDICATED ON THE PLANS. HOWEVER, ANY TREE WHICH CAN BE SAVED, AS DETERMINED BY THE FIELD ENGINEER, SHALL BE REMOVED.
- PAVING CONTRACTOR TO CONTACT UTILITY COMPANIES FOR LOCATION OF ANY UNDERGROUND LINES.

NOTE: NOTIFY THE FOLLOWING COMPANIES PRIOR TO ANY EXCAVATION

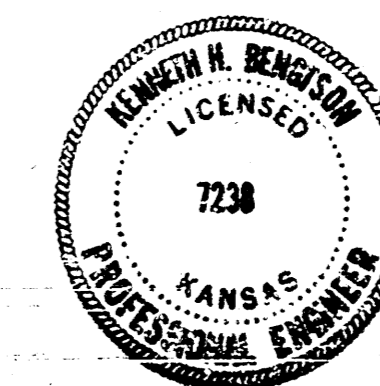
ARKLA GAS COMPANY	942-8350
BELL TELEPHONE COMPANY	268-2256
CABLEVISION	269-3340
GAS SERVICE COMPANY	263-7511
KANSAS GAS & ELECTRIC	261-6375
KAN-U-DIG-IT	267-2889

BENCH MARK

RAILROAD SPIKE IN POWER POLE SOUTH SIDE OF WATERMAN + 100' WEST OF THE ALLEY.
ELEV. = 109.46



Scale: 1" = 100'



PAVING PLANS
FOR
ALLEY BETWEEN
WASHINGTON & IDA

Design
AMS
Drawn by
DLM
Checked by
K.L.B.
Date
JULY, 1984

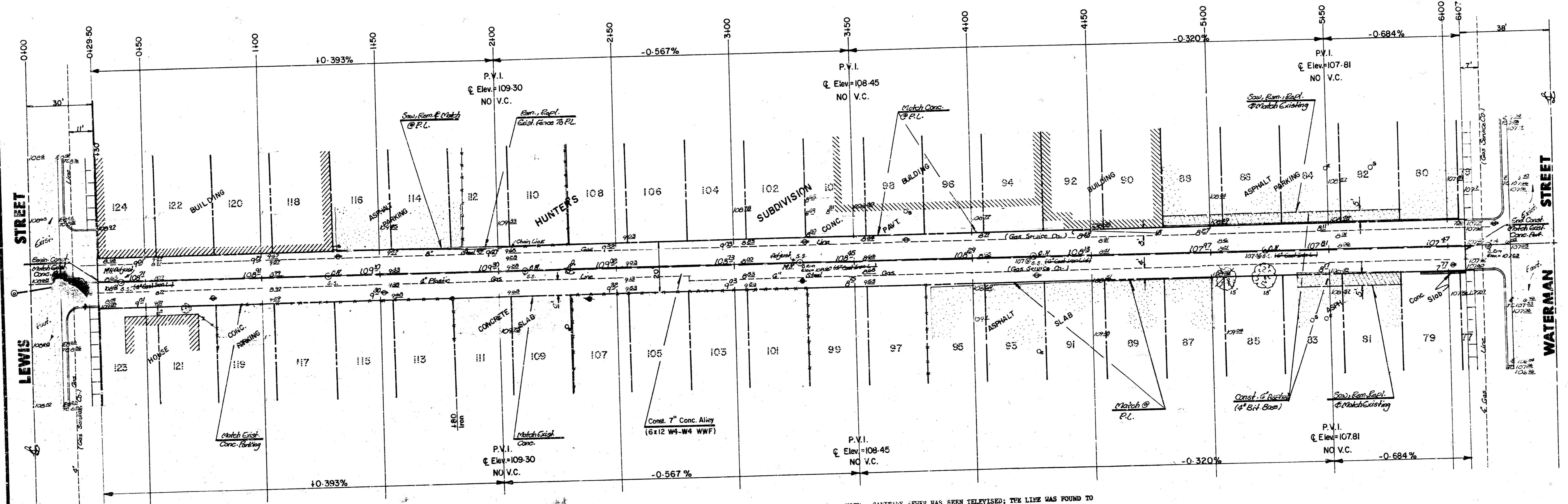
MID-KANSAS ENGINEERING CONSULTANTS PA
240 NORTH ROCK ROAD
SUITE 130
WICHITA, KANSAS 67205

682-6561

Sheet
1
of
4



Scale: 1" = 20'

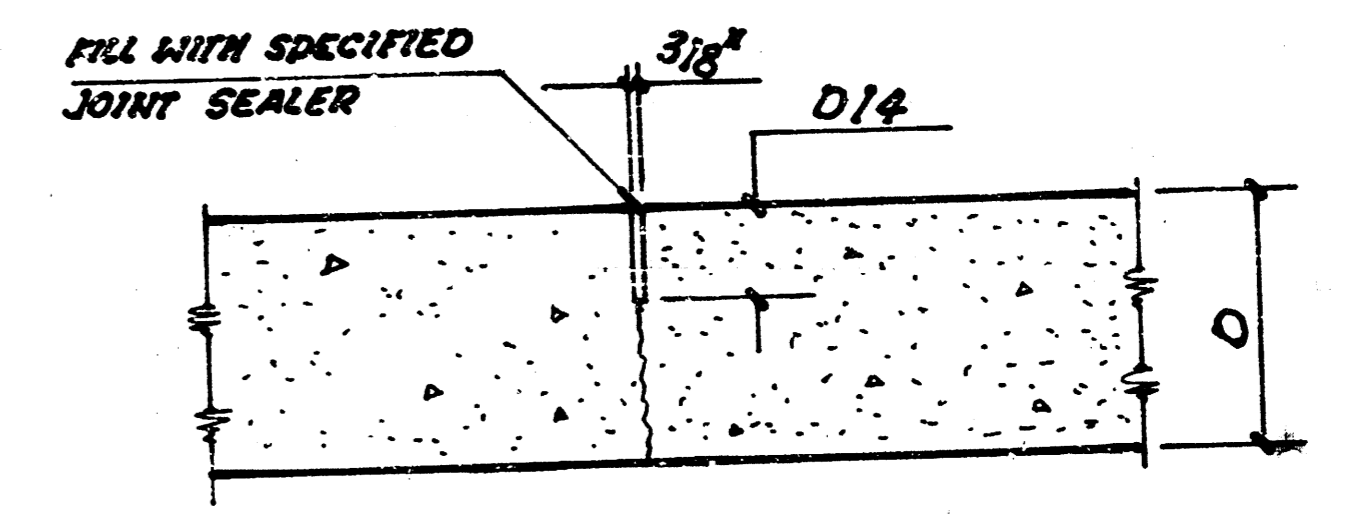


NOTE: SANITARY SEWER HAS BEEN TELEVIEWED; THE LINE WAS FOUND TO BE IN GOOD CONDITION EXCEPT FOR TWO LOCATIONS. THOSE TWO LOCATIONS WILL BE REPAIRED BY SEWER MAINTENANCE PERSONNEL.
SANITARY SEWER LINE SHALL BE RETEVIEWED AFTER SUBGRADE WORK HAS BEEN COMPLETED BUT BEFORE THE PAVEMENT IS PLACED SO SEWER MAINTENANCE PERSONNEL CAN DETERMINE IF THE LINE WAS DAMAGED DURING CONSTRUCTION.

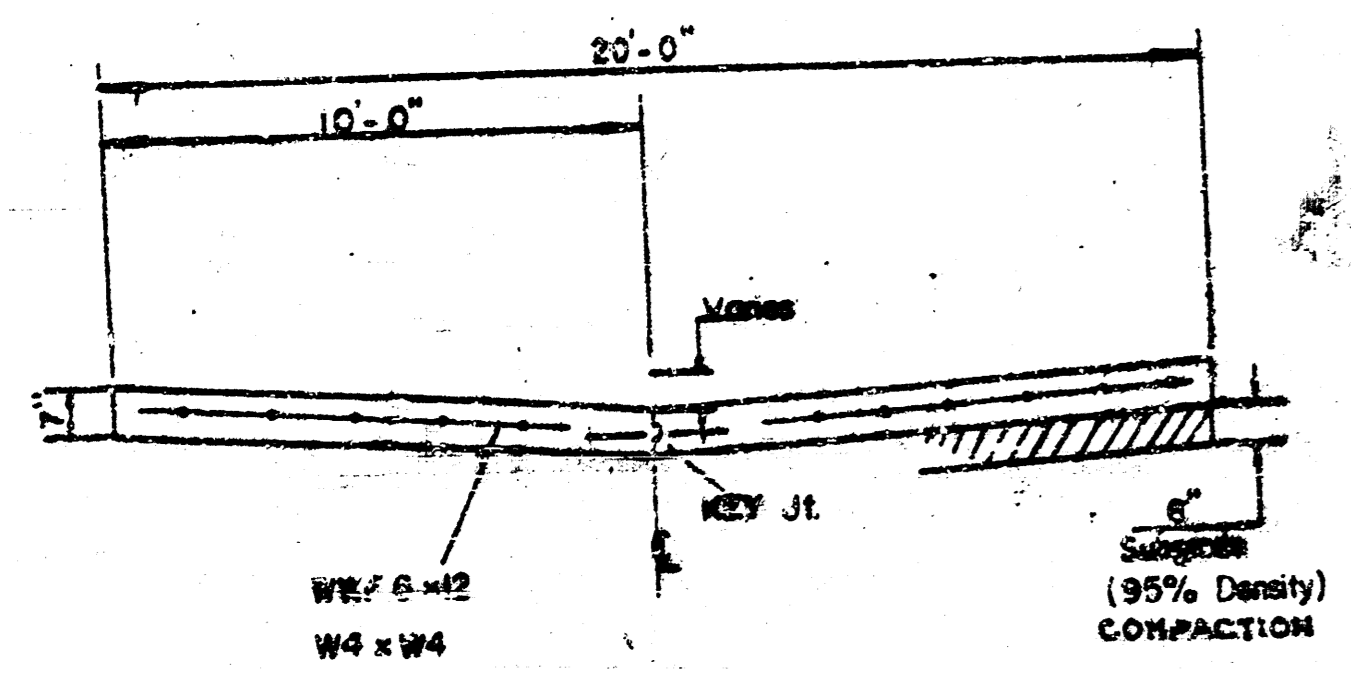
ANY DAMAGE TO THE SEWER SHALL BE CORRECTED BY THE CONTRACTOR AT HIS OWN EXPENSE.

SEWER MAINTENANCE PERSONNEL TO SEAL OFF OBSERVATION NOLES ON 8" SANITARY SEWER LINE PRIOR TO ALLEY PAVEMENT CONSTR.

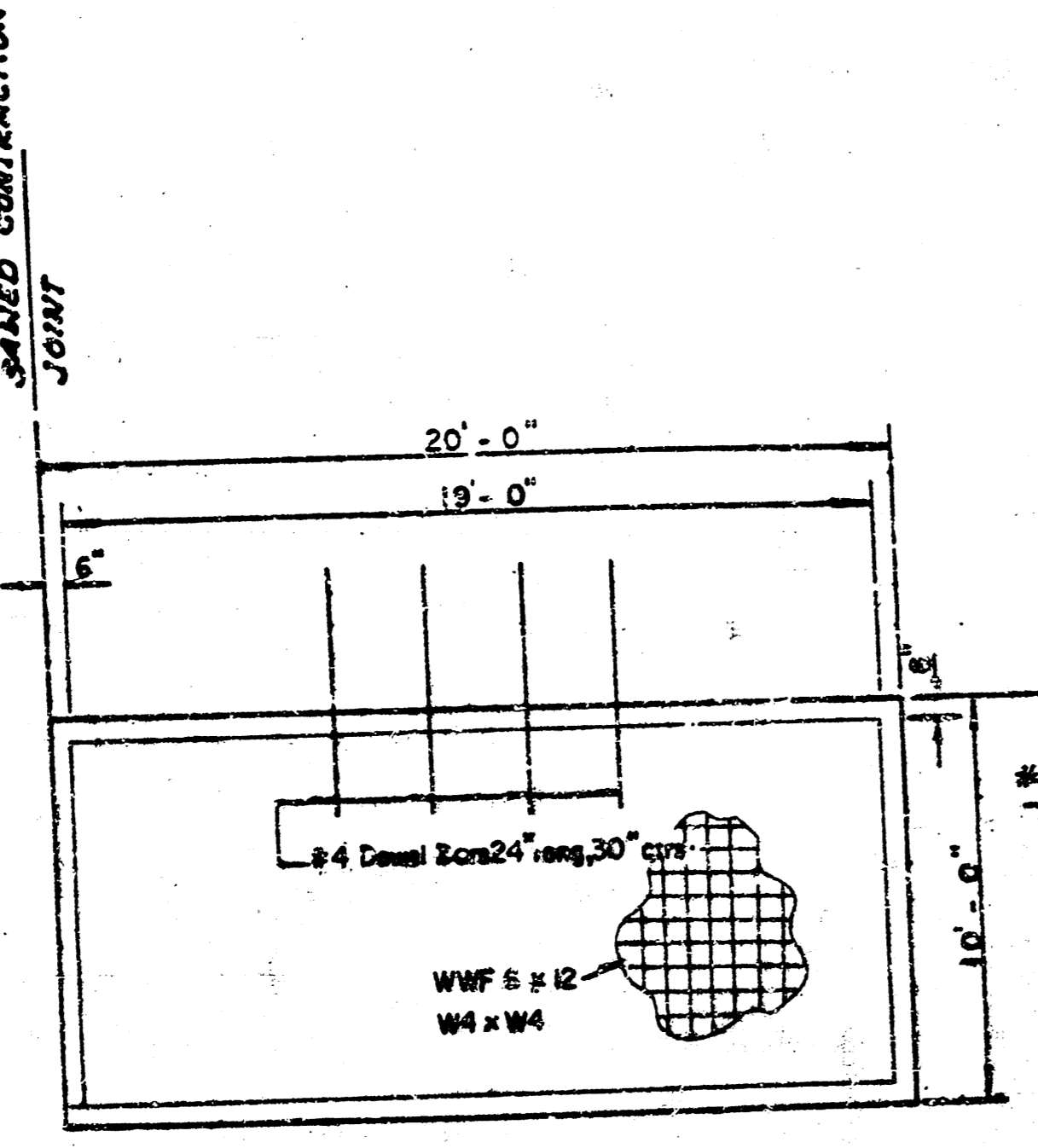
ELEVATION	272.70 C.Y.
+ 10%	27.27
TOTAL	299.97 C.Y.



SAWED TRANSVERSE CONTRACTION JOINT AT 20' INTERVALS.

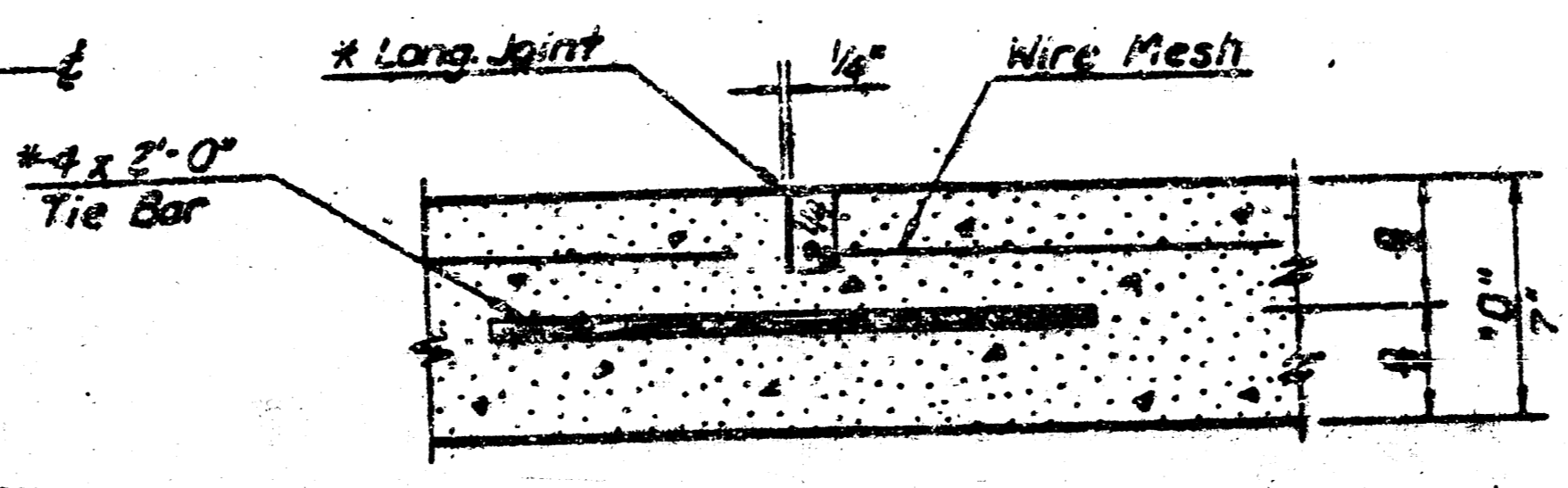


Typical Section
No Scale



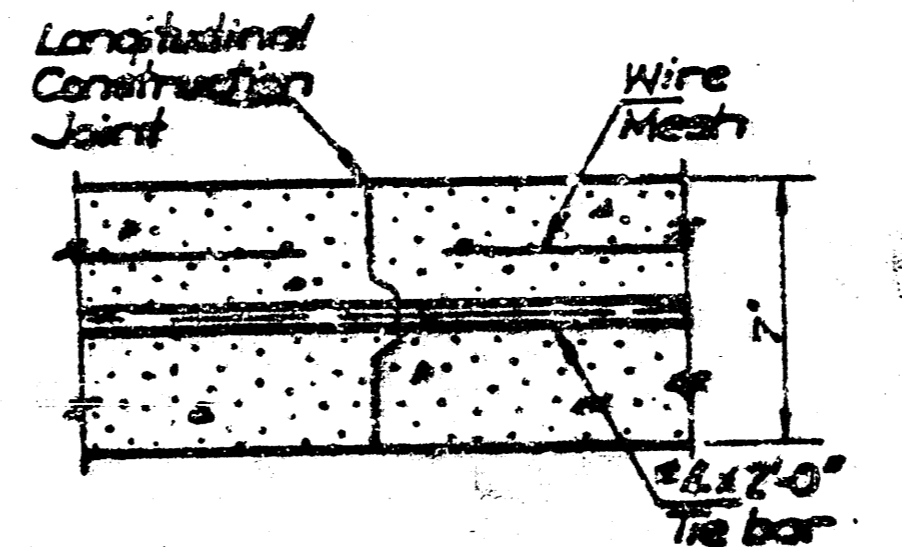
Typical Steel
No Scale

ALL COSTS FOR REINFORCING STEEL IS TO BE INCLUDED IN BID PRICE FOR 8" CONC. PAVEMENT.



LONGITUDINAL JOINT DETAIL
TRANSVERSE SECTION

NOTE: Longitudinal joint formed by sawing 1/4" deep and 1/2" wide and filled as specified in standard specifications.



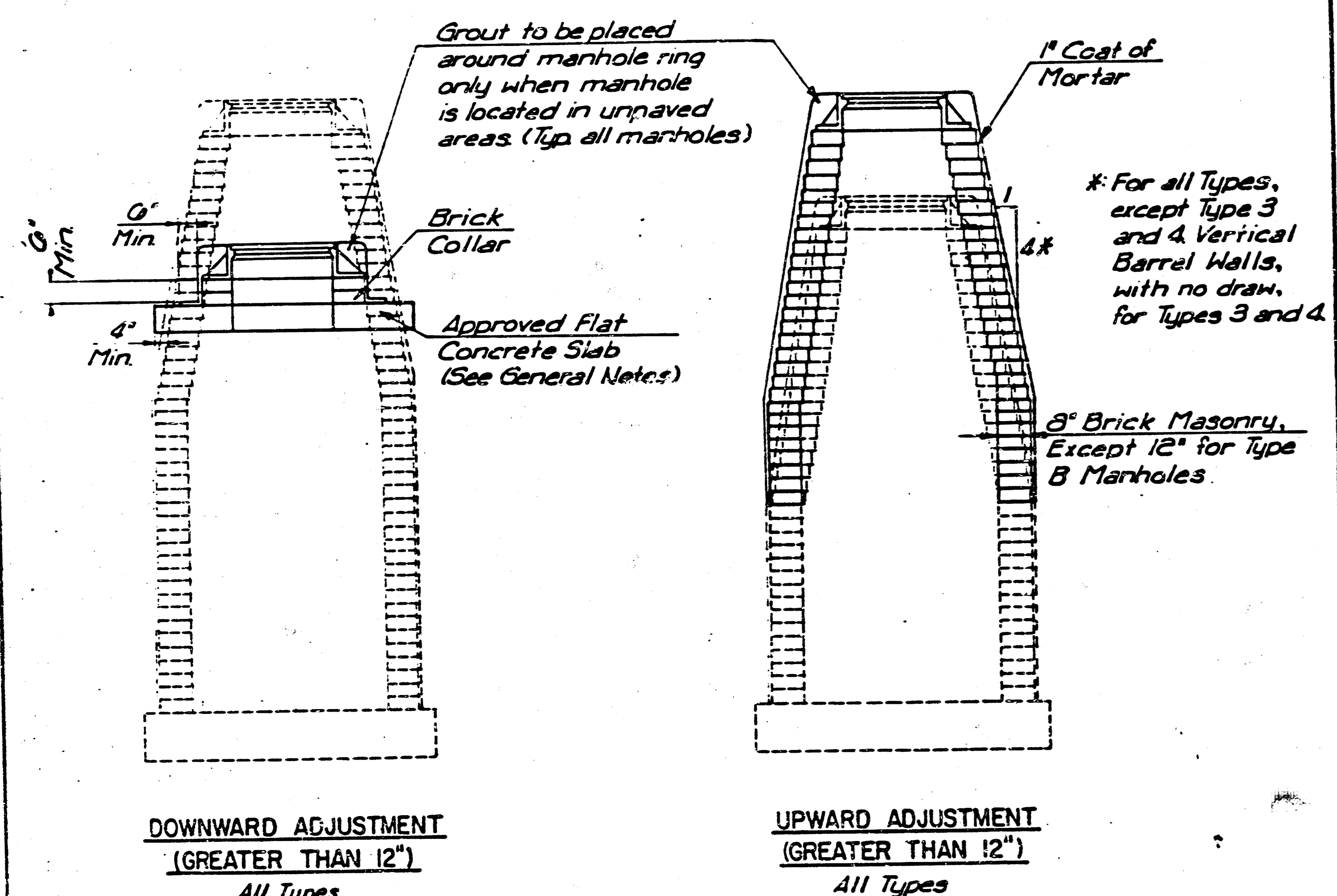
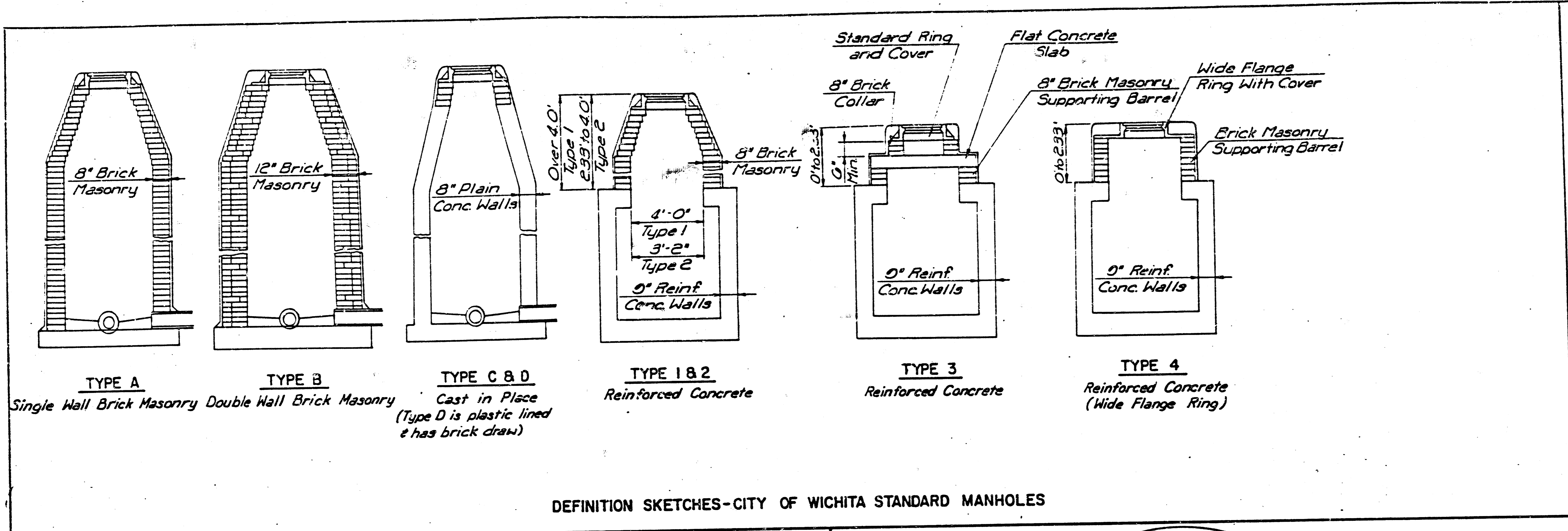
LONGITUDINAL CONSTRUCTION JOINT DETAIL
TRANSVERSE SECTION



ALLEY BETWEEN WASHINGTON & IDA
(From N.L. Lewis To S.L. Waterman)
472-76-245-81353-000-001

MID-KANSAS ENGINEERING CONSULTANTS PA
240 NORTH ROCK ROAD
SUITE 130
WICHITA, KANSAS 67206
682-6561

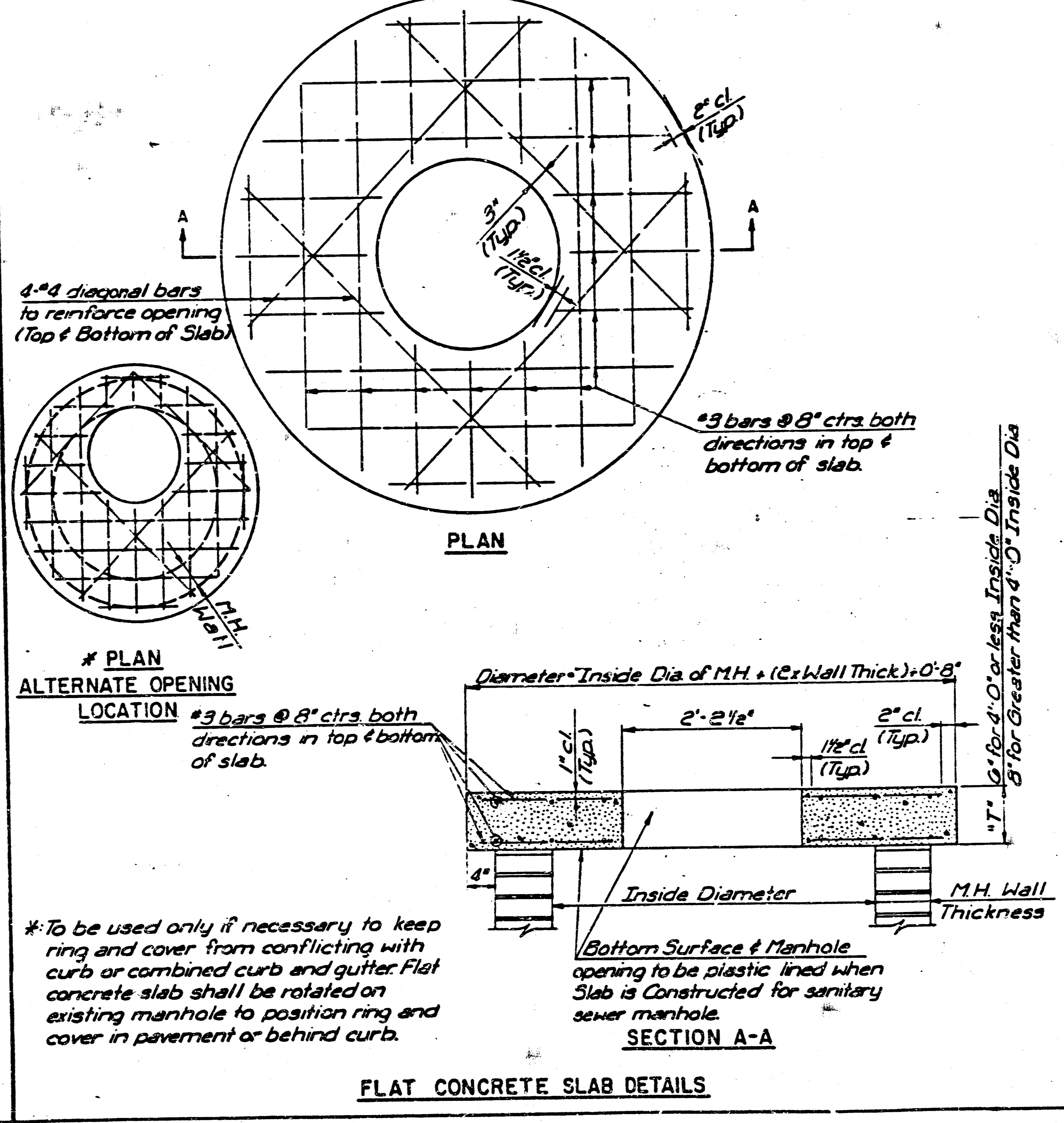
Design	
Drawn by	
Checked by	
Date	
Job no.	
Sheet	2
of	4



THE APPROPRIATE PORTIONS OF THE DRAW AND BARREL OF TYPE A, B, C, D, 1 AND 2 MANHOLES SHALL BE REMOVED. A FLAT CONCRETE SLAB SHALL BE PLACED AND THE RING AND COVER RESET. ALL WORK AND MATERIALS SHALL CONFORM TO THE DETAILS SHOWN AND THE GENERAL NOTES.

COURSES OF BRICK BARREL SUPPORTING THE WIDE FLANGE RING FOR TYPE 4 MANHOLES AND FLAT CONCRETE SLAB FOR TYPE 3 MANHOLES SHALL BE REMOVED AS NECESSARY PRIOR TO RESETTING THE WIDE FLANGE RING OR FLAT CONCRETE SLAB AND RING. ALL WORK AND MATERIALS SHALL CONFORM TO THE DETAILS SHOWN AND THE GENERAL NOTES.

THE ENTIRE DRAW OF TYPES A, B, C, D, 1 AND 2 MANHOLES SHALL BE REMOVED, THE MANHOLE BARREL RAISED THE APPROPRIATE AMOUNT, A NEW DRAW CONSTRUCTED, AND THE RING AND COVER RESET. THE UPPER PORTION OF TYPE 3 MANHOLES SHALL BE REMOVED TO THE BOTTOM OF THE FLAT CONCRETE SLAB, THE BRICK MASONRY BARREL SUPPORTING THE SLAB SHALL BE RAISED THE APPROPRIATE AMOUNT, AND THE SLAB AND RING AND COVER RESET. THE WIDE FLANGE RING AND COVER OF TYPE 4 MANHOLES SHALL BE REMOVED, THE BRICK MASONRY BARREL SUPPORTING THE RING SHALL BE RAISED THE APPROPRIATE AMOUNT AND THE RING AND COVER RESET. ALL WORK REQUIRED FOR A GREATER THAN TWELVE INCH (12") UPWARD ADJUSTMENT OF ANY MANHOLE SHALL BE ACCOMPLISHED WITH BRICK MASONRY IN ACCORDANCE WITH THE DETAILS SHOWN AND THE GENERAL NOTES.



MANHOLE ADJUSTMENT DETAILS	
CITY OF WICHITA, KANSAS	
M. E. LINDEBAK - CITY ENGINEER	
Designed by	Checked by
Drawn by	Date
3	
4	

