

P.O.P.	CITY
77.5	0
92.9	
31.6	
15.8	
25.9	
193.7	
110.9	
213.1	

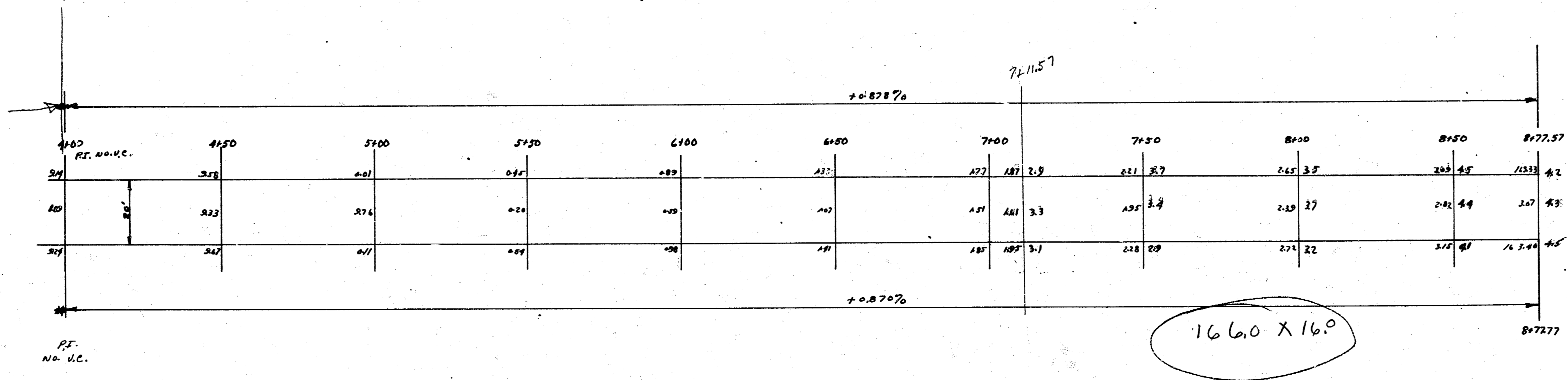
P.O.P.	CITY
213.1	0
242.9	
438.5	
894.5	

1
3

Alley between Eastside & Hunter
 E.L. Woodlawn to N.L. Orme
 6' conc. ~ 20' wide
 City of Wichita, Kansas
 L. K. White ~ City Engineer
 August 1950 Private Job

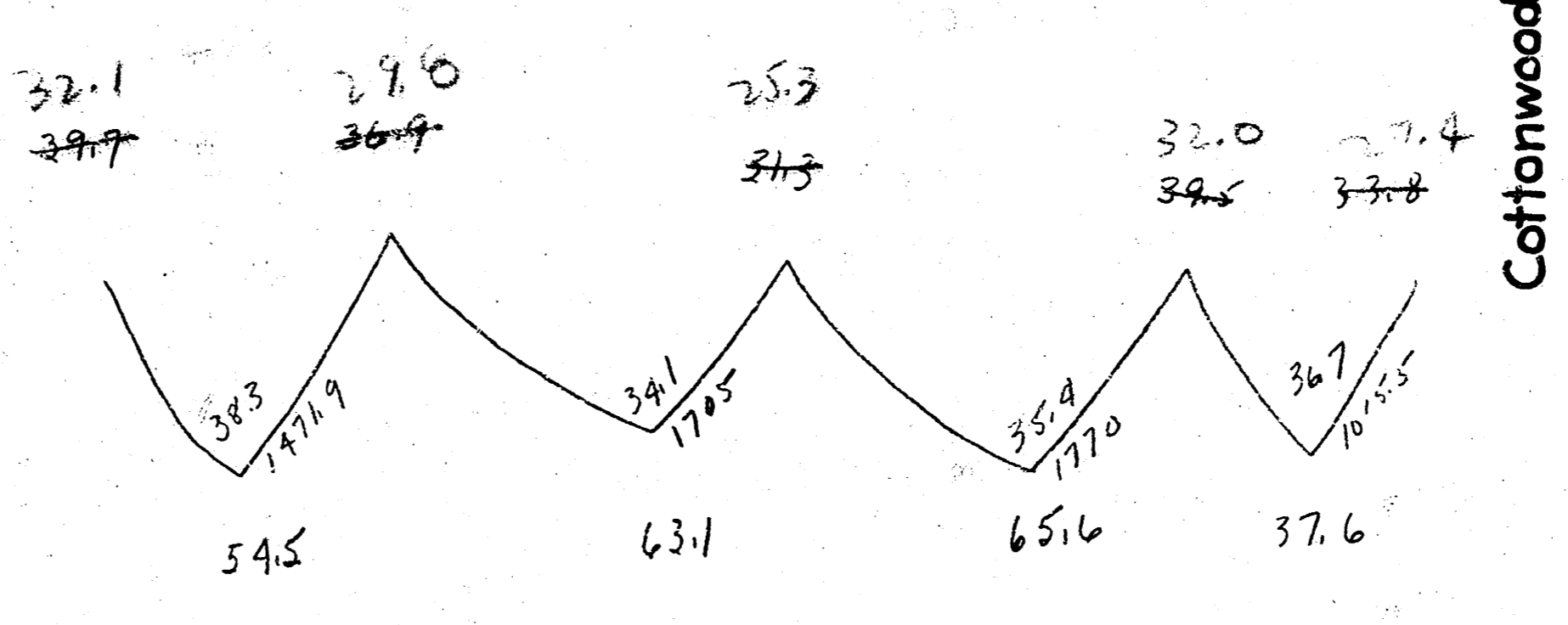
Note to field engineers -
Cross sections to be taken before
construction begins.

B.M. 1563? ~ S.E. corner East headwall R.C.B.C. No. 03053764



166.0 x 16.0

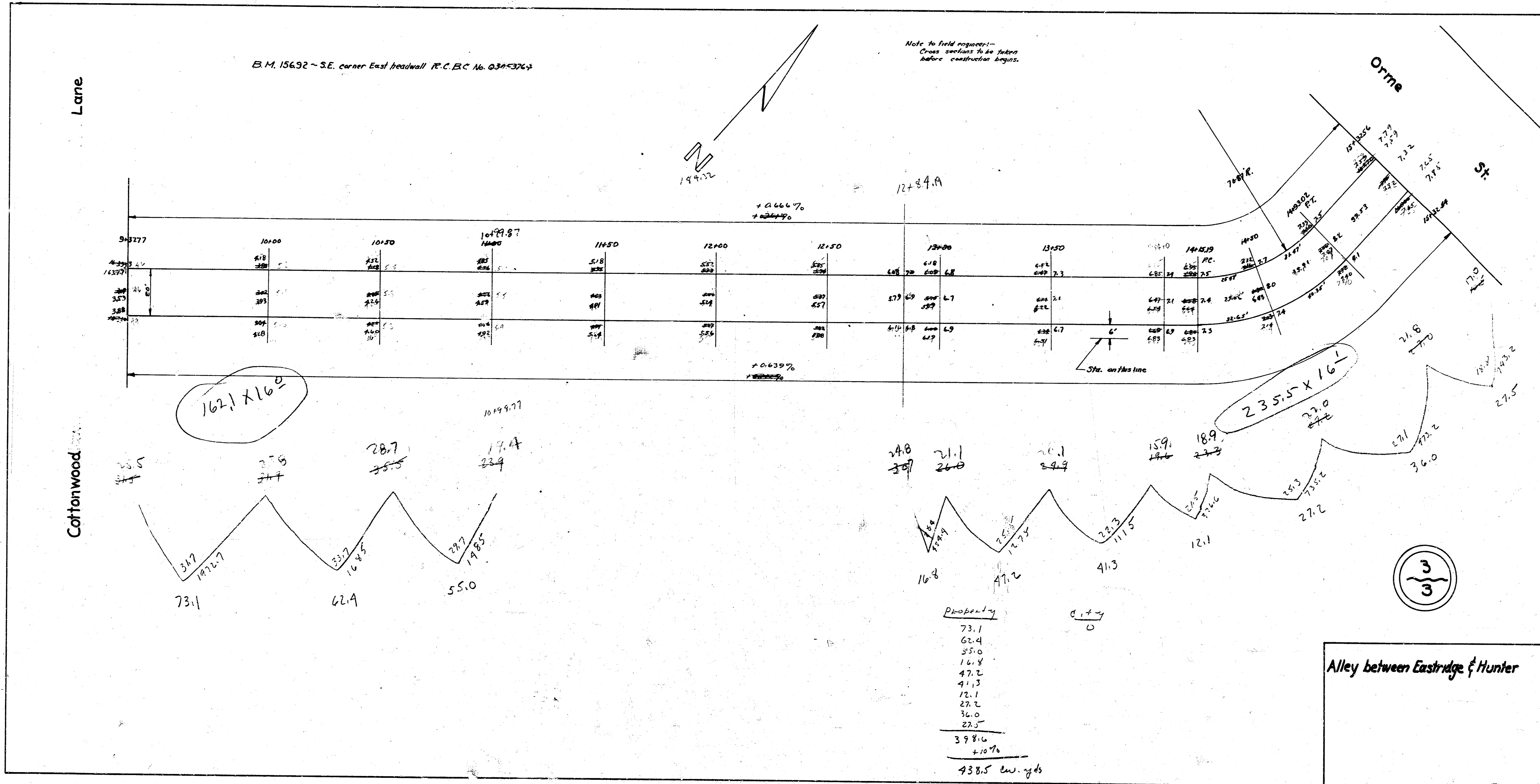
Profile
59.5
63.1
65.6
37.6
220.8
+10%
242.9 w. gds.



2
3

B.M. 15632 ~ S.E. corner East headwall P.C. B.C. No. 038-3763

Note to field engineers:-
Cross sections to be taken
before construction begins.



Property	Width
73.1	
62.4	
55.0	
16.4	
47.2	
41.3	
12.1	
27.2	
36.0	
27.5	
398.6	
+10%	
438.5	ew. yds

Alley between Eastridge & Hunter