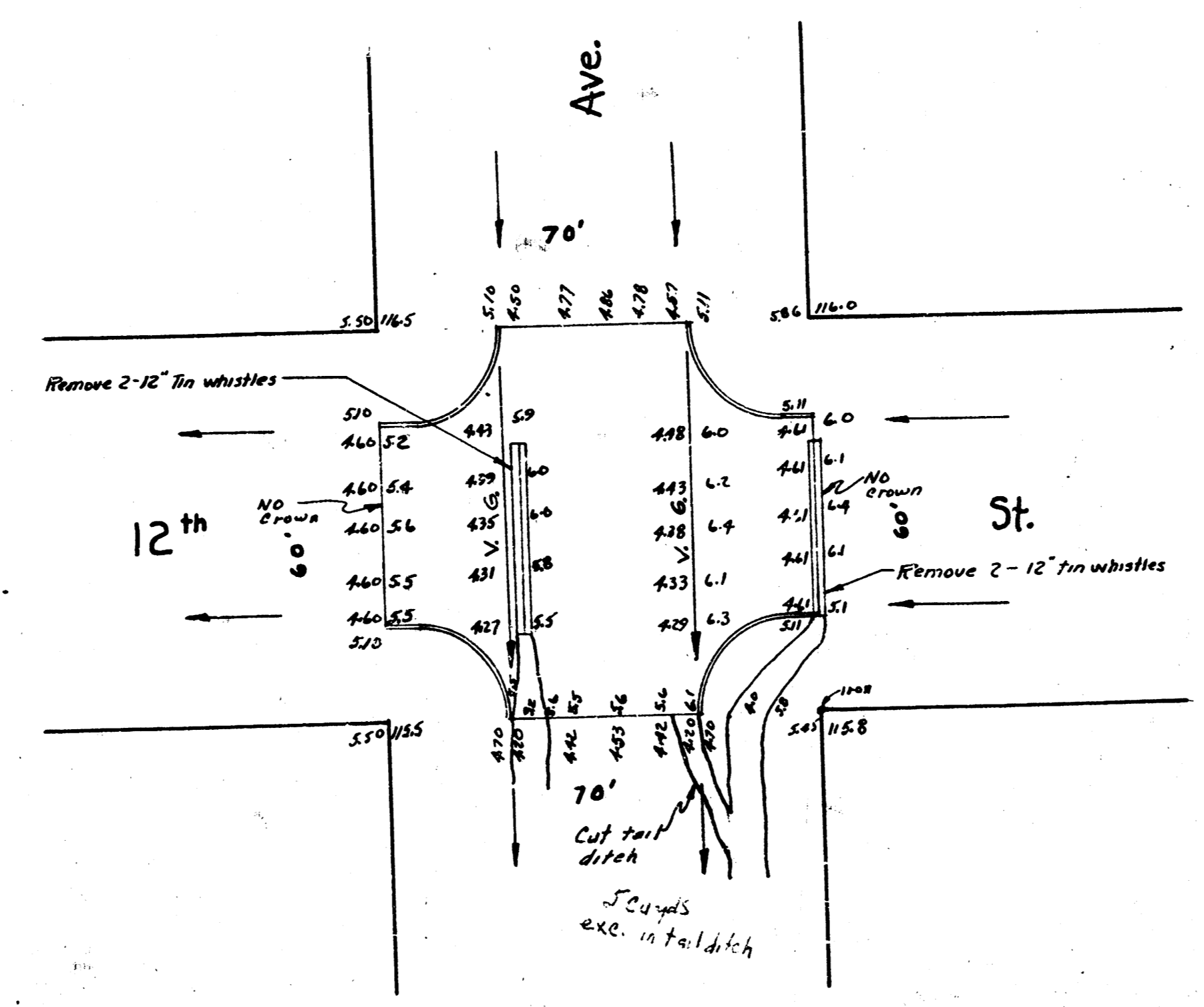


H. 2

B.M. 11308 - 6" in Globe, W. of Minneapolis, N.L. 12th



City
 47.6
 58.0
 80.2
 5.0
 190.8
 +10%
 209.9 w yds.

77
 43.6
 2.8
 54.1
 17.6

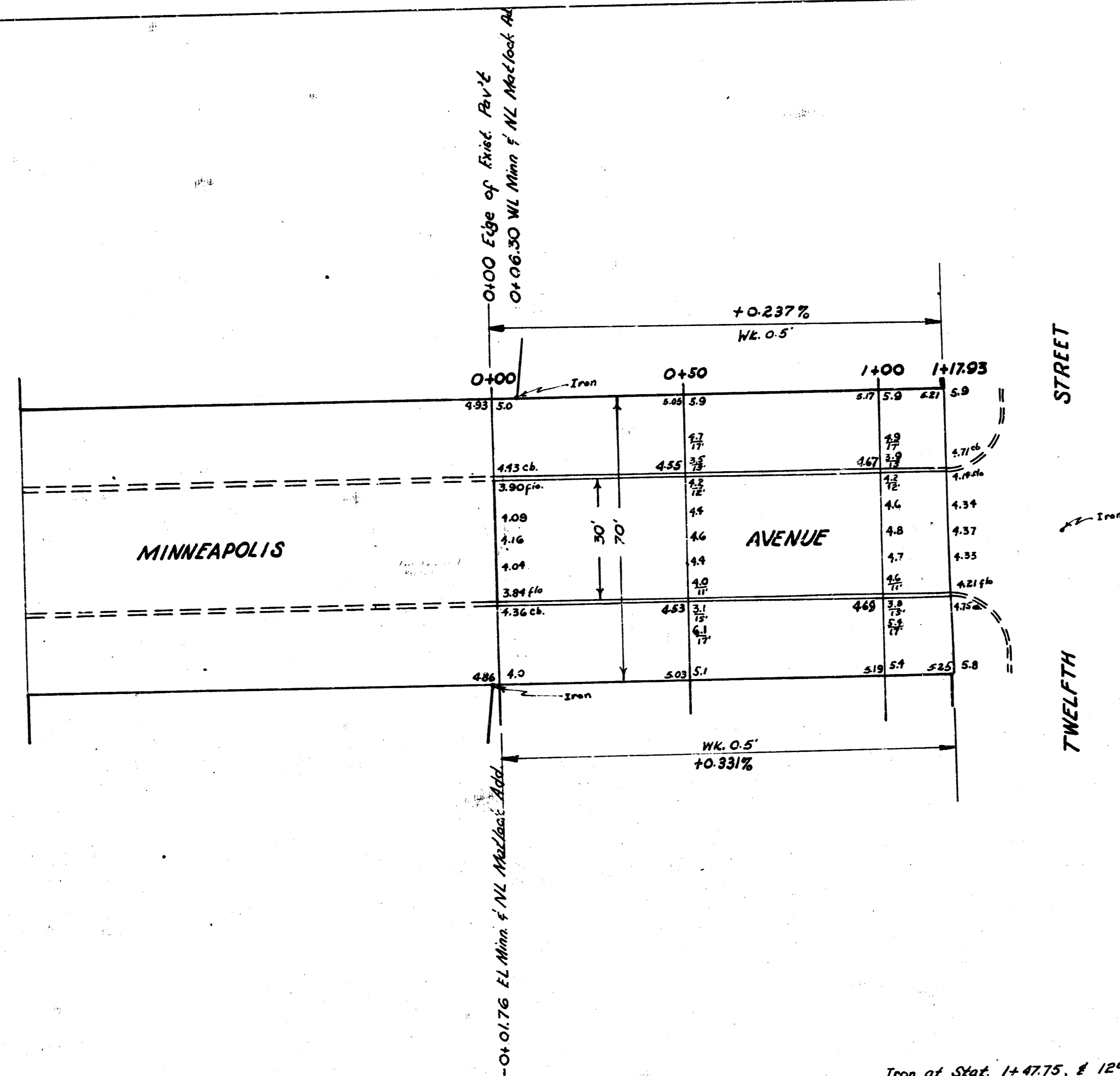
81.0
 Minneapolis
 93.3

7.3
 61.7
 2.5
 71.5
 58.0

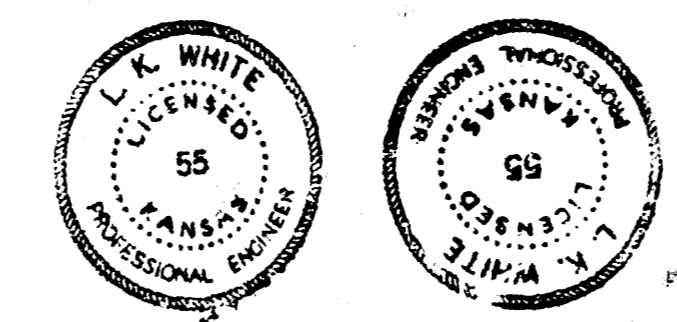
Intersection
 12th & Minneapolis
 6" concrete
 City of Wichita, Kansas
 L. K. White - City Engineer
 October 1950 Proj. #C10-129

MEG-1

BM. 115.00 "G" in Globe W. ch. Minneapolis, N.C. 124



Iron at Stat. 1+47.75, 12th and Minneapolis

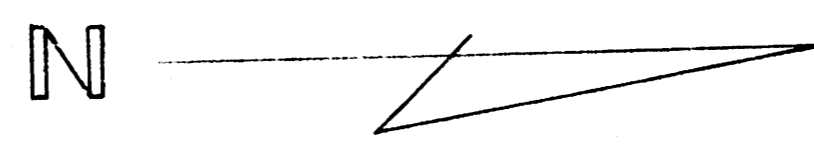


421

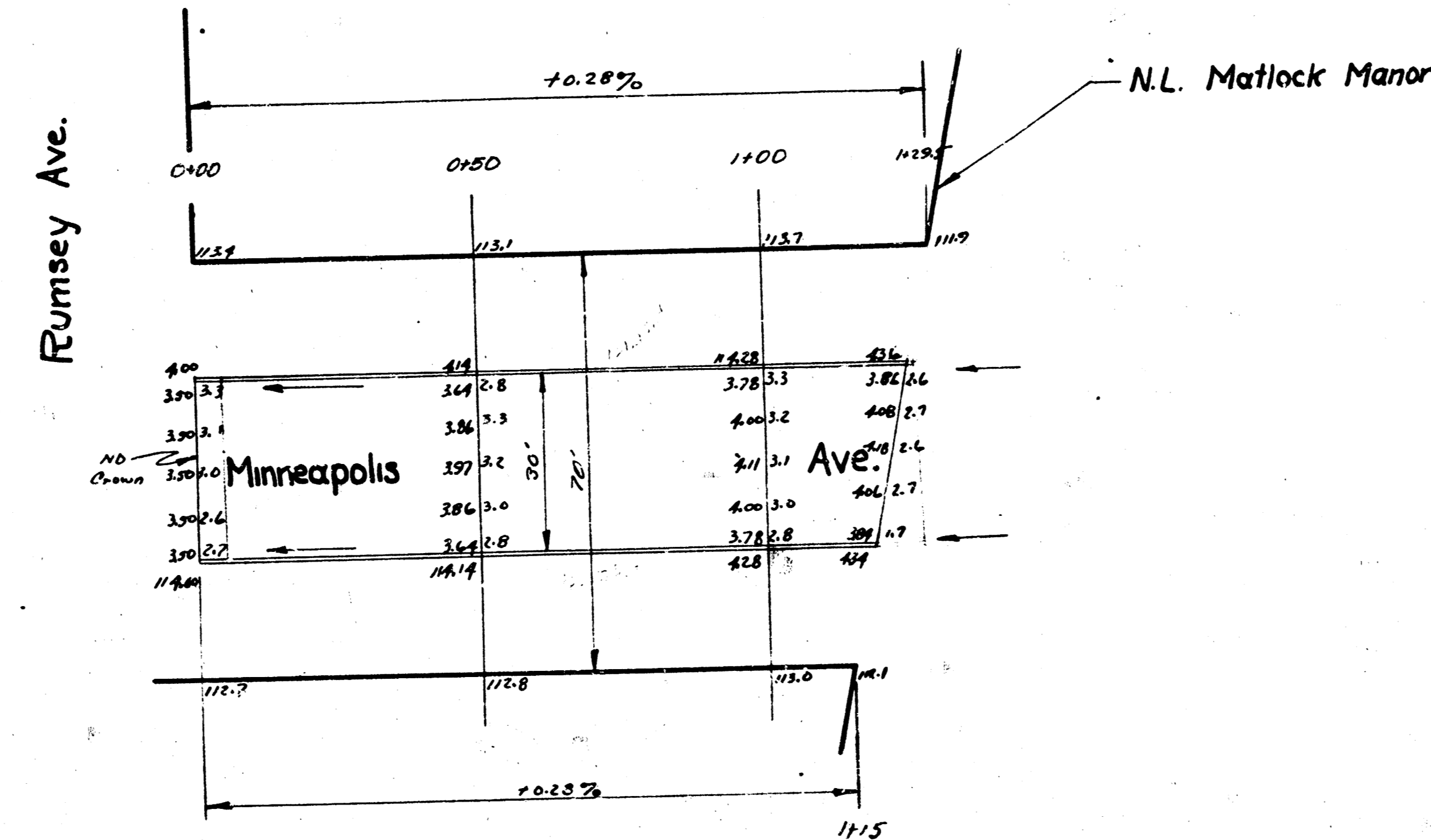
MINNEAPOLIS AVENUE
 N.L. MATLOCK A. to S.L. TWELFTH
 30' Conc. and C.
 City of Wichita Kansas
 L.K. White City Engineer
 Feb. 1957 Proj. No. C102M

394

B.M. 11139 - 4" in Mueller, fire hydrant, N.W. corner hydr. of 11th



NOTE -
Any fill under pav't. to be stabilized by mixing
1/2" sand with 1/2" dirt & compacting with sheeps
foot roller.



Minneapolis Ave.
 N.L. Rumsley to N.L. Matlock Manor
 30' conc. f. cb.
 City of Wichita, Kansas
 L. K. White ~ City Engineer
 October 1950 Private Job