

ALLEY IMPROVEMENT

Between Lorraine and Hillside
From the N.L. Waterman to the S.L. English

Project No.

472-76-245-81923-000-000-001

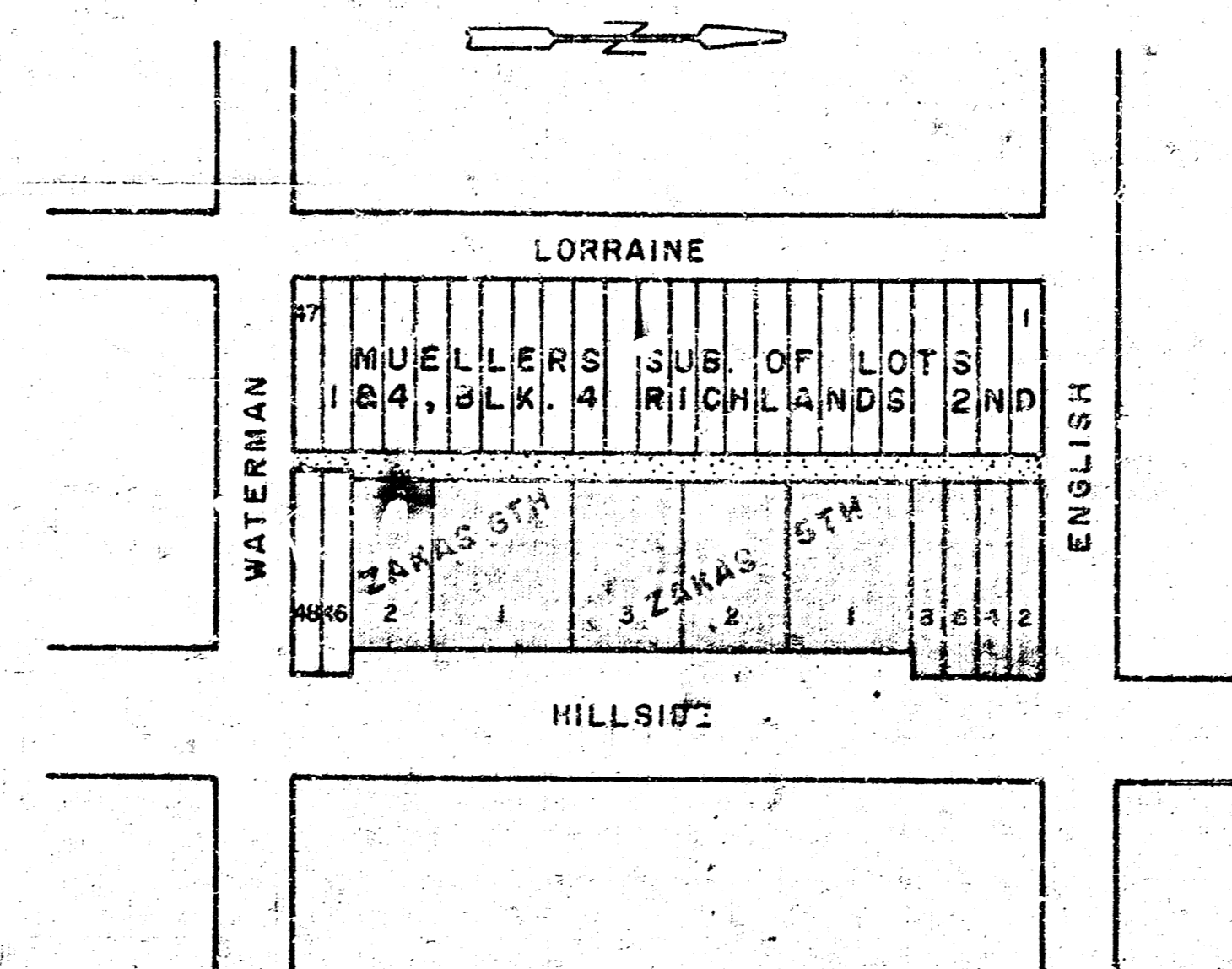
Index No. 608414

CITY OF WICHITA, KANSAS

Michael E. Lindebak City Engineer

Index

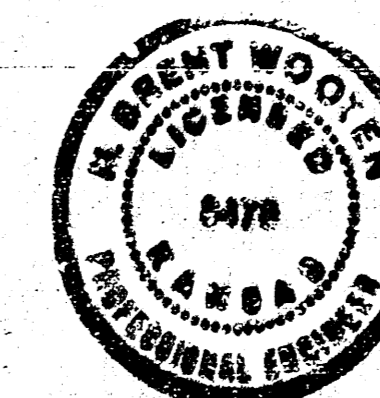
1. TITLE SHEET
2. PAVEMENT PLANS
3. PAVING DETAILS
4. EARTHWORK SECTIONS



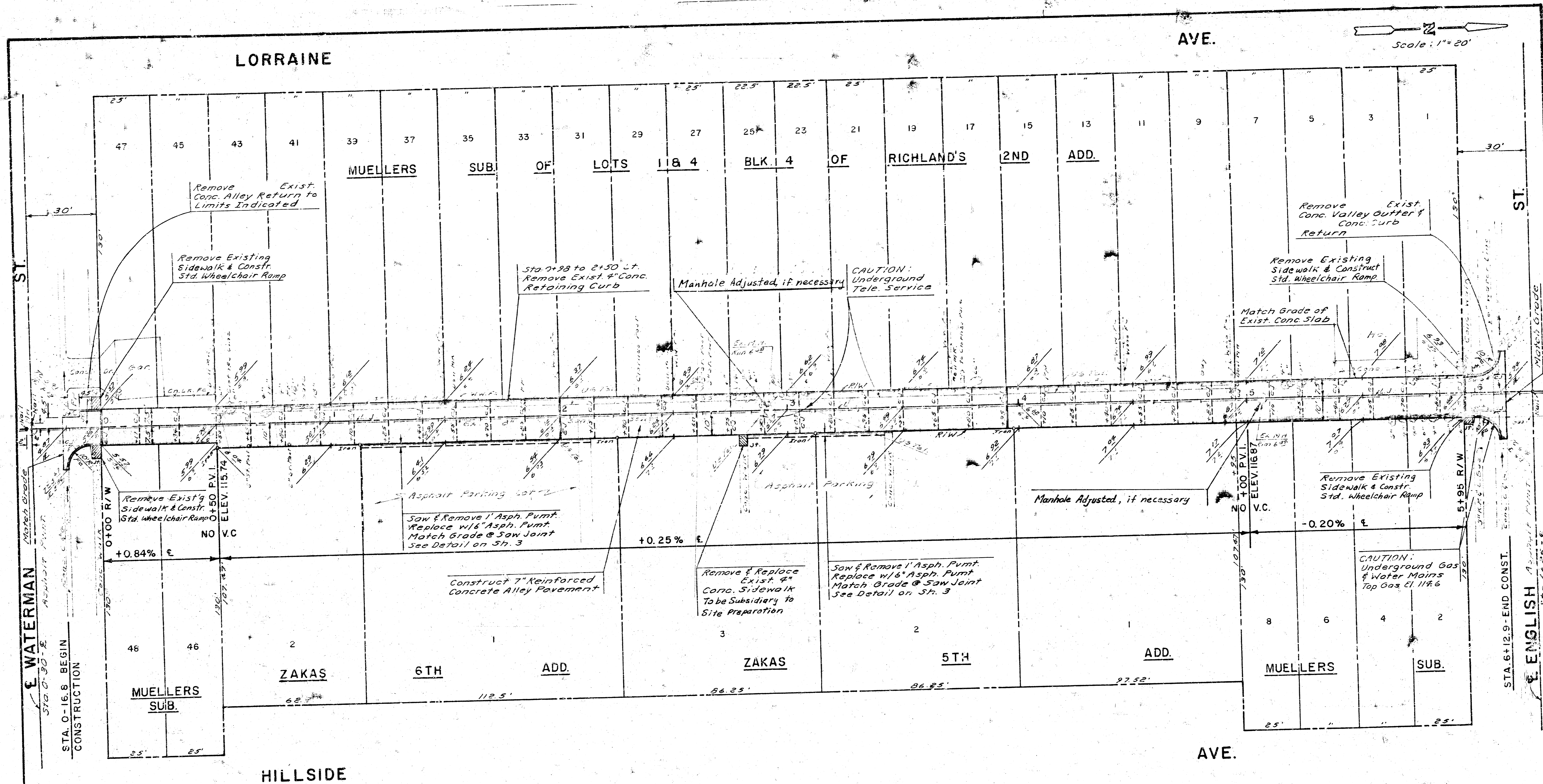
Benefit District

General Notes

1. No traffic will be carried through the project.
2. Existing utilities and their location, as shown on the plans, represent the best information obtainable for design. The contractor will be required to work around existing utilities within the right-of-way which do not conflict with proposed construction.
3. Rubble from the removal of miscellaneous structures and excess excavation which is to be seated shall be disposed of on sites to be provided by the Contractor. These sites shall be approved by the Engineer as to suitability, appearance and site location. Locations that, in the opinion of the Engineer, will leave an unsightly appearance will not be approved.
4. The City of Wichita's Sewer Maintenance Division of the Department of Water and Water Pollution Control has televised sewers within the limits of the project and has found no defects requiring repair. The Division shall be notified and afforded the opportunity to re-televiser sewer lines after subgrade work has been completed and prior to pavement construction to determine if such sewer lines have been damaged by the Contractor's operations. Damaged sewer lines will be repaired by the Contractor, as directed by the Engineer, at the Contractor's expense. Television logs are available for inspection by the Contractor during normal office hours at the Sewer Maintenance Division's office at City Hall.
5. Trees and shrubs in public right-of-way which are in direct conflict with proposed new construction shall be removed by the Contractor with the Engineer's approval. Trees and shrubs which are not in direct conflict with proposed new construction shall be saved and protected from damage.
6. The Contractor shall be responsible for preserving property irons. The Contractor will be required to re-establish any property irons which are damaged or destroyed by his construction operations. Such irons shall be re-established by a licensed land surveyor in accordance with state laws.
7. The Contractor shall give all property owners and/or tenants of developed property abutting the project limits a minimum of ten (10) days advance notice prior to start of construction.



BAUGHMAN COMPANY P. A.
SURVEYING & ENGINEERING
316/252-7271 • 315 ELLIS • WICHITA, KANSAS 67211



Existing Fence to be Removed *

| Sta. to Sta. | Side | L.F. | Type Fence |
|---------------|--------|------|------------------|
| 0+50 | 0+98.8 | 48.8 | 4' Chain Link |
| 1+98.5 | 2+00 | 50.5 | Woven Wire |
| 2+00 | 2+98.8 | 98.8 | Woven Wire |
| 2+50 | 3+20 | 70.0 | Woven Wire |
| 3+20 | 3+71.3 | 51.3 | Woven Wire |
| 3+71.3 | 4+46.5 | 75.2 | Woven Wire |
| 4+46.5 | 4+93.2 | 46.7 | 6' Wood |
| 4+93.2 | 5+39 | 45.8 | 6' Wood |
| 5+39 | 5+92.6 | 53.6 | 2 1/2" Wood Rail |
| TOTAL = 456.6 | | | |

* Note: The contractor shall replace that portion of the fence which is not encroaching into the R/W.

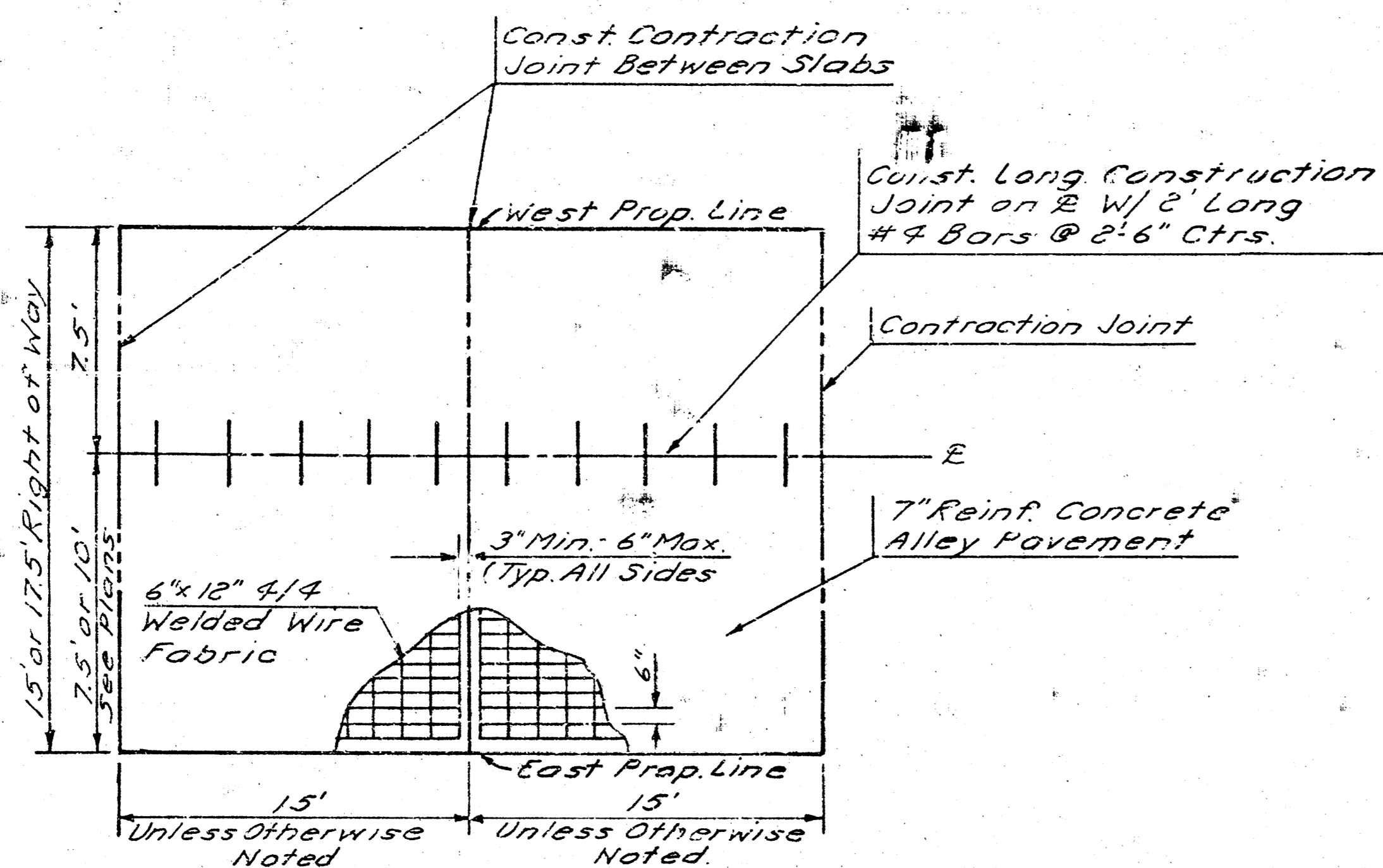
Earthwork Quantities
 Excavation = 306.6 CY
 +10% = 307.3 CY
 Total = 337.3 CY
 Compacted Fill = 0

NOTES: Contractor shall contact utility companies that have lines within alley right of way to ascertain whether they may want to relocate their lines prior to construction of the alley pavement.

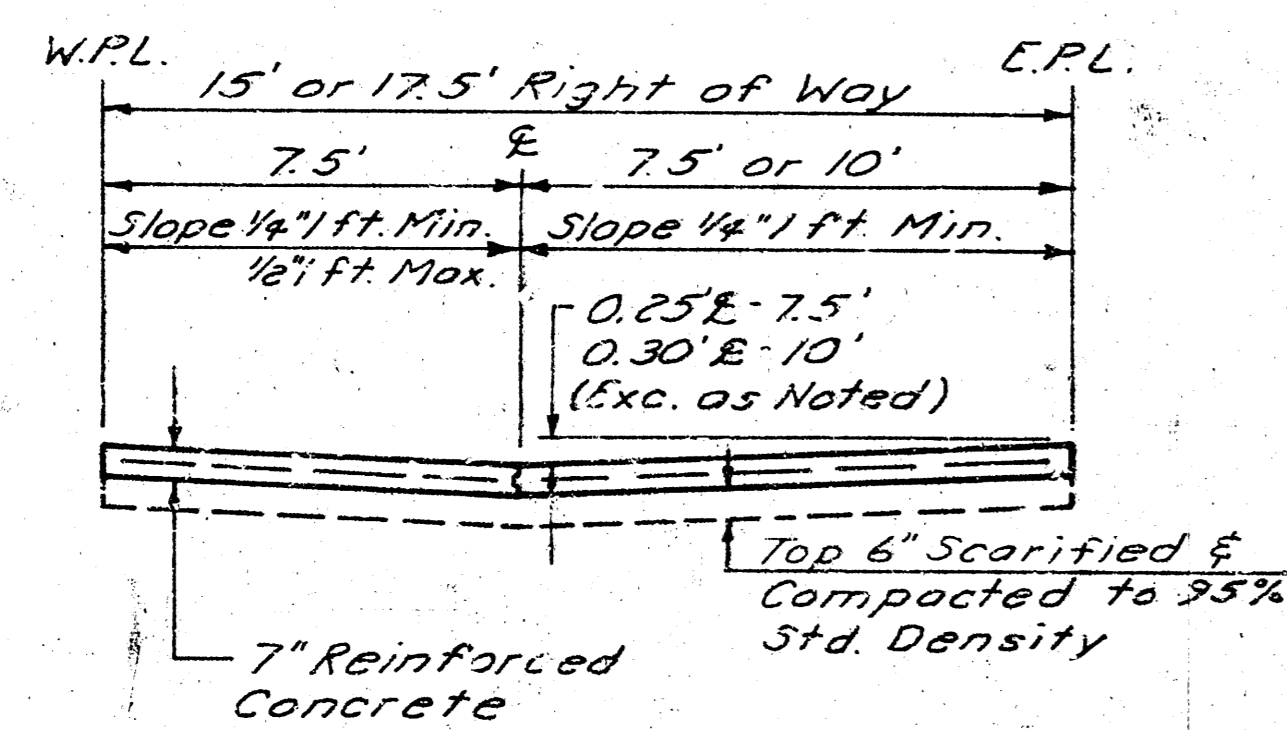
PAVEMENT FOR ALLEY BOUNDED BY HILLSIDE AVE - LORRAINE AVE - ENGLISH ST. & WATERMAN ST.
 PROJ. NO. 472 81923 INDEX NO. 608414
BAUGHMAN COMPANY, P.A.
 SURVEYING & ENGINEERING
 316262-7271 • 315 SULLY • WICHITA, KANSAS 67211
 Design: N817 Date: 1/24/11
 Check: JCL Date: 1/24/11
 Scale: 1" = 20'

B.M. - RR Spk. in E. Face of PP - 6.9' LT. STA. 5+95.8 Elev. 117.31

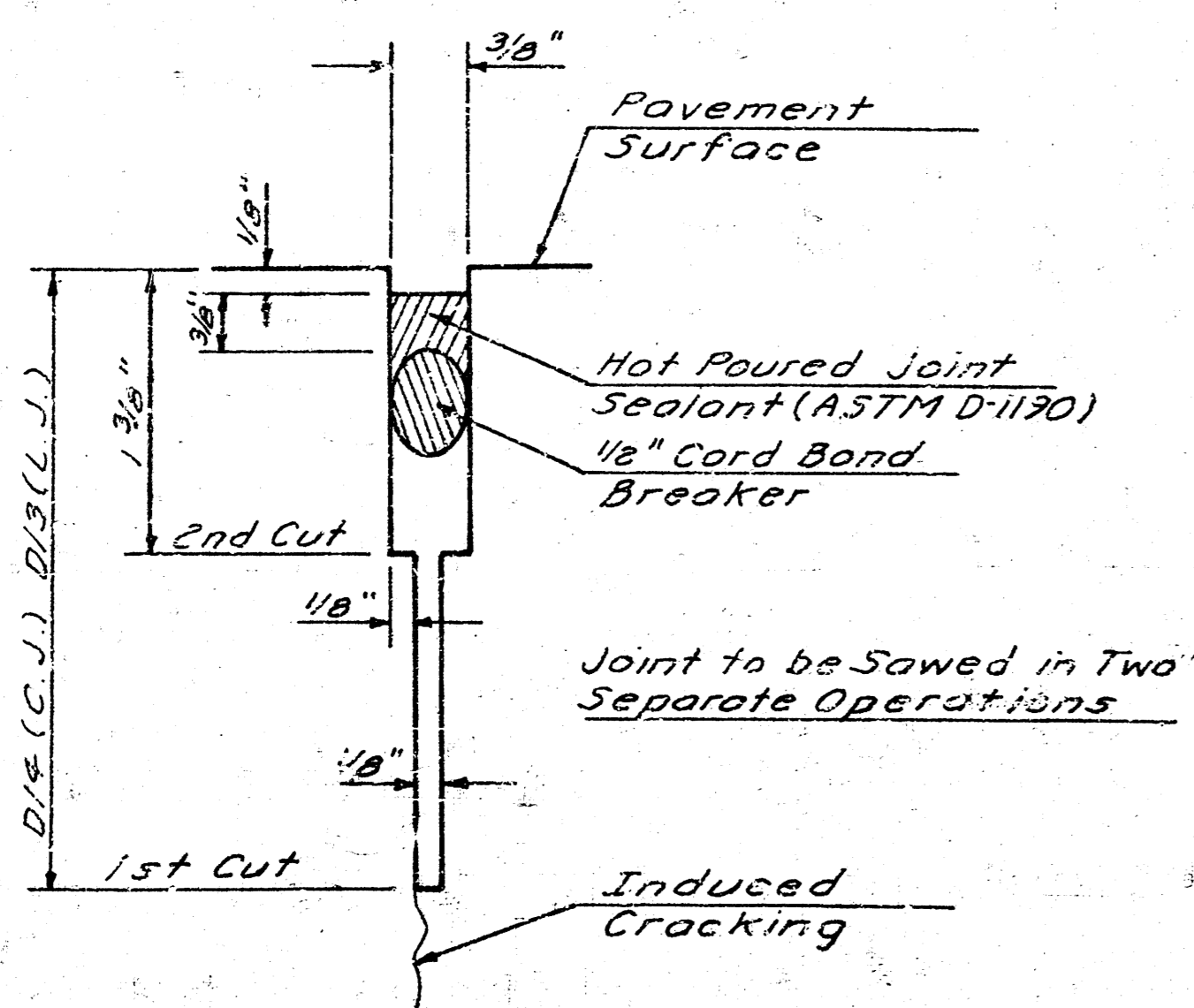
B.M. - RR Spk. in E. Face of PP - 4.7' LT. STA. 0-12 Elev. 115.87



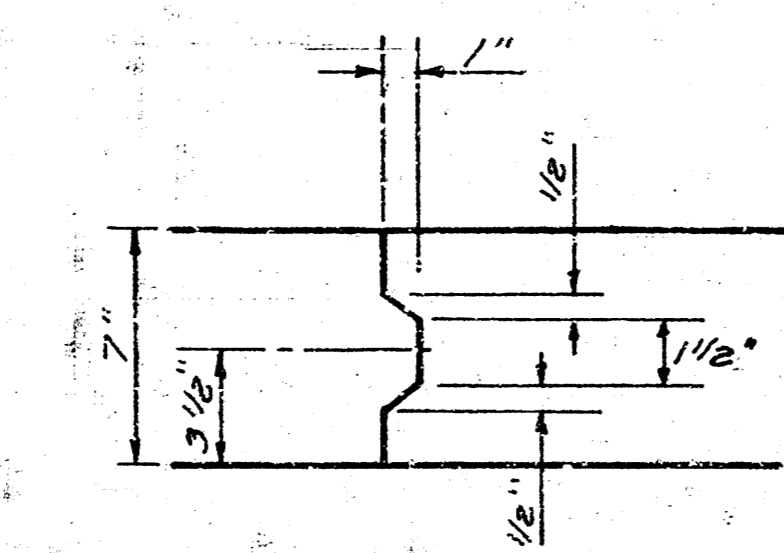
SLAB REINFORCEMENT DETAIL



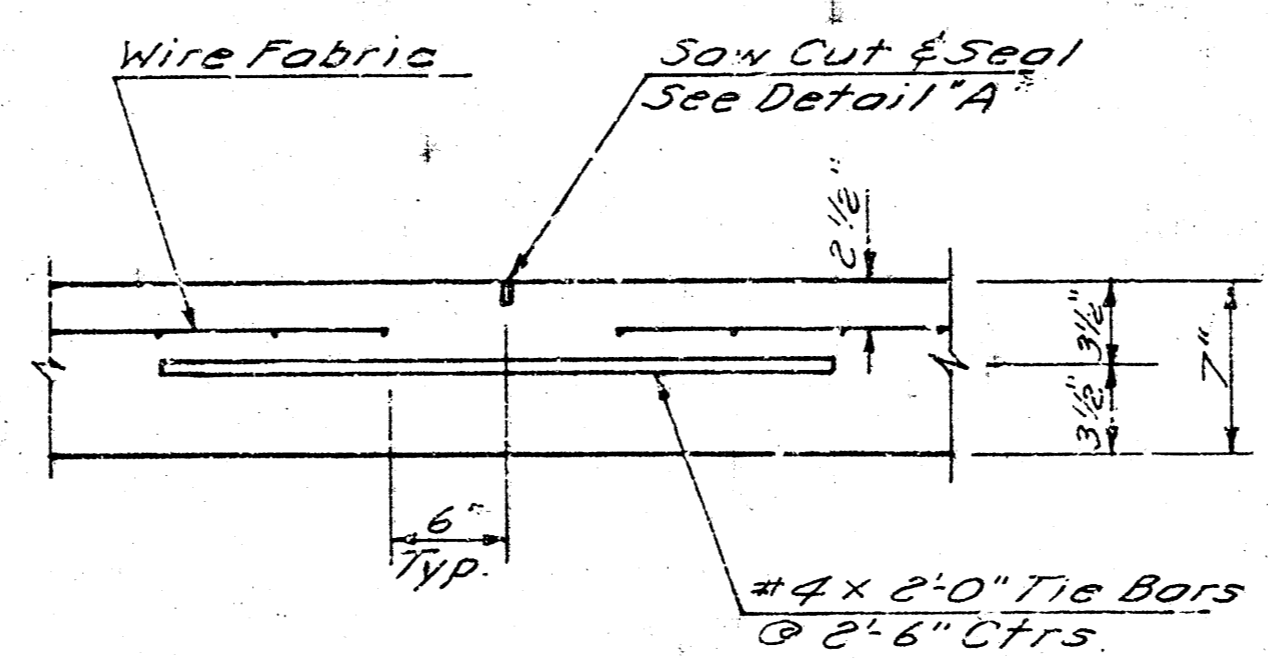
TYPICAL PAVEMENT SECTION



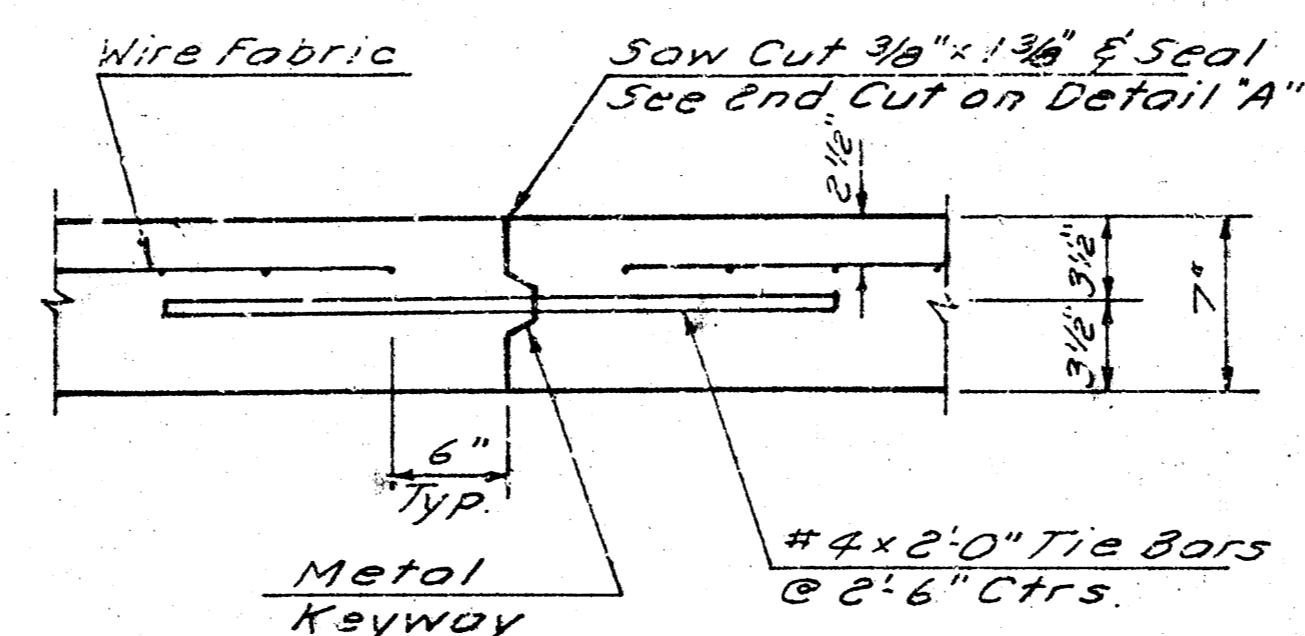
DETAIL "A"



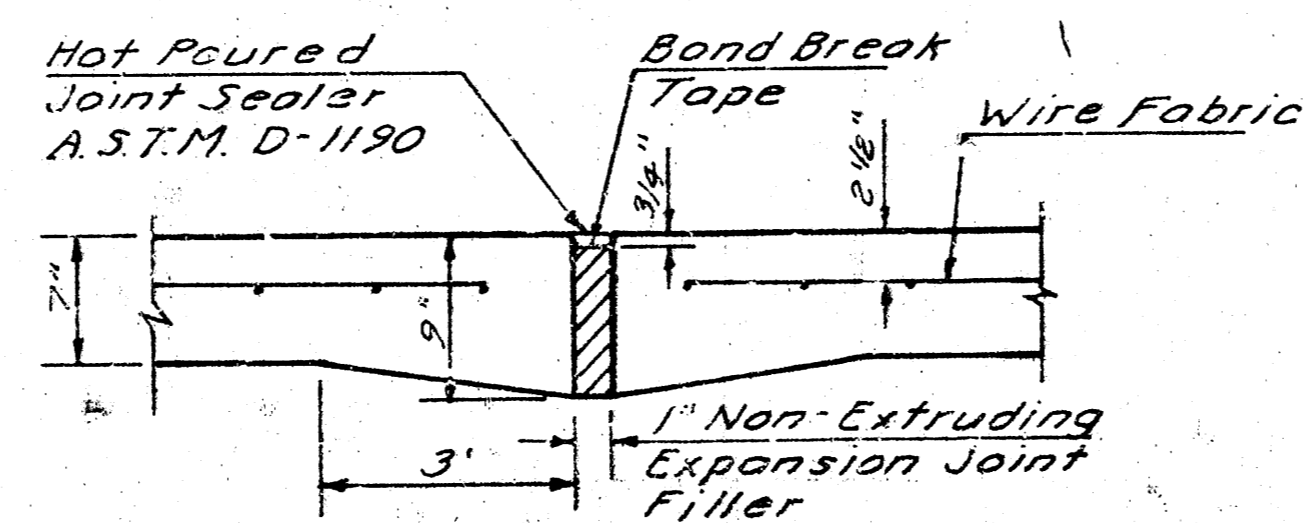
KEYWAY DETAIL



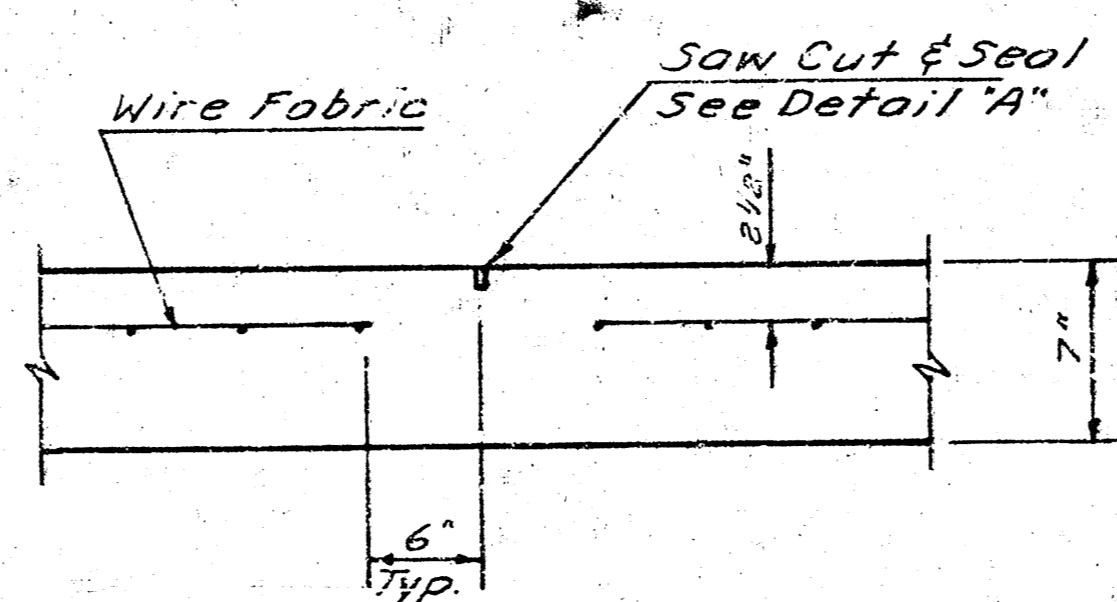
LONGITUDINAL CONSTRUCTION JOINT



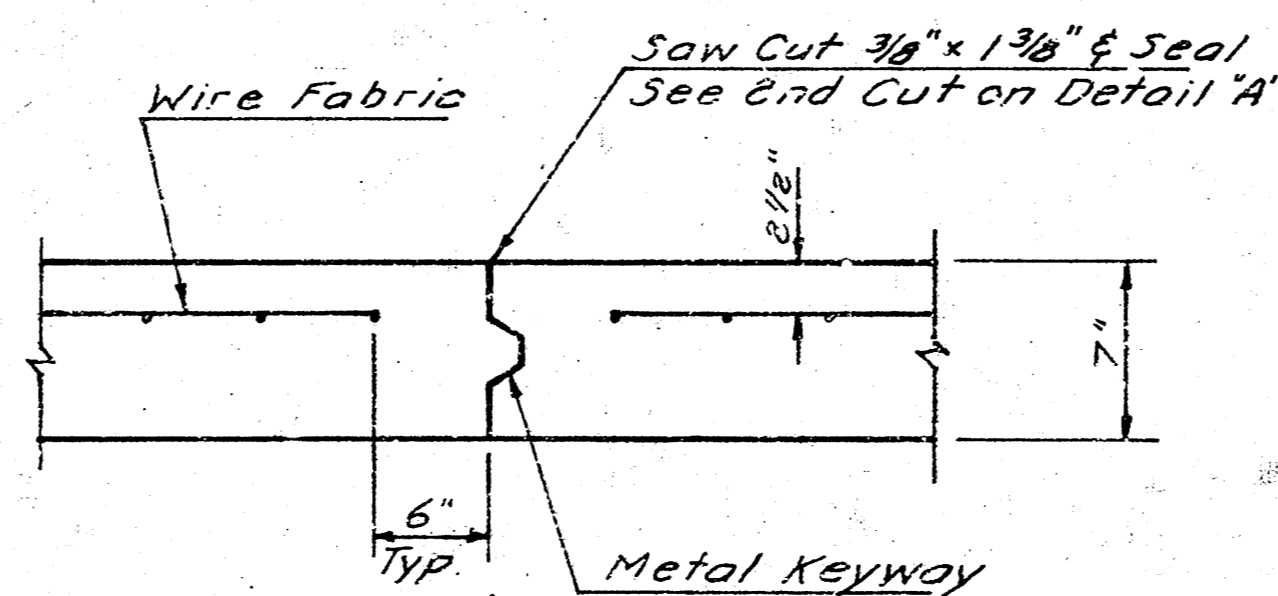
OPTIONAL LONGITUDINAL CONSTRUCTION JOINT



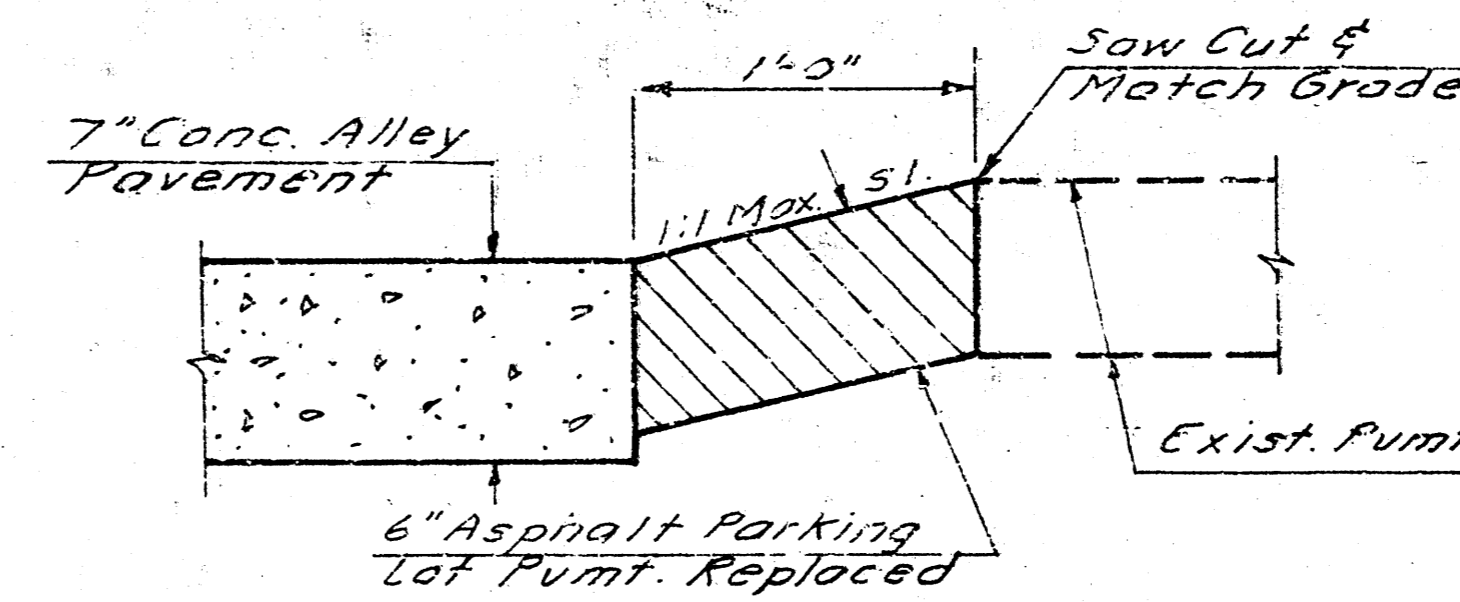
EXPANSION JOINT



CONTRACTION JOINT



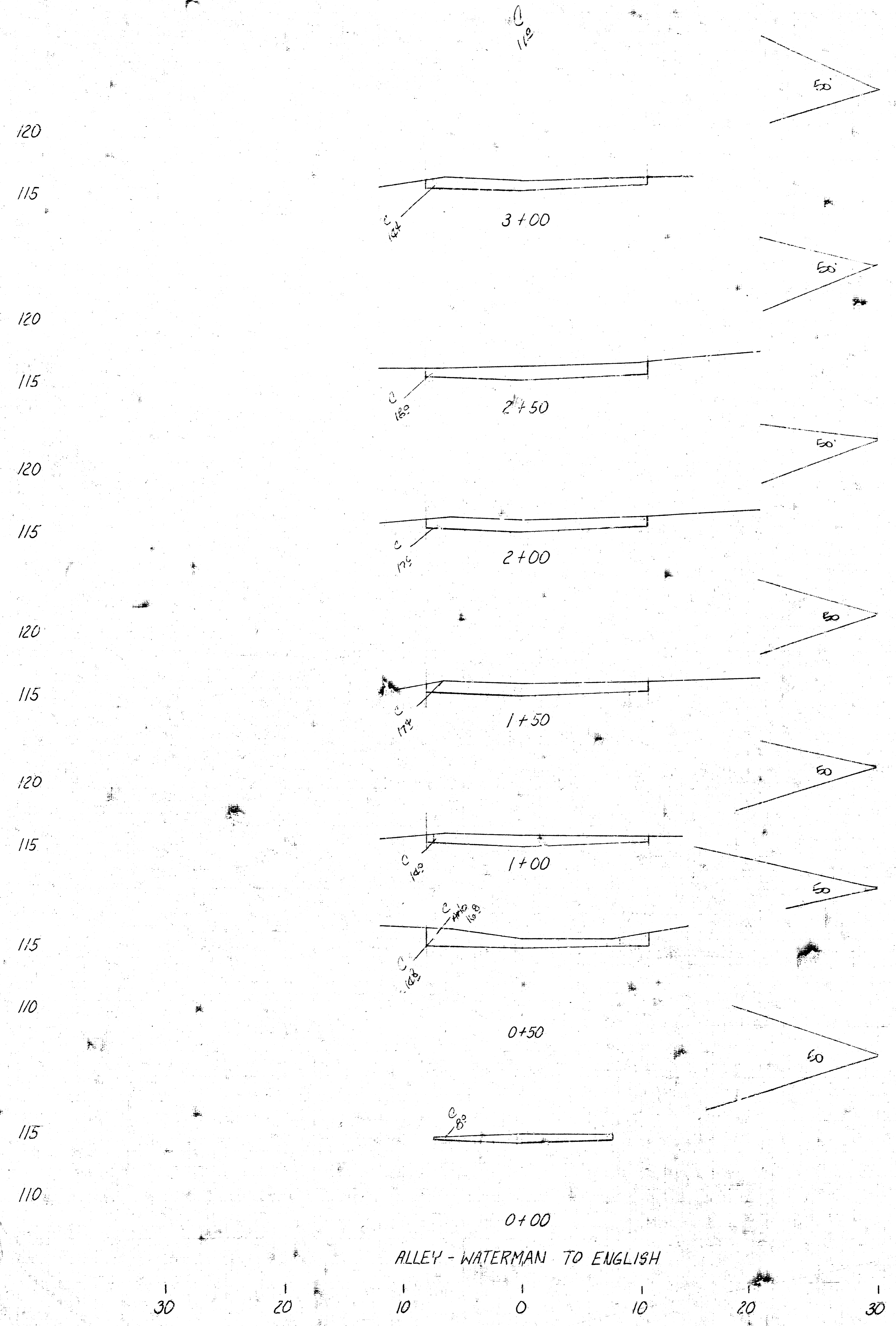
OPTIONAL CONTRACTION JOINT



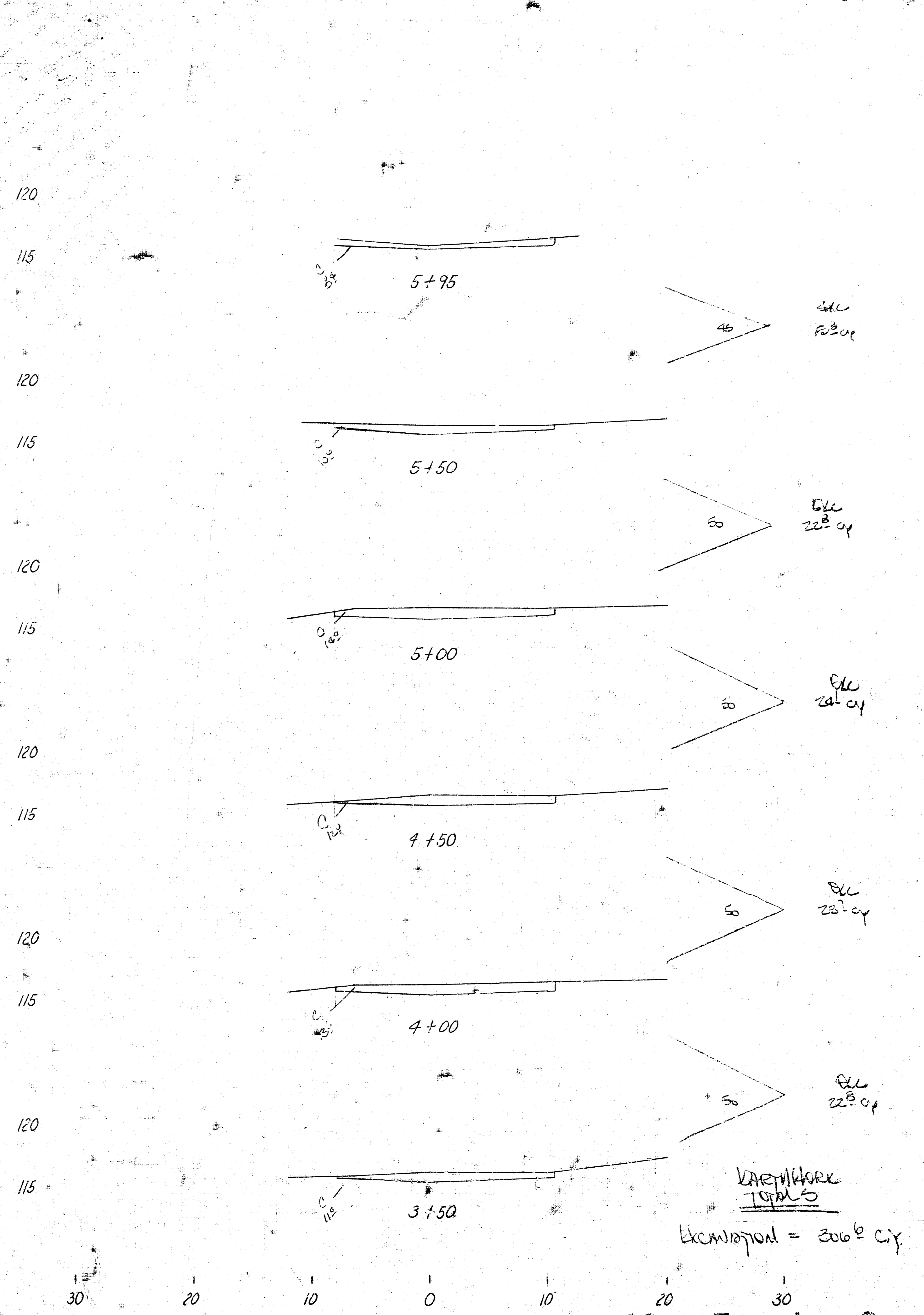
PARKING LOT REPLACEMENT DETAILS

MISC. PAVING DETAILS

| | | | | | |
|-------------------------|-----------|-----------------------|--------|----------|--------------|
| BAUGHMAN COMPANY, P.A. | | | | Sheet: | 3 |
| SURVEYING & ENGINEERING | | | | Scale: | 4 |
| 316-222-7271 | 315 ELLIS | WICHITA, KANSAS 67211 | | Project: | 7-201 |
| Design: | Drawn: | Appr'd: | Check: | Scale: | 1/8" = 1'-0" |



ALLEY - WATERMAN TO ENGLISH



EARTHWORK TOTALS
 Excavation = 306⁰ cy