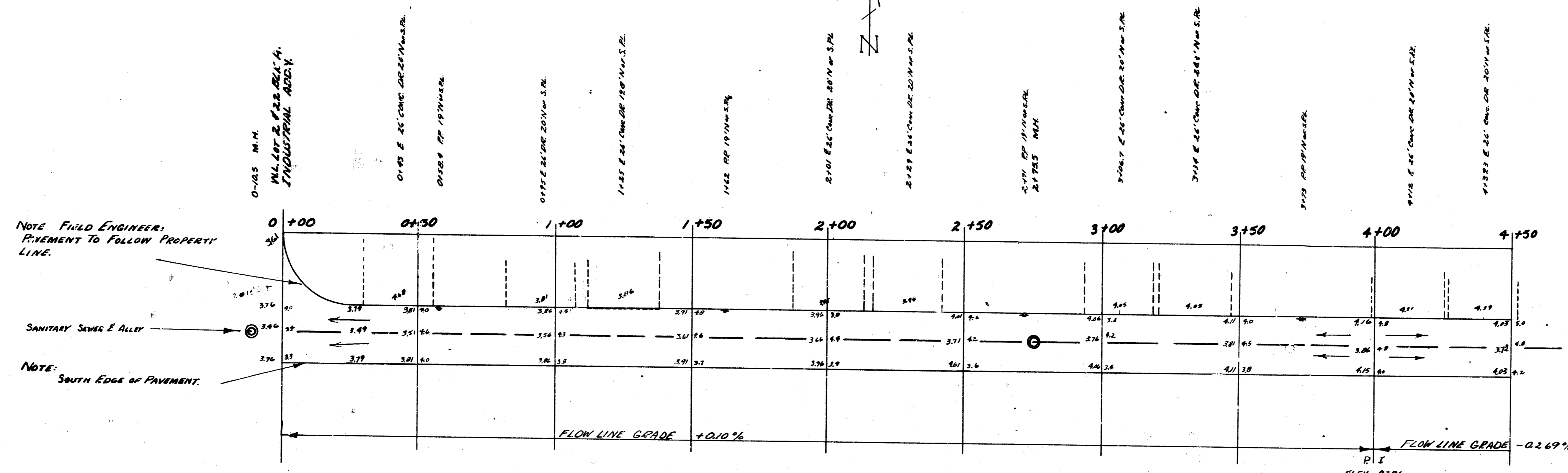


BM 95.93 60° SPIKE E.S. P. PILE SE COR NORTHERN & HYDRAULIC
 BM 75.07 60° SPIKE W.S. R.R. R/WY FENCE POST WASSALL & W.L. AT SE R.R. WY



NOTE FIELD ENGINEER:
 PAVEMENT TO FOLLOW PROPERTY
 LINE.

SANITARY SEWER & ALLEY

NOTE:
 SOUTH EDGE OF PAVEMENT.

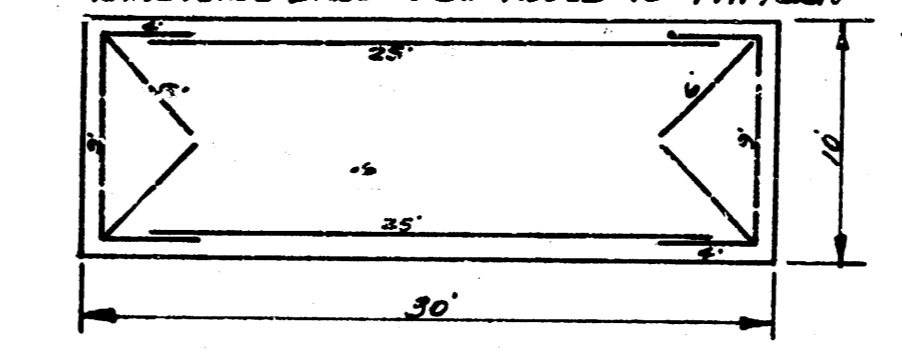
FLOW LINE GRADE +0.10%

FLOW LINE GRADE -0.269%

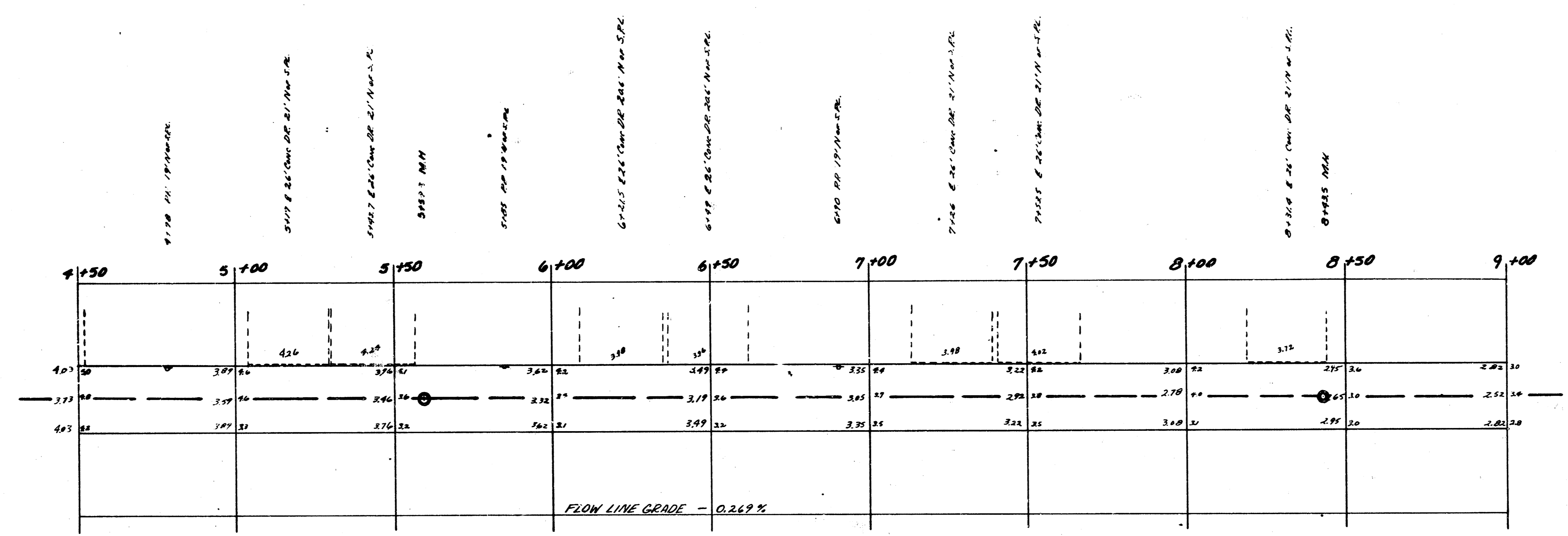
P.I.
 ELEV 38.06
 No K.C.

1
 3

STEEL PATTERN
 4" TRANSVERSE LAGS TO BE NEEDED TO PATTERN - 10" TO 15" TO 5" SOUTH SIDE ONLY.



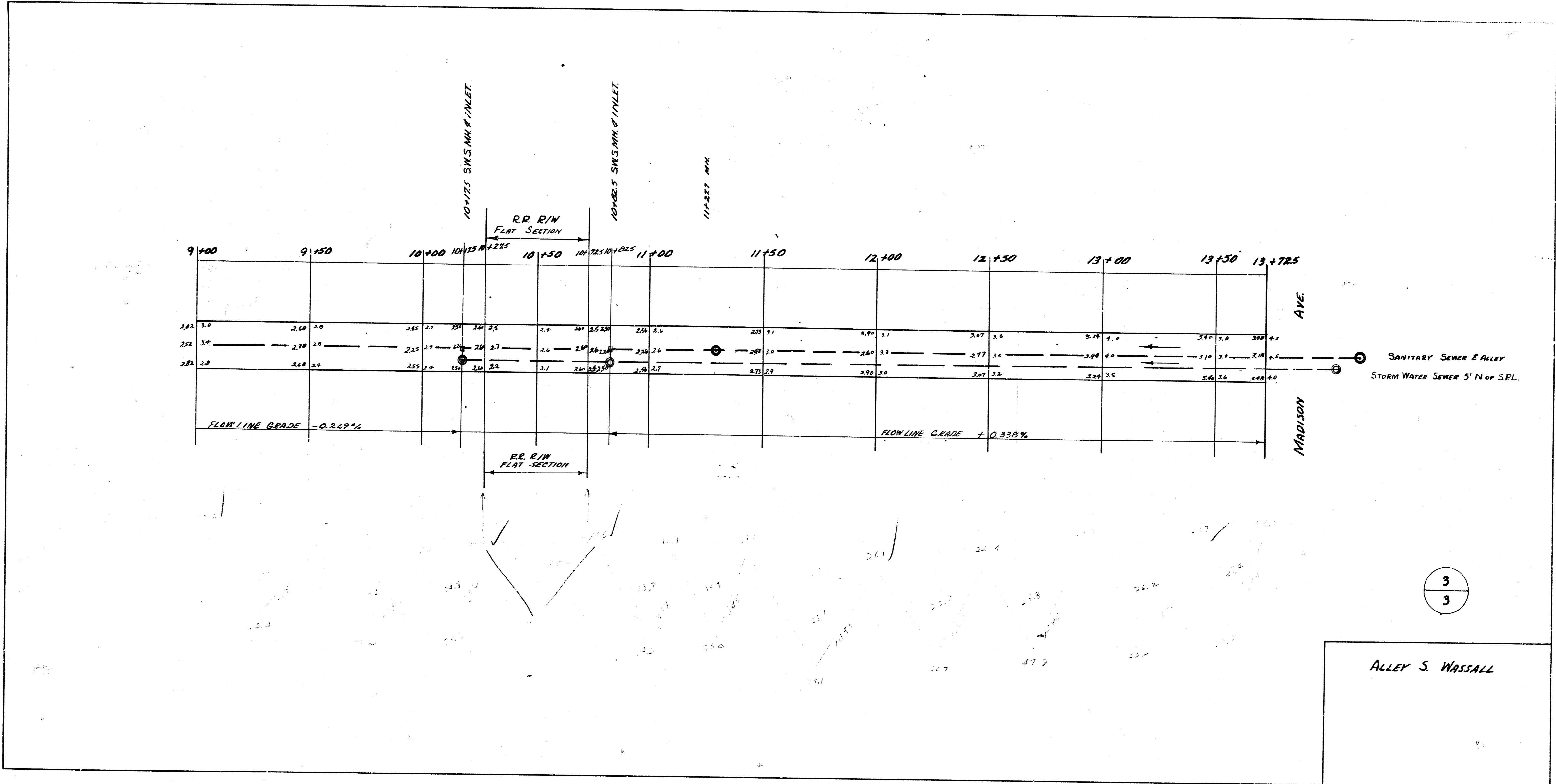
ALLEY SOUTH OF WASSALL
 W.L. LOT 2 & 22 BLK. A. INDUSTRIAL ADDON
 To W.L. MADISON
 7" CONC. - 20'
 CITY OF WICHITA KANSAS
 L.K. WHITE CITY ENGINEER
 JULY 1952 PROJ. No. C-12-4



2
3

ALLEY S. WASSALL

14-6



3
3

ALLEY S. WASSALL