

PLANS FOR

ALLEY IMPROVEMENTS BETWEEN MAIN AND MARKET
FROM 273.04' NORTH OF CENTERLINE GILBERT TO INDIANAPOLIS

PROJ. NO. 472-82361

INDEX NO. 762054

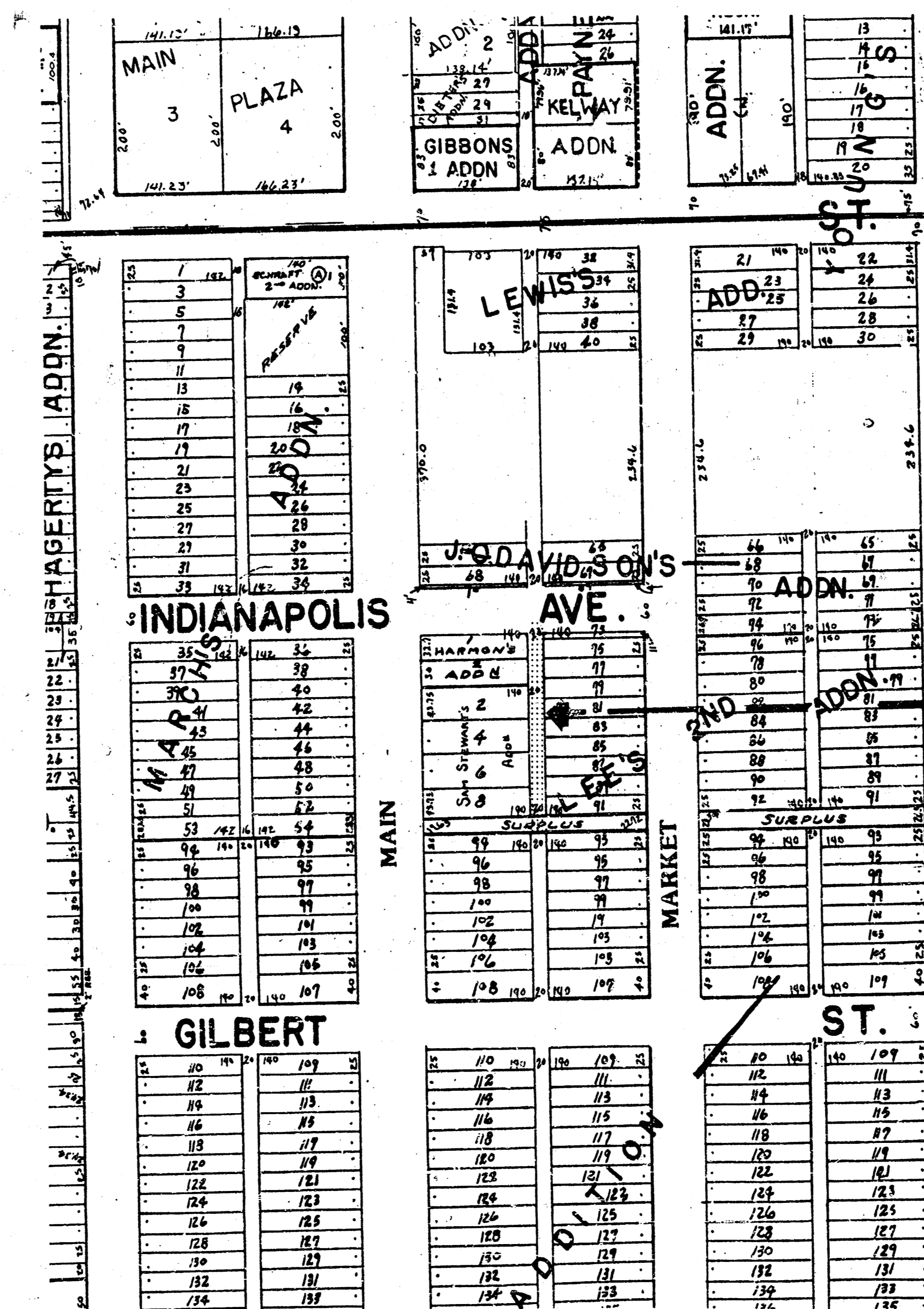
CITY OF WICHITA, KANSAS

M. E. LINDEBAK - CITY ENGINEER

GENERAL NOTES

- The contractor is solely responsible to notify and to make any necessary arrangements with utility companies for any needed adjustments of utility facilities prior to start of work.
- Contractor will be required to provide as minimum advance notice of forty-eight (48) hours to utility companies prior to starting any excavation as follows:

Kansas One Call	687-2470
Southwestern Bell Telephone Company	1-316-571-2611
Cablevision	262-4270 or 263-2061
KPL Gas Service	263-7511
Kansas Gas & Electric	264-1141
City of Wichita Water Department	268-4908
City of Wichita Sewer Department	268-4071
ARKLA Gas Company	942-8350 or 263-8161
- Utility service lines, poles, valve boxes, meters, and etc. are to be adjusted as necessary by others prior to construction unless the plans specifically call for their adjustment by the contractor or unless the plans specifically identify a utility to be adjusted by its owner during construction. Existing utilities and their location, as shown on the plans, represent the best information obtainable for design. The contractor will be required to work around existing utilities within the right-of-way which do not conflict with proposed construction.
- A saw cut of at least one-half the depth of existing surface courses or one-fourth the depth of the existing total pavement thickness shall be provided where proposed abuts an existing surface course or pavement removal. Sawed joint to facilitate removal within three (3) feet of existing joints will not be permitted and for such instances the limits of removal shall extend to the existing joint. Such saw cuts will not be paid for directly and this cost shall be considered as subsidiary to the removal of the surface or pavement.
- Rubble Removal - Rubble from the removal of miscellaneous structures and excess excavation which is to be wasted shall be disposed of on sites to be provided by the Contractor. These sites shall be approved by the Engineer as to suitability, appearance and site location. Locations that, in the opinion of the Engineer will leave an unsightly appearance will not be approved. All disposal sites must be approved by the Kansas Department of Health and Environment. Material either stockpiled or disposed of in a flood plain would require a Kansas State Board of Agriculture permit. Any material dumped in waters of the United State, or wetlands is subject to US Corps of Engineers permitting regulations. Any material buried or stockpiled beyond approved construction limits would require additional archaeological investigations unless buried in a previously approved borrow location. The cost of disposing of rubble from the removal of miscellaneous structures and excess excavation, including loading and hauling shall be subsidiary to the other bid items.
- The contractor shall be responsible for preserving property irons. The contractor will be required to re-establish any property irons which are damaged or destroyed by his construction operations. Such irons shall be re-established by a licensed land surveyor or a licensed professional engineer in accordance with state laws.
- Limits of earthwork shall match existing ground elevations at the right-of-way line unless otherwise noted on the plans. Where the new finished grade elevations do not match the existing ground elevations, the earthwork shall extend one foot beyond the right-of-way line and then sloped up or down using permissible slopes to match the existing ground surface.
- Driveway widths and locations shown on the plan are tentative. Contractor will be required to obtain properly executed driveway request form signed by property owner or his authorized representative verifying such driveway widths and locations. Such forms shall be submitted to the engineer for his review and approval.
- The contractor shall give all property owners and/or tenants of developed property abutting the project limits a minimum of ten (10) days advance notice prior to start of construction.
- Any fence removed for construction shall be repaired in a condition equal to, or better than original, at no additional cost to the owner. This cost shall be considered as subsidiary to other bid items.
- The contractor must examine the construction site prior to bidding and be satisfied as to the work shown for completion. After bids have been received, the contractor shall not assert that there was a misunderstanding of the quantities of work or of the nature of the work to be completed.
- All construction and materials, unless otherwise noted, to comply with City of Wichita specifications and standards.
- The contractor shall be responsible for the acquisition of any additional right-of-ways or easements necessary to complete the work. This cost shall be considered as subsidiary to other bid items.



INDEX OF SHEETS

- SHEET 1 - TITLE SHEET
 SHEET 2 - PLAN SHEET
 SHEET 3 - MH ADJUSTMENT DETAIL
 SHEET 4 - EARTHWORK SECTION



1"=150'

SEWER NOTE:

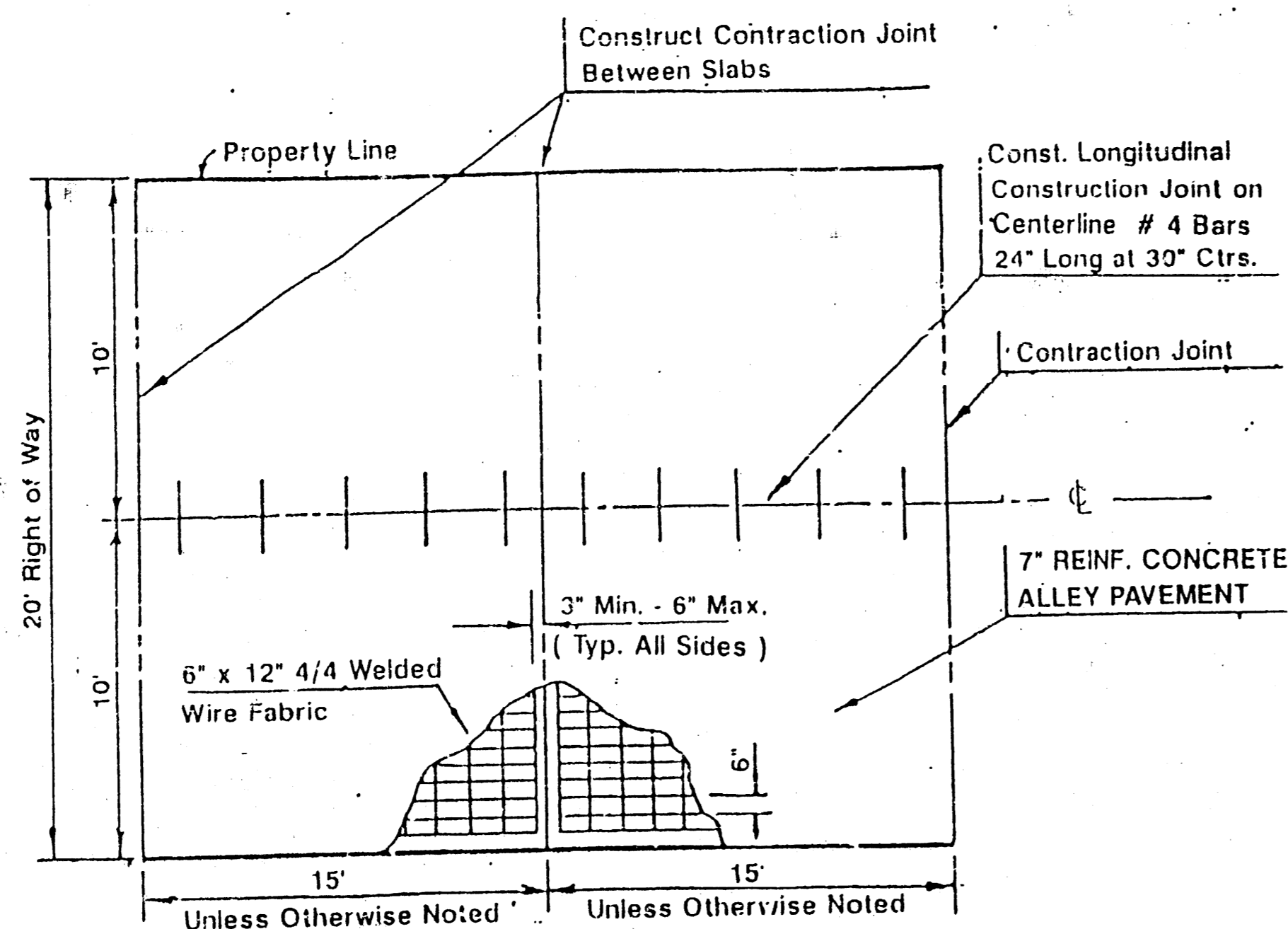
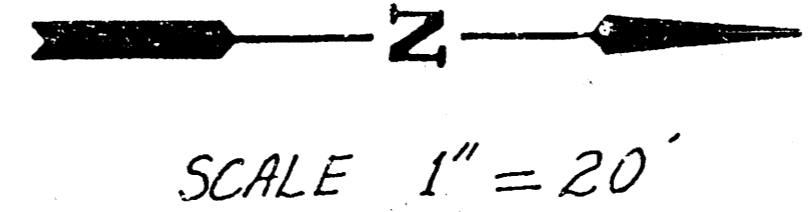
The City of Wichita's Sewer Maintenance Division of the Department of Water and Water Pollution Control has televised sewers within the limits of the project and have found no defects requiring repair. The Division shall be notified and afforded the opportunity to televise sewer lines after subgrade work has been completed and prior to pavement construction to determine if such sewer lines have been damaged by the Contractor's operations. Damaged sewer lines will be repaired by the Contractor, as directed by the Engineer, at the Contractor's expense. Television logs are available for inspection by the Contractor during normal office hours at the Sewer Maintenance Division's office at City Hall.

MAIN ST.

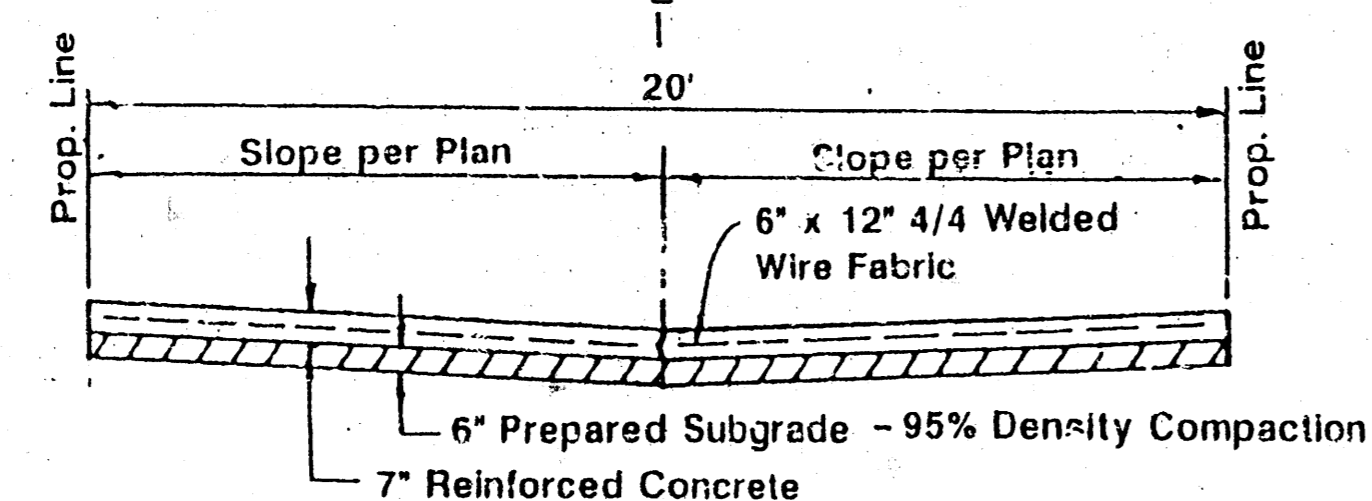
B.M. 107.57 "X" CTR WK EAST ON S. SIDE INDIANAPOLICE @ E.L. ALLEY BET MAIN & MARKET

GILBERT ST.

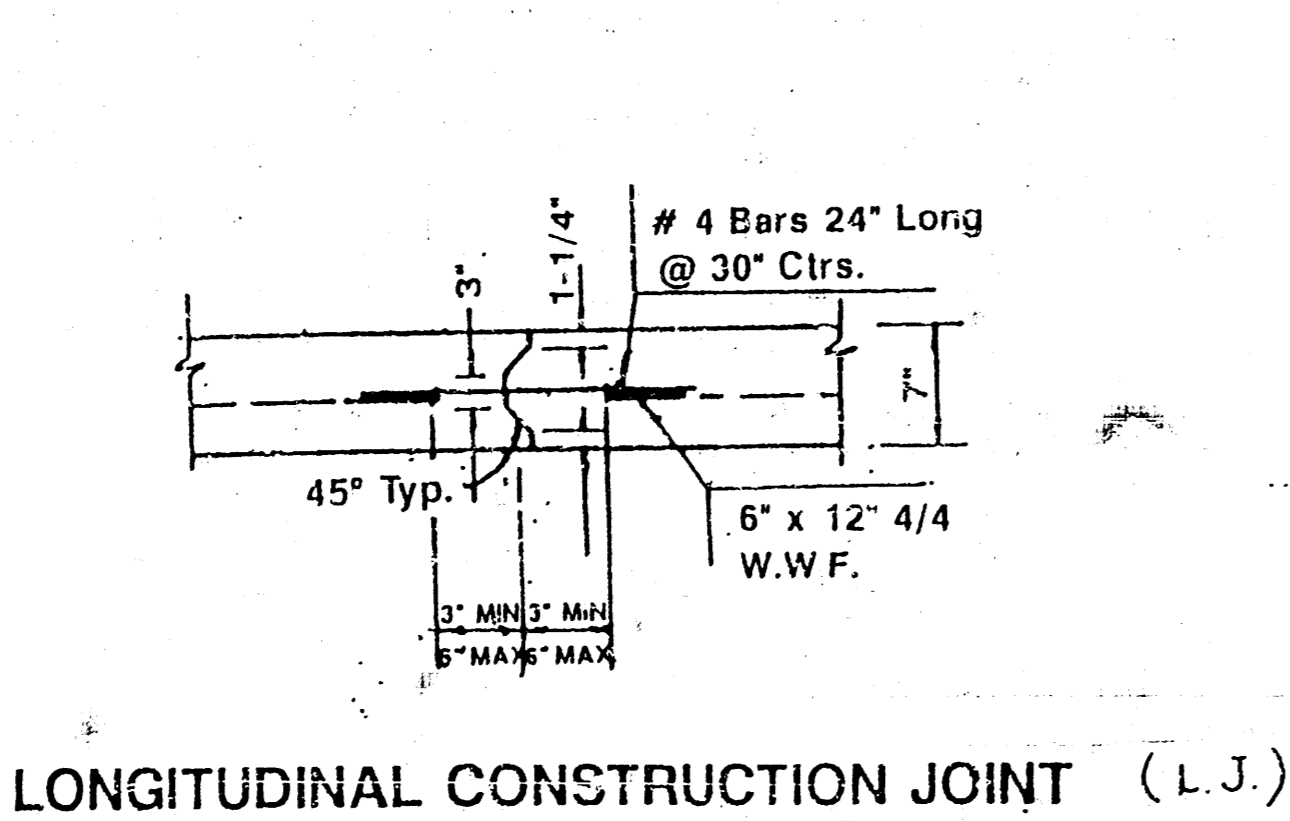
INDIANAPOLIS ST.



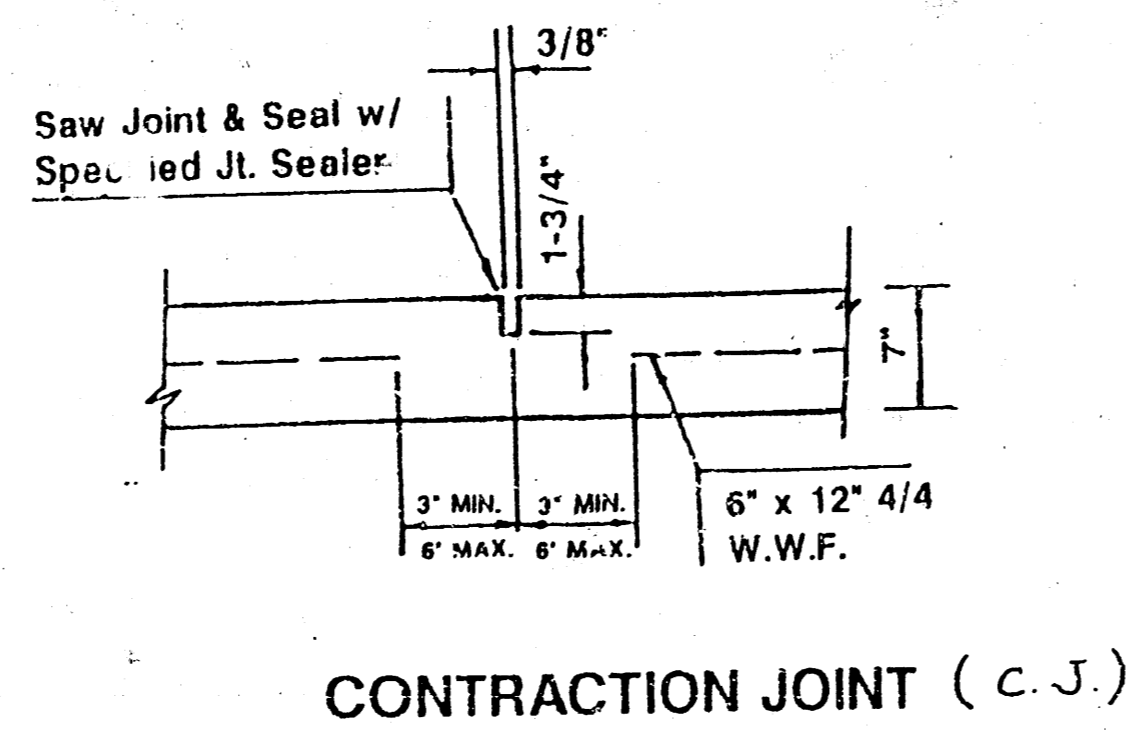
SLAB REINFORCEMENT DETAIL



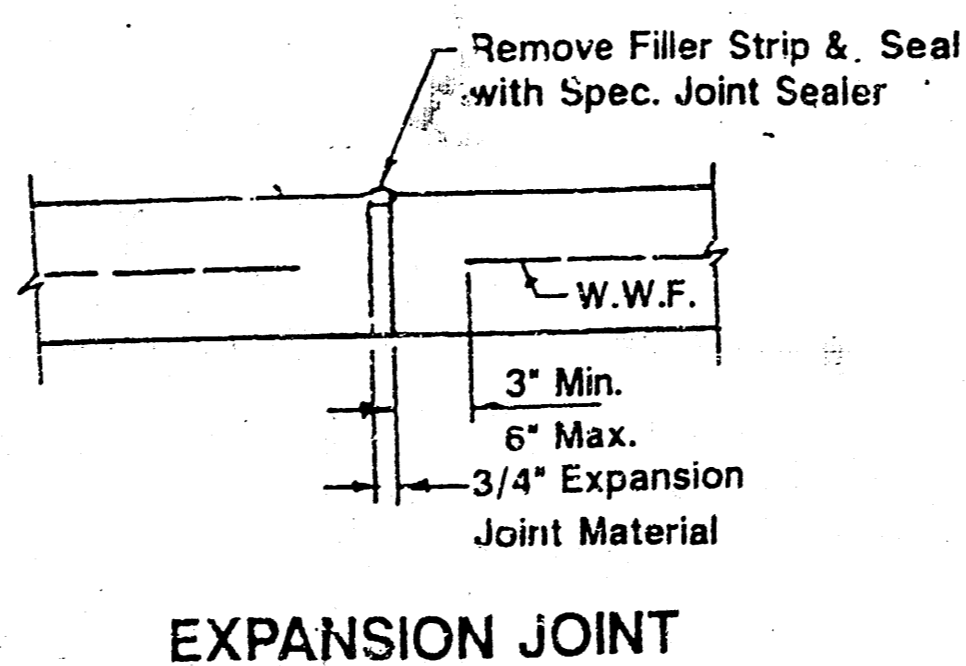
TYPICAL PAVEMENT SECTION



LONGITUDINAL CONSTRUCTION JOINT (L.J.)



CONTRACTION JOINT (C.J.)



EXPANSION JOINT

MARKET ST.

END CONSTRUCTION

BEGIN CONSTRUCTION

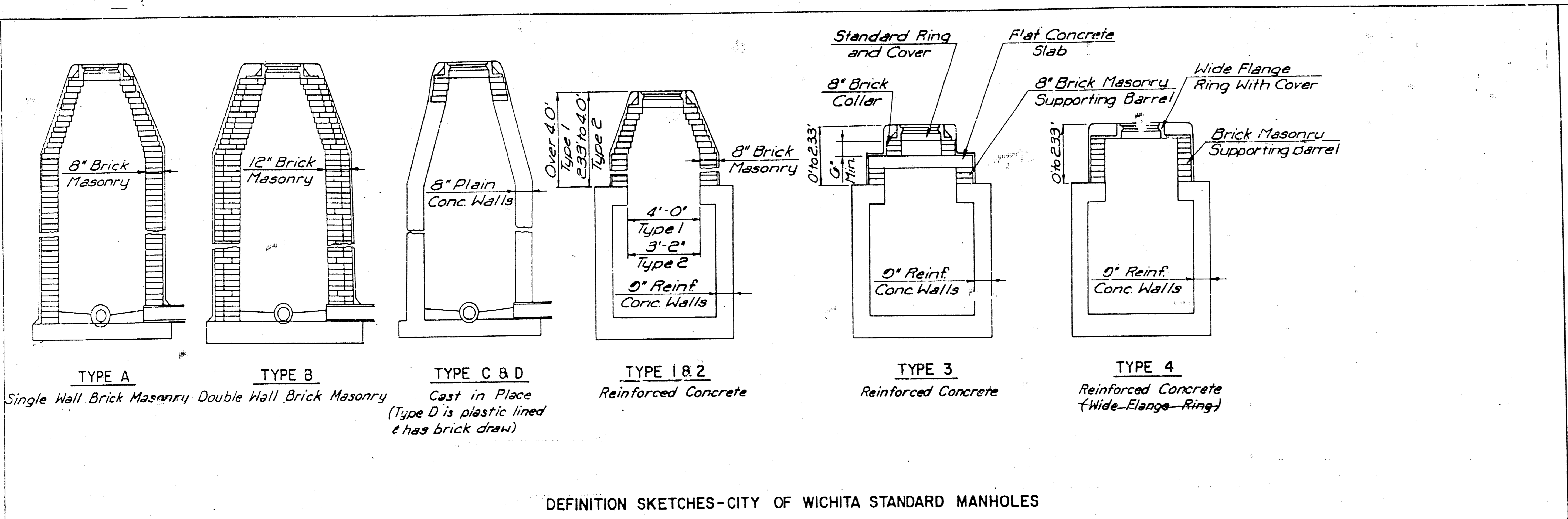
SAW CUT, REMOVE AND REPLACE WITH 1" THICKER THAN EXISTING ASPH. COST SUBSIDIARY TO OTHER BID ITEMS.

SECTION "A-A"
Sta 0+30 to 1+30
Scale 1" = 1'

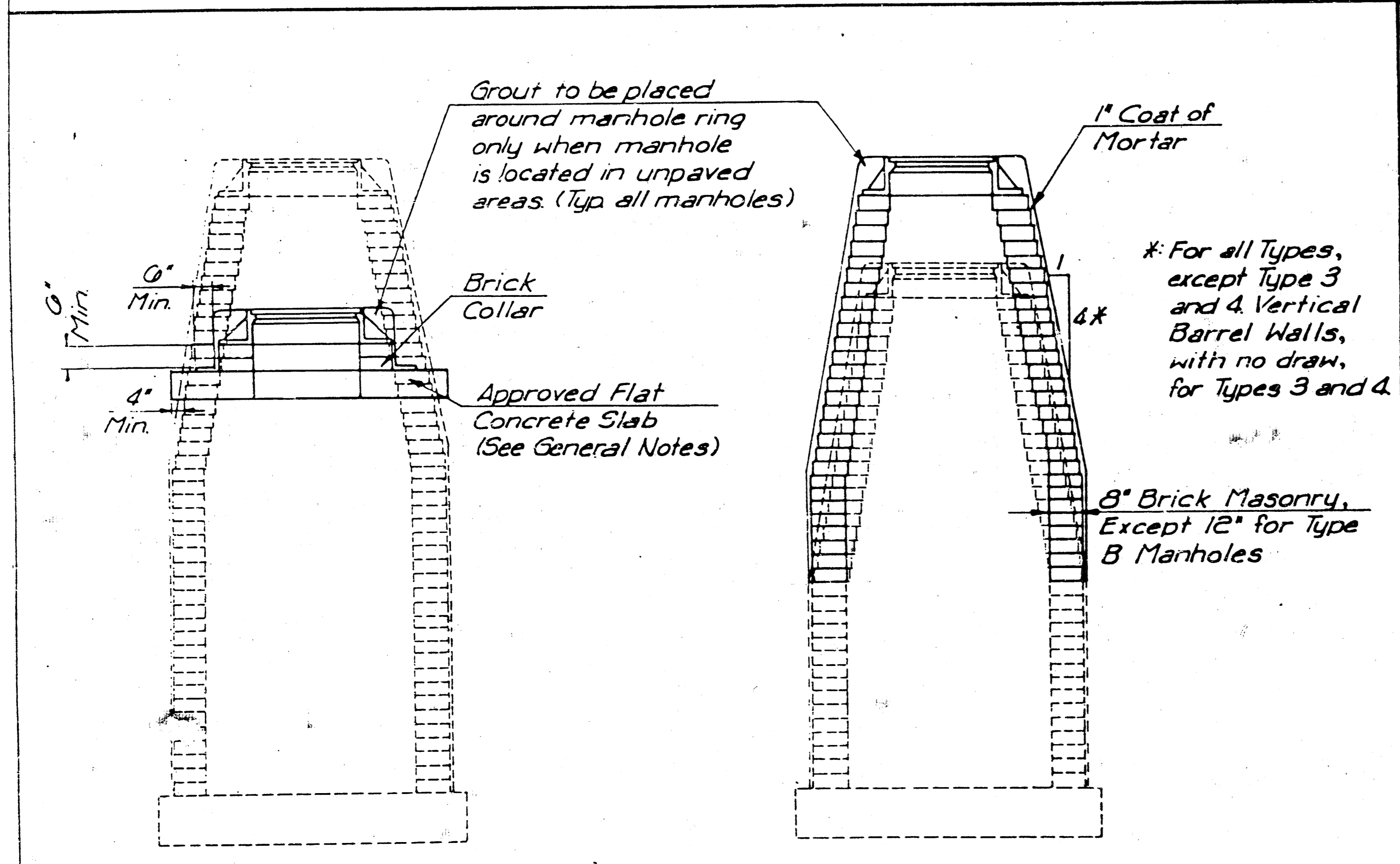
ALLEY IMPROVEMENTS BET. MAIN AND MARKET FROM 273' NO. OF CL GILBERT TO INDIANAPOLIS

SHEET 2 of 4		
SCALE:	APPROVED BY B.R.	DRAWN BY B.R.
DATE:		
PROJ. NO. 472-82361		
INDEX NO. 762054	DRAWING NUMBER	





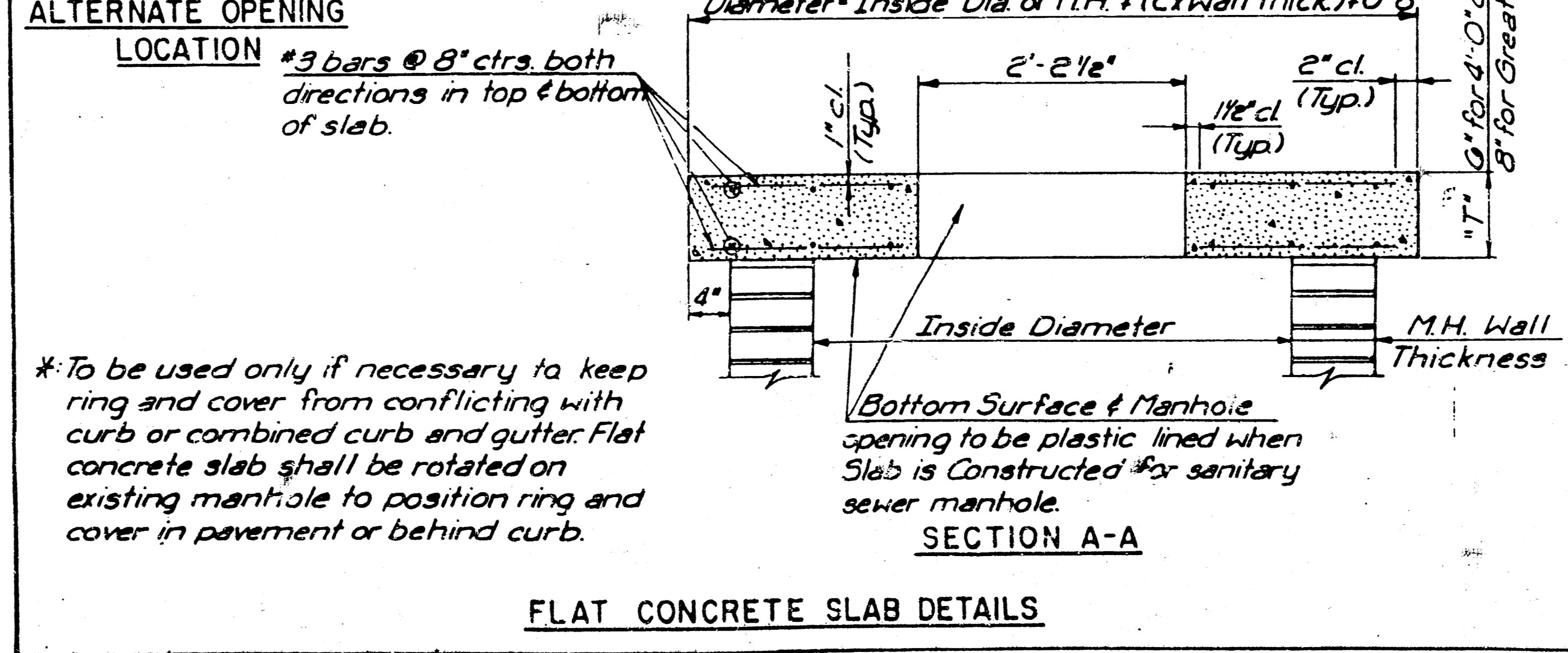
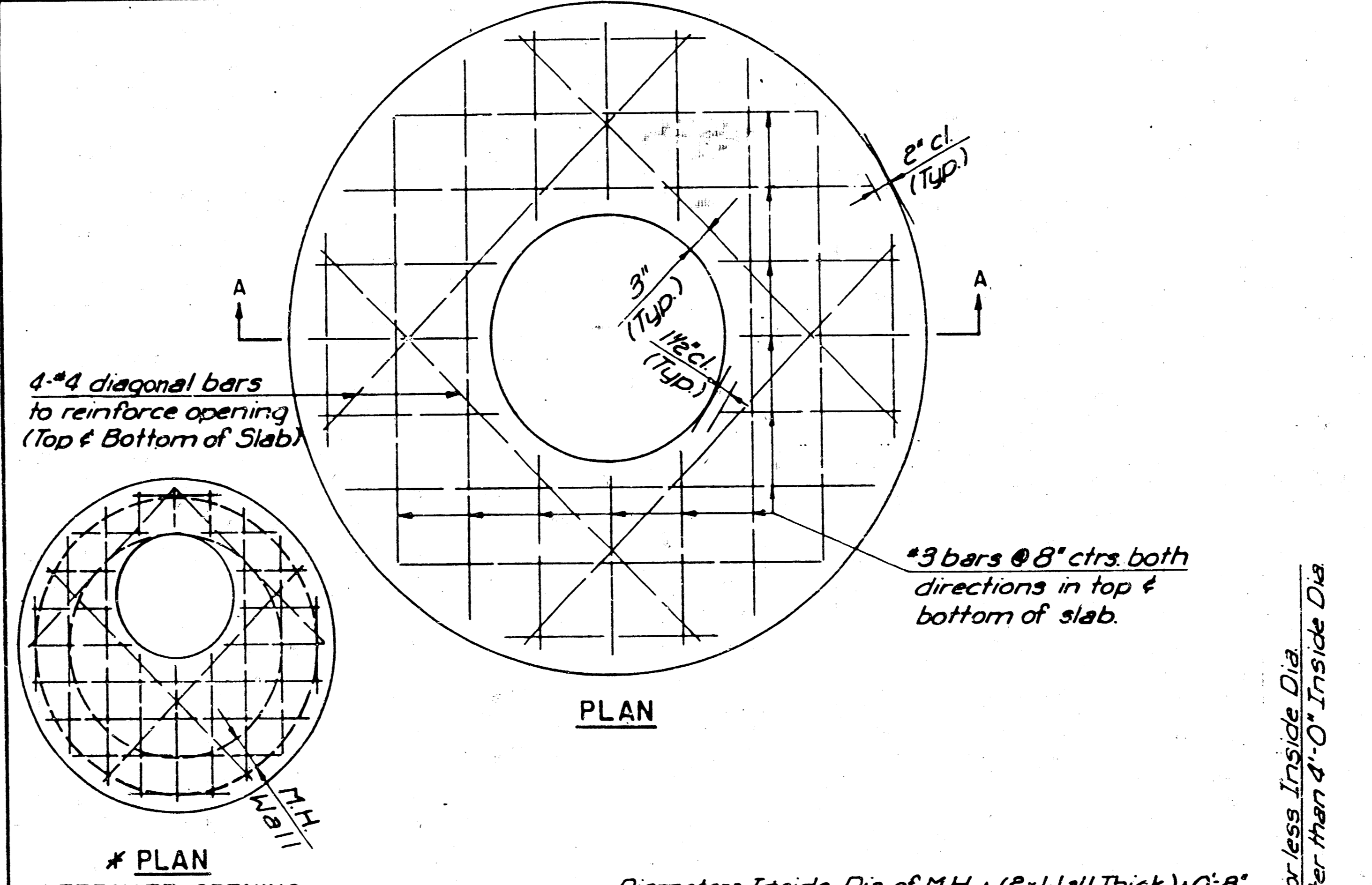
DEFINITION SKETCHES-CITY OF WICHITA STANDARD MANHOLES



THE APPROPRIATE PORTIONS OF THE DRAW AND BARREL OF TYPE A, B, C, D, 1 AND 2 MANHOLES SHALL BE REMOVED. A FLAT CONCRETE SLAB SHALL BE PLACED AND THE RING AND COVER RESET. ALL WORK AND MATERIALS SHALL CONFORM TO THE DETAILS SHOWN AND THE GENERAL NOTES.

COURSES OF BRICK BARREL SUPPORTING THE WIDE FLANGE RING FOR TYPE 4 MANHOLES AND FLAT CONCRETE SLAB FOR TYPE 3 MANHOLES SHALL BE REMOVED AS NECESSARY PRIOR TO RESETTING THE WIDE FLANGE RING OR FLAT CONCRETE SLAB AND RING. ALL WORK AND MATERIALS SHALL CONFORM TO THE DETAILS SHOWN AND THE GENERAL NOTES.

THE ENTIRE DRAW OF TYPES A, B, C, D, 1 AND 2 MANHOLES SHALL BE REMOVED, THE MANHOLE BARREL RAISED THE APPROPRIATE AMOUNT, A NEW DRAW CONSTRUCTED, AND THE RING AND COVER RESET. THE UPPER PORTION OF TYPE 3 MANHOLES SHALL BE REMOVED TO THE BOTTOM OF THE FLAT CONCRETE SLAB, THE BRICK MASONRY BARREL SUPPORTING THE SLAB SHALL BE RAISED THE APPROPRIATE AMOUNT, AND THE SLAB AND RING AND COVER RESET. THE WIDE FLANGE RING AND COVER OF TYPE 4 MANHOLES SHALL BE REMOVED, THE BRICK MASONRY BARREL SUPPORTING THE RING SHALL BE RAISED THE APPROPRIATE AMOUNT AND THE RING AND COVER RESET. ALL WORK REQUIRED FOR A GREATER THAN TWELVE INCH (12") UPWARD ADJUSTMENT OF ANY MANHOLE SHALL BE ACCOMPLISHED WITH BRICK MASONRY IN ACCORDANCE WITH THE DETAILS SHOWN AND THE GENERAL NOTES.



*To be used only if necessary to keep ring and cover from conflicting with curb or combined curb and gutter flat concrete slab shall be rotated on existing manhole to position ring and cover in pavement or behind curb.

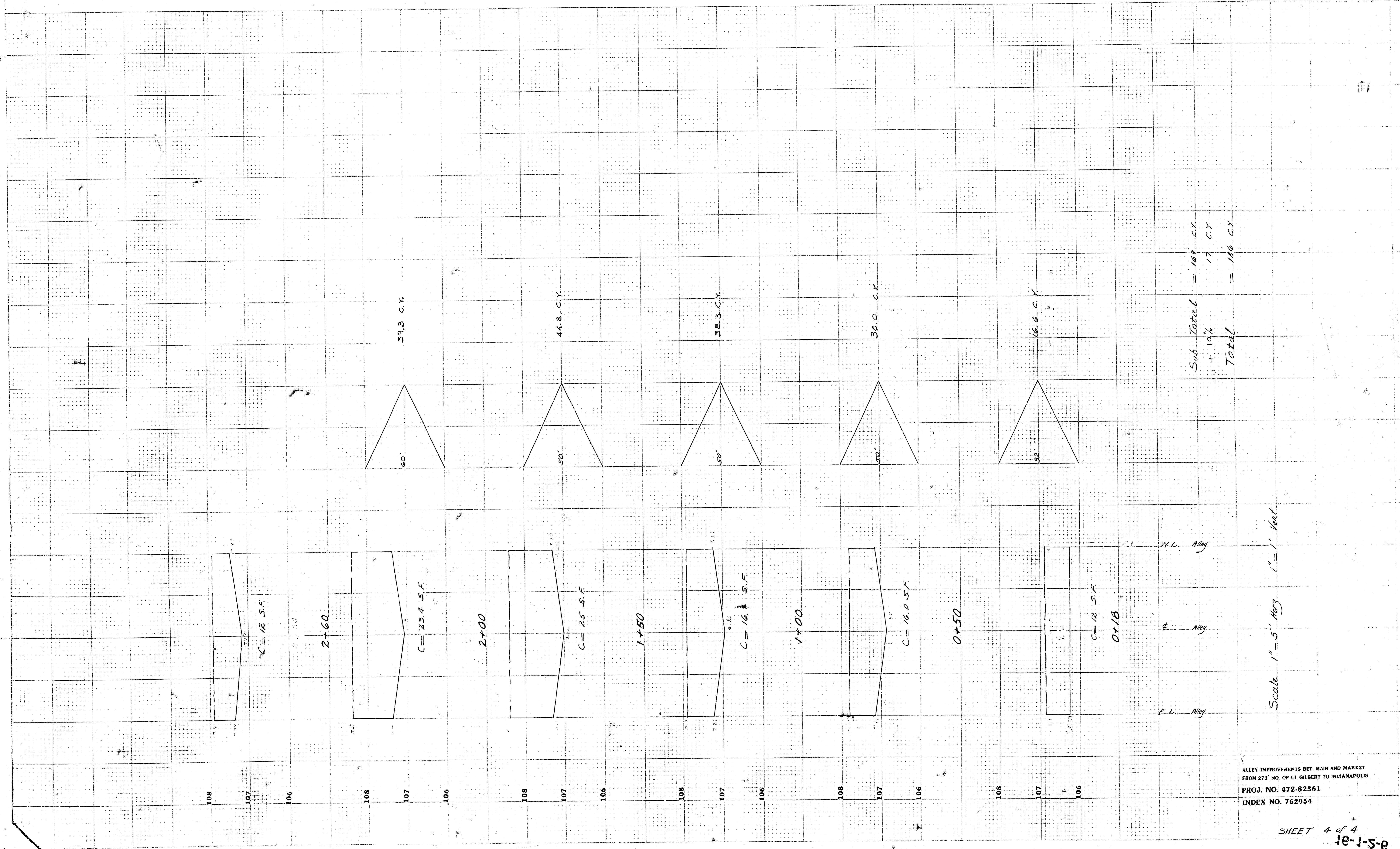
SHEET 3 of 4

ALLEY IMPROVEMENTS BET. MAIN AND MARKET
FROM 275' NO. OF CL GILBERT TO INDIANAPOLIS

MANHOLE ADJUSTMENT DETAILS
PROJ. NO. 472-82361
INDEX NO. 762054

CITY OF WICHITA, KANSAS
M. E. LINDEBAK - CITY ENGINEER

Designed by	Checked by
Drawn by	Date
	JOB No.



Sub-Total = 169 C.Y.
 + 10% = 17 C.Y.
 Total = 186 C.Y.

Scale 1" = 5' Horiz. 1" = 1' Vert.

ALLEY IMPROVEMENTS BET. MAIN AND MARKET
 FROM 273' NO. OF CL. GILBERT TO INDIANAPOLIS.
 PROJ. NO. 472-82361
 INDEX NO. 762054