

R.W. Linn
 City Engineer
 Wichita, Kansas

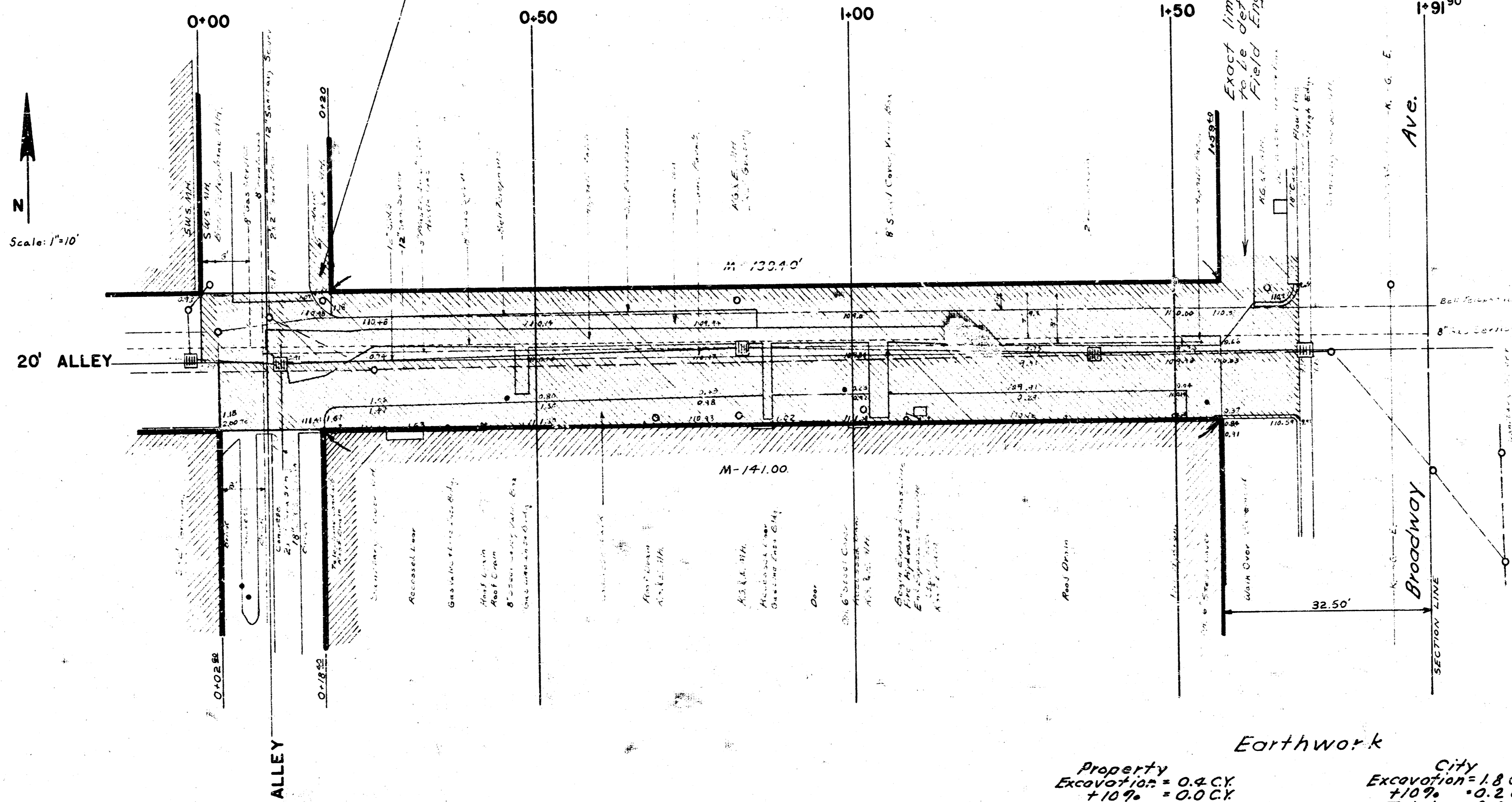
BM #1 112.93 12" Cut Conc. Retaining Wall On SW C. v. Broadway & First.
 BM #2 112.04 6" Cut Top Cb. SL. Alley 1/2 Blk North Of Douglas, 135' E. Of EL. Marked.

NOTE: FIELD ENGINEER IS TO TAKE NEW ORIGINAL CROSS-SECTIONS AFTER
 EXISTING PAVEMENT HAS BEEN REMOVED.

Remove existing walk and replace with 8" concrete pavement. Slope pavement to match alley pavement at N.L. of east-west alley.

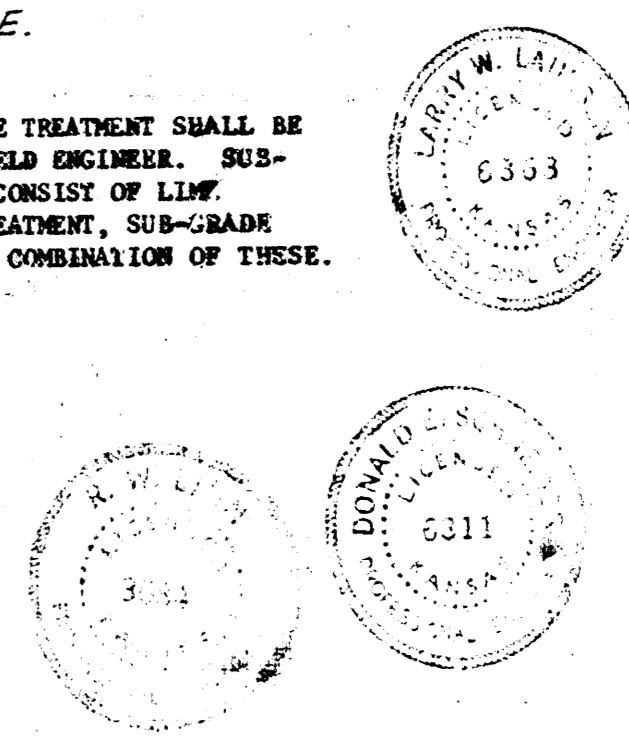
NOTE: THE REMOVAL OF ALL PAVEMENT, DRIVE, AND SIDEWALKS ON THIS PROJECT SHALL BE PRICED AND PAID FOR AS S.Y. OF PAVEMENT REMOVED.

Note: All Roof Drains Go Underground And Drain Directly Into Existing Storm Water Sewer.



Underground Utilities
 - - - - - Arkla Gas
 - - - - - Gas Service
 - - - - - Bell Telephone
 - - - - - Storm Water Sewer (SWS)
 - - - - - Sanitary Sewer
 - - - - - K.G. & E.

NOTE: THE TYPE OF SUB-GRADE TREATMENT SHALL BE DETERMINED BY THE FIELD ENGINEER. SUB-GRADE TREATMENT MAY CONSIST OF L.I.W. TREATMENT, CEMENT TREATMENT, SUB-GRADE MODIFICATION, OR ANY COMBINATION OF THESE.



Property		City	
Excavation	= 0.4 C.Y.	Excavation	= 1.8 C.Y.
+10%	= 0.0 C.Y.	+10%	= 0.2 C.Y.
Total	= 0.4 C.Y.	Total	= 2.0 C.Y.
Comp. Fill = 13.7 C.Y.		Comp. Fill = 0.0 C.Y.	
+10% = 1.8 C.Y.			
Total = 15.1 C.Y.			

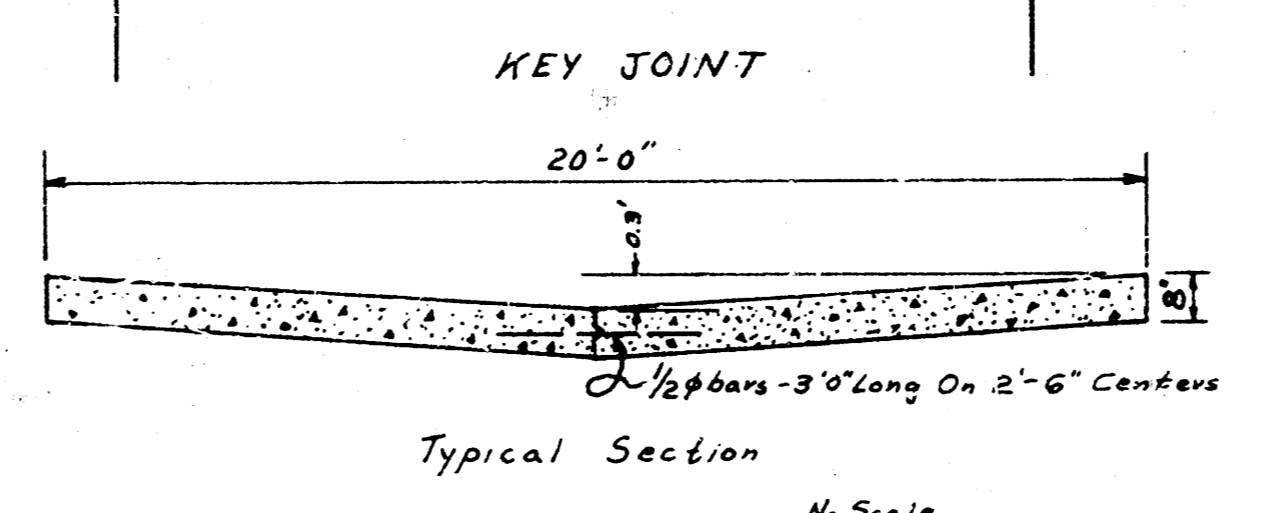
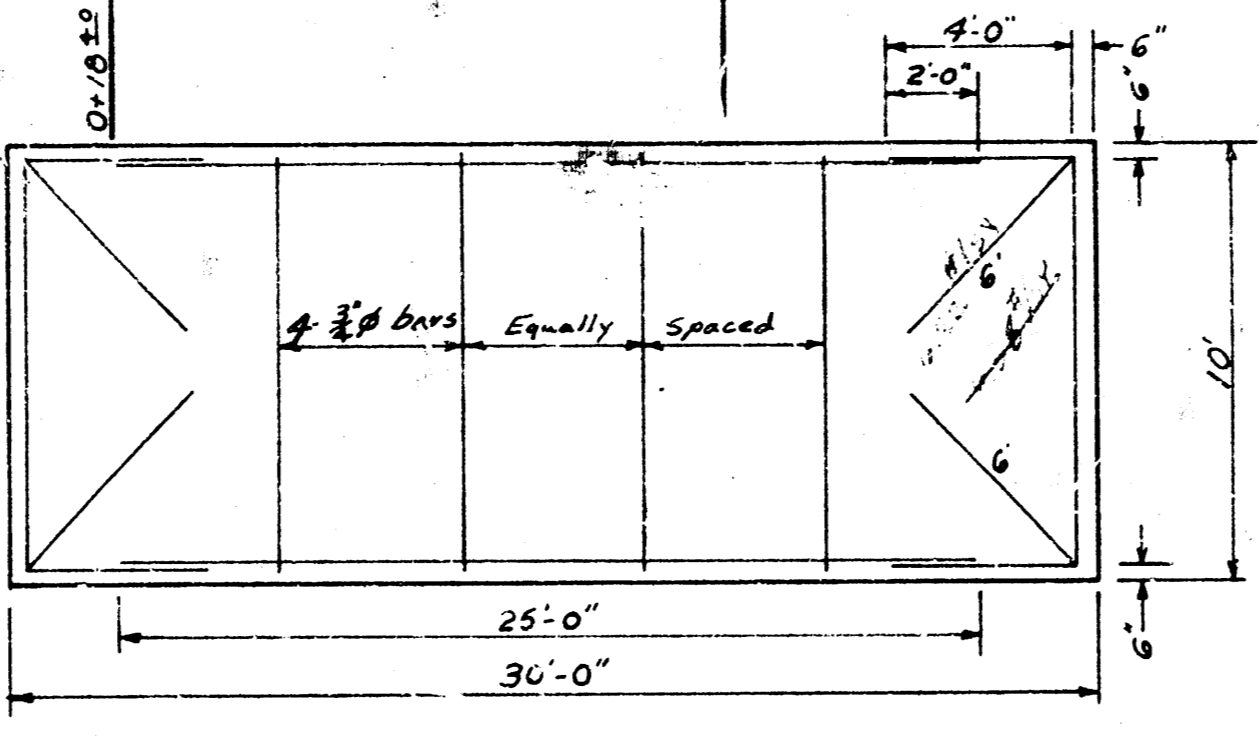
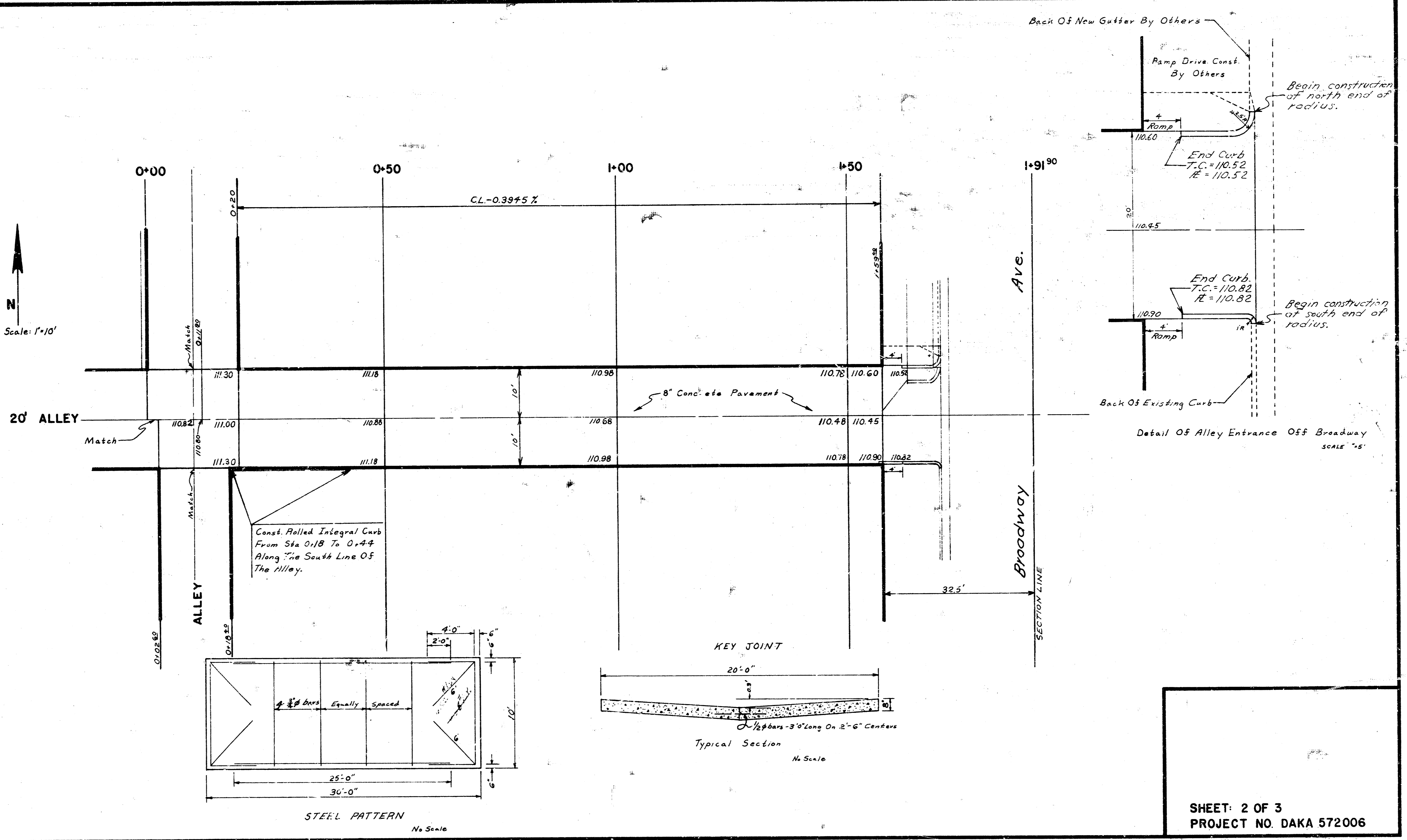
Note: See sheet No. 2 for paving details.

NOTE: THIS PROJECT SHALL BE COORDINATED WITH THE PROJECT FOR RECONSTRUCTION OF THE STORM SEWER AND SANITARY SEWER IN ALLEY NORTH OF BROADWAY.

ALLEY NORTH OF DOUGLAS FROM W.L. ALLEY WEST OF BROADWAY, TO W.L. BROADWAY. REPAVE 20' CONCRETE 8" CITY OF WICHITA, KANSAS
R.W. LINN CITY ENGINEER
 DATE: Sep. 1973
 SHEET: 1 OF 3
 PROJECT NO. DAKA 572006

Submitted by: E. H. H. H.
 Checked by: S. S. S. S.
 Date: 11/1/50

N
 Scale: 1"=10'



SHEET: 2 OF 3
 PROJECT NO. DAKA 572006