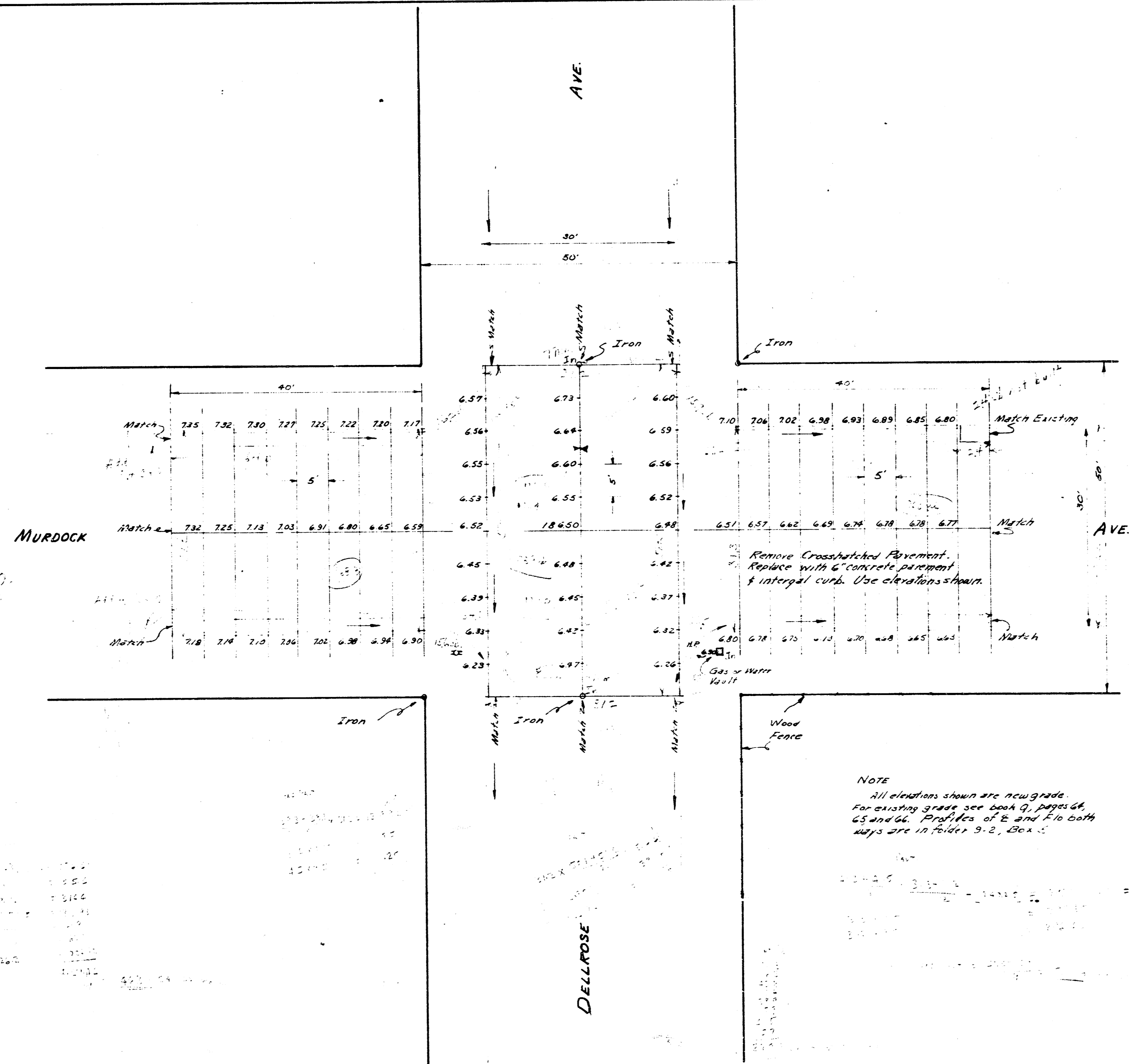


B.M. "X" in E and Cur. Ret. NE Cor. Oliver K. Murdock 18257

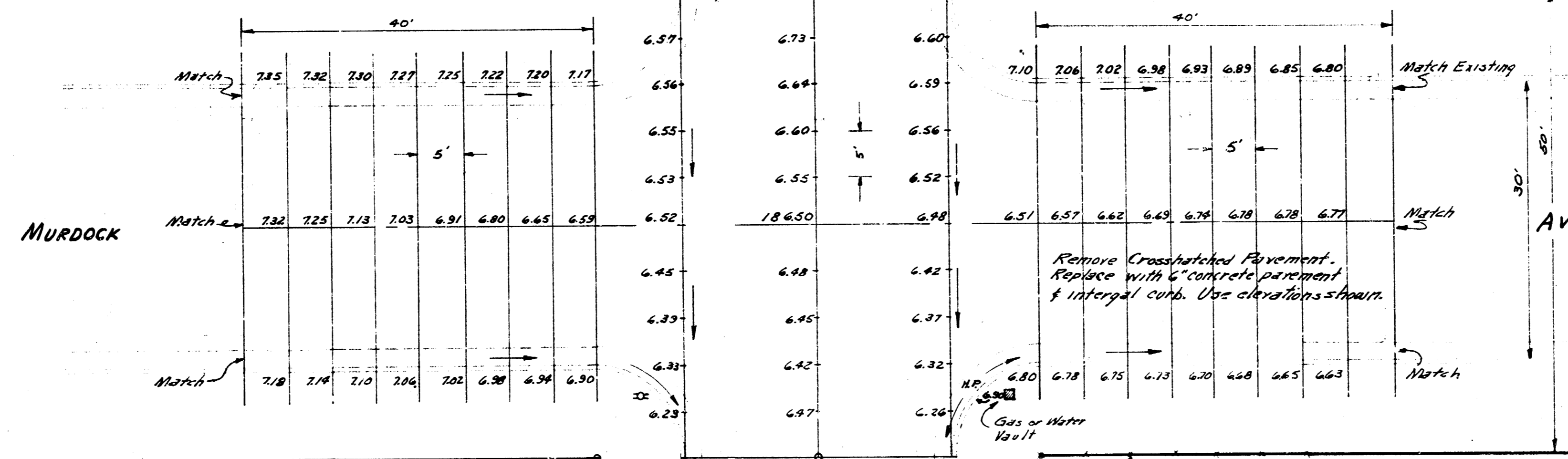


NOTE
All elevations shown are new grade.
For existing grade see book 9, pages 46,
45 and 44. Profiles of E and F, both
maps are in folder 3-2, Box 4.

INT. OF MURDOCK & DELLROSE
REPAVE 6" CONCRETE
CITY OF WICHITA KANSAS
BE SMITH CITY ENGINEER
JULY 1934 Proj. No. C14-119

Table with columns for stationing and elevations. The table contains several rows of data, including station numbers like 725, 730, 735, 740, 745, 750, 755, 760, 765, 770, 775, 780, 785, 790, 795, 800, 805, 810, 815, 820, 825, 830, 835, 840, 845, 850, 855, 860, 865, 870, 875, 880, 885, 890, 895, 900, 905, 910, 915, 920, 925, 930, 935, 940, 945, 950, 955, 960, 965, 970, 975, 980, 985, 990, 995, 1000.

B.M. "X" in E. end Curb Ret. NE Cor. Oliver & Murdock 18657



NOTE
 All elevations shown are new grade.
 For existing grade see book 9, pages 64,
 65 and 66. Profiles of E and E10 both
 days are in Plates 3-2, Box 5.

INT. OF MURDOCK & DELLROSE
 REPAVE 6" CONCRETE
 CITY OF WICHITA KANSAS
 B. SMITH CITY ENGINEER
 JULY 1954 Proj. No. C14-119

Sewer
Main