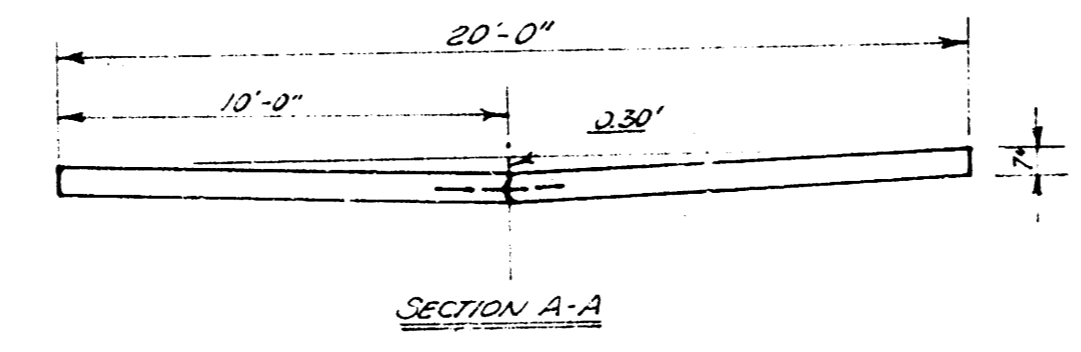
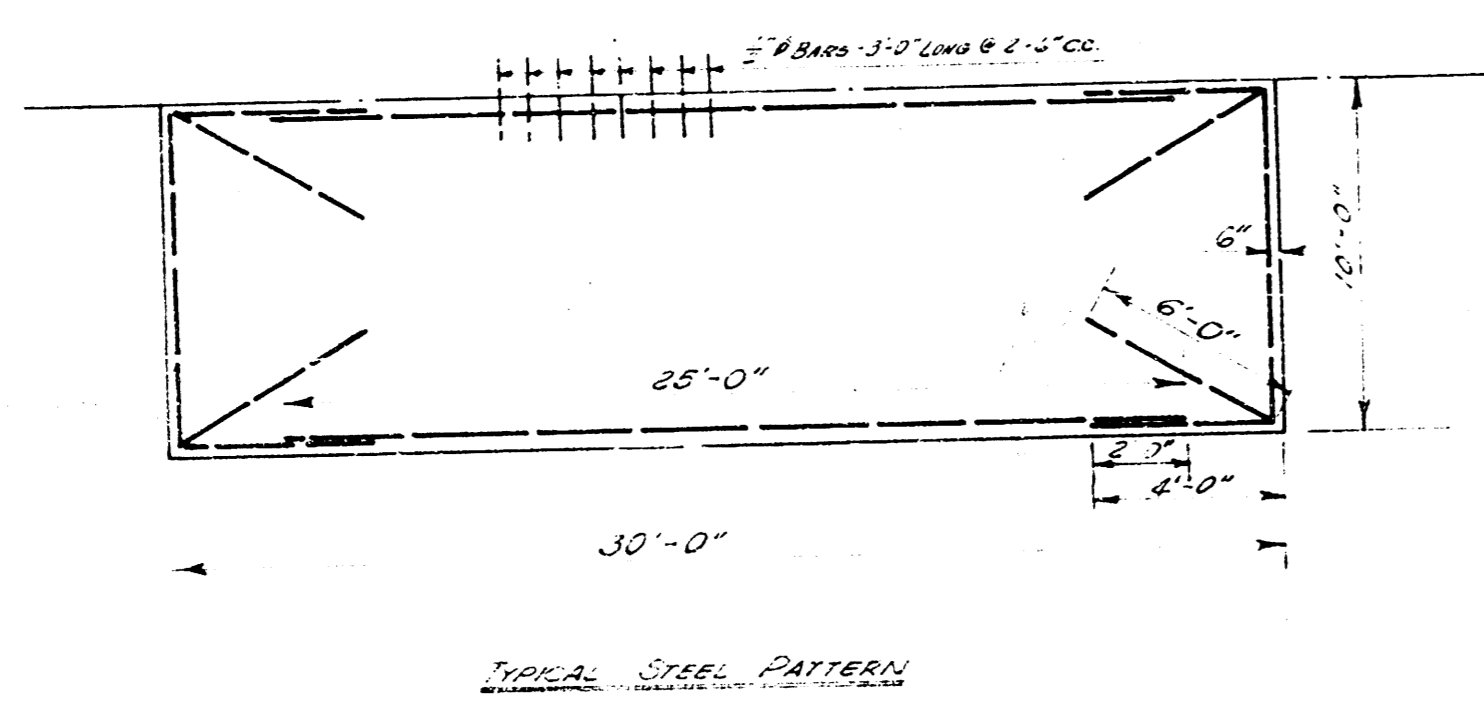
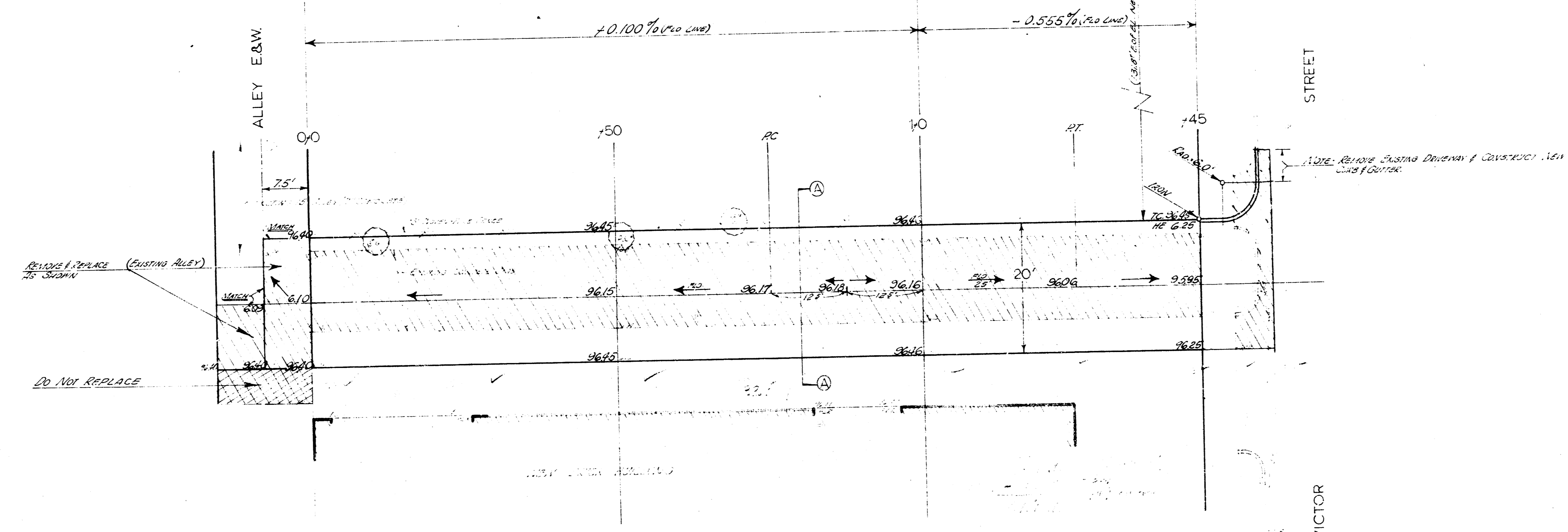




NORTH

SCALE: 1"=10'  
 311 = 95.61 TOP IRON IN TRIMBLE, EL. NEW YORK & VICTOR (F)

PI. S.W. 1/4. CEN. 96.00



QUANTITY TOTALS	
375.7	50 Yds 7" CONCRETE PAVEMENT
150.0	CON. FT. REINFORCED IN CURB
50	CONCRETE CURB JOINTS
1625	STEEL JOINT
450	CONCRETE JOINT
1950	CON. REINFORCING STEEL
2430	50 Yds PAVEMENT REMOVED
1340	50 FT DRIVE REMOVED
2	20 TREES REMOVED

FINAL QUANTITIES	
375.7	50 Yds 7" CONCRETE PAVEMENT
150.0	CON. FT. REINFORCED IN CURB
50	CONCRETE CURB JOINTS
1625	STEEL JOINT
450	CONCRETE JOINT
1950	CON. REINFORCING STEEL
2430	50 Yds PAVEMENT REMOVED
1340	50 FT DRIVE REMOVED
2	20 TREES REMOVED

ALLEY Betw New York and Pennsylvania  
 N.L. Alley N of Douglas to S.L. Victor Street  
 20ft - 7" Concrete  
 PRIVATE CONSTRUCTION  
 City of Wichita, Kansas  
 R.E. Smith City Engineer  
 Date: Dec. 1912