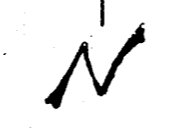


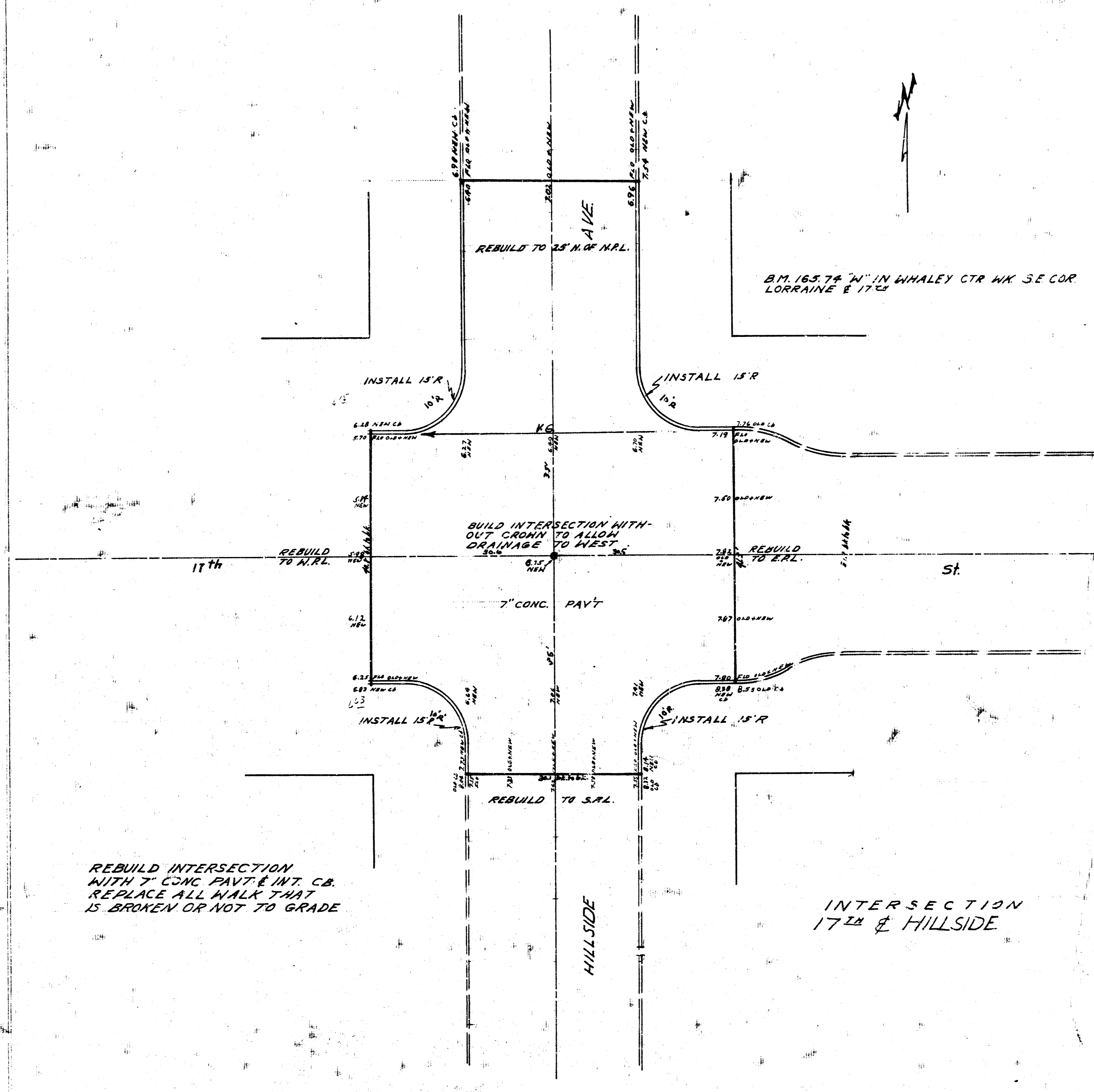
B.M. 17251 'B' IN BLAKE E. END NW S.W. COR.



REBUILD INTERSECTION WITH 7" CONC. PAVT & INT. CB. REPLACE WALK THAT IS BROKEN OR NOT TO GRADE.

REBUILD TO S.L. 15' SZ WEST.
REMOVE NECESSARY PAVT. CB. TO INSTALL CA. 2" DIA. 8" THICK ON BOTH SIDES TO 175' S. OF S.L. 15' WEST.

INTERSECTION 15TH & HILLSIDE



B.M. 16574 'N' IN WHALEY CTR NW SE COR LORRAINE E. 17TH



REBUILD INTERSECTION WITH 7" CONC. PAVT & INT. CB. REPLACE ALL WALK THAT IS BROKEN OR NOT TO GRADE.

INTERSECTION 17TH & HILLSIDE