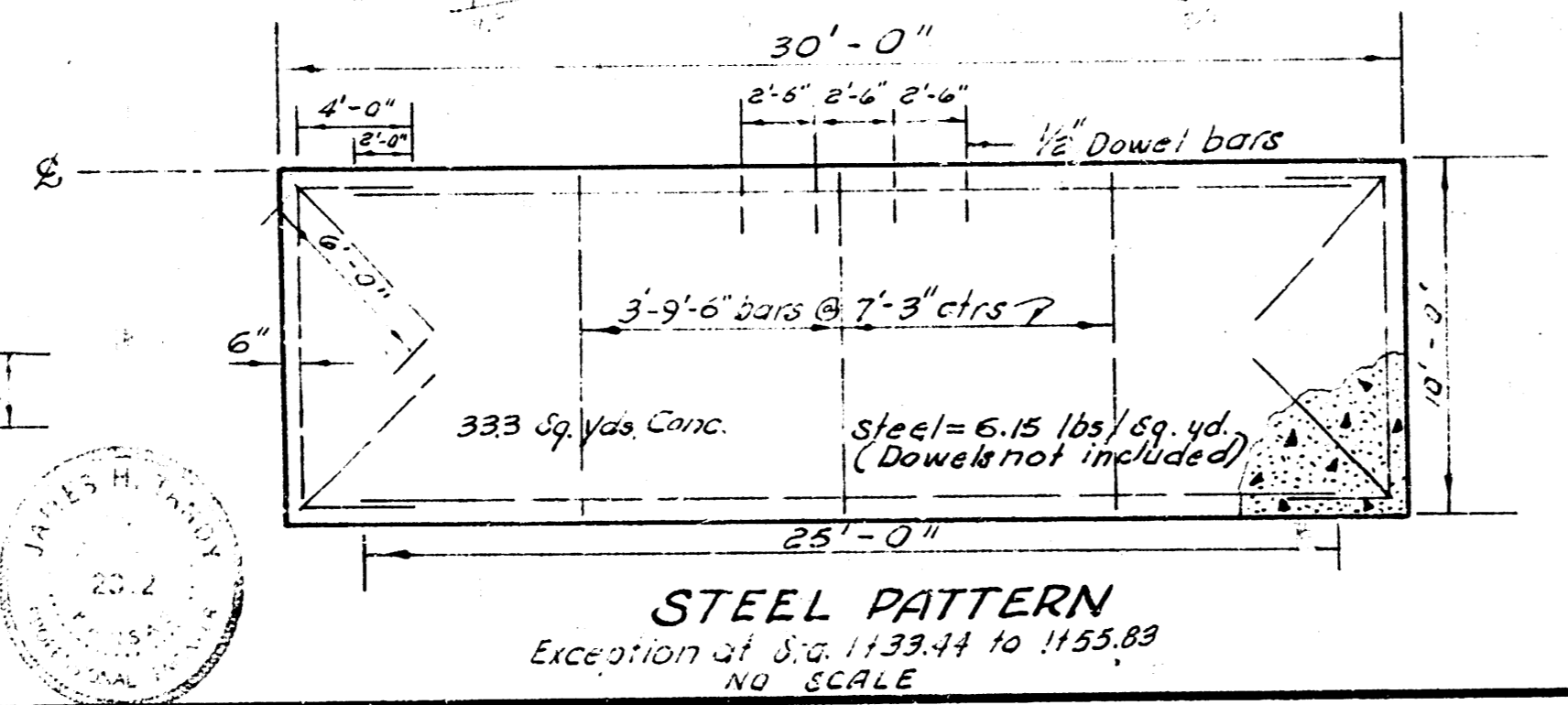
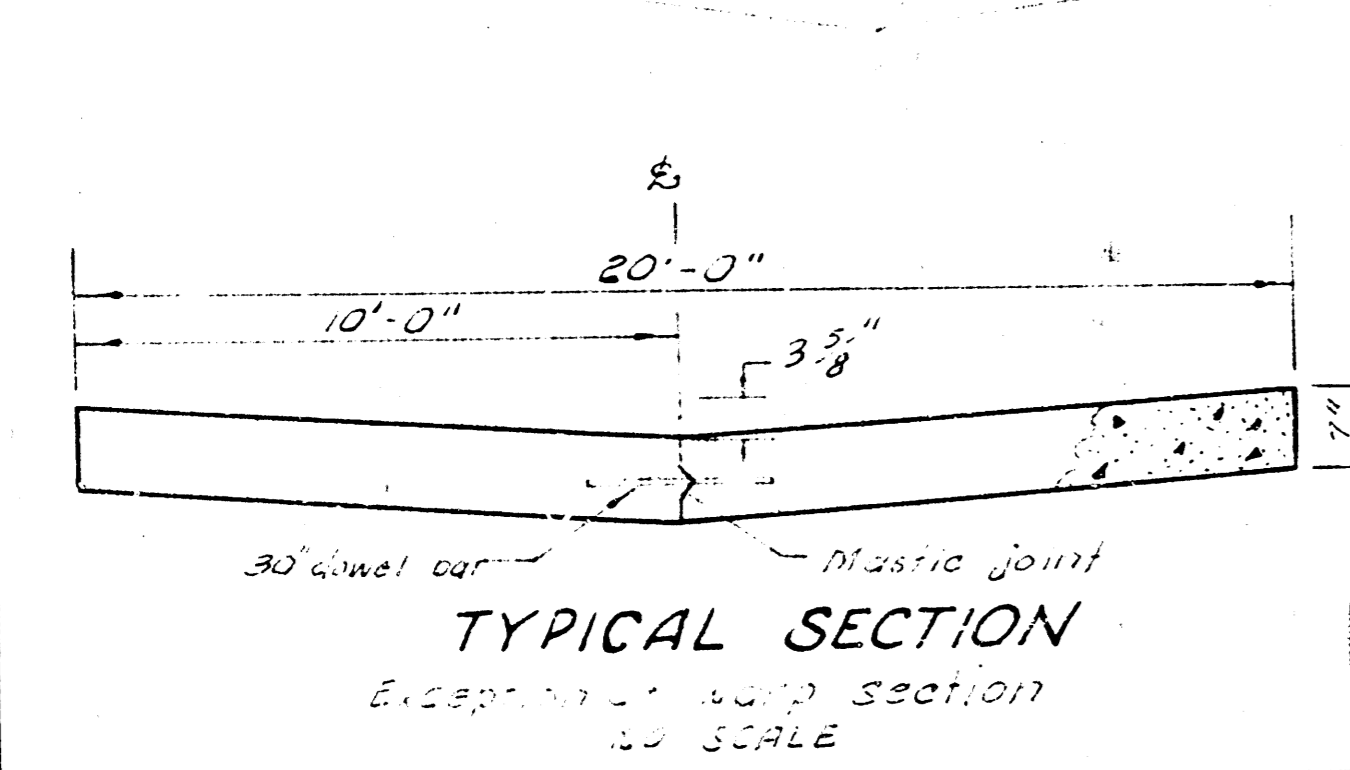
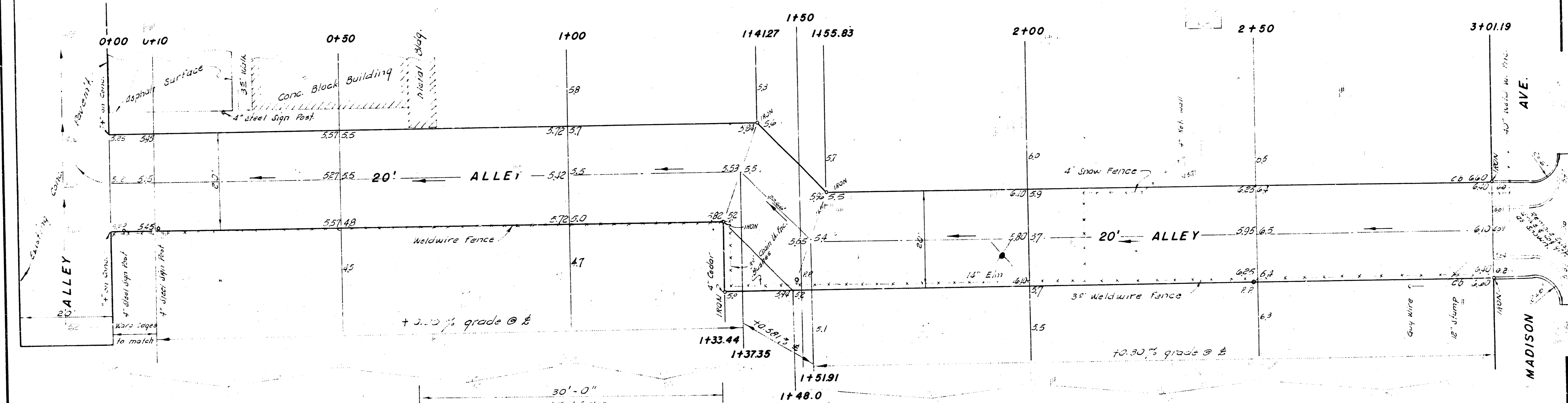
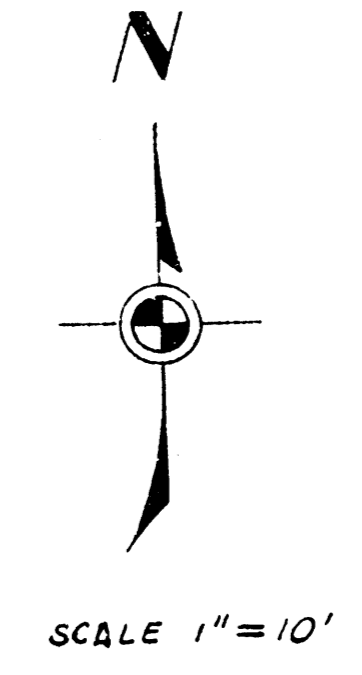
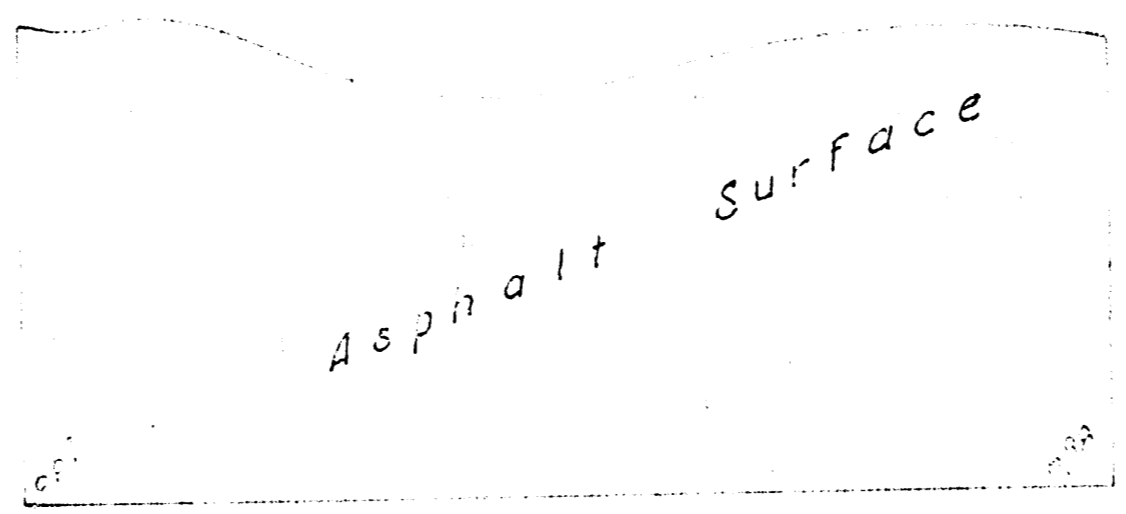


3. N. 25.40 U.E. cont. Long. P.O. No. F 2127 N. Platt.
 2. D. 25.21 "4" on E. cb Sofaway Park lot N.L. Alley E.

EXCAVATION		FILL (CONTRACTION)	
CITY	PROP.	ROP	
13.4	172.6		
1.3	17.0	952	
14.7 Cu. Yds.	187.6 Cu. Yds.	3.5	38.7 Cu. Yds.



NOTE:
 All reinf. steel to be 3/4" dia. bars except dowel bars.

ALLEY
 SOUTH OF 21ST ST.
 EL ALLEY W. OF MADISON TO MADISON
20' 7" CONG.
 CITY OF WICHITA, KANSAS
 B. E. SMITH CITY ENGINEER
 JULY 1962 PROJ. NO. C 11-43

