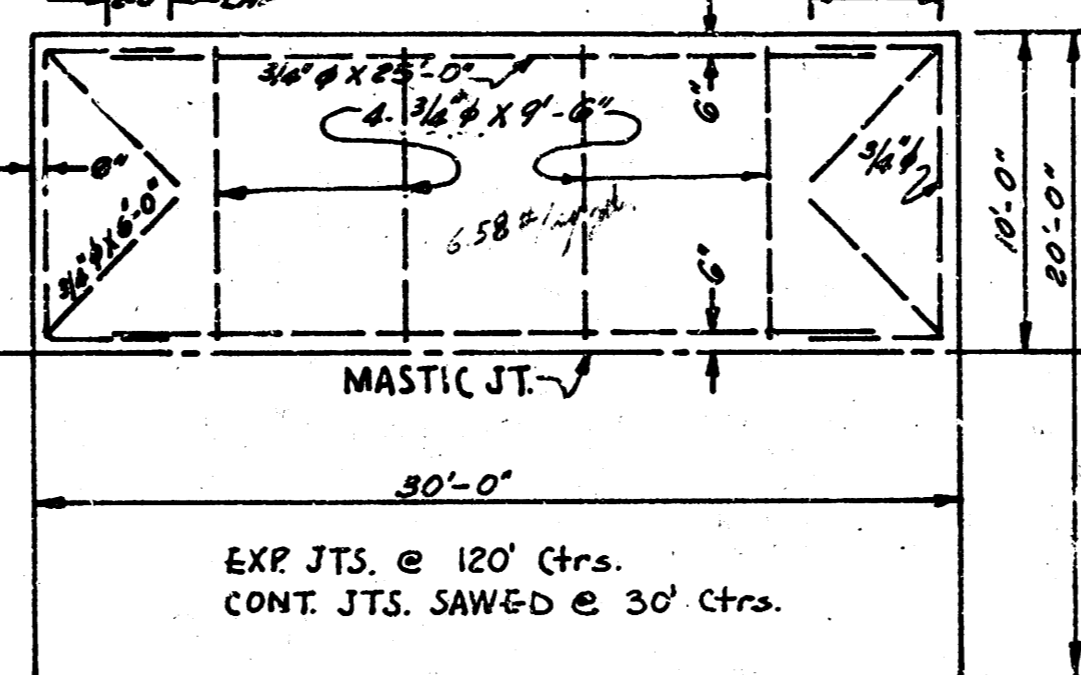
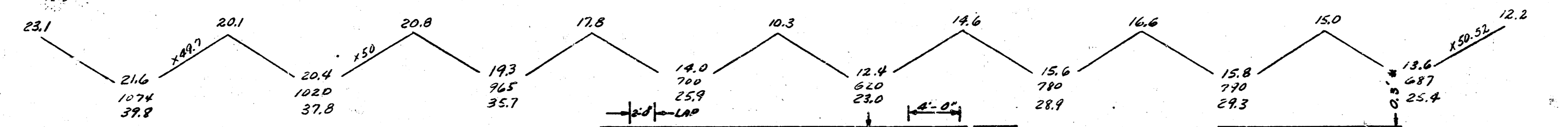
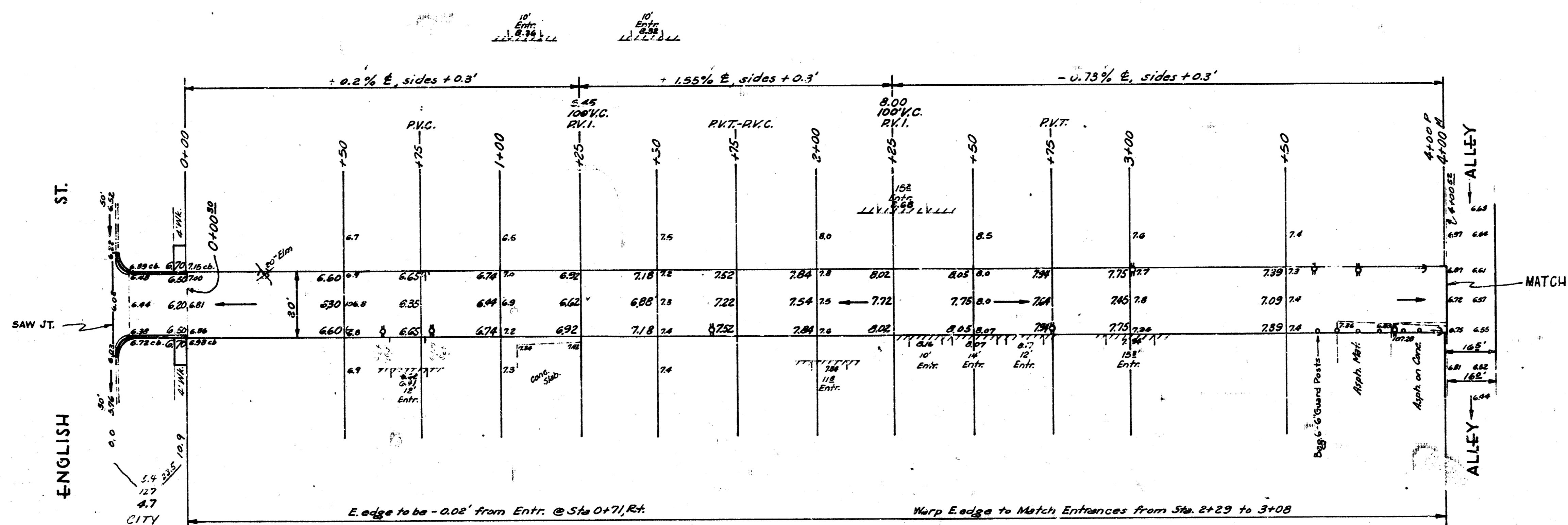


BM 108.33 "B" in Borden, Bk. Wk. N., 1/4 N. of N.L. English @ N.E. Cor. Laura & English

EXCAVATION
 PROP 245.8
 PLUS 10% 24.6
 TOTAL 269.4

CITY 4.7
 PLUS 10% .5
 5.2

SCALE: 1"=20'



STEEL PATTERN
 NO SCALE

TYPICAL SECTION
 NO SCALE

ALLEY E. OF LAURA
 N.L. ENGLISH - S.L. ALLEY, S. OF DOUGLAS
 20'-7" CONC.

CITY OF WICHITA, KANSAS.
 B. E. SMITH CITY ENGINEER
 MARCH 1957 PROJ. NO. C16-181

Youngs
 Hostetter
 Checked

