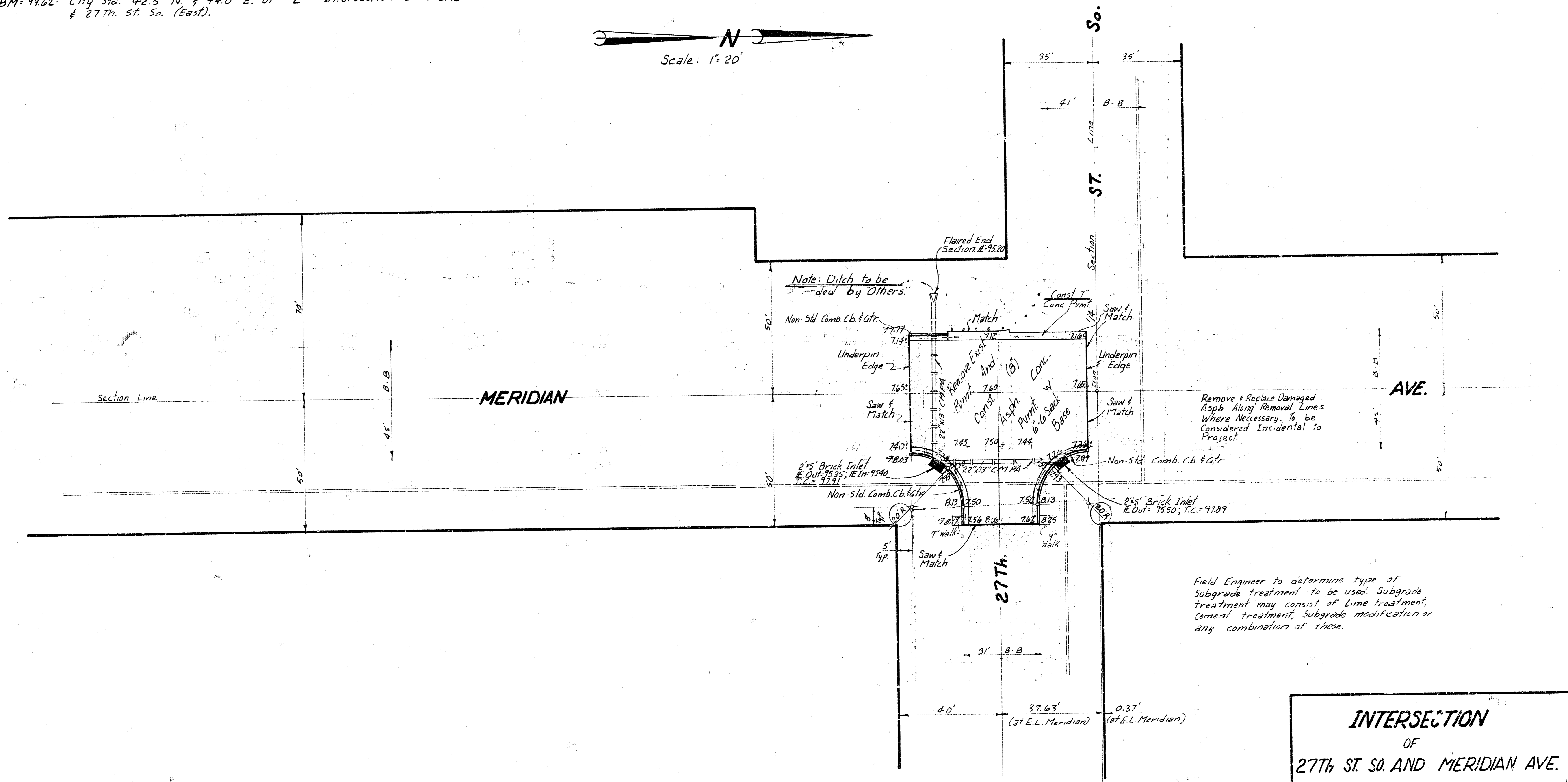
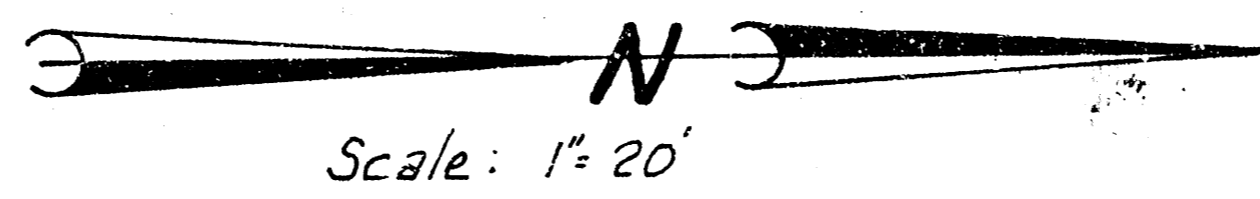


BM 9962 - City Sid. 42.5' N. & 44.0' E. of E Intersection of Meridian & 27th St. So. (East).



Remove & Replace Damaged Asphalt Along Removal Lines Where Necessary. To be Considered Incidental to Project.

Field Engineer to determine type of Subgrade treatment to be used. Subgrade treatment may consist of Lime treatment, Cement treatment, Subgrade modification or any combination of these.

INTERSECTION
 OF
27th ST. SO. AND MERIDIAN AVE.
 8" ASPH. CONC. PAVT
 & DRAINAGE
 CITY OF WICHITA, KANSAS
 R. W. LINN - CITY ENGINEER
 DATE: PROJ. NO. BHK501001