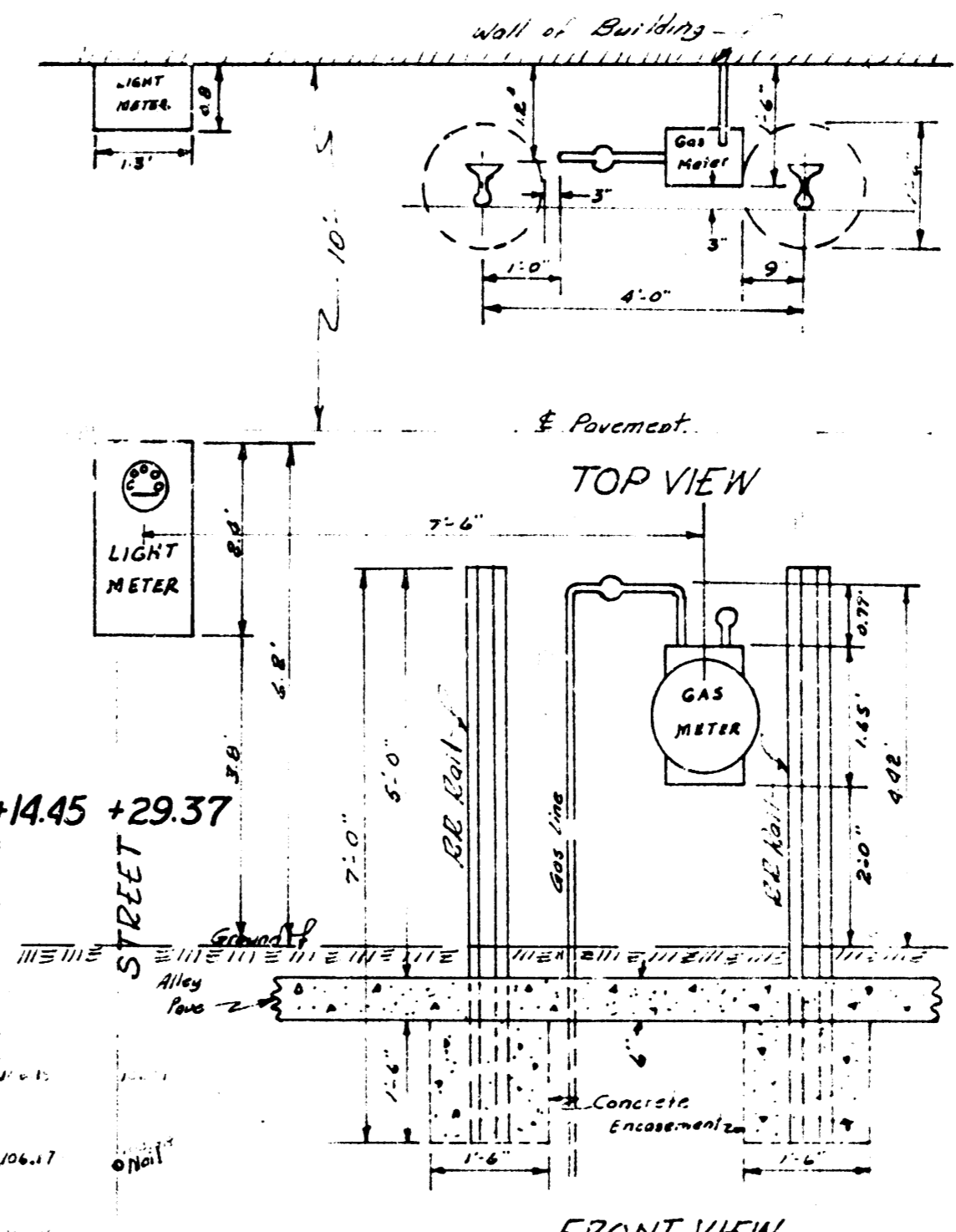
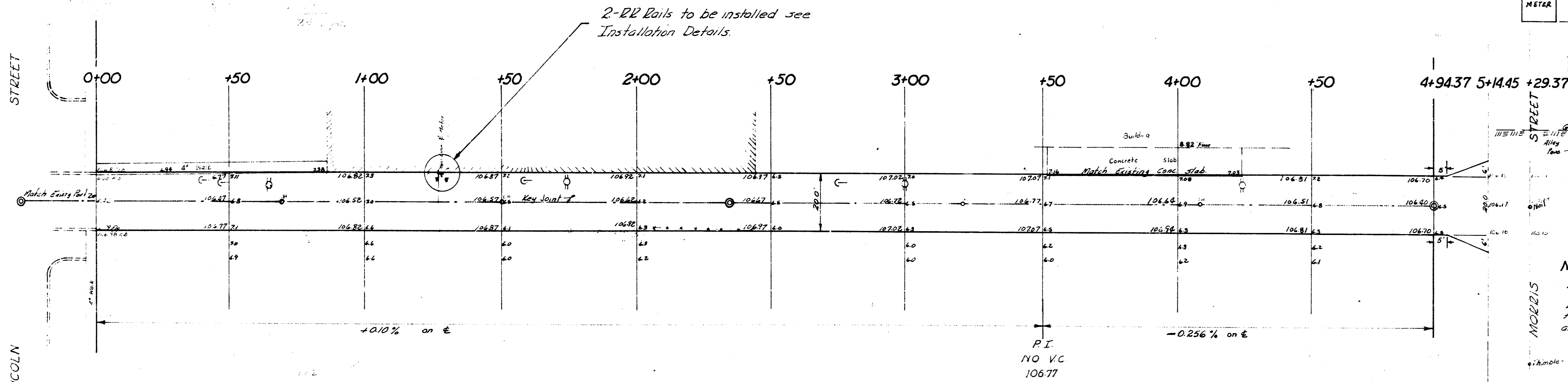
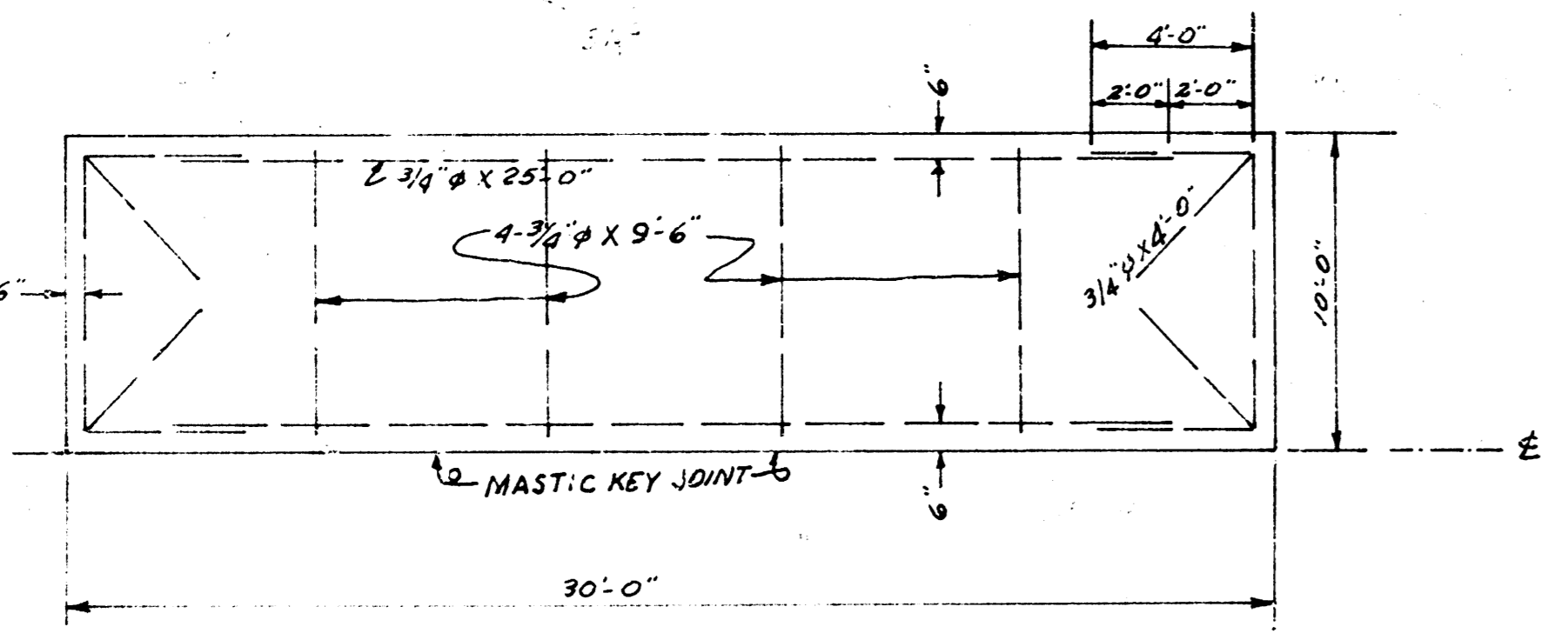


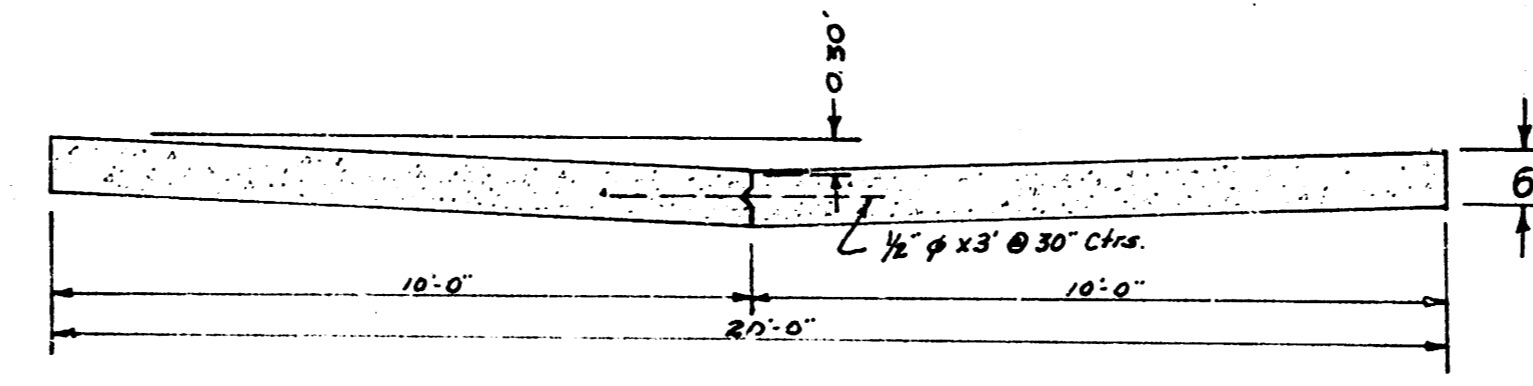
BM: 106.92 "P" in PWS on Ecb # 4<sup>th</sup> Walk East Alley App N.S. Lincoln bet. Mosley & Washington  
 BM: 108.34 60# Spt. ES Bell Pole at EL Mosley & SL Morris  
 BM: 107.62 60# Spt. Sa Side 24<sup>th</sup> Mulberry, SL Morris, W. Alley E. of Mosley.



NOTICE TO CONTRACTOR: -  
 2-22 Rails Installation Details  
 2-22 rails to be set in concrete as shown  
 to protect Gas Meter. Rails to be used  
 are to be picked up at City Material Yard.



STEEL PATTERN  
 NO SCALE



TYPICAL SECTION KEY JOINT  
 NO SCALE

Sheet 1 of 2  
**ALLEY BETWEEN MOSLEY & WASHINGTON**  
 NL Lincoln to SL Morris  
 20'-6" Conc.  
**CITY OF WICHITA, KANSAS**  
 B.E. SMITH CITY ENGINEER  
 MAY 1957 PROJ. NO. C14-347

