

B.M. 124.15 S.E. Con Conc. Porch, House # 2201 N. Minneapolis
 B.M. 124.37 7" in T.E.V. Fire Hydrant N.E. Con 21st & Minneapolis

Stationing on E

0+00 # Bench and Best Curve
 0+00 # Bench and Best Curve
 0+00 # Bench and Best Curve
 0+00 # Bench and Best Curve
 0+00 # Bench and Best Curve

1+25 End Conc Parapet Bay 4
 Begin Brick Building 10' 4"

1+50 End Brick Building 10' 4"
 Begin Conc Bay 10' 4"

1+75 Transformer Pole 11' 4"

1+85 Transformer Pole 11' 5" 4"
 Begin Wire Pole 11' 5" 4"

1+99 Conv 8x8 Brick Mast 10' 6"

R.I.
 16 VC
 2+00
 E.I. 122.20
 E.L. 121.30

1+77 End Conc Bay 4
 Begin Brick Building 10' 4"
 1+80 End Wire Pole 10' 4"
 1+85 End 8x8 Brick Mast 10' 4"

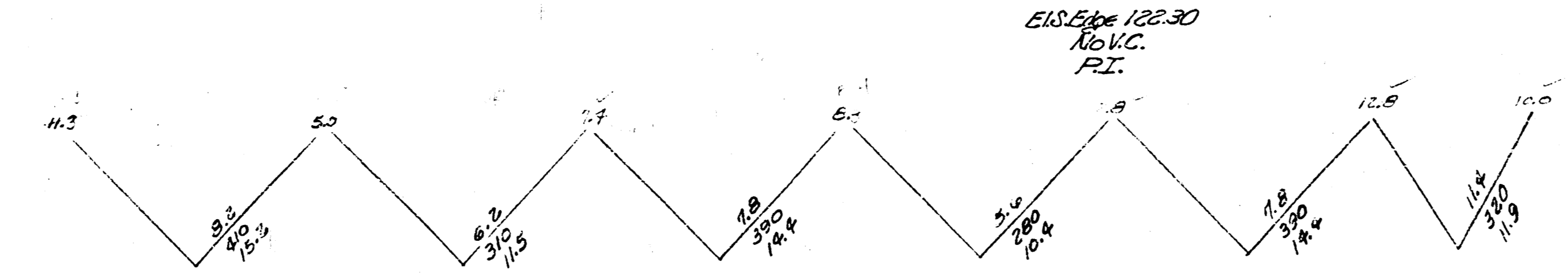
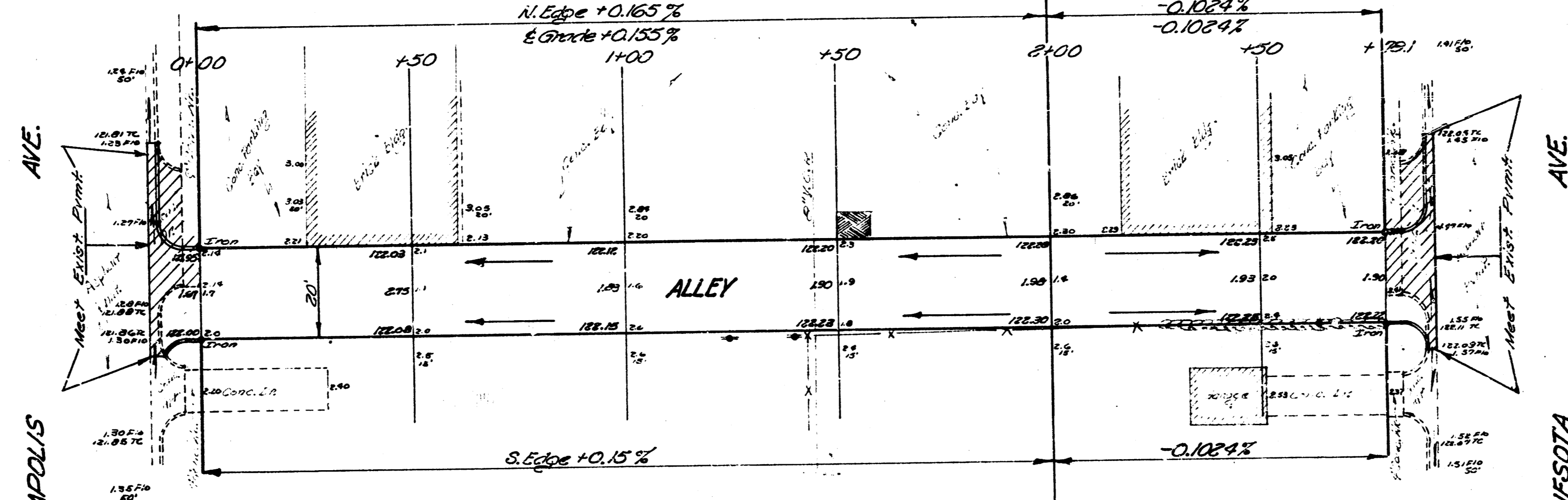
1+85 End Brick Building 10' 4"
 Begin Conc Parapet Bay 10' 4"

1+85 R. Pole 10' 4"

1+87 End 8x8 Brick Mast 10' 4"
 1+90 End Conc Parapet Bay 10' 4"
 1+95 End Conc Parapet Bay 10' 4"
 1+95 End Conc Parapet Bay 10' 4"

Property	E.W.	City
15.2		0
11.5		
14.4		
10.4		
14.4		
11.3		
77.8		
40% 3.9		
Total	85.6	

NOTE TO FIELD ENGINEER:
 Contact owner about Driveway
 removal before they are removed



ALLEY S. OF 21ST ST.
 E.L. MINNEAPOLIS AVE. TO W.L. MINNESOTA AVE.
 6' CONC. 20' WIDE

CITY OF WICHITA, KAN.

S.E. SMITH
 JUL 1953

CITY ENGINEER
 FROM A6.C12-109



11-10-53 BH 37-2
 15
 15
 15