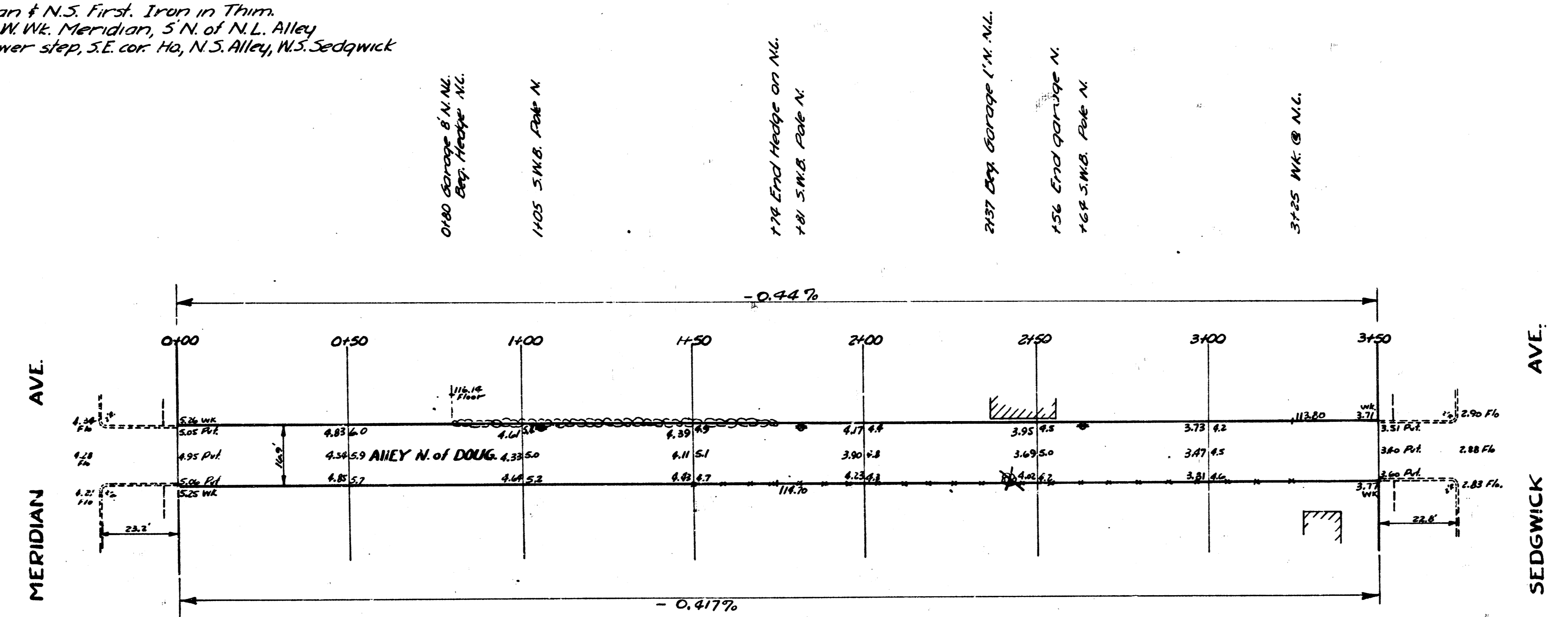
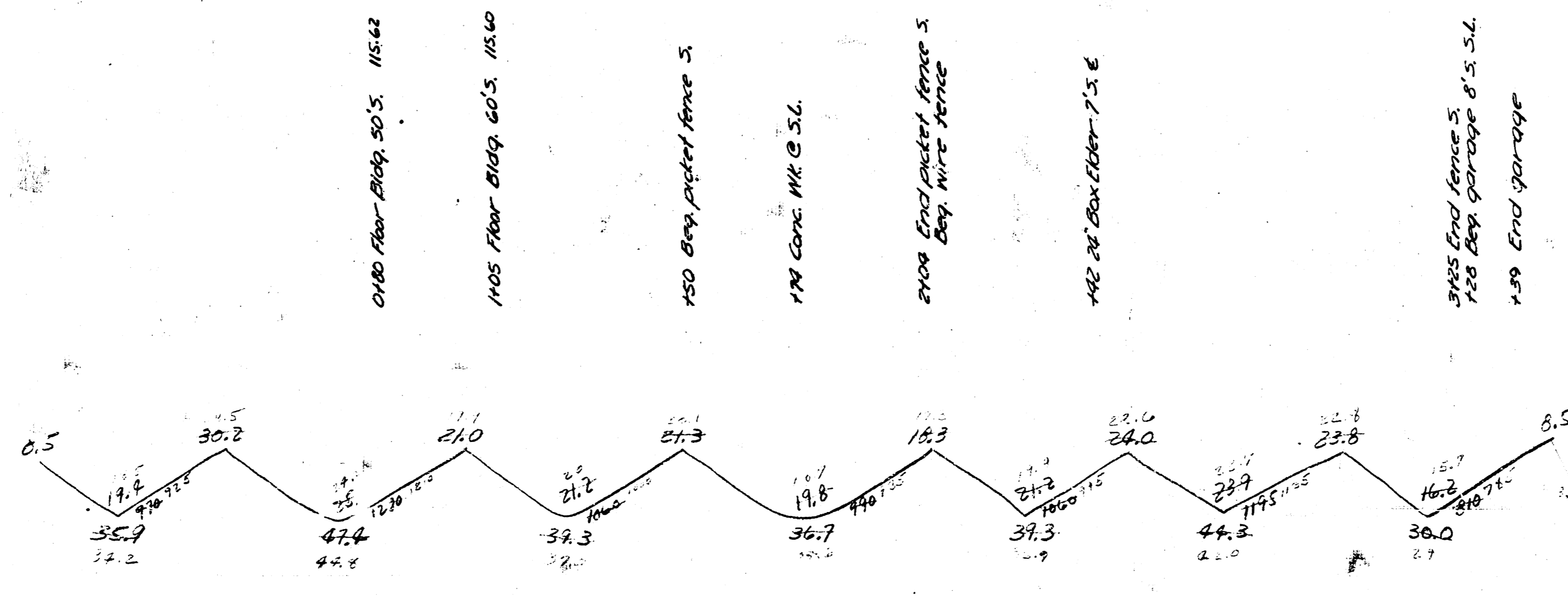


C.M. # 53

B.M. 114.33 c Meridian & N.S. First. Iron in Thin.
 B.M. 115.06 * in 1949, W. W. Meridian, 5' N. of N.L. Alley
 B.M. 114.49 S.E. cor. lower step, S.E. cor. Ho, N.S. Alley, N.S. Sedgwick



Excav.	
Prop.	City
35.9	
47.4	
39.3	
36.7	
39.3	
44.3	
30.0	
272.7	
+107.0	27.3
Total 300.8 cu. Yds.	



ALLEY - N. DOUGLAS
 EL MERIDIAN WL SEDGWICK
 6' C - 16.9' WIDE
 CITY OF WICHITA, KANS.
 LK WHITE CITY ENGINEER
 JULY, 1950 Proj. No. CIO-77