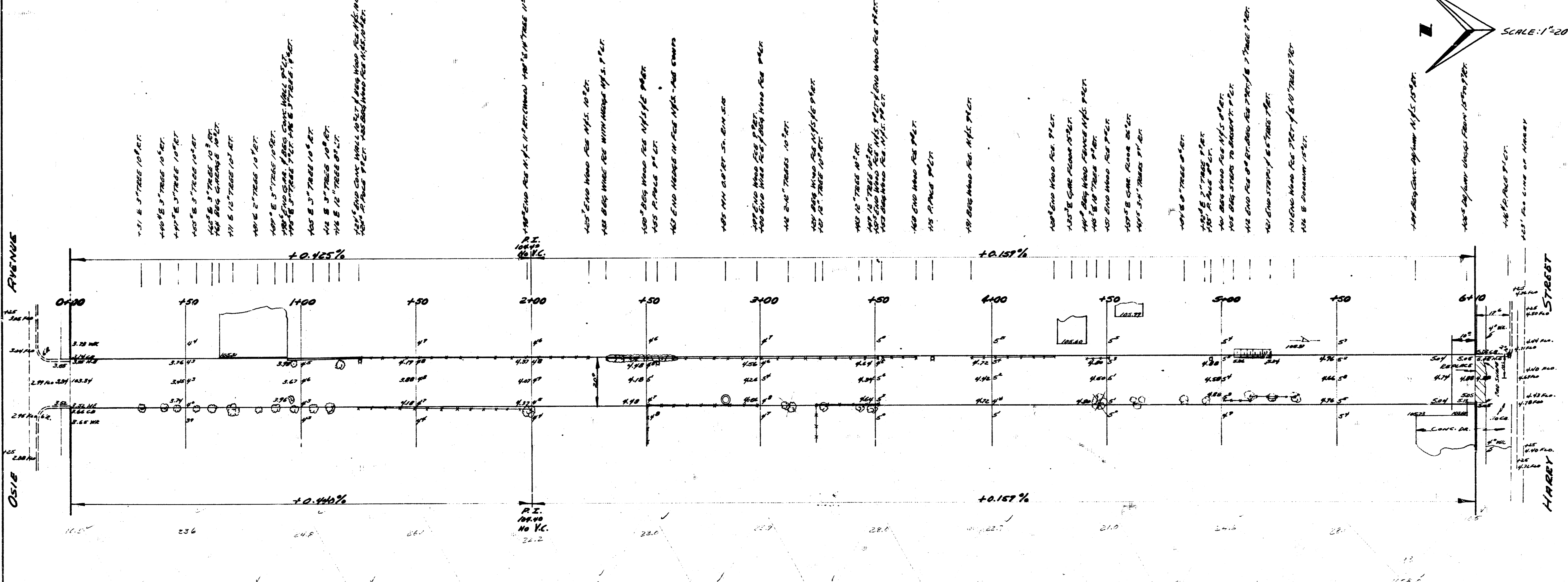
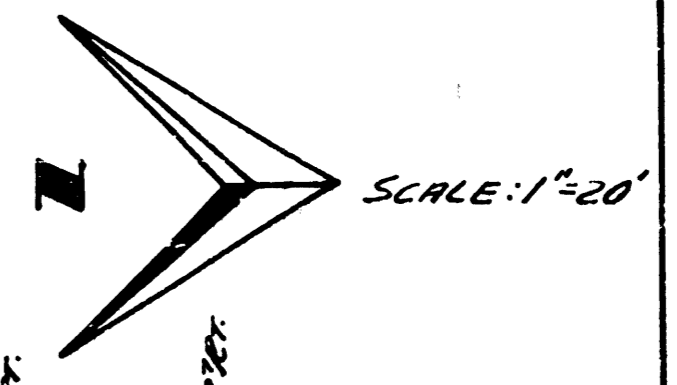


B.M. 102.76 IRON IN TRIMBLE N.S. OSIE / E TOPERA
B.M. 106.25 N.E. COR 2ND ST & WESTMINSTER PRESBYT. CHURCH



NOTE: STATIONING ON E

TOTAL EXCAV.
PROP
110% 522.6
376.8 CUYDS.



ALLEY E OF MARKET
S.L. HARRY TO N.L. OSIE
6" CONC - 20" WIDE
CITY OF WICHITA, KANSAS
L.R. WHITE CITY ENGINEER
AUGUST 1952 PROJ. NO. C11-277