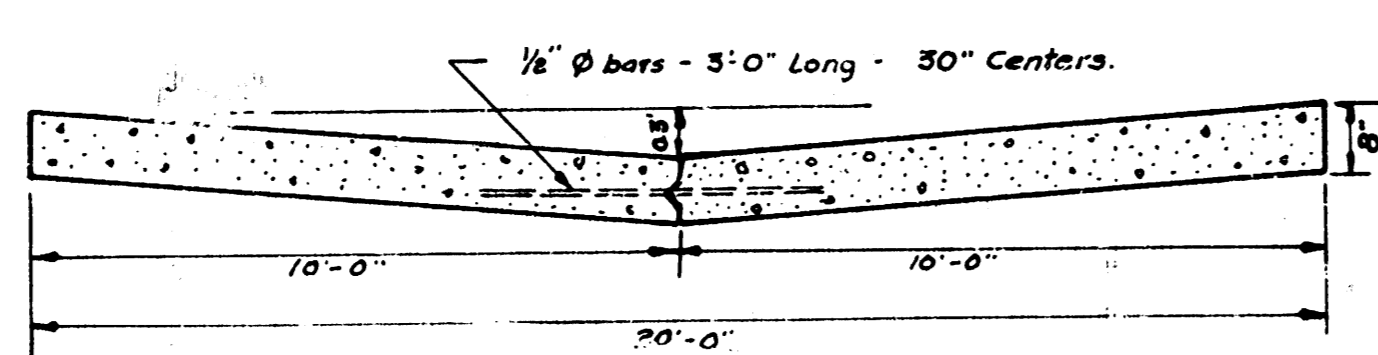
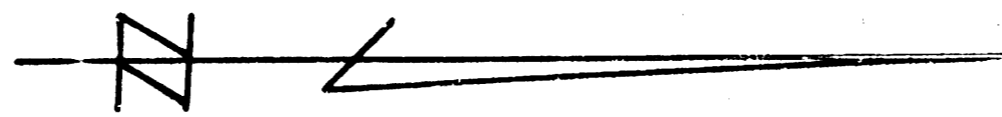


TYPICAL STEEL PATTERN  
No Scale.



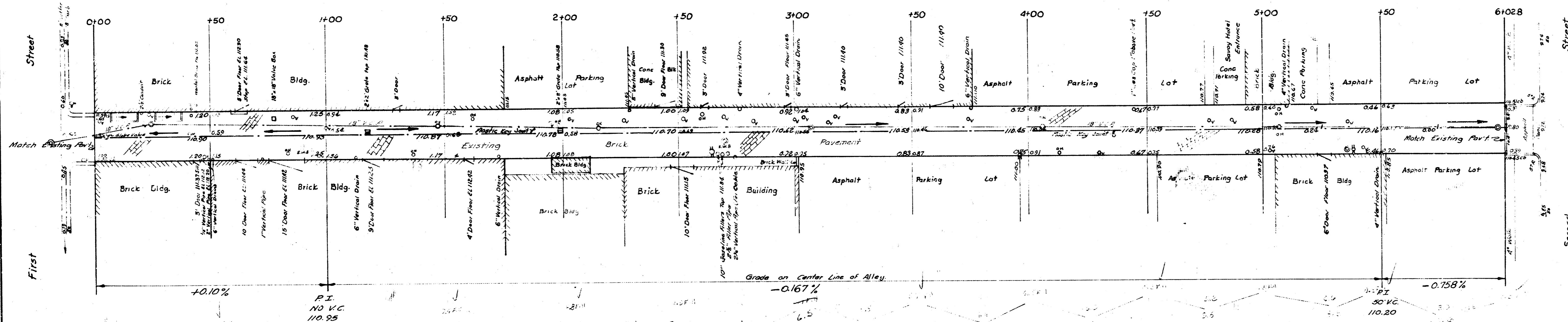
TYPICAL SECTION  
No Scale



B.M. 116.58 NE COR. E.C. SW. 1/4 SW. BROADWAY + Douglas  
B.M. 113.01 NW COR. Conc. wall, CS of Alley, n. of Bldg. 31 of 1st St.  
B.M. 110.78 S. 2nd, L&E. MH on c/sk. E.S. Alley, n. of Bldg. 43 of 2nd St.

**NOTICE TO FIELD ENGINEER & CONTRACTOR:**

Extreme caution must be exercised in removing existing pavement so as not to disturb or damage existing Sanitary Sewer Manholes, O.H. or Traps. Field Engineer must locate & mark same prior to removal.



CHAMBERS  
GREENE  
ENGINEERS

ALLEY bet Broadway & Market  
 N. 1<sup>st</sup> St. to S. 2<sup>nd</sup> St.  
 20'-8" Conc.  
 CITY OF WICHITA, KANSAS  
 B. E. SMITH CITY ENGINEER  
 SEPT. 1947 PROJ. NO. C17-38

