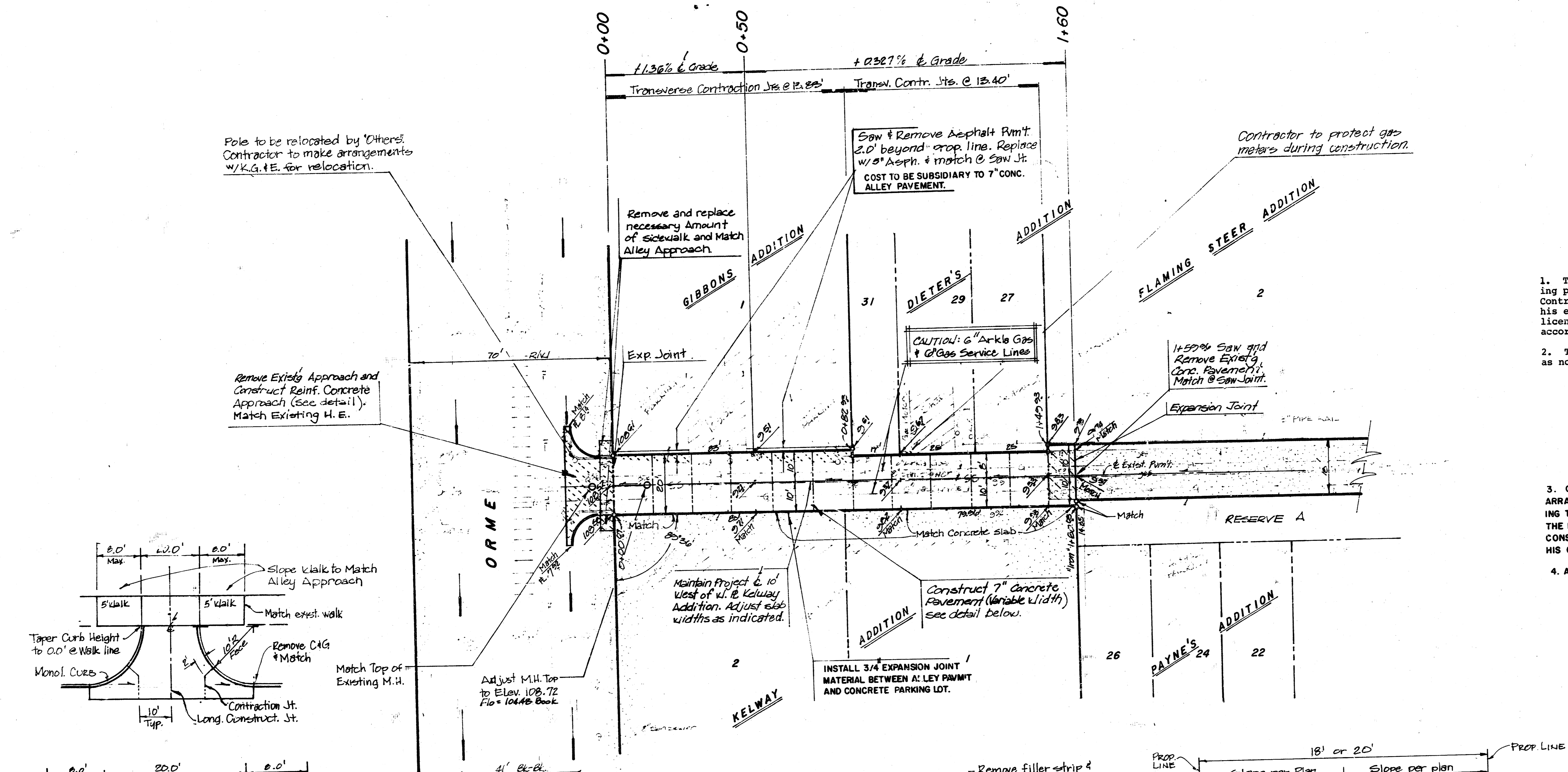
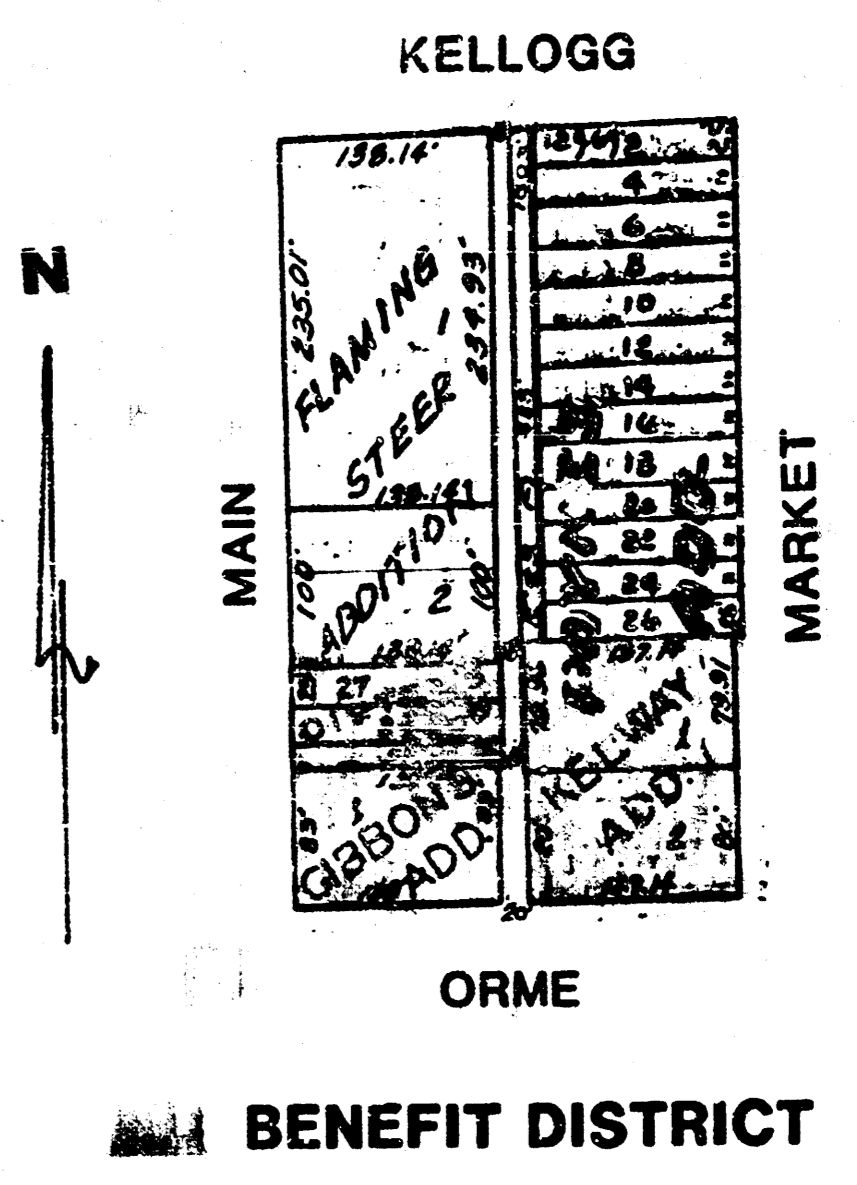


BENCH MARK: 1/2" In R.I. 2113, N.W. Corner Market & Orme, West end Radius Top of curb. Elevation = 107.62 City Datum

1" = 20' N



Pole to be relocated by 'Others'. Contractor to make arrangements w/ K.G. & E. for relocation.

Remove and replace necessary amount of sidewalk and Match Alley Approach.

Saw & Remove Asphalt Pmt 2.0' beyond prop. line. Replace w/ 6\"/>

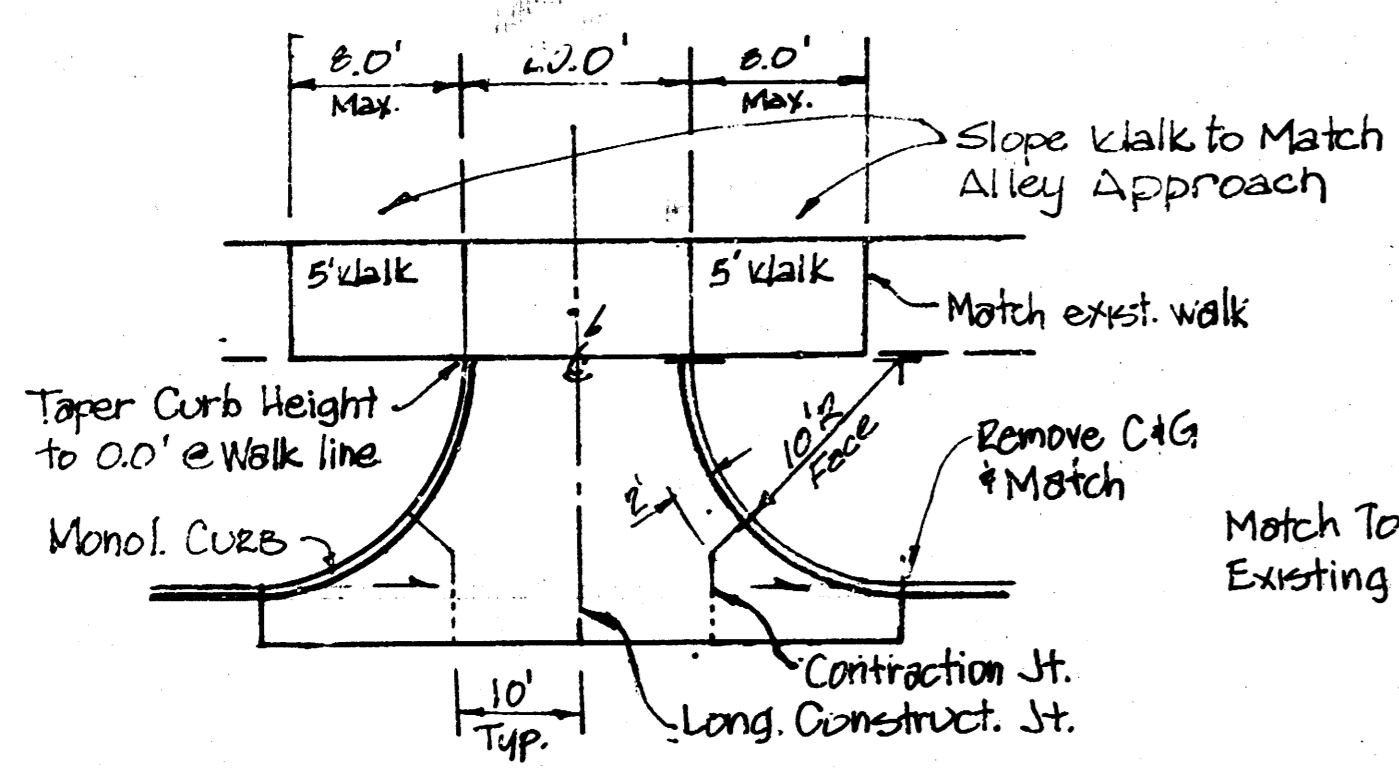
Contractor to protect gas meters during construction.

Remove Existing Approach and Construct Reinf. Concrete Approach (See detail). Match Existing H.E.

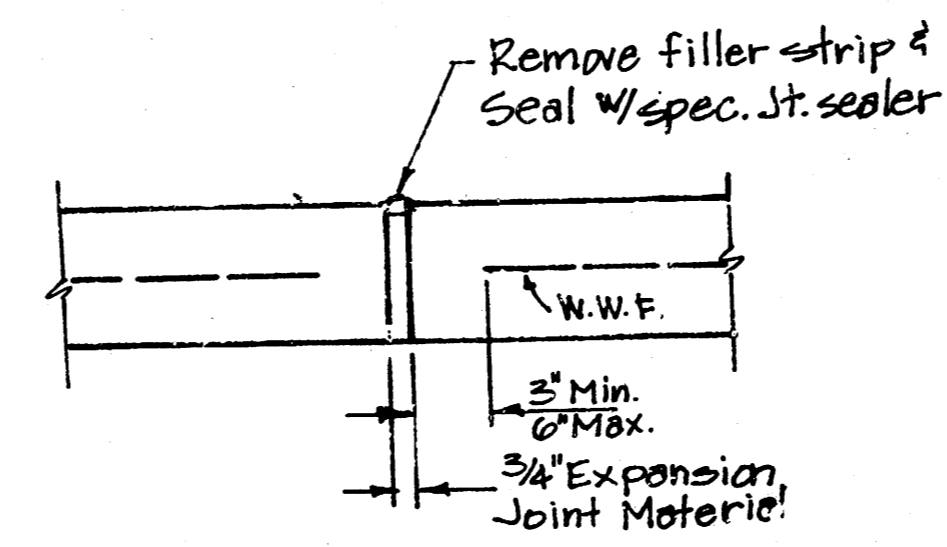
Maintain Project 6' 10\"/>

Construct 7\"/>

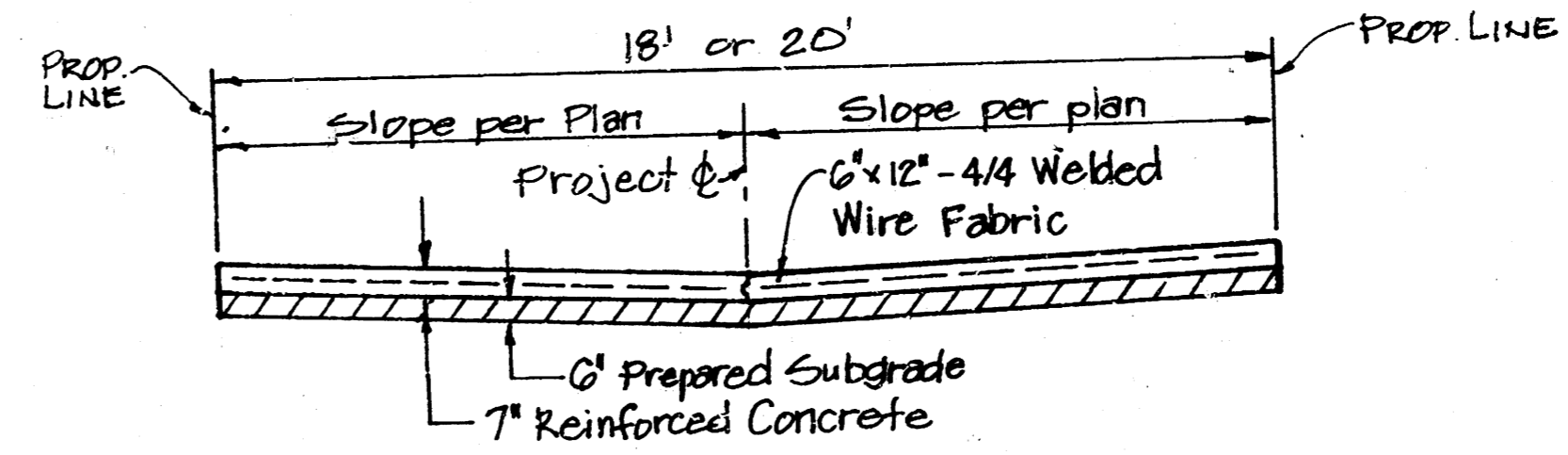
INSTALL 3/4\"/>



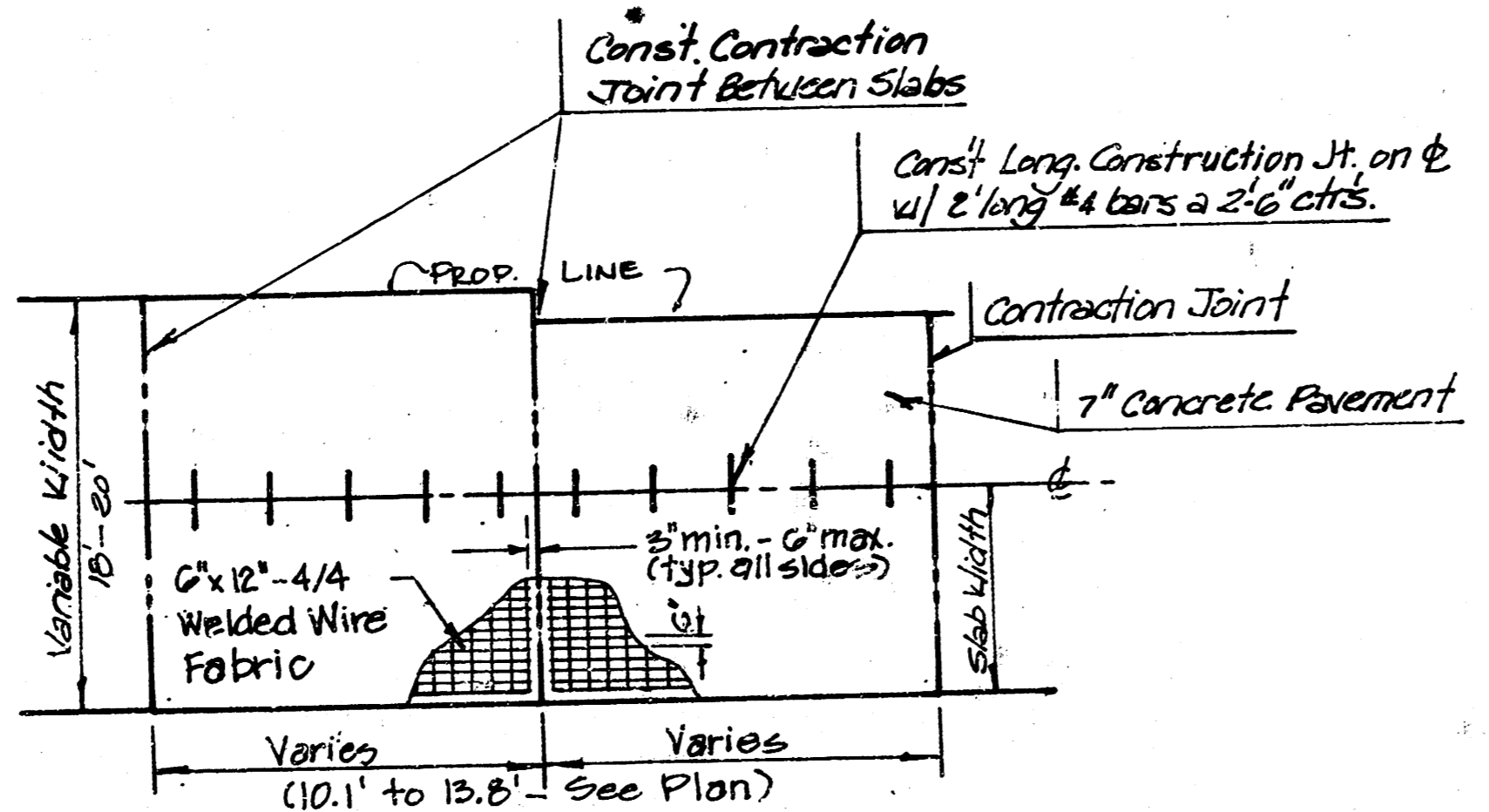
ALLEY APPROACH DETAIL



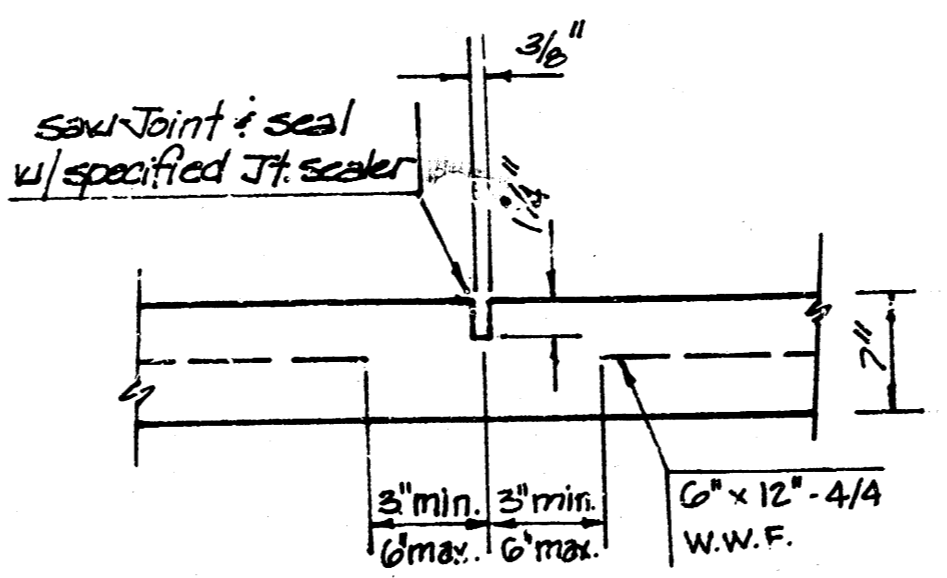
EXPANSION JOINT



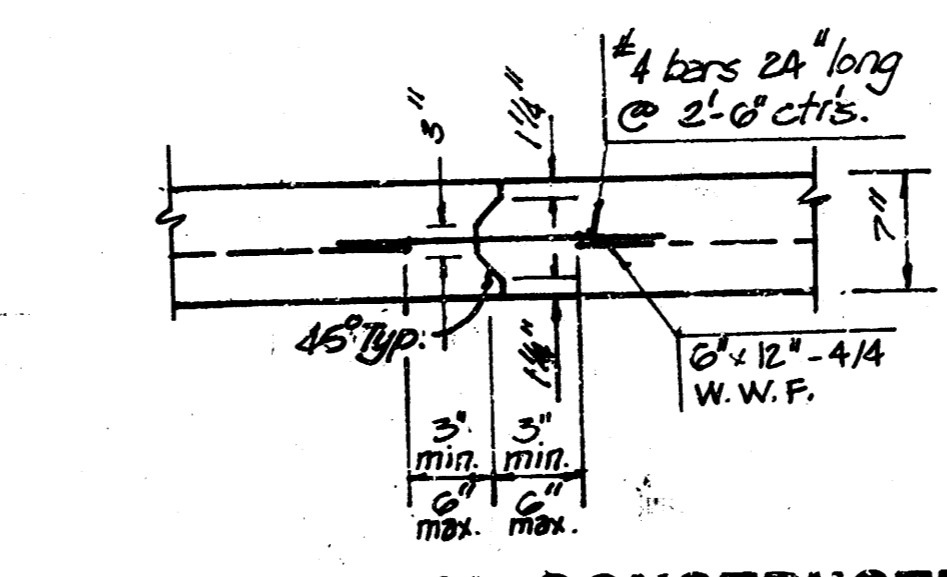
TYPICAL PAVEMENT SECTION



SLAB REINFORCEMENT DETAIL



CONTRACTION JOINT



LONGITUDINAL CONSTRUCTION JOINT

NOTE: All costs of reinforcing are to be included in bid price

GENERAL NOTES

- The Contractor shall be responsible for preserving property corners. Any irons disturbed by the Contractor's operations shall be re-established at his expense. Any such irons shall be reset by a licensed land surveyor or professional engineer in accordance with state laws.
- The Contractor shall contact the utility companies as noted on the plans before beginning any excavation.
- CONTRACTOR SHALL NOTIFY JERRY BLAINE 268-4210 AND ARRANGE TO HAVE THE SANITARY SEWER RETELIVISED FOLLOWING THE COMPLETION OF THE SUBGRADE WORK AND PRIOR TO THE PLACING OF THE PAVEMENT. ANY SEWER DAMAGES DURING CONSTRUCTION SHALL BE REPLACED BY THE CONTRACTOR AT HIS OWN EXPENSE.
- ALL SAWED JOINT IS TO BE SUBSIDIARY TO OTHER BID ITEMS.

EARTHWORK QUANTITIES

Excavation:	98.1 Cu. Yds.
+10%:	9.8
<b>Total</b>	<b>107.9 Cu. Yds.</b>



JULY 1985

**'ALLEY IMPROVEMENTS FOR ALLEY BETWEEN MAIN STREET AND MARKET STREET**  
 FROM N.L. ORME TO THE S.L. LOT 26 PAYNE'S ADDN.

**CITY OF WICHITA, KS**  
 PROJECT NUMBER  
 472-76-245-81456-000-001

**BAUGHMAN COMPANY, P.A.**  
 SURVEYING & ENGINEERING  
 316-262-7271 • 330 LAURA • WICHITA, KANSAS 67211

FILMED FROM THE BEST AVAILABLE COPY