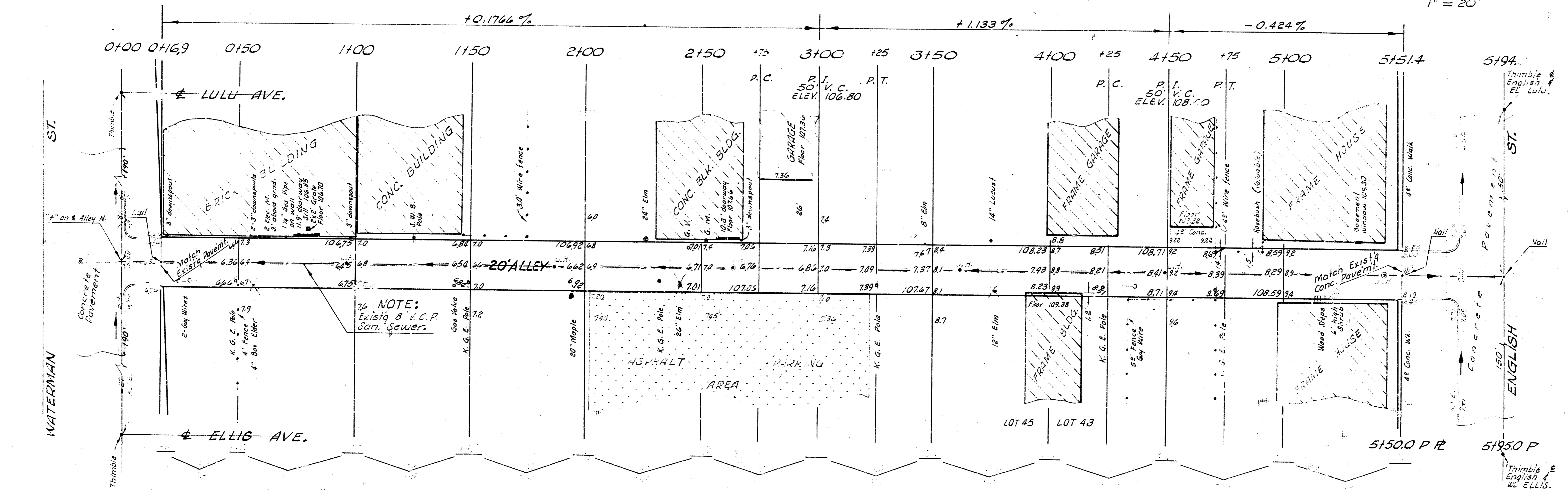
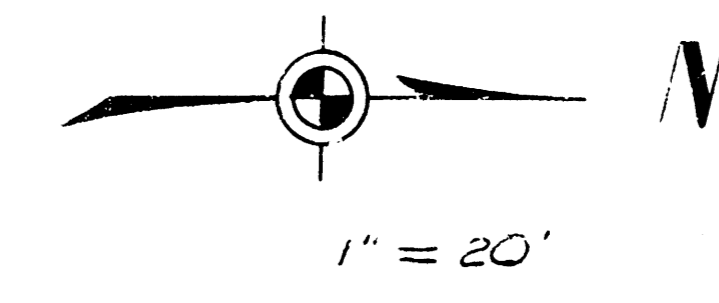
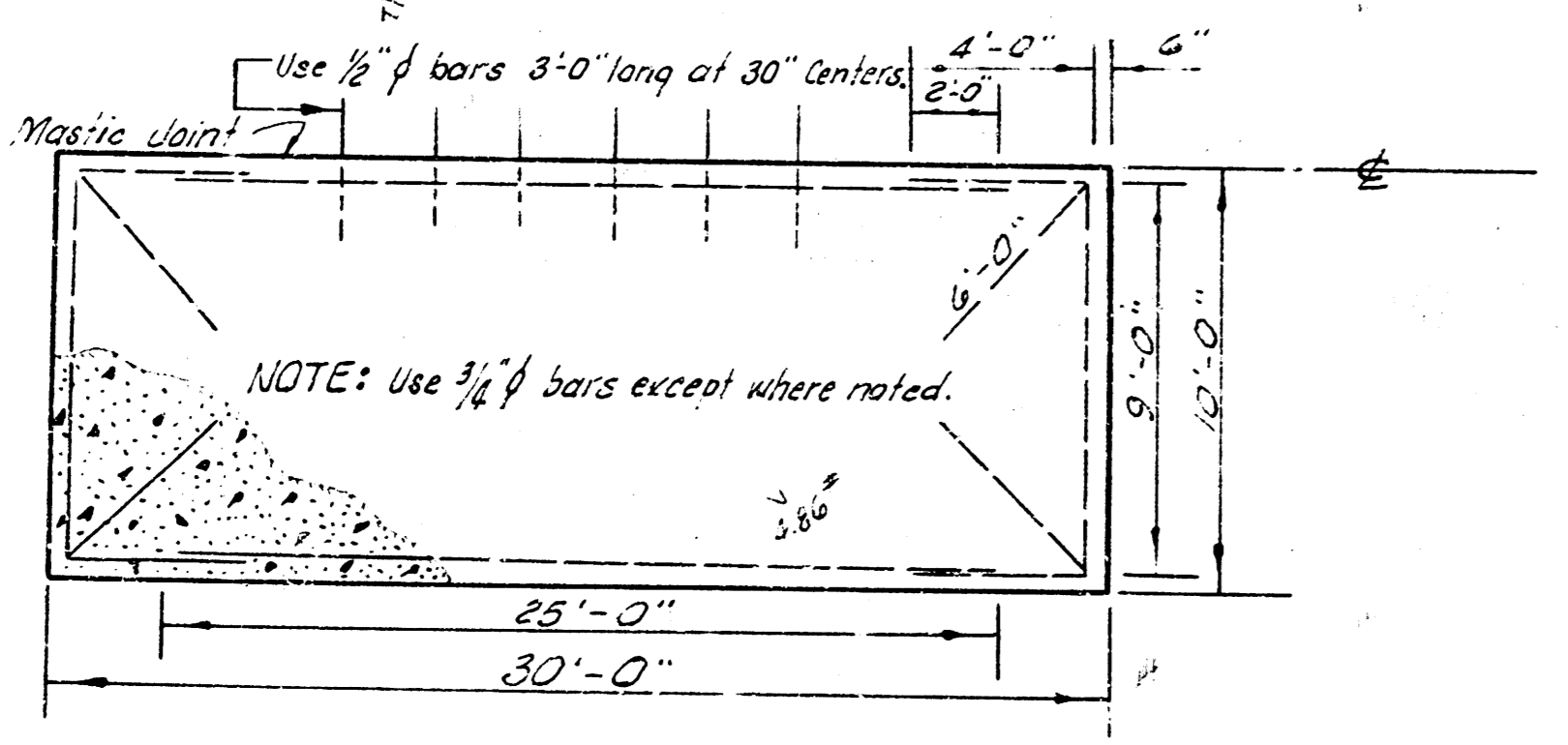


B. N. 106.62 S. rim M.H. c. of Waterman & Alley N.
 B. M. 108.43 "L" in Lefever c. wk. E. (E.S. of Alley W. of Ellis) S. S. of English.
 Base = & 20' Alley.

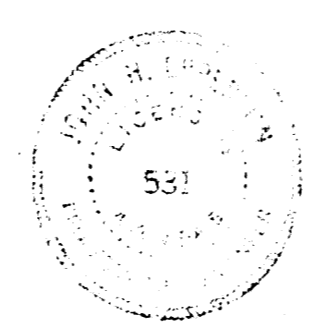


NOTE:
 Existing V.C.P.
 San Sewer



TYPICAL STEEL PATTERN
 NO SCALE

EARTHWORK
 Excavation
 Property
 391.7
 39.2
 430.9 Cu. Yds



ALLEY
 BETW. LULU & ELLIS
 NL WATERMAN TO SL ENGLISH
 20' CONCRETE - 7"
 CITY OF WICHITA, KANSAS
 B. E. SMITH CITY ENGINEER
 OCT. 1961, PROJ. NO. C11-22

Survey C. H. MILLS 64 1378
 L.S. C. H.
 CHICAGO