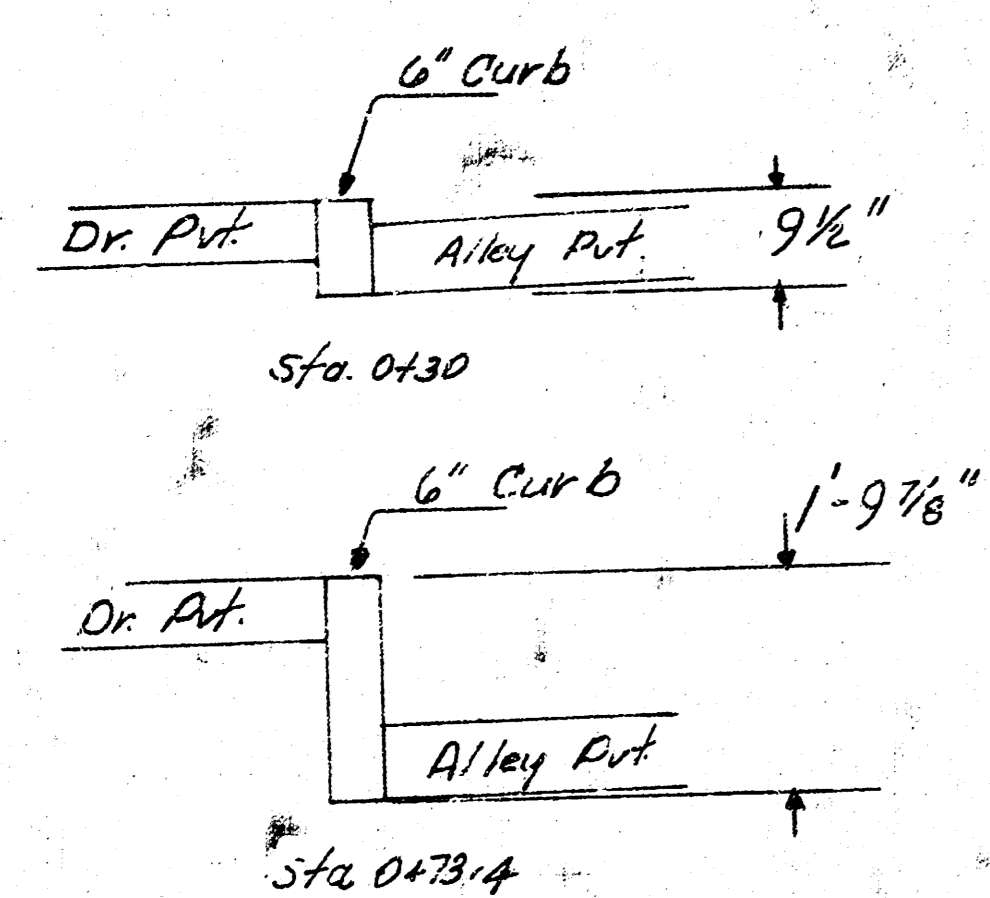
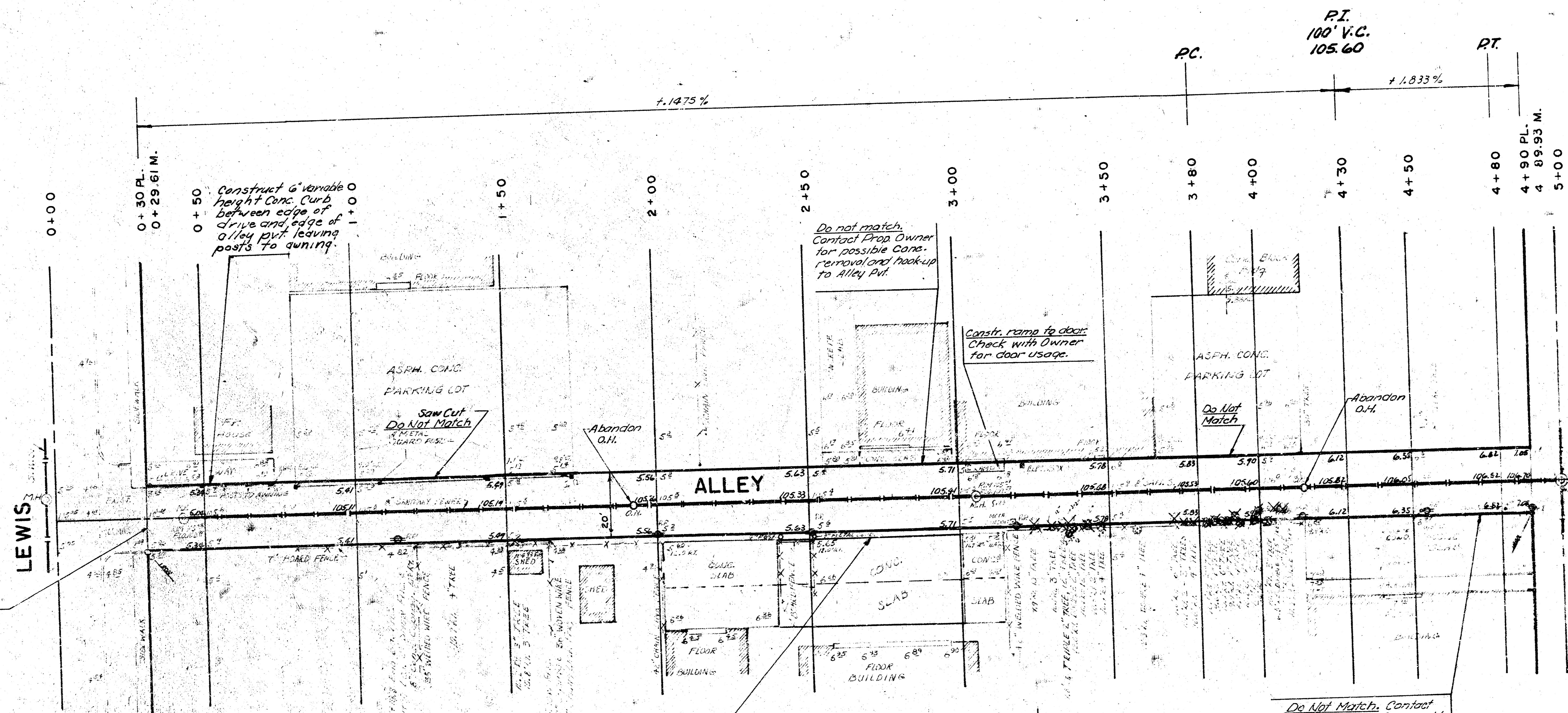




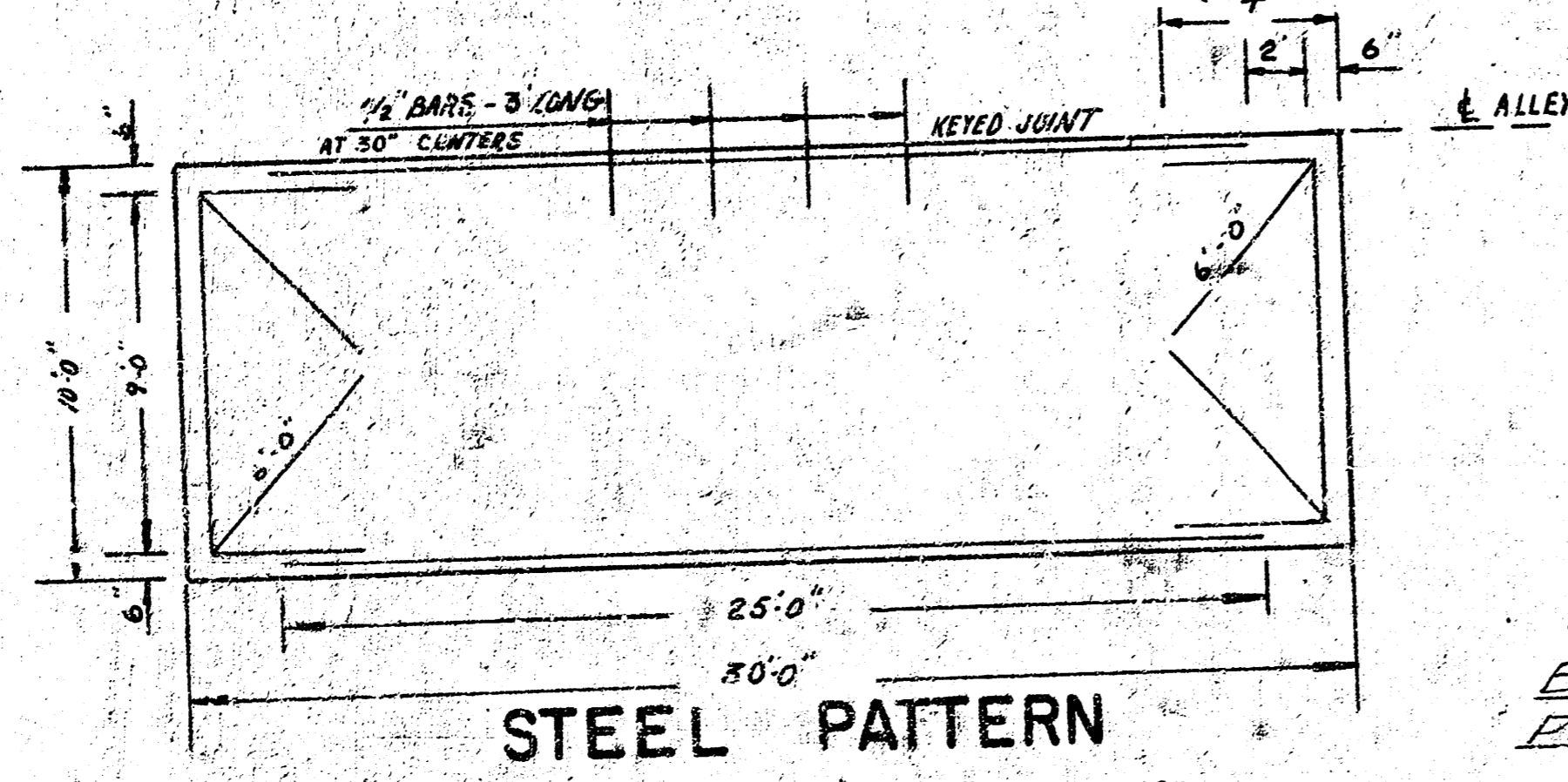
SCALE 1" = 20'

- B.M. 104.94 IRON IN THIMBLE @ LEWIS E. & ELLIS S.
- B.M. 105.44 R.R. SPIKE N. SIDE OF P.P. S. SIDE OF LEWIS, MIDWAY BETWEEN LULU & ELLIS.
- B.M. 107.65 R.R. SPIKE W. SIDE OF P.P. E. LINE OF ALLEY SO. & SO. LINE OF ALLEY E. & W., SO. OF WATERMAN BETWEEN LULU & ELLIS.

Base line is $\frac{1}{2}$ of Alley



Retaining Curb Detail
Sta 0+30 to Sta 0+73.4
W.S. ALLEY

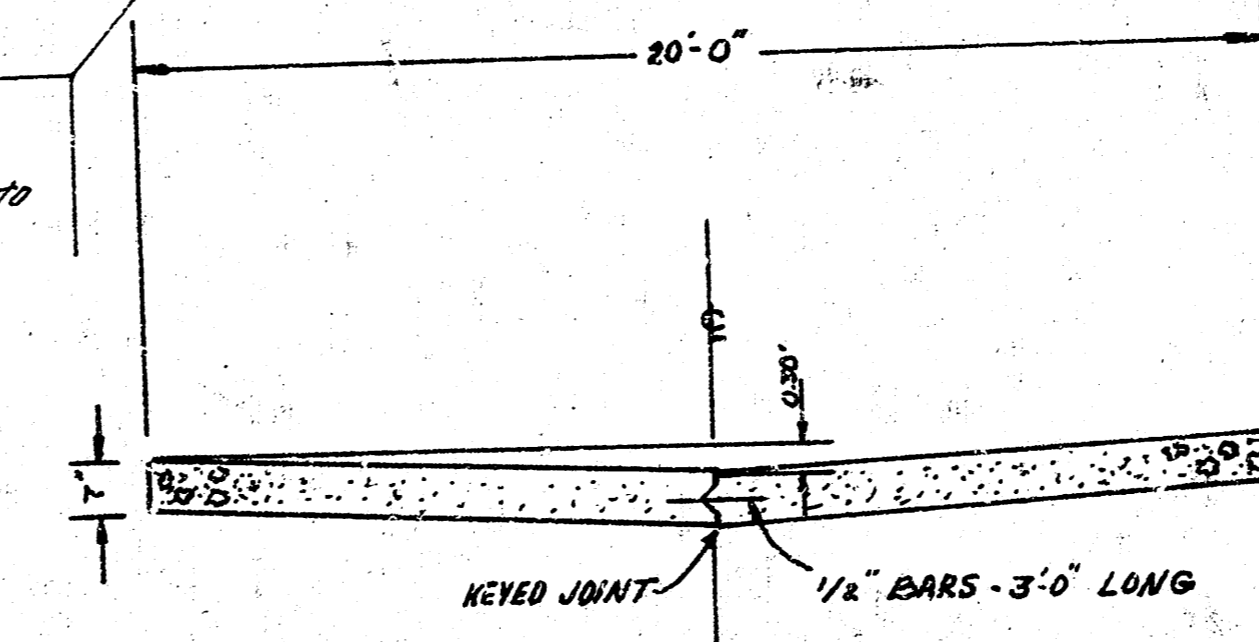


ALL REINFORCING STEEL TO BE NO. 6 BARS EXCEPT DOWEL BARS

EARTHWORK QUANTITIES

PROPERTY	CITY
249.8 Cu. Yd.	0
+10% 24.9 Cu. Yd.	0
274.3 Cu. Yd.	

TYPICAL SECTION



MANIPULATION (CALC.)

PROPERTY	CITY
1022 Cu. Yd.	0

Note: Contractor to coordinate contract with sanitary sewer reconstruction before pavement.

Tree Removal. (Tree removal at Field Engineer's discretion.)

'ALLEY' BETWEEN LULU & ELLIS, N.L. LEWIS TO S.L. ALLEY, SOUTH OF WATERMAN.
 20' - 7" CONCRETE
CITY OF WICHITA, KANSAS
 R.W. BRUGGEMAN - CITY ENGINEER
 PROJ. NO.: 472-76-245-80291-000-700-001
 DATE

FILMED FROM THE BEST AVAILABLE COPY.....