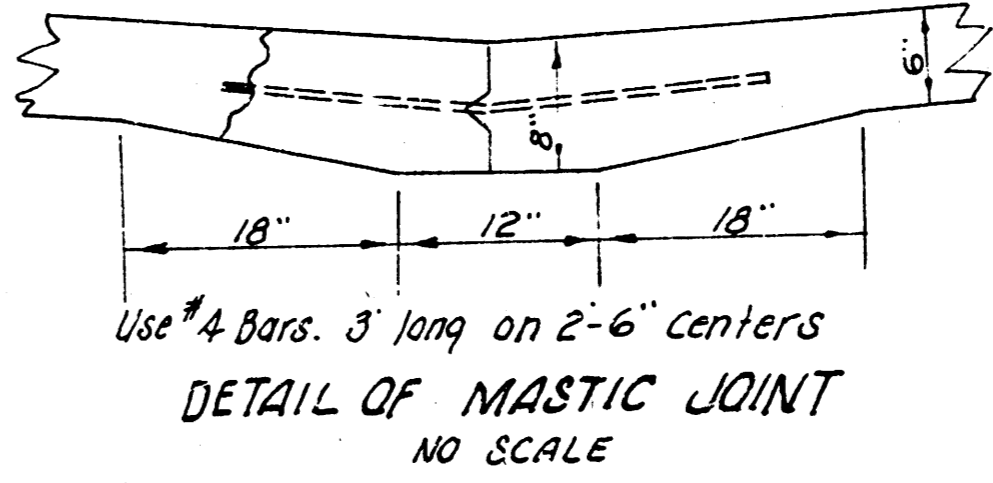
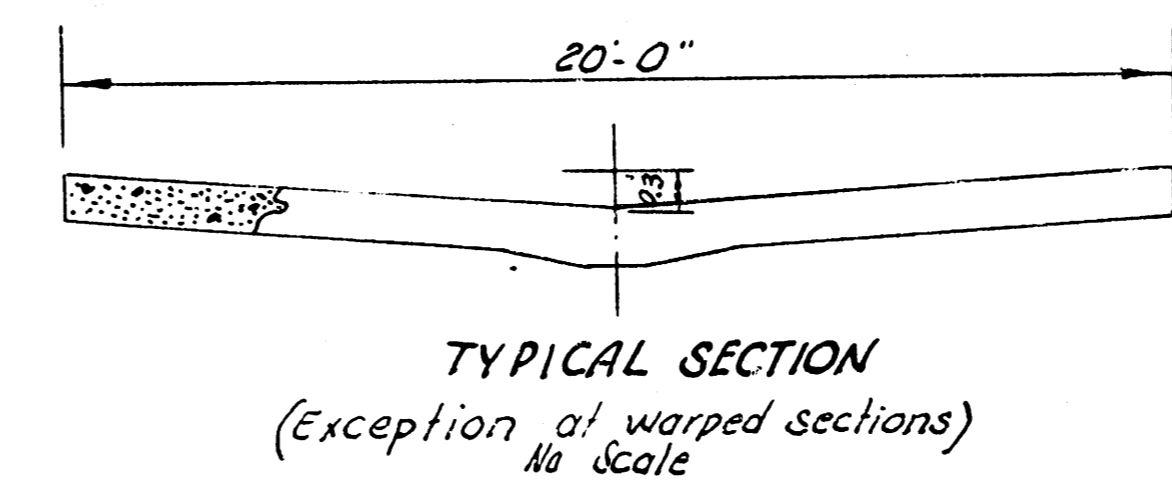
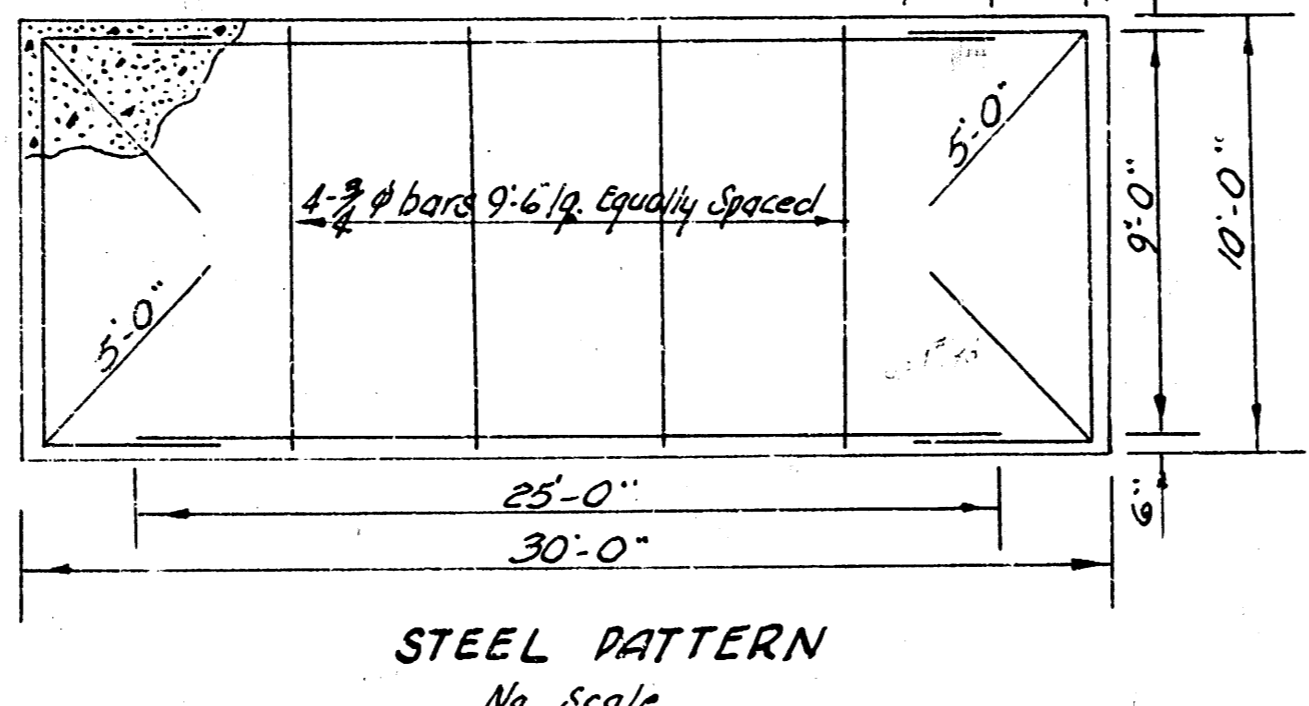
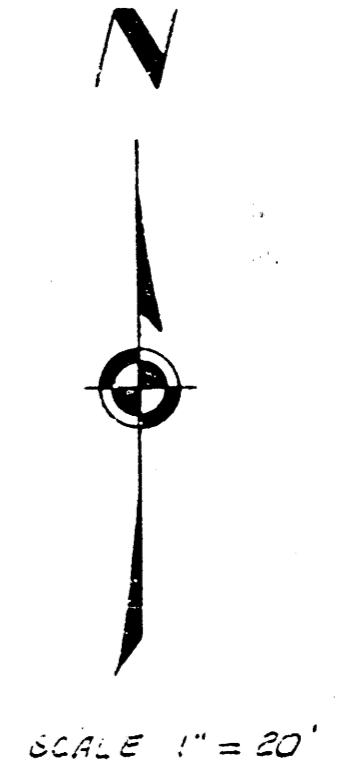
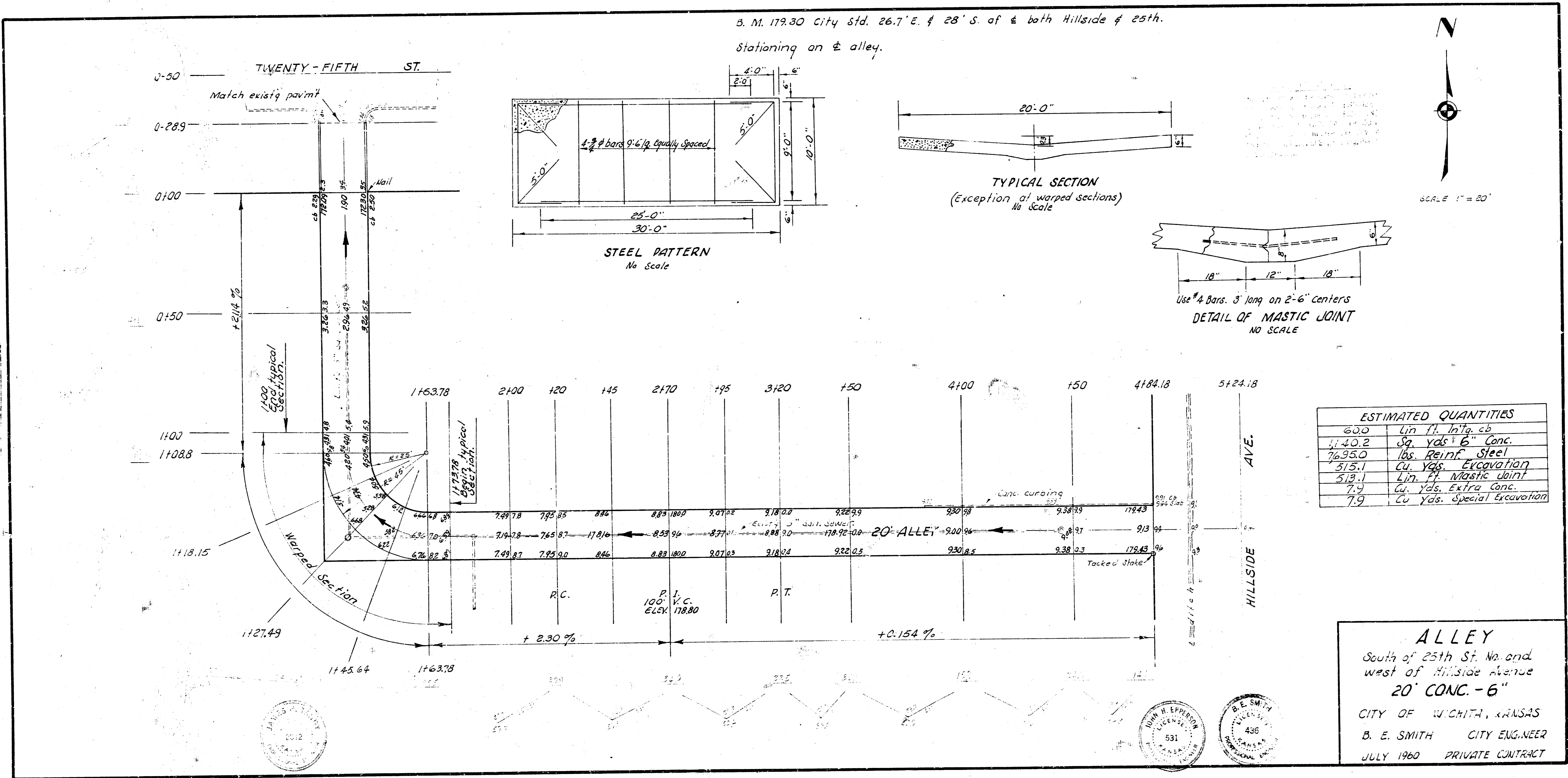


S. M. 179.30 City Std. 26.7' E. & 28' S. of E both Hillside & 25th.
 Stationing on E alley.



ESTIMATED QUANTITIES	
600	Lin Ft. 1 1/2" cb
1140.2	Sq. Yds 6" Conc.
7695.0	Lbs. Reinf. Steel
515.1	Cu. Yds. Excavation
513.1	Lin. Ft. Mastic Joint
7.9	Cu. Yds. Extra Conc.
7.9	Cu. Yds. Special Excavation

ALLEY
 South of 25th St. No. and
 west of Hillside Avenue
20' CONC.-6"
 CITY OF WICHITA, KANSAS
 B. E. SMITH CITY ENGINEER
 JULY 1960 PRIVATE CONTRACT

P. E. Smith, P.E.
 11/11/60

