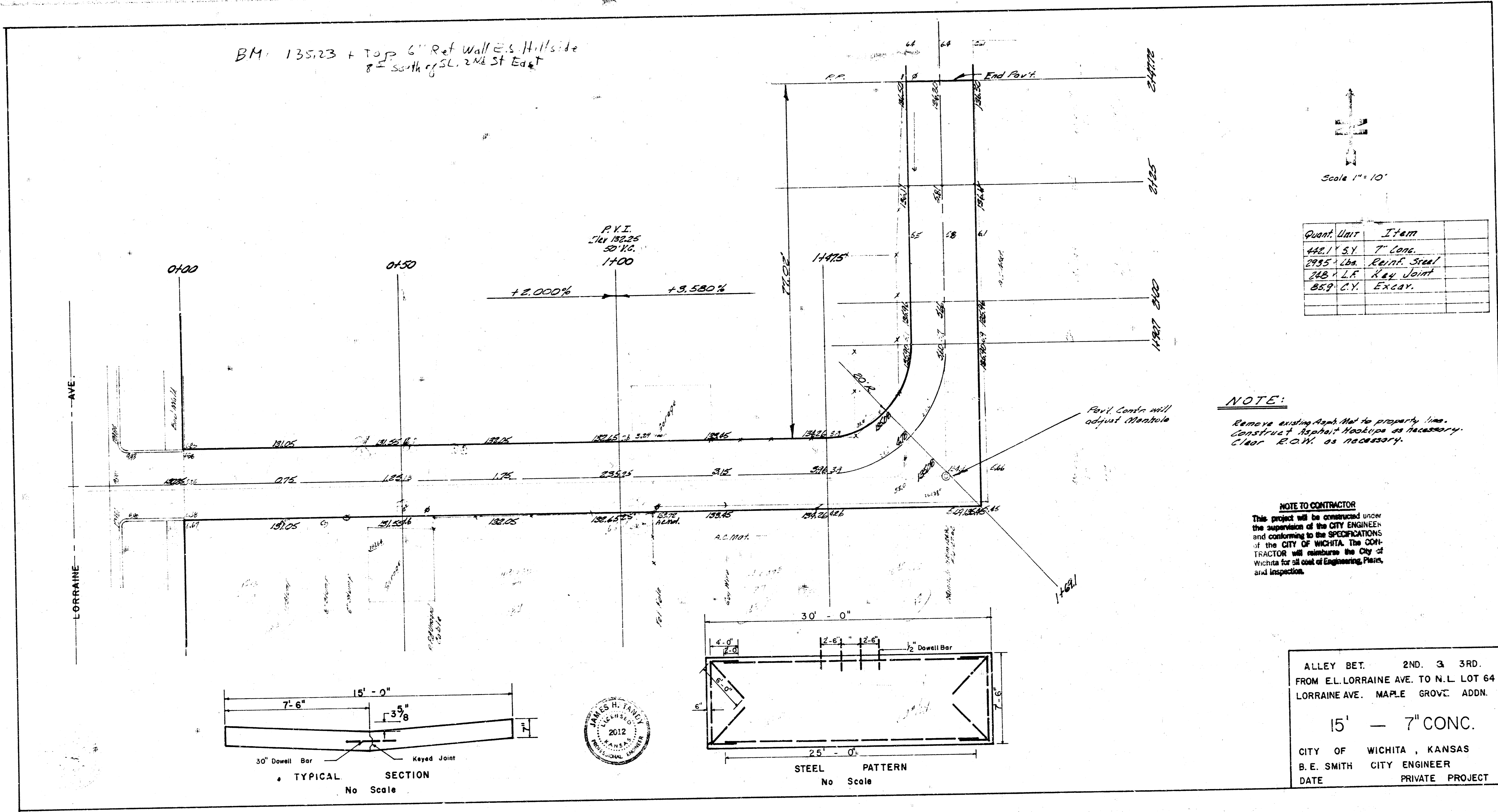


Surveyed January 26, 1927  
 City of Wichita, Kansas  
 City Engineer

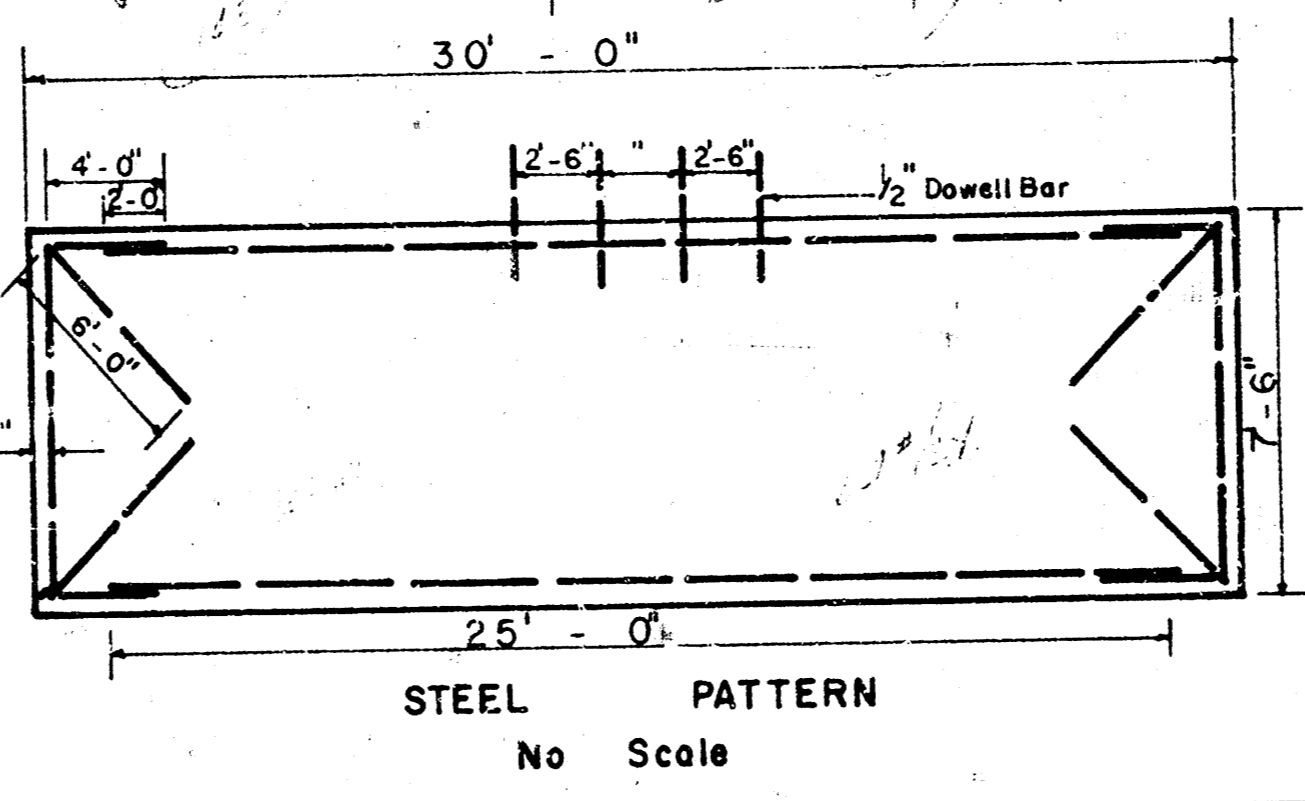
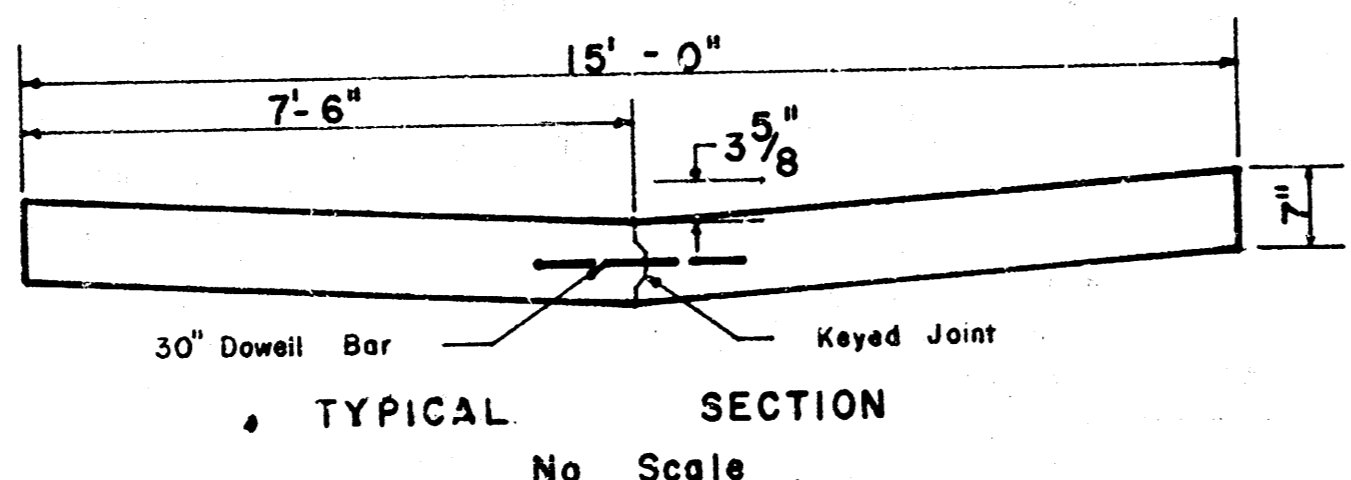
BM 135.23 + Top 6" Ret Wall @ S. Hillside  
 8' South of SL. 2nd St East



Quant.	Unit	Item
442.17	S.Y.	T. Conc.
2455	Lbs.	Reinf. Steel
248	L.A.	Key Joint
85.9	C.Y.	Excav.

**NOTE:**  
 Remove existing Reinf. Mat to property line.  
 Construct Reinf. Mat as necessary.  
 Clear E.O.M. as necessary.

**NOTE TO CONTRACTOR**  
 This project will be constructed under the supervision of the CITY ENGINEER and conforming to the SPECIFICATIONS of the CITY OF WICHITA. The CONTRACTOR will reimburse the City of Wichita for all cost of Engineering, Plans, and Inspection.



ALLEY BET. 2ND. & 3RD.  
 FROM EL. LORRAINE AVE. TO N.L. LOT 64  
 LORRAINE AVE. MAPLE GROVE ADDN.  
 15' - 7" CONC.  
 CITY OF WICHITA, KANSAS  
 B.E. SMITH CITY ENGINEER  
 DATE PRIVATE PROJECT