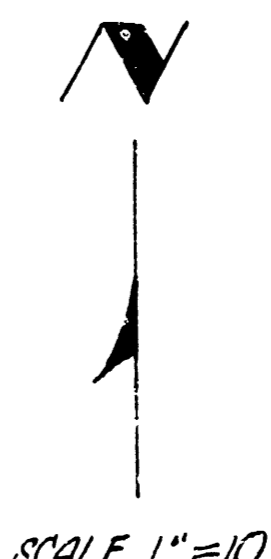
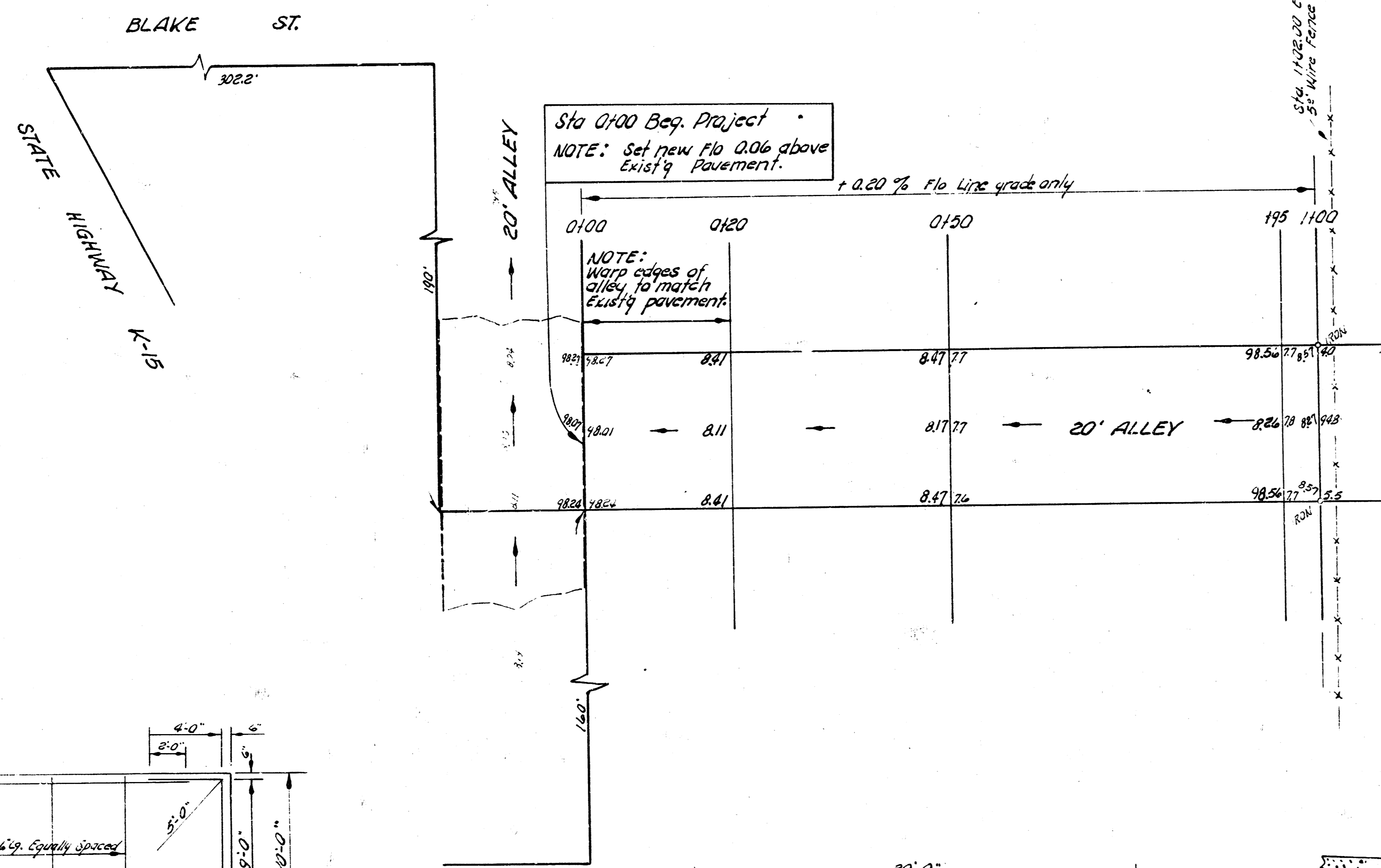


3. M. 100.01 NE Cor. Conc. base Pawnee Villa Sign 135' W. of WL Alley N.L. Pawnee.
 3. M. 98.04 "P" in P.K.S. E. of Alley E of K-15 SL Blake.
 B. M. 96.03 "P" in P.K.S. E. of Minnesota N.L. Blake.



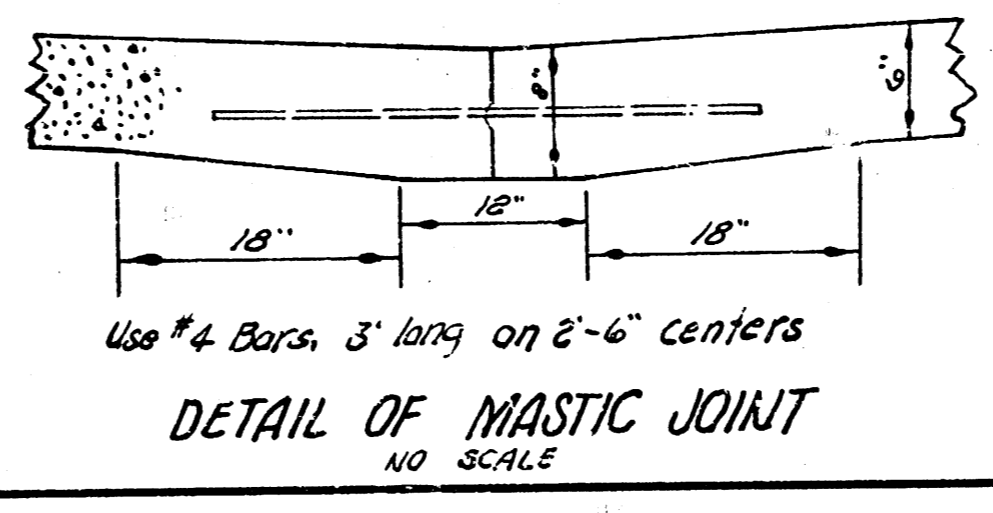
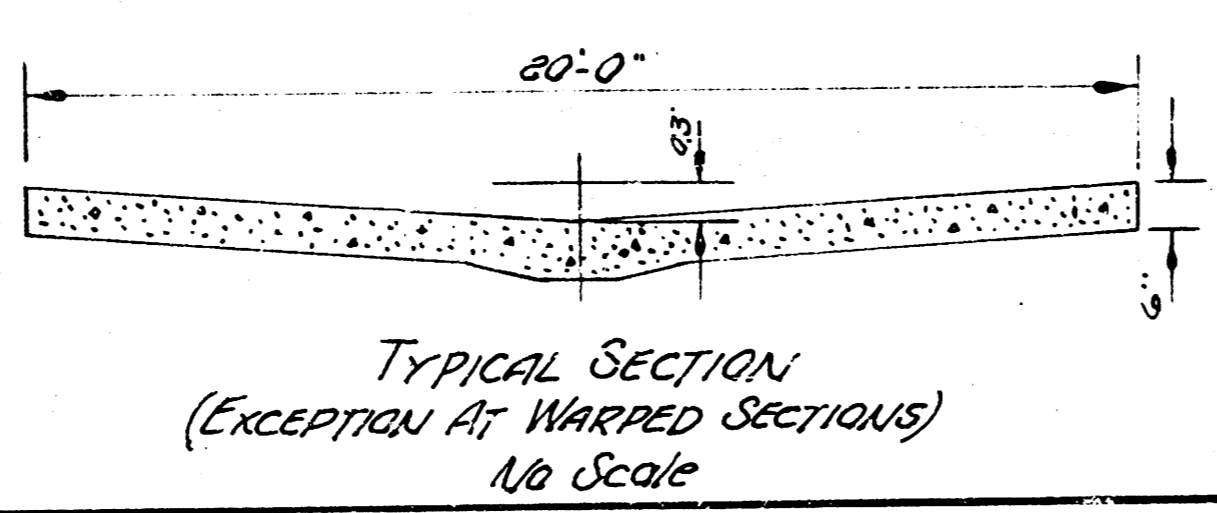
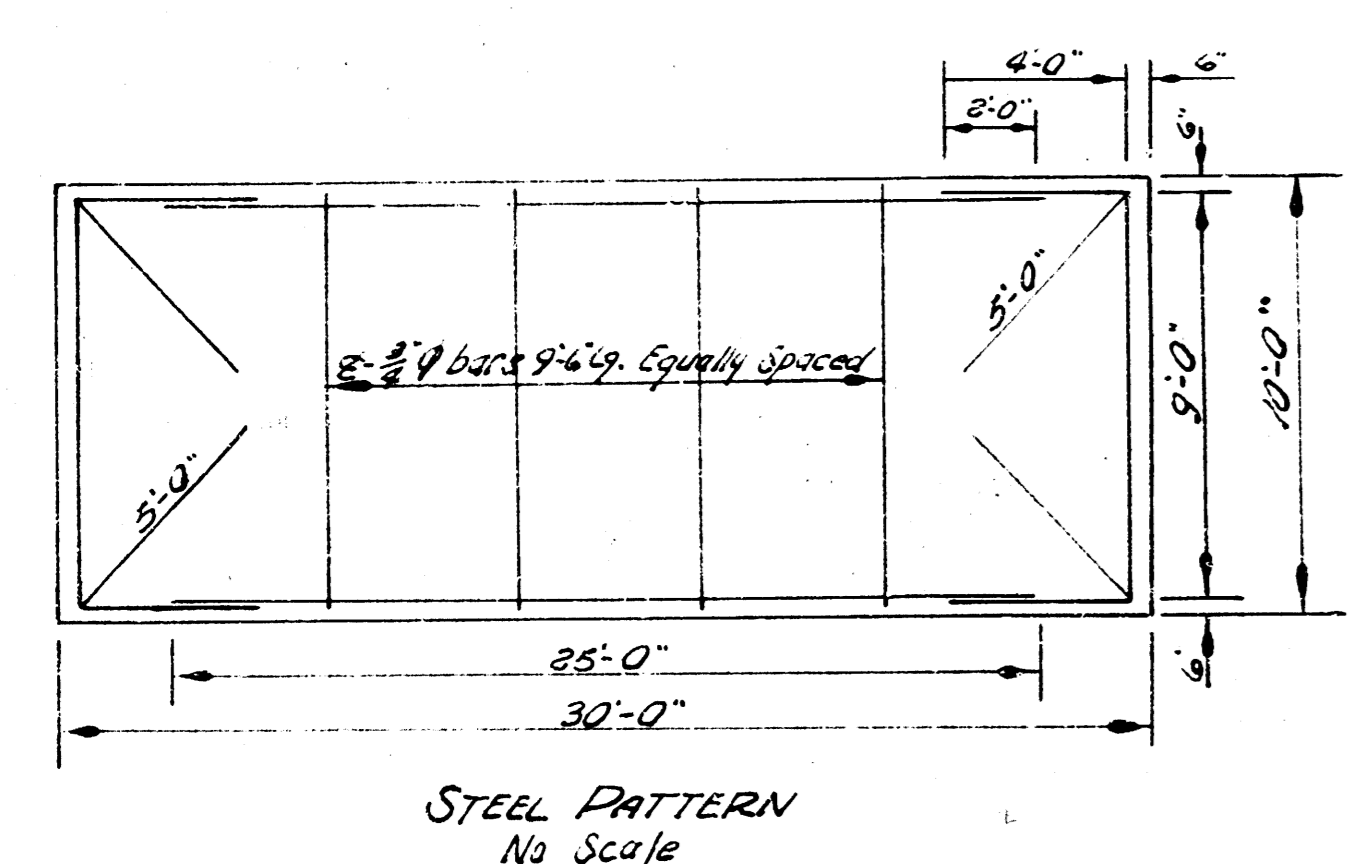
SCALE 1"=10'



NOTE TO CONTRACTOR
 The plan and section shown on this drawing are for the City of Wichita and are subject to the City Engineer's approval. The City Engineer will reimburse the City of Wichita for all cost of Engineering, Plans and Inspection.

ESTIMATED QUANTITIES		
95	100	
211	222	Sq. Yds. 6" Conc.
1424	1499	Lbs. of Reinf. Steel
10	10	Cu. Yds. Excavation
4	15	Cu. Yds. Fill-Compaction
95	100	Lin. Ft. of Mastic Joint

C.H.M. L.C.M. J.W. J.H.



ALLEY
 EAST OF STATE HIGHWAY K-15
 &
 NORTH OF PAWNEE
 EL ALLEY SO. OF BLAKE TO 100' E.
 20' CONC. 6"
 CITY OF WICHITA KANSAS
 B. E. SMITH CITY ENGINEER
 JAN. 1958 - PRIVATE CONTRACT

1/2