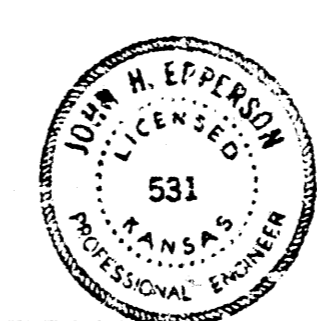
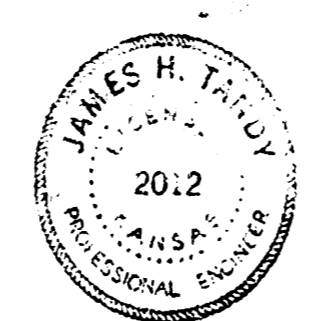
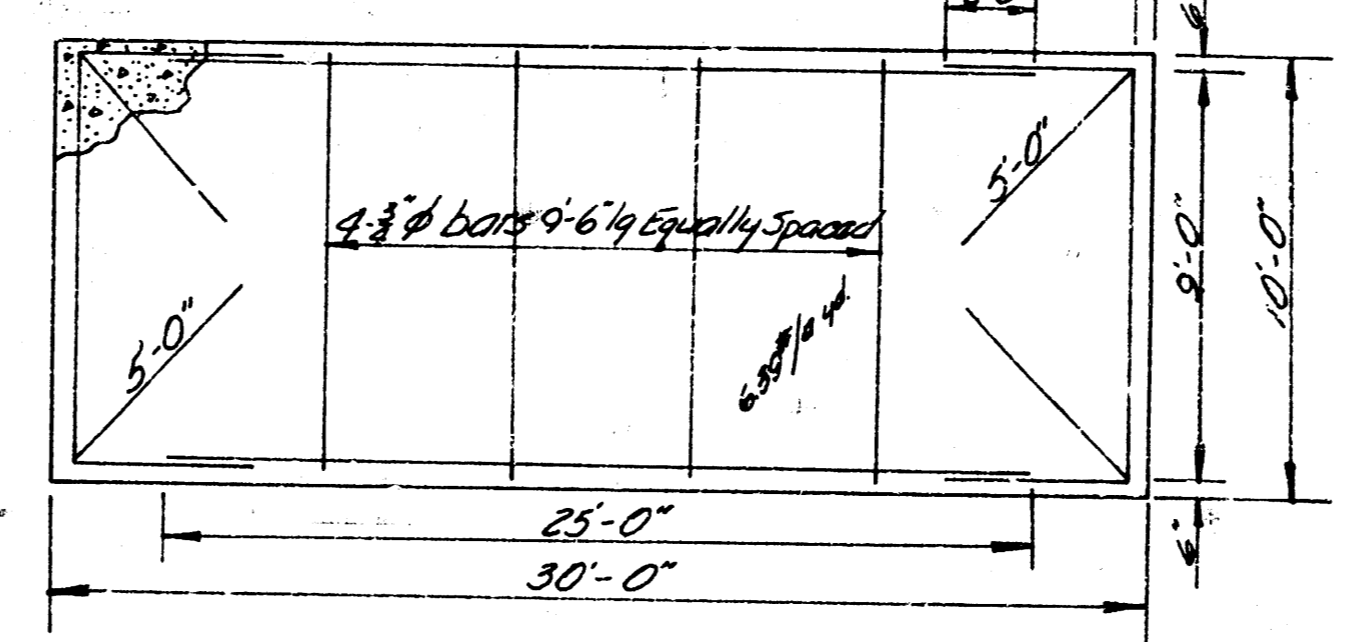
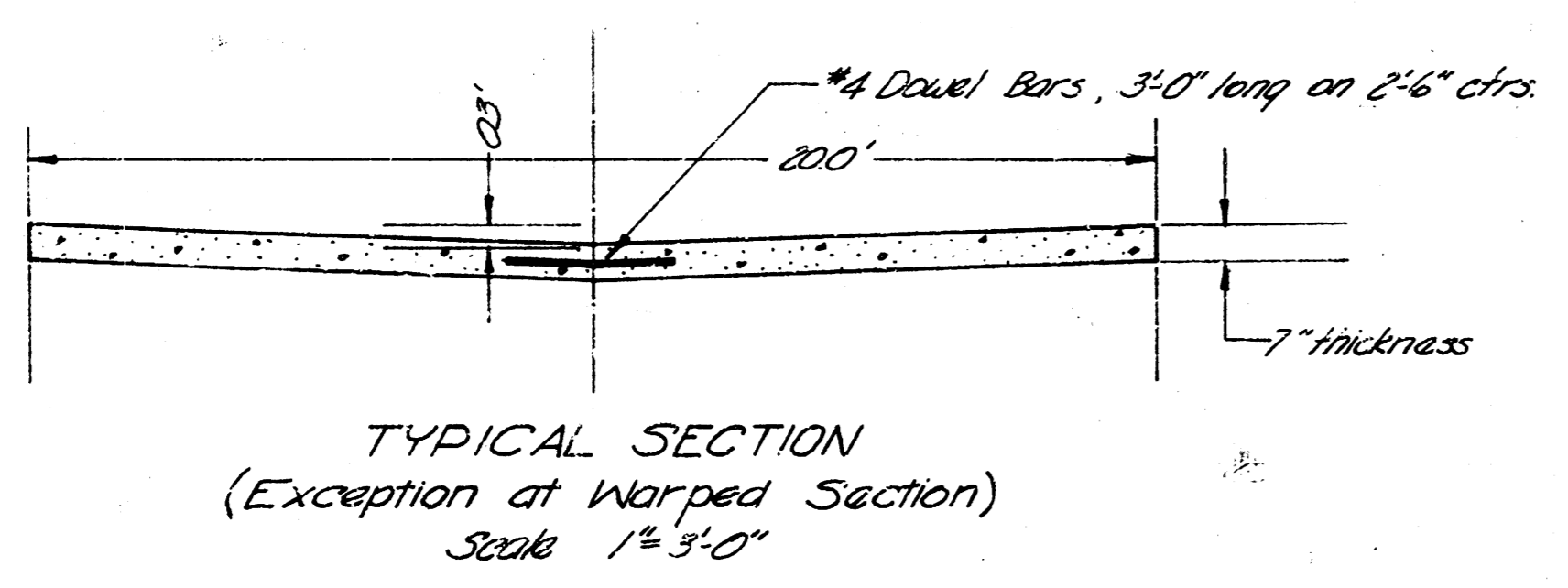
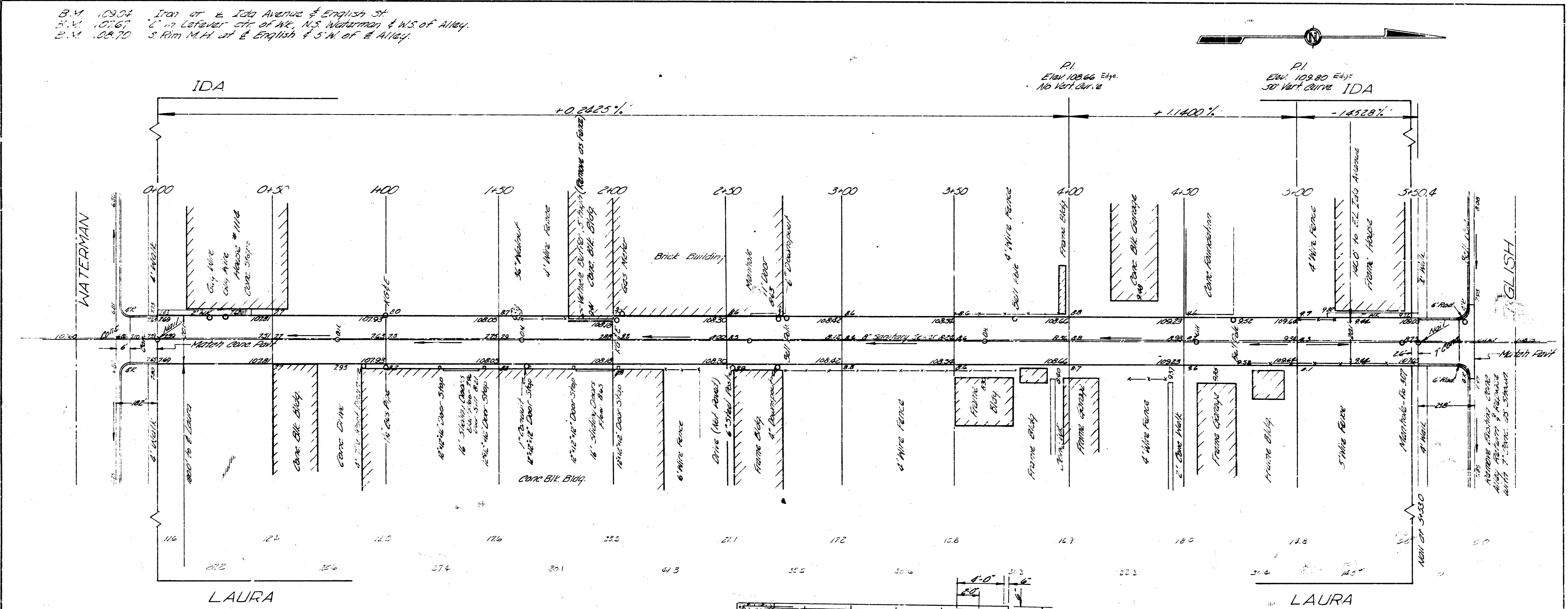


B.M. 10304 Iron at W. 10th Avenue & English St.
 B.M. 10367 2" in. Lathier at W. N.S. Waterman & W.S. of Alley.
 B.M. 10370 3" Rim M.H. at E. English & S.W. of E. Alley.



Excavation
 Property 3538
 365
 3577 2/4

ALLEY
 BETWEEN IDA & LAURA
 N.L. WATERMAN — S.L. ENGLISH
20' CONC. — 7"
 CITY OF WICHITA, KANSAS
 J.E. SMITH CITY ENGINEER
 DATE: SEPT. 1953, PROJ. C19-108