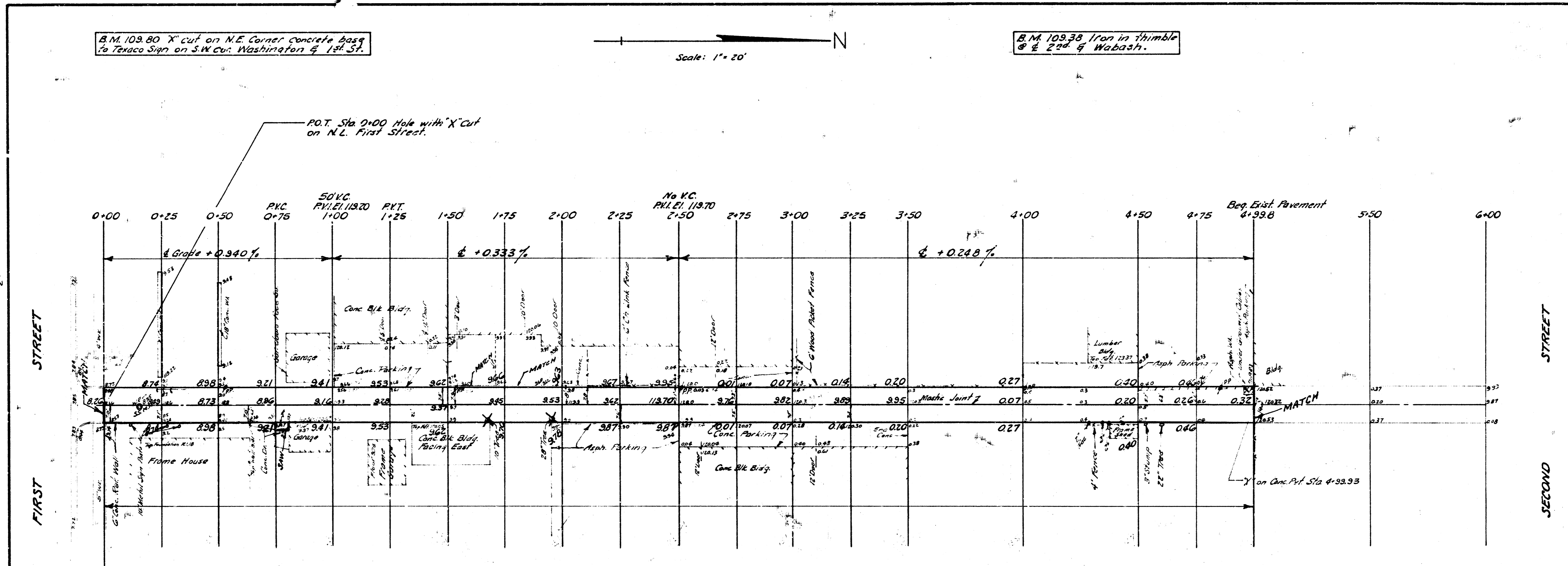


B.M. 109.80 'X' cut on N.E. Corner concrete base to Texaco Sign on S.W. Cor. Washington & 1st St.

B.M. 109.38 Iron in thimble @ E 2nd & Wabash.

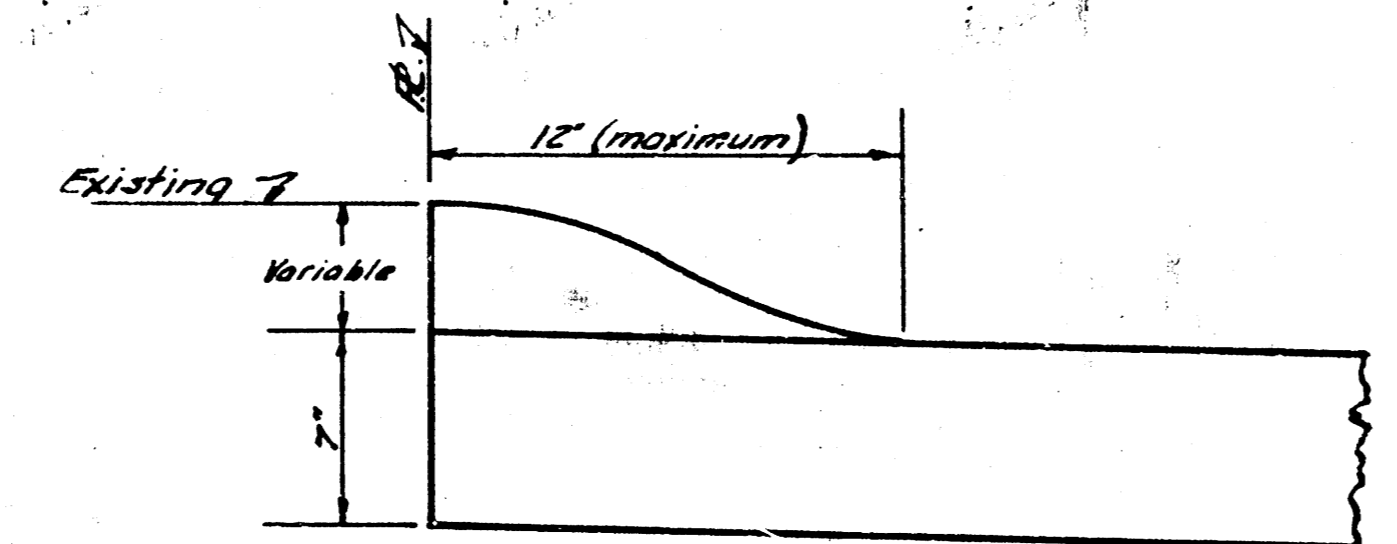
Scale: 1" = 20'

Shown 1/16
Plan 1/16
Exc
Checked

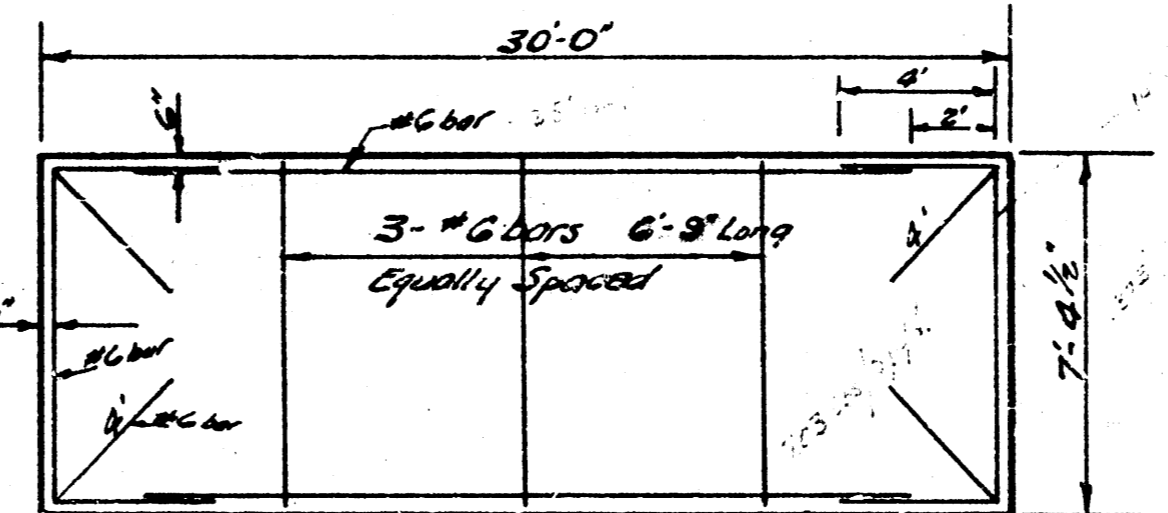
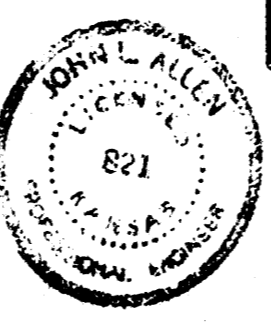


EXCAVATION

	231 Cu.Yds.
+10%	23
Total	254 Cu.Yds.



Where necessary use the above detail to match existing concrete & Property Line. Non-Pay Item. Incidental to Pavement.
No Scale



REINF. STEEL PATTERN

**ALLEY - Between
WASHINGTON & WABASH from
N.L. 1st St. to 100 S. of S.L. 2nd
14.75' - 7" CONC.
B.E. SMITH CITY ENGINEER
CITY OF WICHITA KANSAS
Date: SEPT 1950
Project No. C16-45**