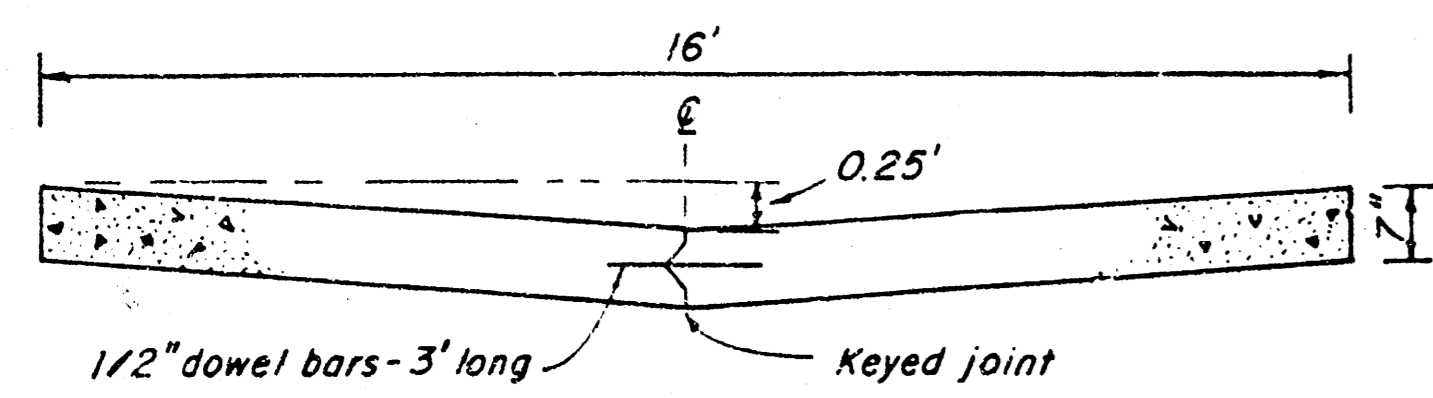
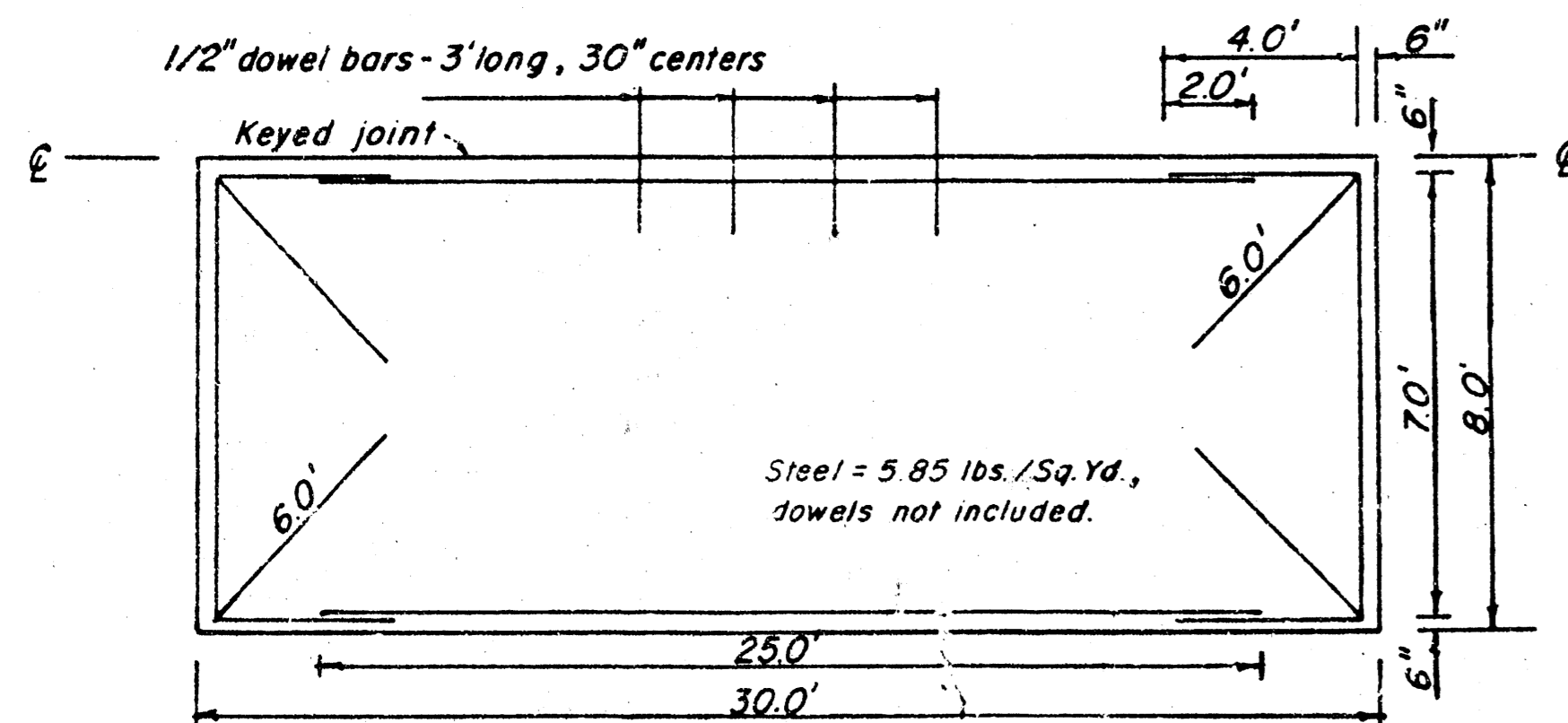


ALLEY PAVEMENT  
DETAIL

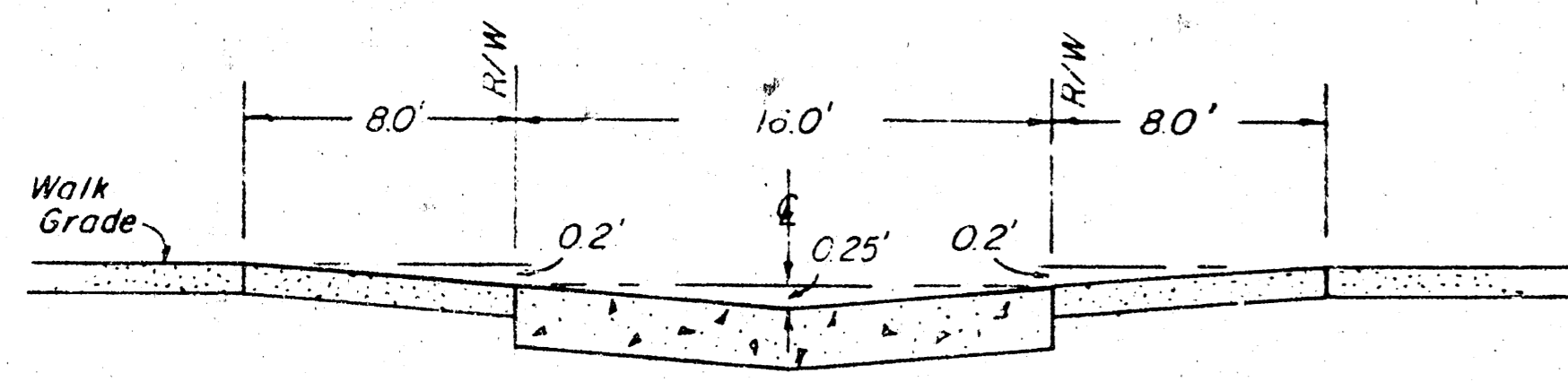


TYPICAL SECTION  
Not To Scale



STEEL PATTERN

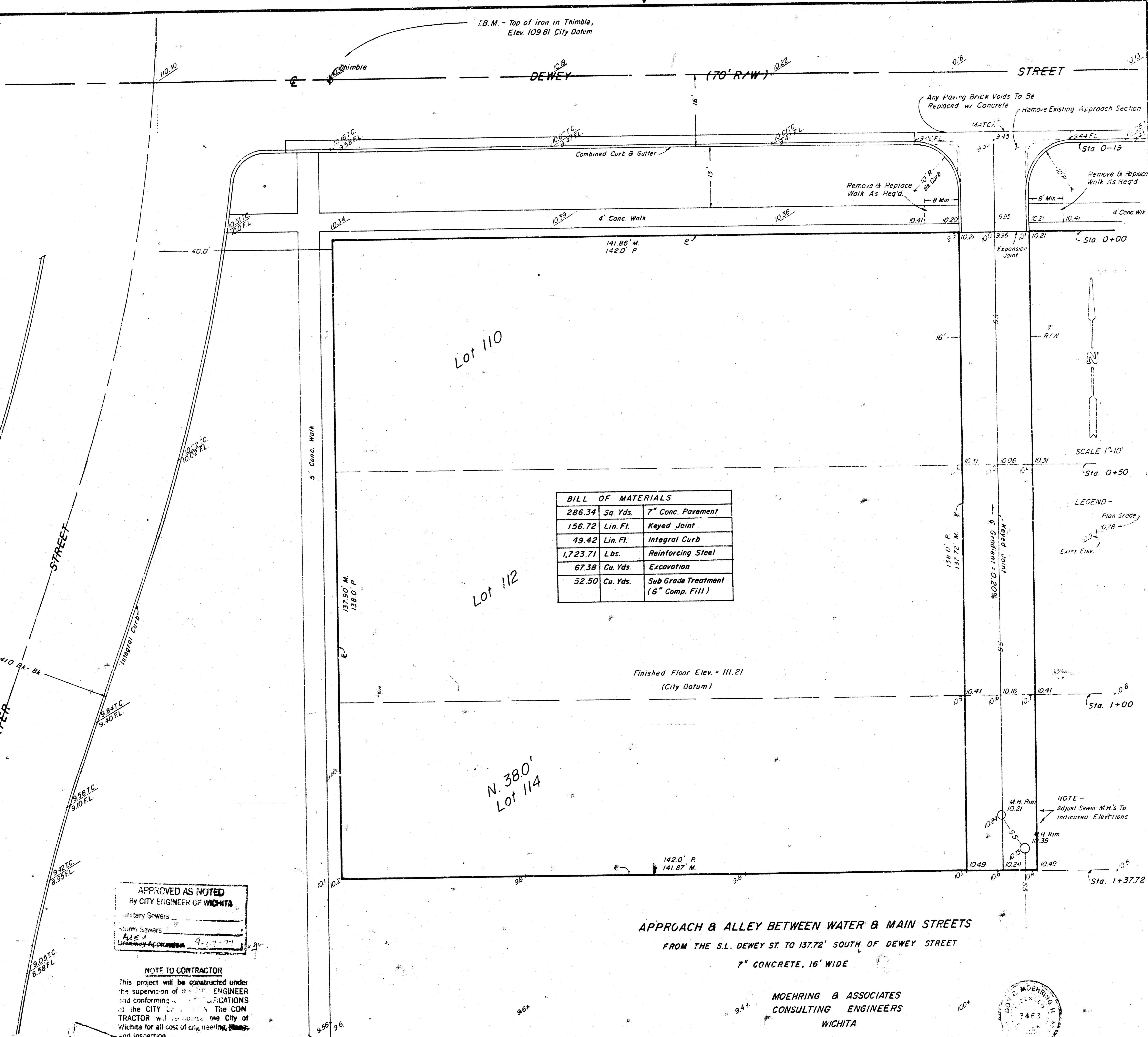
NOTE - All reinforcing steel to be #6 bars, except dowel bars.



ALLEY APPROACH

Section At Property Line (Not To Scale)

F.B.M. - Top of iron in Thimble,  
Elev. 109.81 City Datum



BILL OF MATERIALS		
286.34	Sq. Yds.	7" Conc. Pavement
156.72	Lin. Ft.	Keyed Joint
49.42	Lin. Ft.	Integral Curb
1,723.71	Lbs.	Reinforcing Steel
67.38	Cu. Yds.	Excavation
52.50	Cu. Yds.	Sub Grade Treatment (6" Comp. Fill)

APPROVED AS NOTED  
By CITY ENGINEER OF WICHITA  
Sanitary Sewers  
Storm Sewers  
Date of Approval: 9-11-77

NOTE TO CONTRACTOR  
This project will be constructed under the supervision of the CITY ENGINEER and conforming to the SPECIFICATIONS of the CITY OF WICHITA. The CONTRACTOR will reimburse the City of Wichita for all cost of engineering, plans, and inspection.

APPROACH & ALLEY BETWEEN WATER & MAIN STREETS  
FROM THE S.L. DEWEY ST. TO 137.72' SOUTH OF DEWEY STREET  
7" CONCRETE, 16' WIDE

MOEHRING & ASSOCIATES  
CONSULTING ENGINEERS  
WICHITA  
CITY PRIVATE PROJECT NO. DAKW 707058

