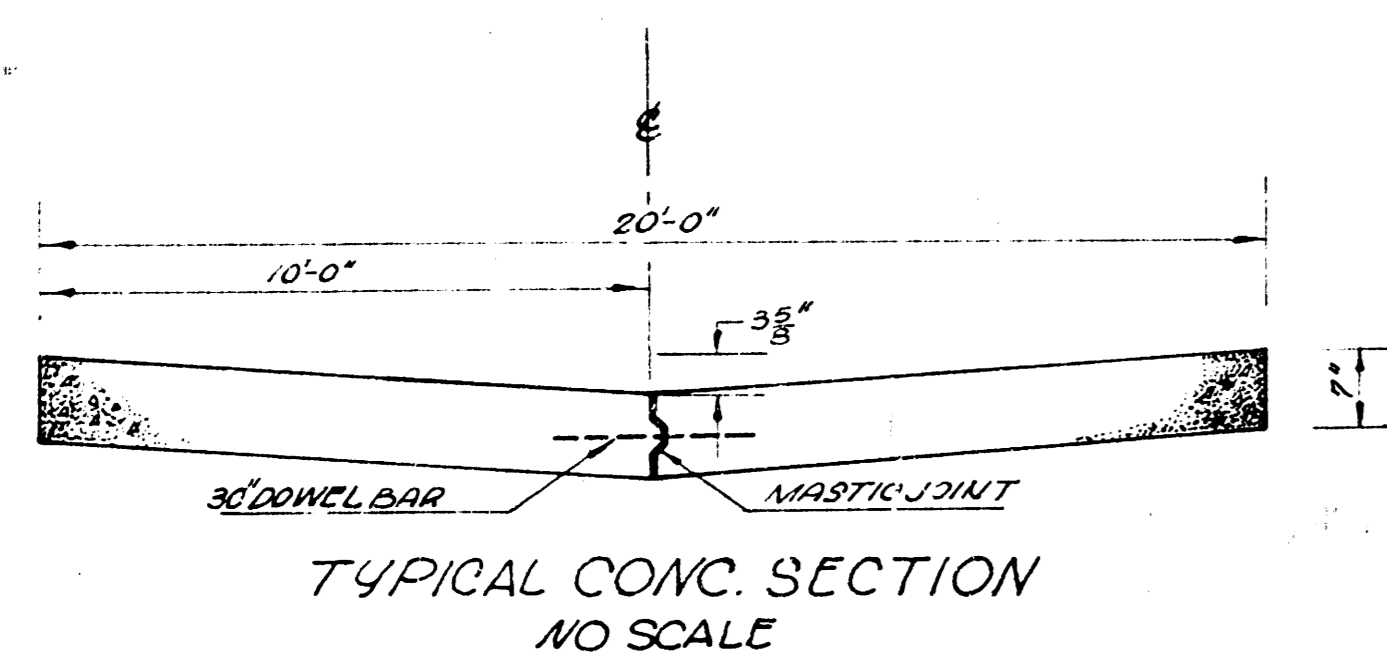
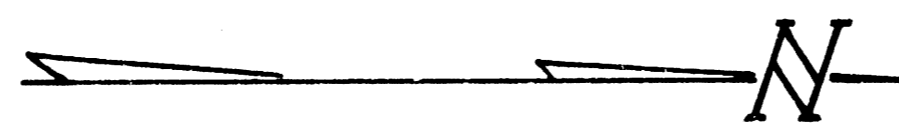
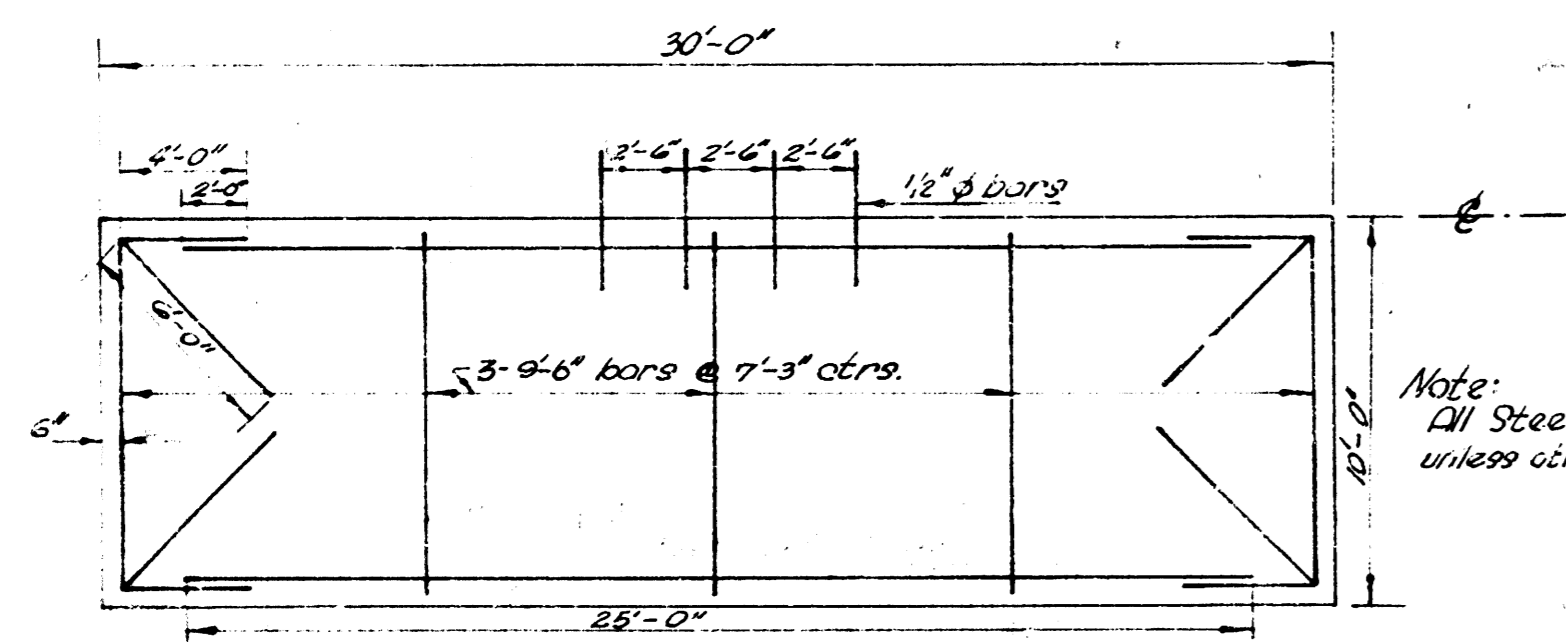


BM. W.C.M.C. Cor. 204 S.W. Corner of Douglas Elev. 112.25



TYPICAL CONC. SECTION
NO SCALE

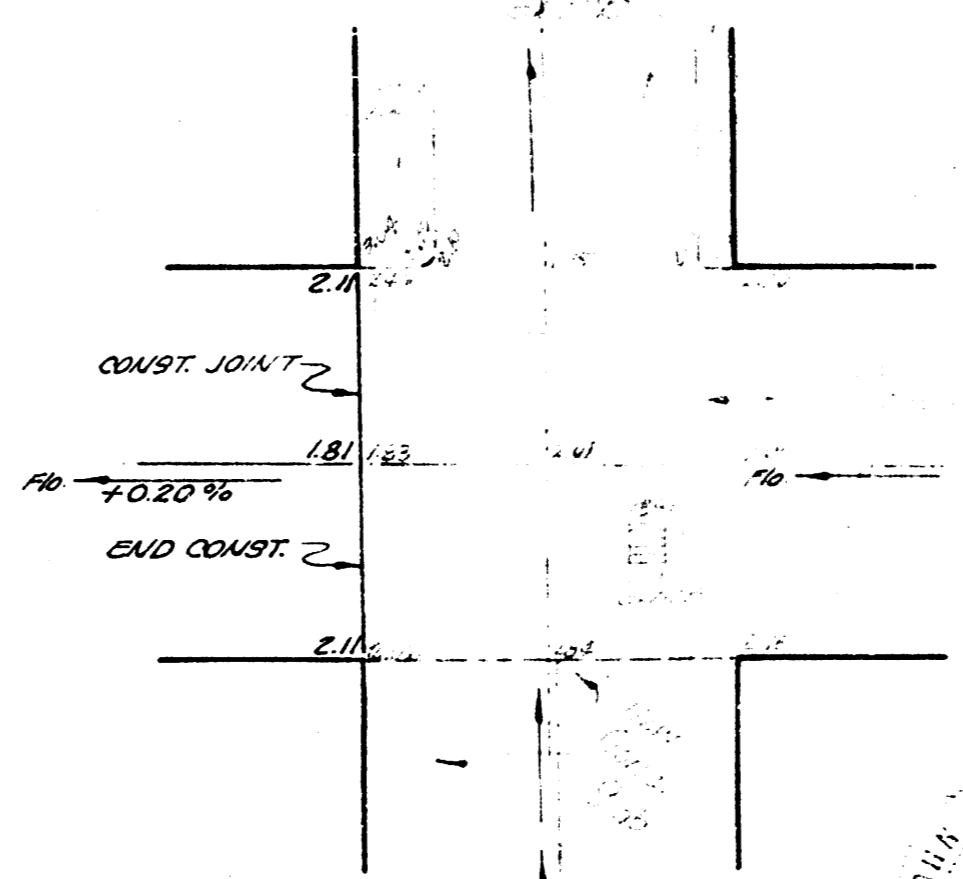
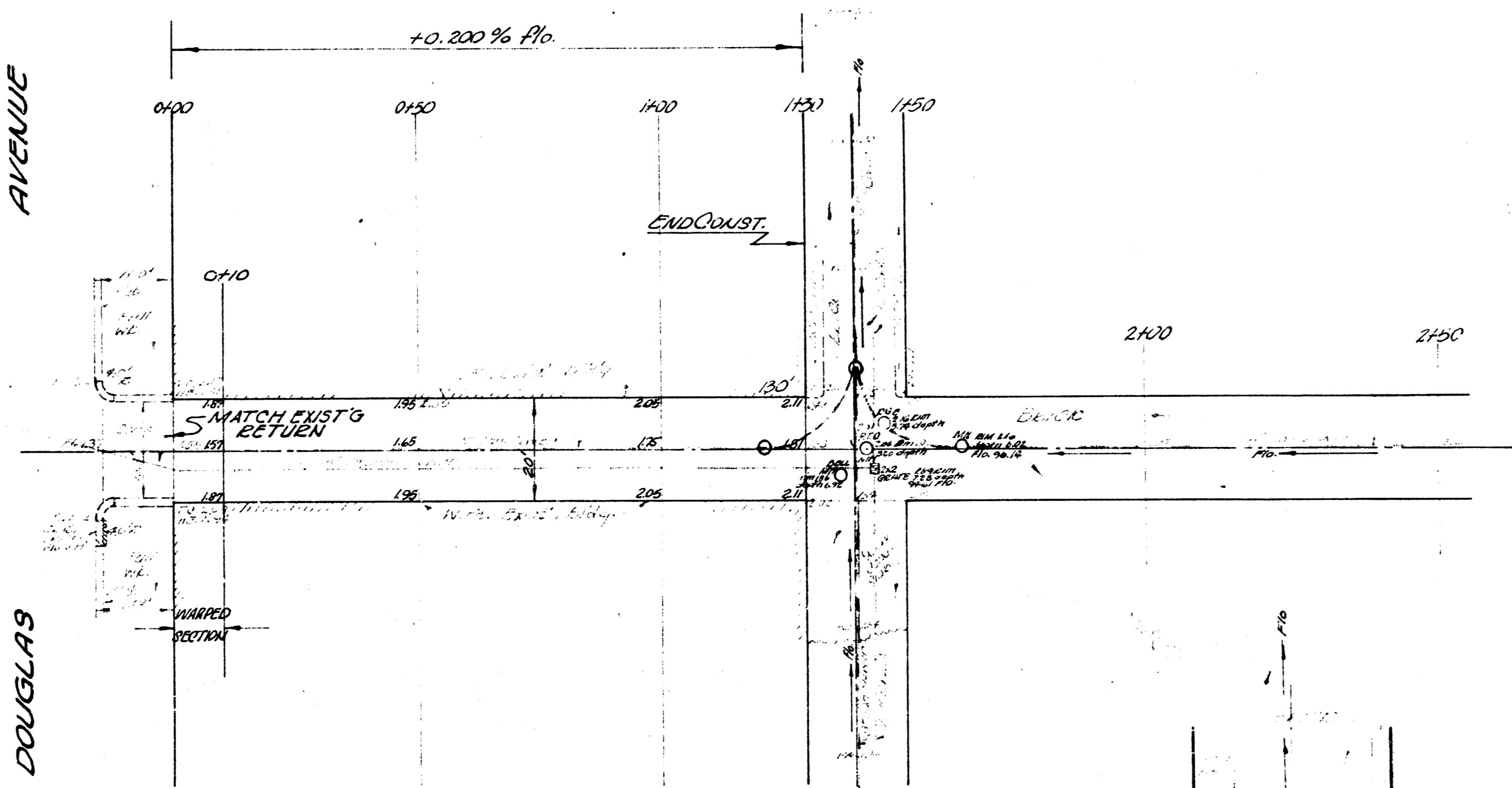


TYPICAL STEEL PATTERN
NO SCALE

Note:
1) Steel to be #4 bar
unless otherwise noted.

AVENUE

DOUGLAS



ALLEY BET. MAIN & WATER
W. Douglas to Alley No. Douglas
7" CONC.
CITY OF WICHITA, KANSAS
B.E. SMITH CITY ENGINEER
OCT. 1957 PRIVATE PROJ.