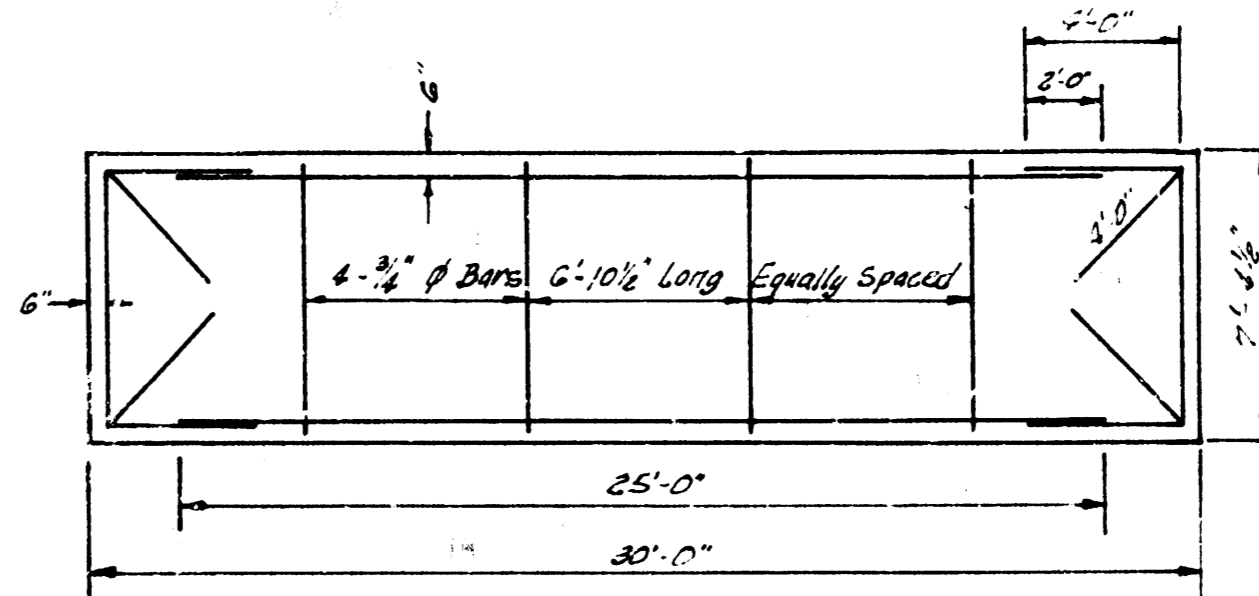
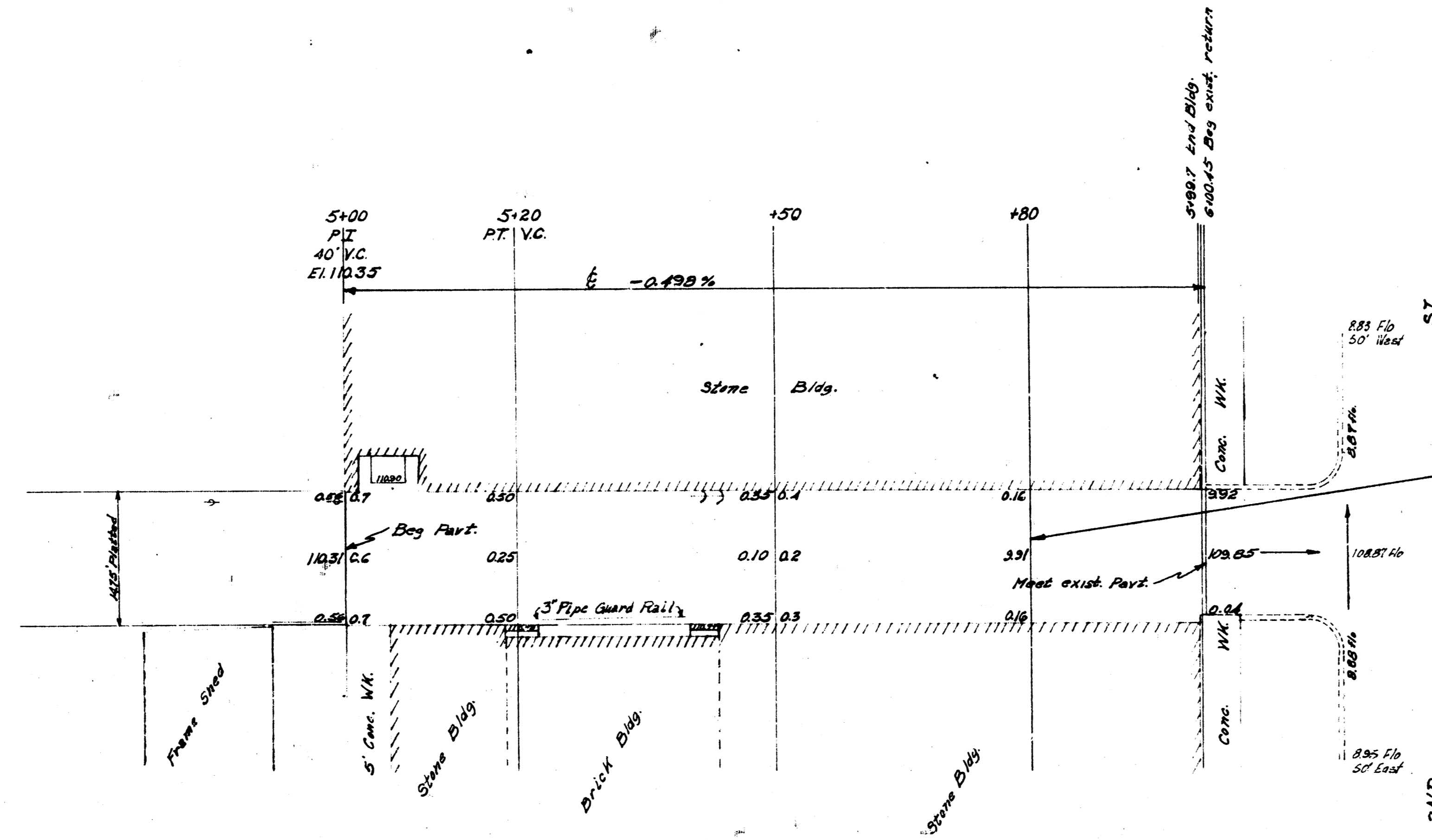
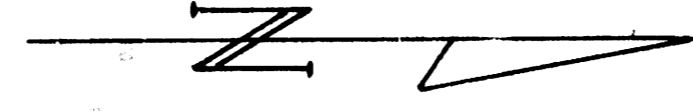
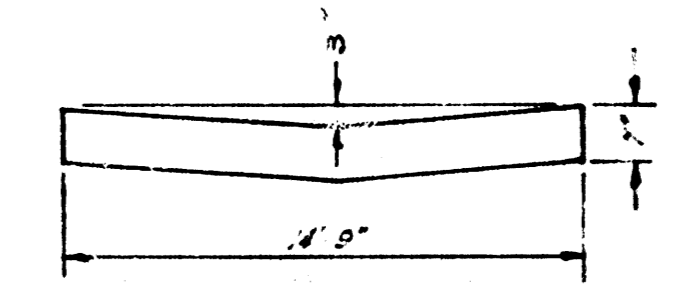


BM's 10777 Iron in thimble, & Wabash & N.L. 1st  
 10818 Iron in thimble, & 2nd & E Washington  
 10340 Iron in thimble, & 2nd & Wabash  
 Stationing on &  
 Sta. 0+00 15'x' in pvt., & Alley & N.L. 1st



STEEL PATTERN  
NOT TO SCALE

NOTE:  
Warp pattern from Sta. 5+80  
to Sta. 6+00.45



TYPICAL SECTION  
FROM STA 5+20 TO STA 5+80  
NOT TO SCALE

Survey J.R. GARDNER, J.G. W.  
 Plans Checked  
 Checked

B.E. SMITH  
 CITY ENGINEER  
 MAY 1955

ALLEY E. OF WASHINGTON  
 100' S. of 2nd to SL 2nd  
 14.75' - 7" Conc.  
 CITY OF WICHITA, KAN.  
 B.E. SMITH CITY ENGINEER  
 MAY 1955 Private Job

