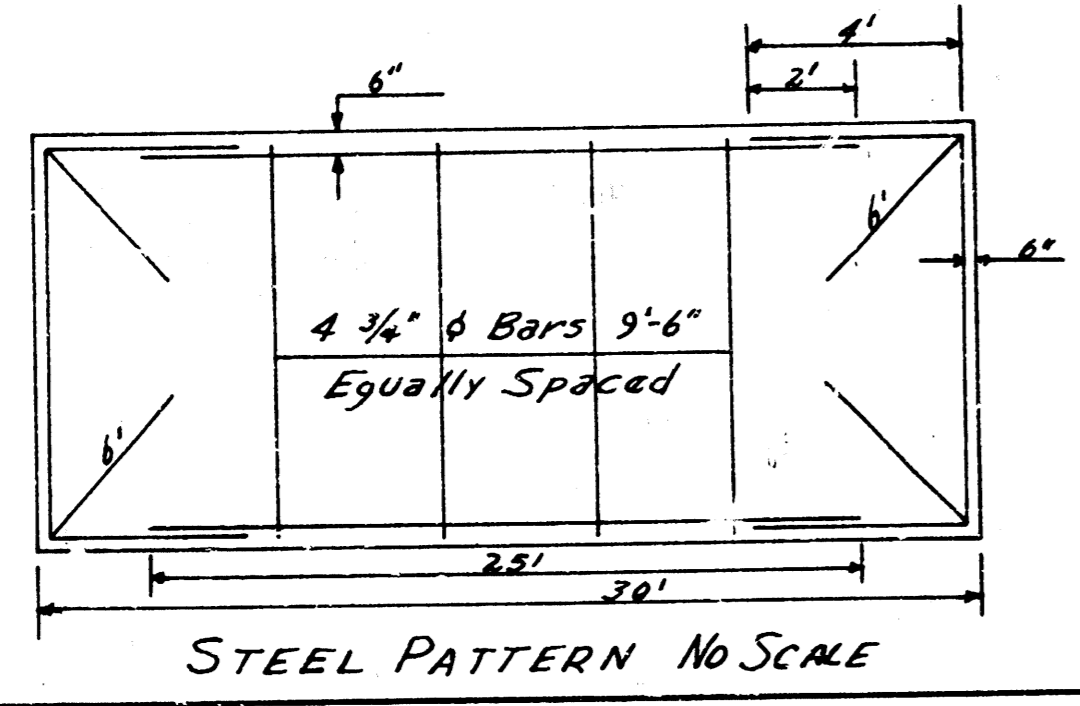
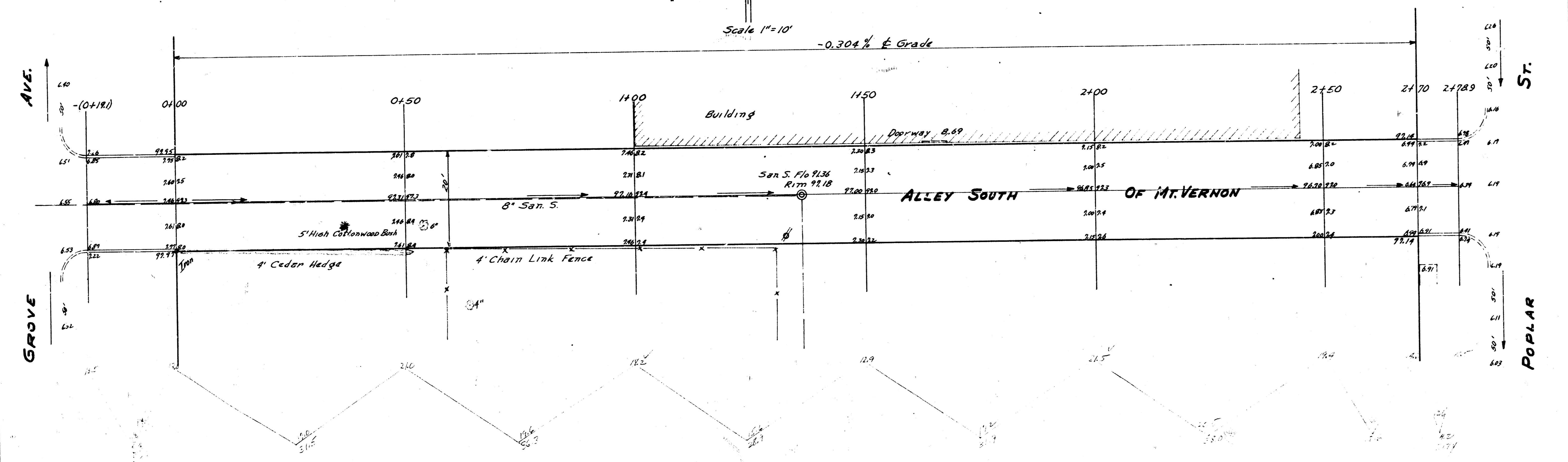


B.M. 97.01 "G" in Globe S. Co. Mt. Vernon & EL Grove  
 Stationing on #

Scale 1"=10'  
 -0.304% ± Grade



PROPERTY  
 1927  
 FILE 12-3  
 1941 CHYDYS CUT  
 1971  
 12-5  
 144-13  
 12-5 CHYDYS CUT



**ALLEY So Of Mt. VERNON**  
 E.L. GROVE To W.L. POPLAR  
 20' CONC. 6" THICK  
 CITY OF WICHITA KAN.  
 B.E. SMITH CITY ENGINEER  
 AUG 1955 Prot. No C15-189