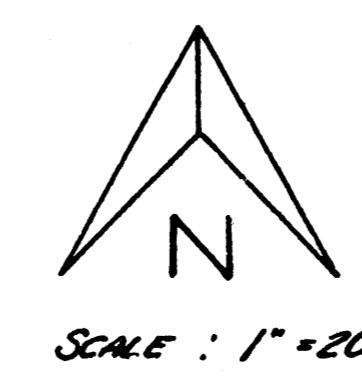


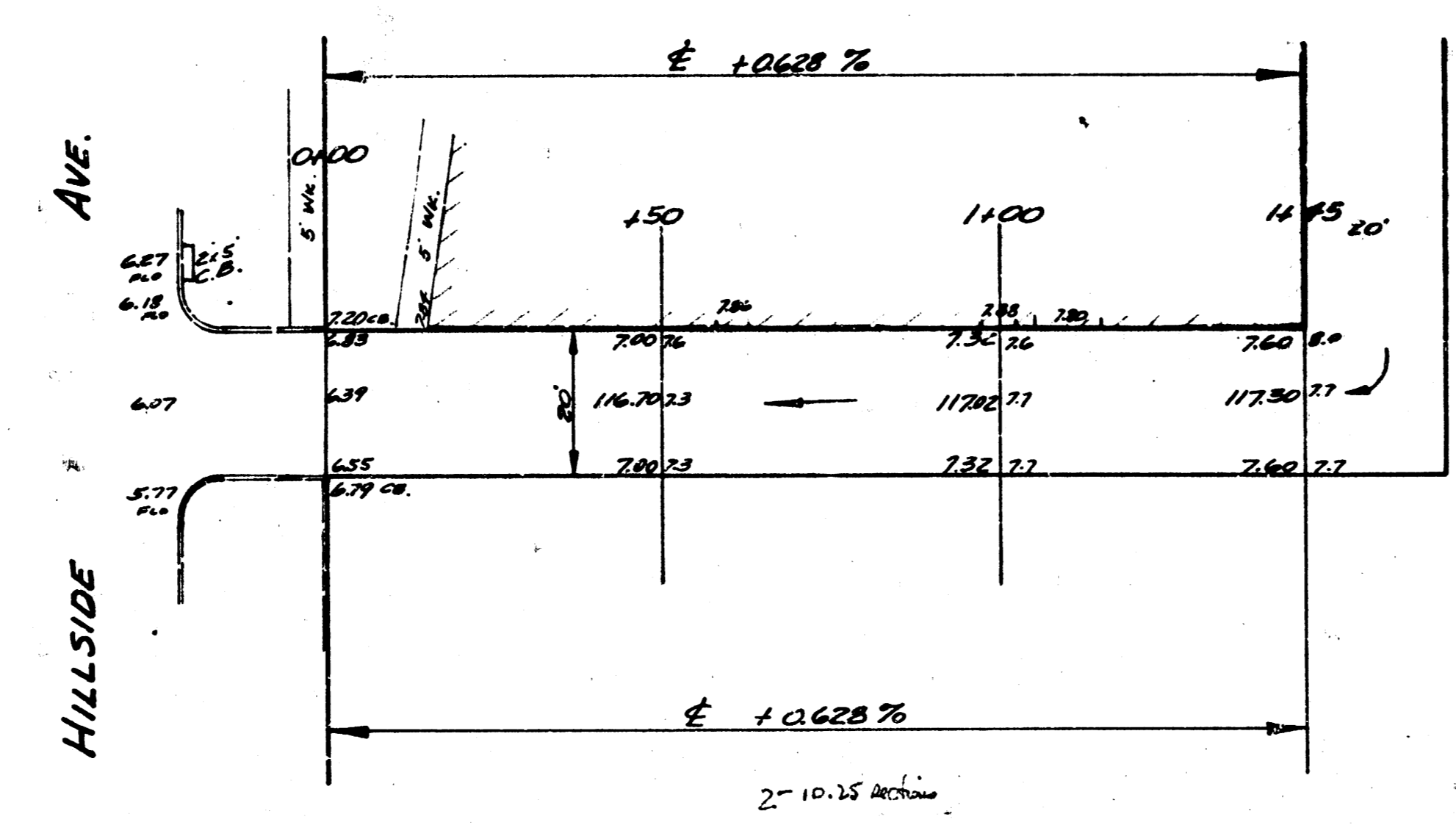
B.M. 115.60 S.W. COR. CONC. P&H 3204 GRANDVIEW

CHAINING E. ON E

0-215 PINE E. CH. HILLSIDE
 0-100 SW. 1/4, C. 1/4 1/4 B.T. MARK 3/4
 0-150 SW. 1/4, C. 1/4 1/4 B.T. MARK 3/4
 0-160 SW. 1/4, C. 1/4 1/4 B.T. MARK 3/4
 0-170 SW. 1/4, C. 1/4 1/4 B.T. MARK 3/4
 0-180 SW. 1/4, C. 1/4 1/4 B.T. MARK 3/4
 0-190 SW. 1/4, C. 1/4 1/4 B.T. MARK 3/4
 0-200 SW. 1/4, C. 1/4 1/4 B.T. MARK 3/4



224
 224
 224
 224
 224



10.3
 10.0
 21.0
 20.1
 20.6
 20.1
 16.9
 16.5

Survey Done
 by
 B.E. Smith
 Checked
 J.F.

ALLEY S. OF OSIE
 E.L. HILLSIDE TO W.L. ALLEY E. HILLSIDE
 6" CONC. - 20'
 CITY OF WICHITA, KANSAS
 B.E. SMITH - CITY ENGINEER
 JUNE, 1953 PROJ. C12-284

