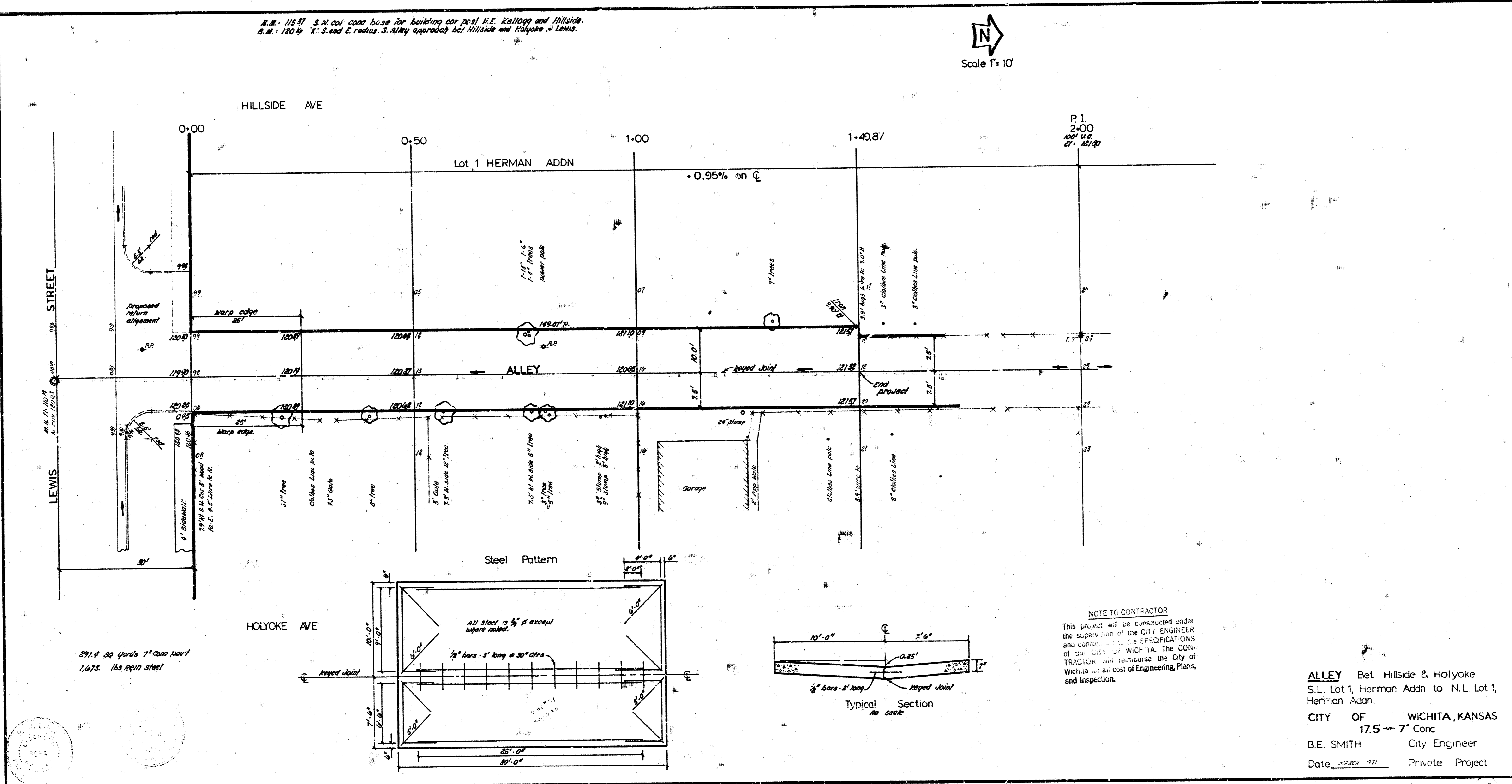
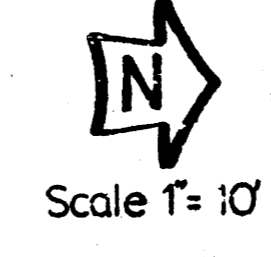
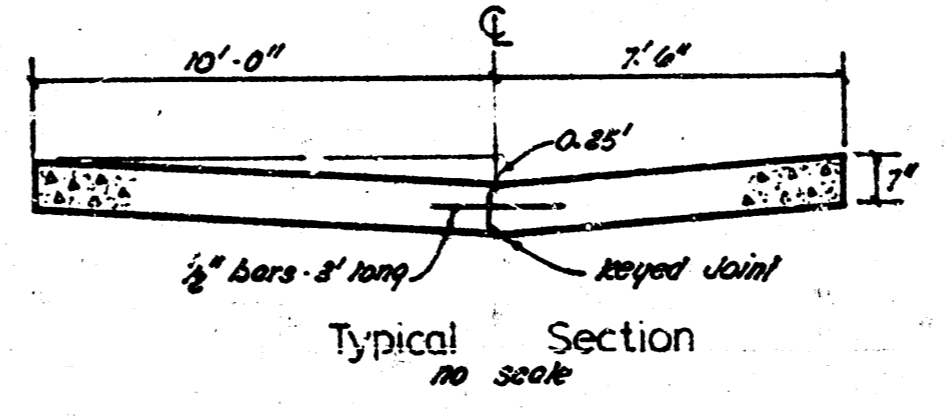
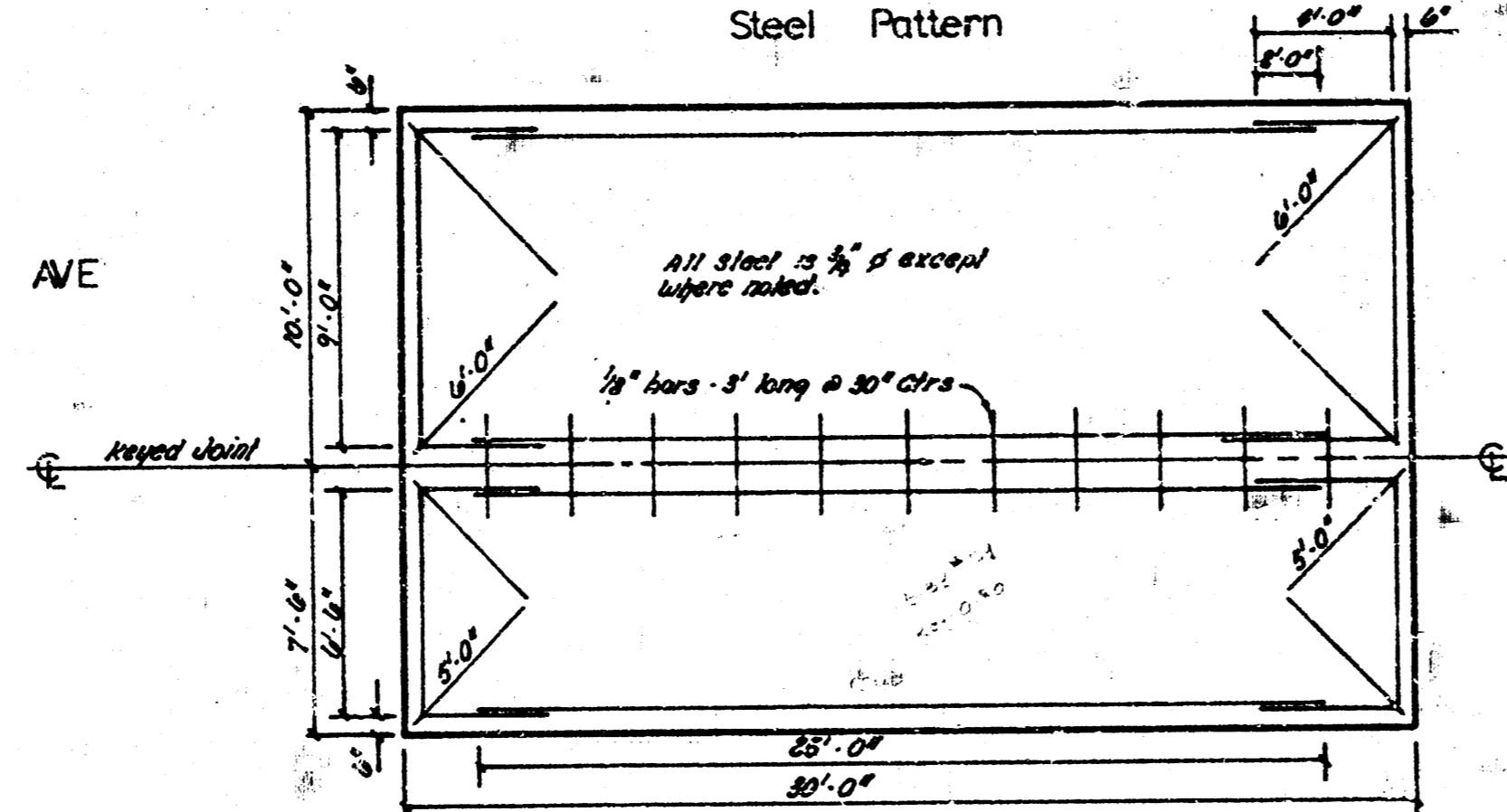


S.M. 115' S.M. cor. conc. base for building car post N.E. Kalllogg and Hillside.
 S.M. 120' 1/2" S. and E. radius S. Alley approach bet Hillside and Holyoke & Lewis.



WICHITA, KANSAS
 J.A.P.M.
 CIVIL
 ENGINEER

291.9 sq yards 7" conc. part
 1,073 lbs Rein steel



NOTE TO CONTRACTOR
 This project will be constructed under the supervision of the CITY ENGINEER and conform to the SPECIFICATIONS of the CITY OF WICHITA. The CONTRACTOR will reimburse the City of Wichita for an cost of Engineering, Plans, and Inspection.

ALLEY Bet Hillside & Holyoke
 S.L. Lot 1, Herman Addn to N.L. Lot 1, Herman Addn.
 CITY OF WICHITA, KANSAS
 17.5' - 7" Conc
 B.E. SMITH City Engineer
 Date JAN 27 1921 Private Project