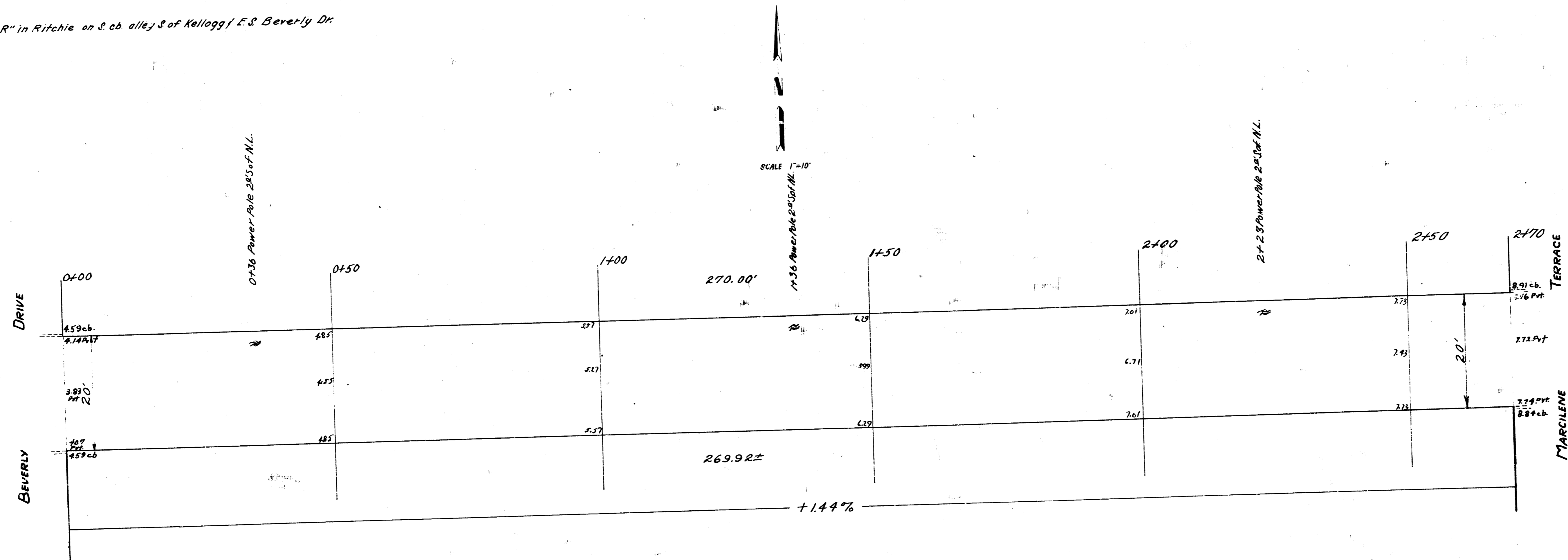


B.M. 154.34 "R" in Ritchie on S. ab. allej S. of Kellogg E.S. Beverly Dr.

B.M. 161.10 N.W. Cor. lower step @ S. end porch front 16<sup>th</sup> 518 Marcilene Terrace



ALLEY S. KELLOGG  
E.L. BEVERLY & W.L. MARCILENE  
20'-6" CONC.  
CITY OF WICHITA, KANSAS  
L.K. WHITE CITY ENGINEER  
AUGUST 1949 PROJECT NO. C-19-136