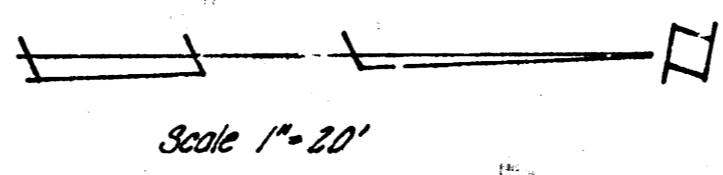
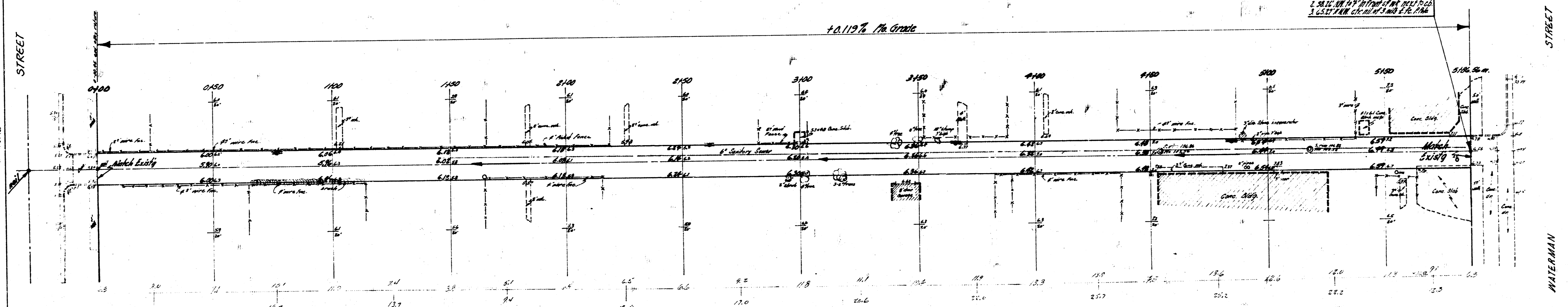


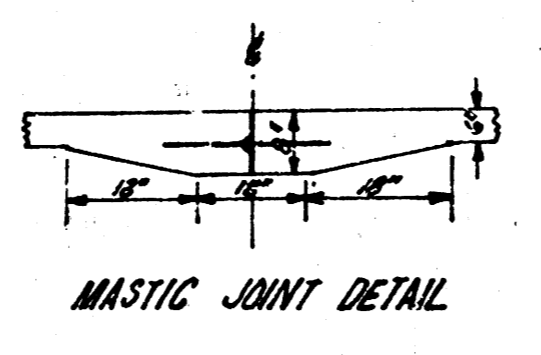
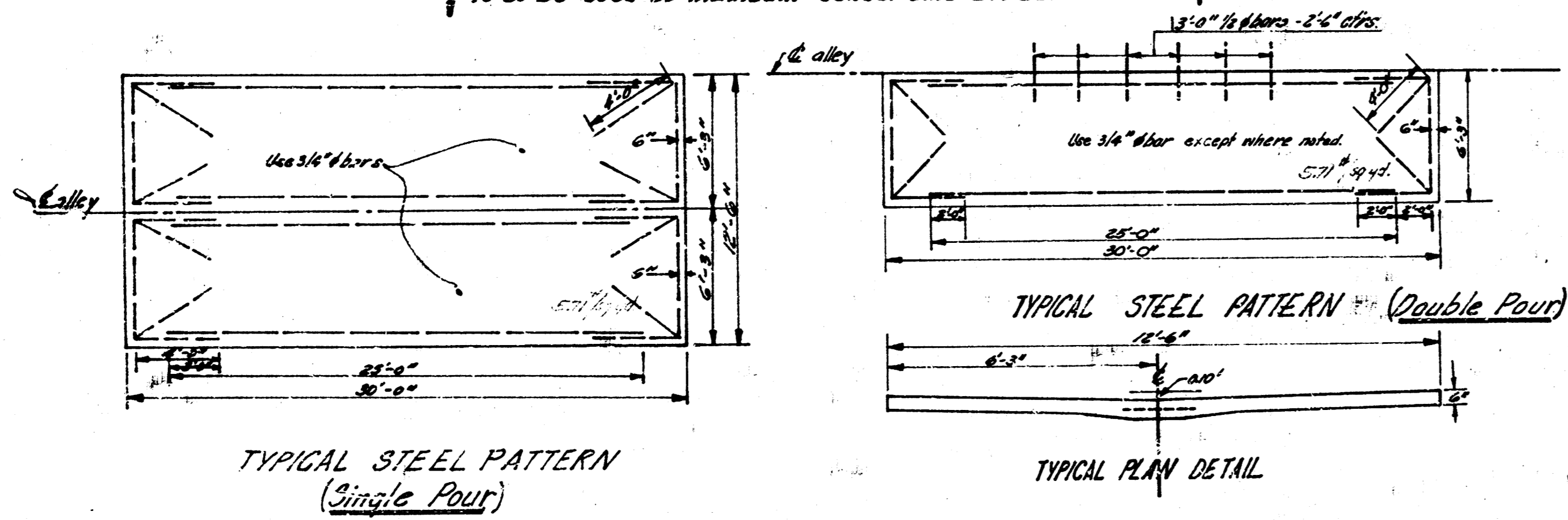
BM #1 12" on back of South wall Waterman & alley north. Elev. 106.78
 BM #2 1" top north e.d. Waterman & alley South Elev. 107.15
 BASE LINE: & Alley.



YES TO JOHN & ALLEY ST. INTERMUN
 1. 1/4" W. 1/2" S. 1/2" S. 1/2" S.
 2. 1/4" W. 1/2" S. 1/2" S. 1/2" S.
 3. 1/4" W. 1/2" S. 1/2" S. 1/2" S.



Note to Field Engineer and Contractor - The Contractor
 has the option as to pouring alley in single or double
 pours. See steel patterns as shown on plan.
 Note to Field Engineer - If single pour is used extreme care
 is to be used to maintain center-line grade.



ALLEY BET. GREENWOOD & HYDRAULIC
 N. LEWIS STR. to S. WATERMAN AVE.
 12.5' - 6" CONCRETE
 CITY OF WICHITA, KANSAS
 B. E. SMITH CITY ENGINEER
 DATE: Aug. 1929 PROJ. NO. C18-155