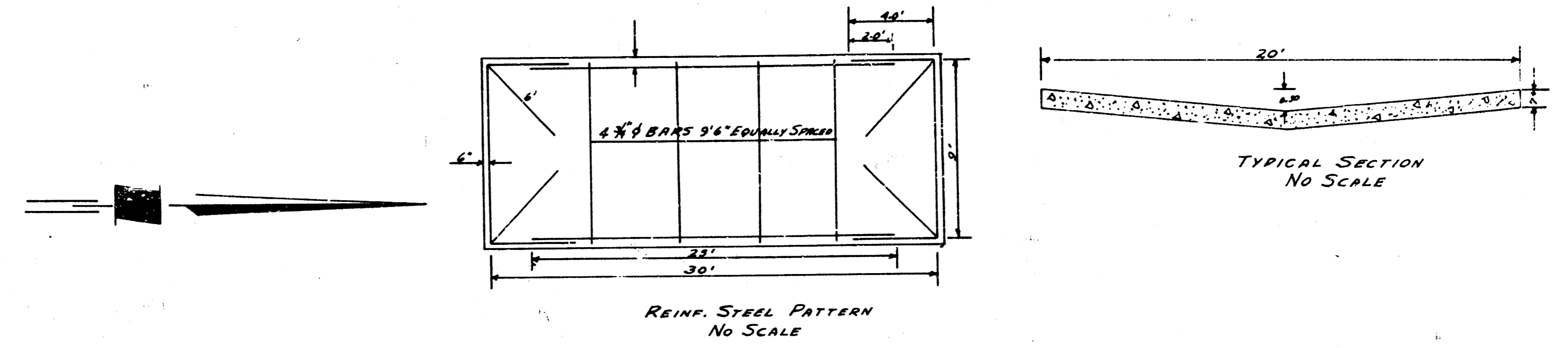
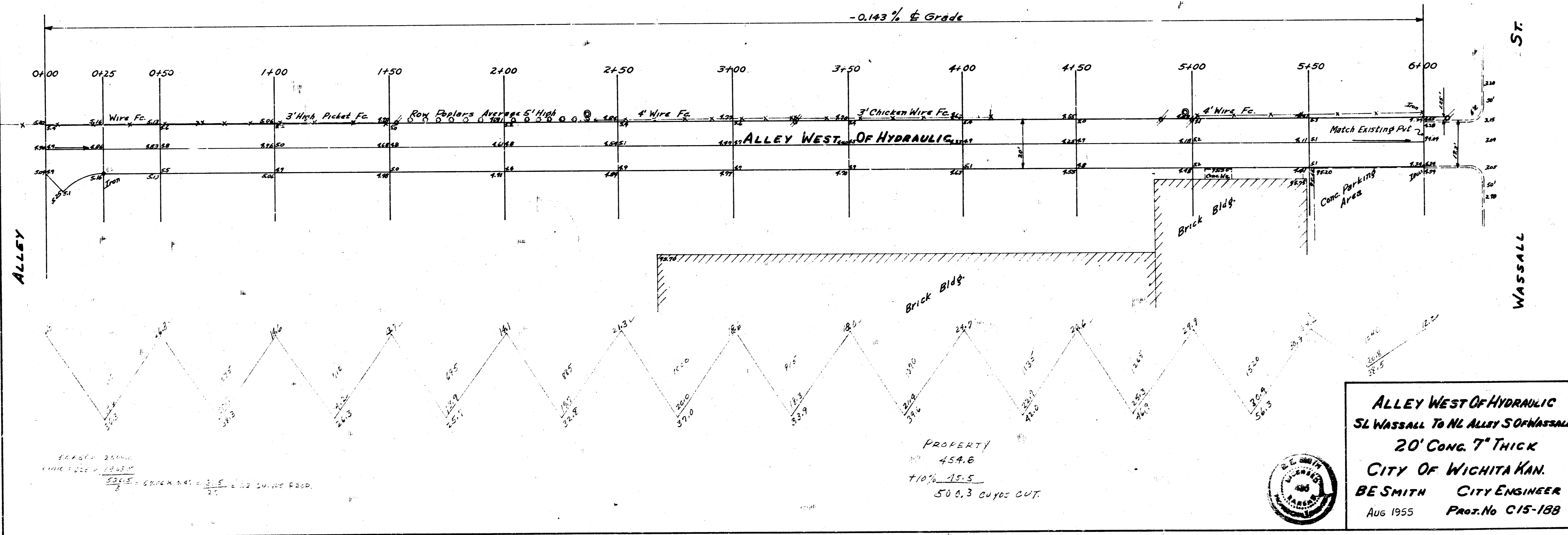


B.M. 95.73 Top 3 Nails W.S. Pole S.W. Cor. Greenwood So. of Wassall
 B.M. 95.82 4 On N.W. Cor. Wk. @ S.S. of Alley S. of Wassall & W.S. of Alley W. of Hydraulic.
 Stationing of Base Line 5' Off West Prop. Line.



Survey of 1955
 Checked
 11/1/55



1 15 4 8