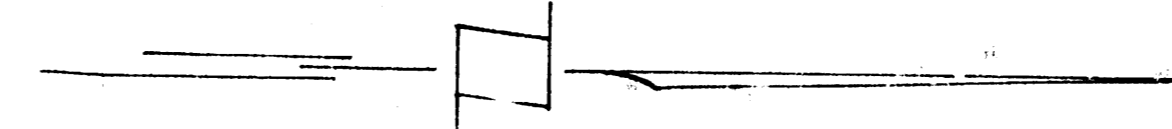
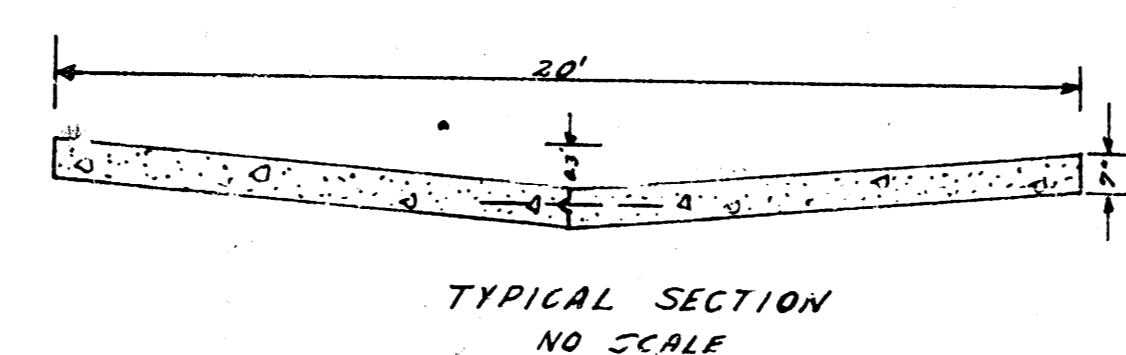
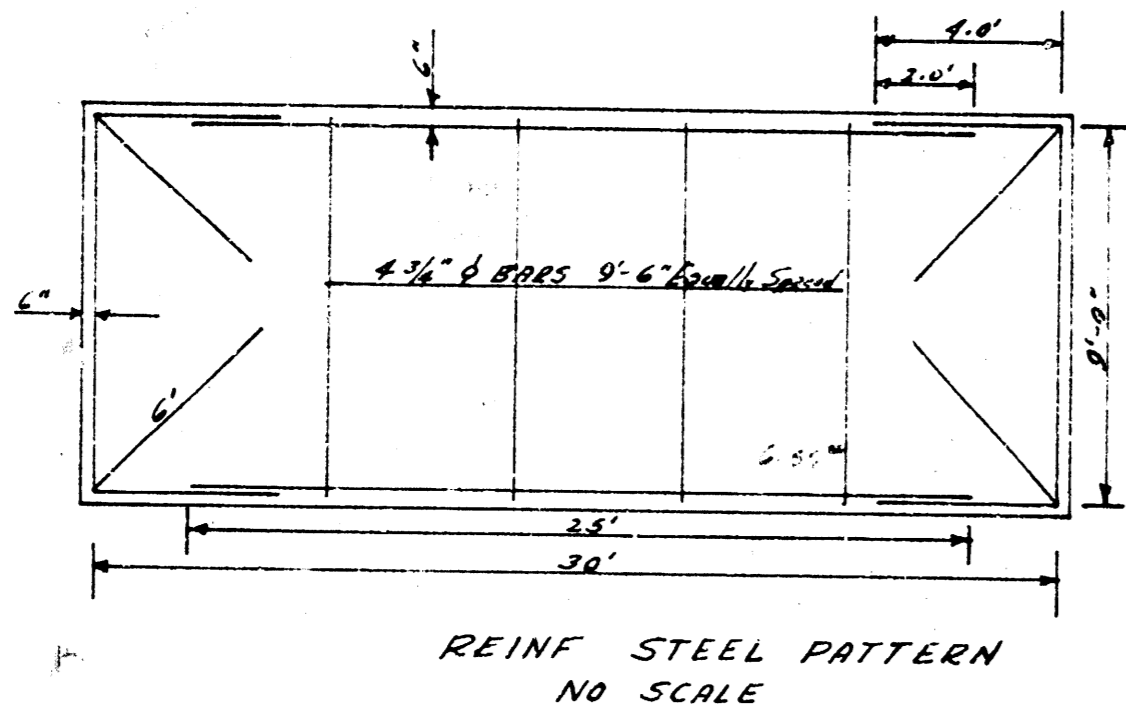


RM. 106.53 140 SPINE W.S. 20' ELM. S.S. ENGLISH C. EAST OF EL. ALLEY SOUTH BET. LULU & PATTIE
 P.M. 108.33 "B" IN BORDER, BACK OF NK NORTH 1' NORTH OF NL. ENGLISH NE COR. LULU & ENGLISH
 STATION 1 BASE LINE & ALLEY

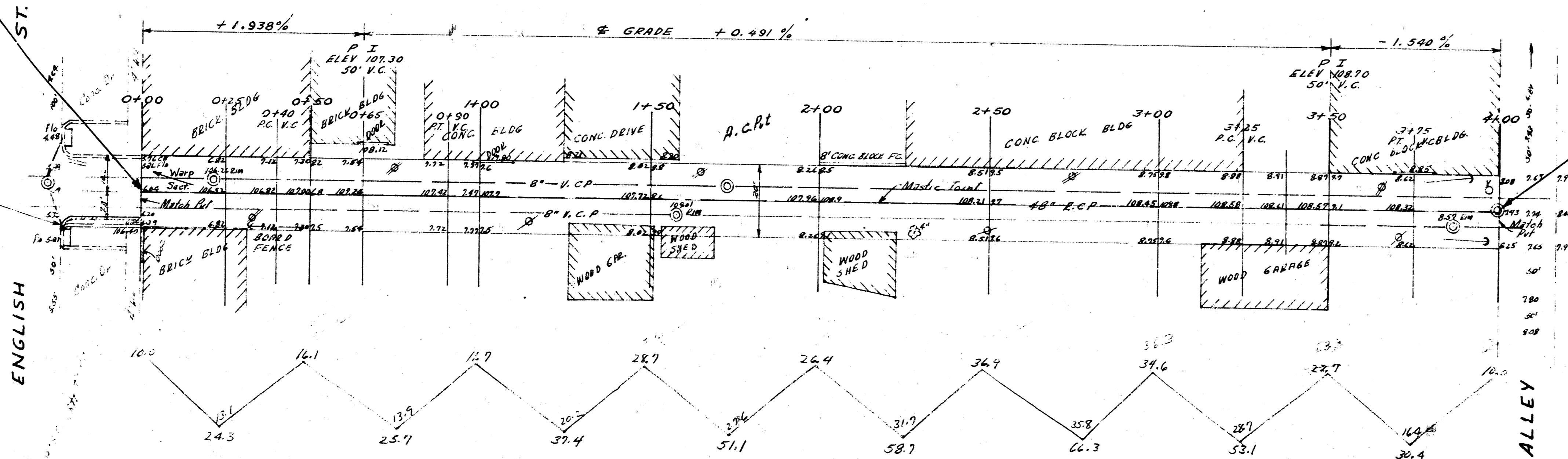


TOP-OF-EXISTING
 48" S.S. 15-105.05

TOP-OF-EXISTING
 48" S.S. 15-105.48

REMOVE CB AS SHOWN
 BY DRAWING WIDEN AS
 SHOWN.

NOTE: USE CAUTION IN
 CONSTRUCTING PVT. AS 48"
 R.C.P. IS NEAR THE SURFACE
 O.N. E. OF ALLEY



Reports Etc
 347.0
 145% 347
 3867 C. 1000 C.F.



ALLEY BET. PATTIE & LULU
 N. ENGLISH TO S. ALLEY SO. OF DOUGLAS
 20' 7" CONC.
 CITY OF WICHITA KANS.
 BE SMITH CITY ENGINEER
 OCT. 1954 PROJ. NO. CIT-44