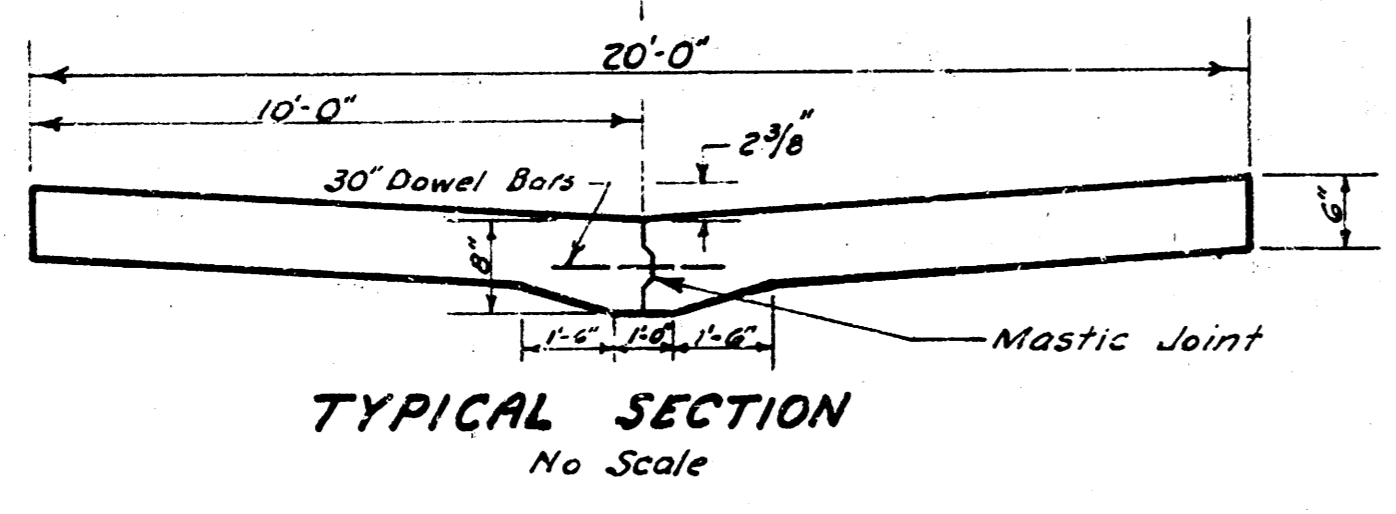
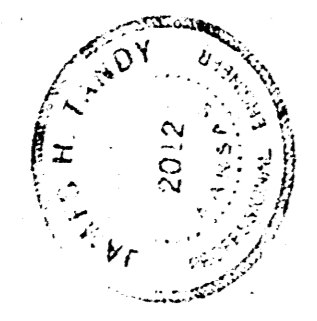
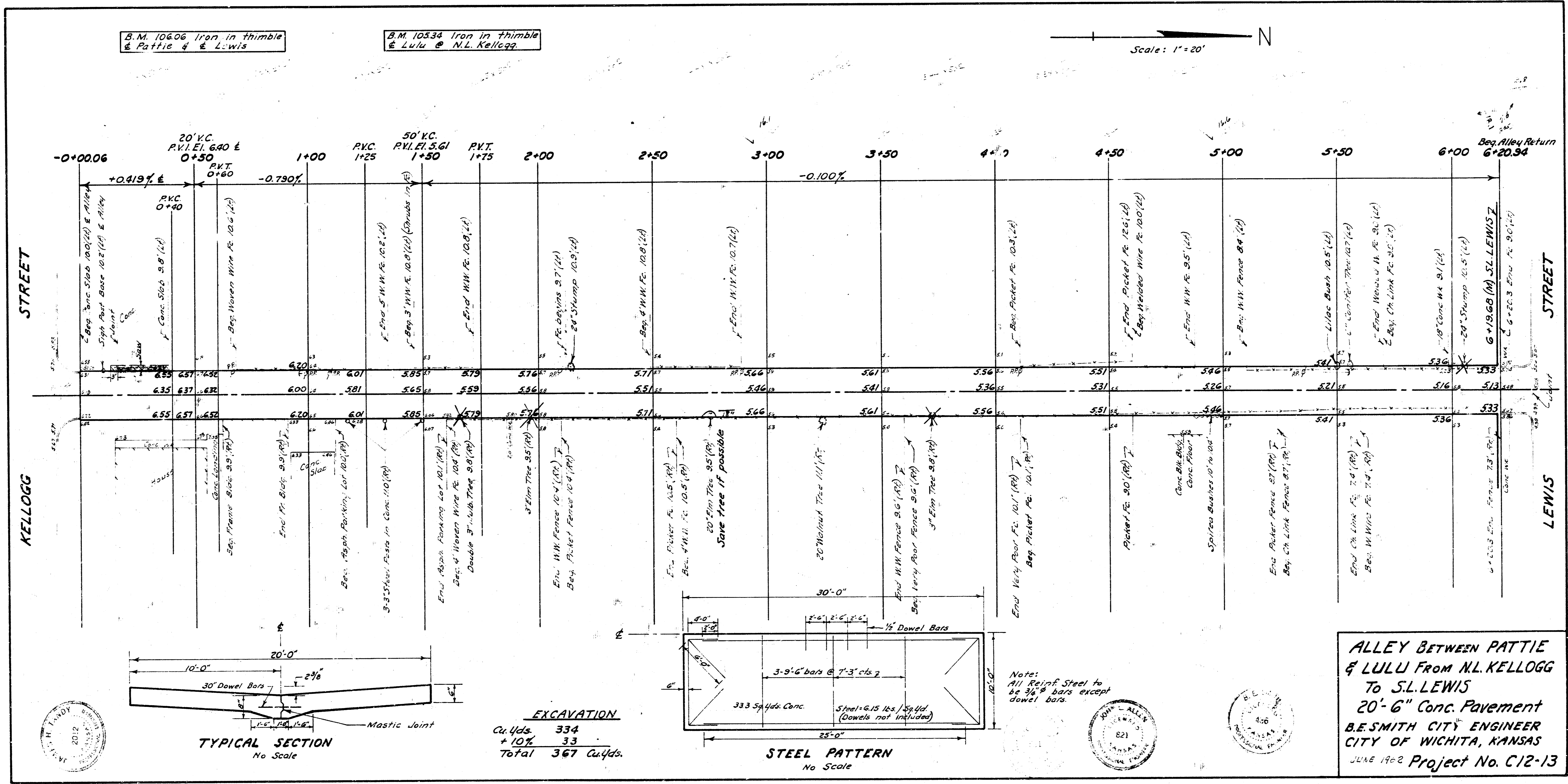
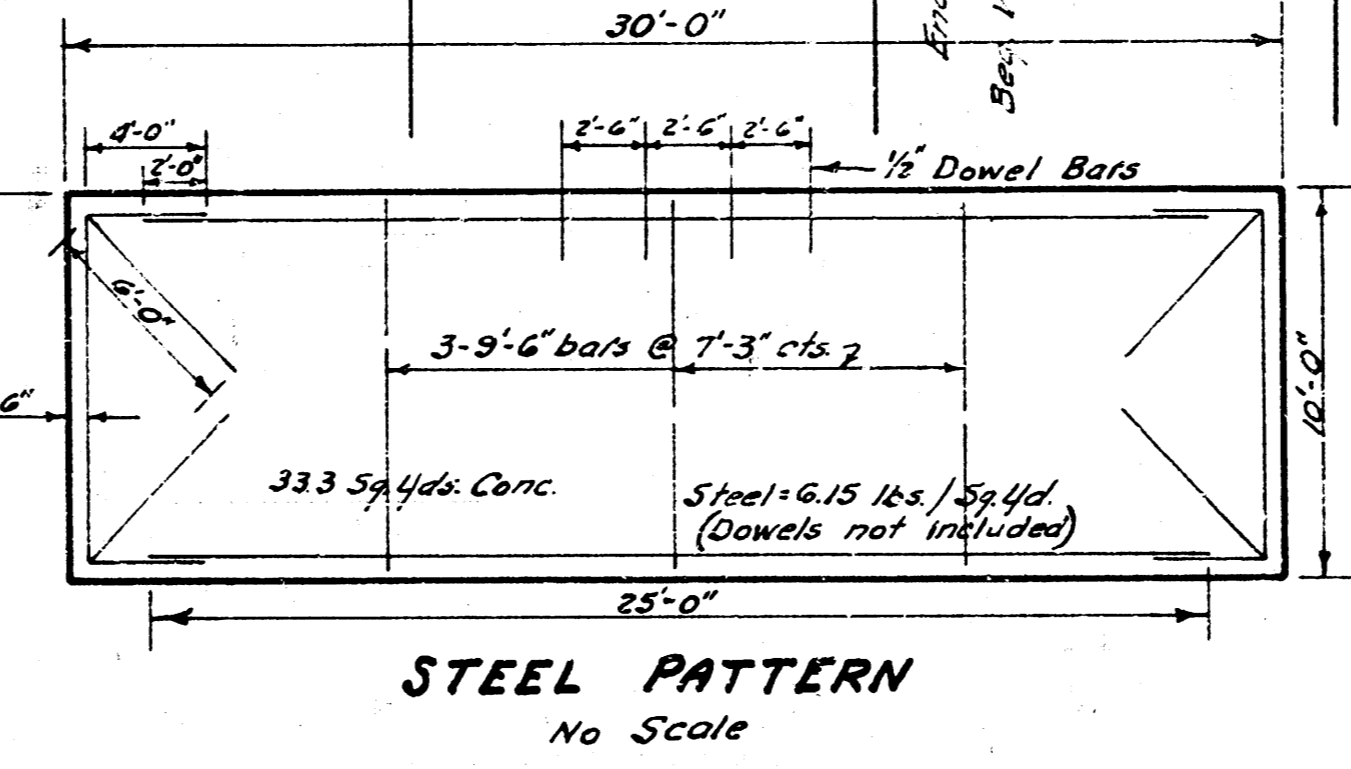


Hughes 114 519

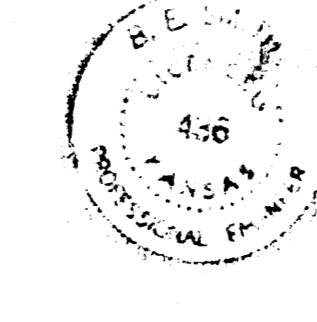
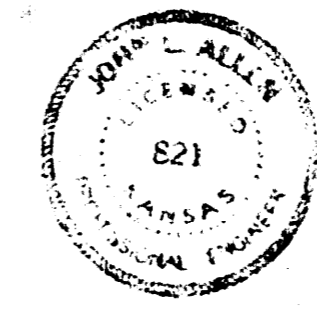


EXCAVATION

Cu. Yds.	334
+ 10%	33
Total	367 Cu. Yds.



Note: All Reinf. Steel to be 3/8" bars except dowel bars.



ALLEY BETWEEN PATTIE & LULU FROM N.L. KELLOGG To S.L. LEWIS
20'-6" Conc. Pavement
B.E. SMITH CITY ENGINEER
CITY OF WICHITA, KANSAS
 JUNE 1902 Project No. C12-13