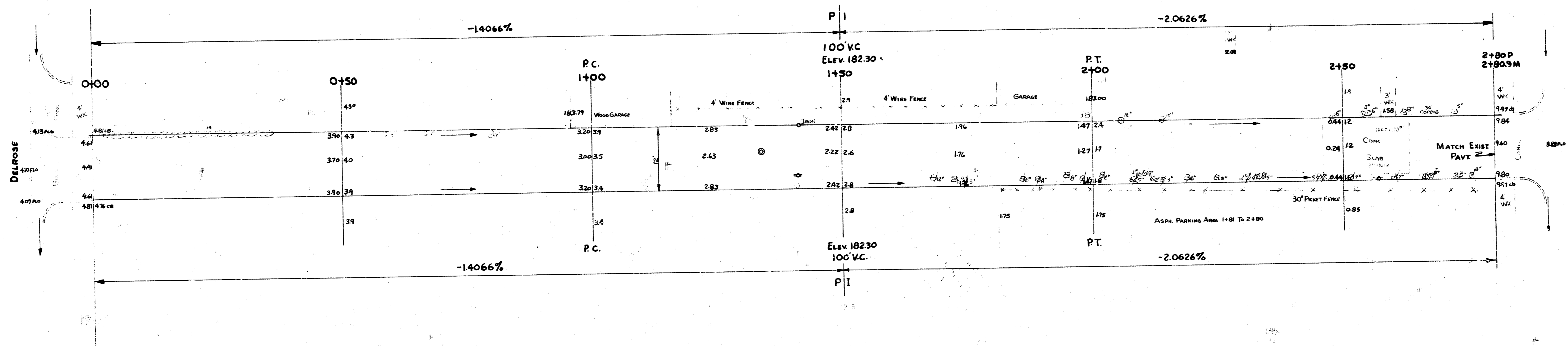
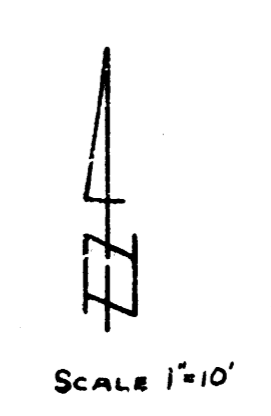
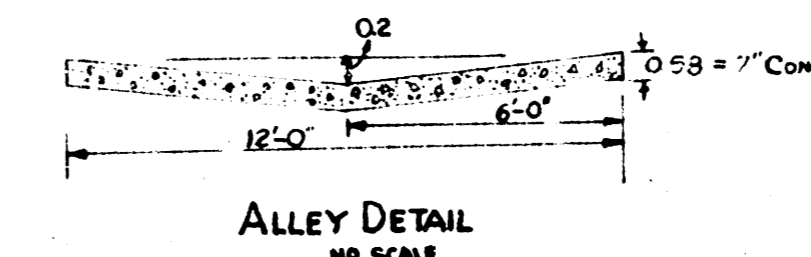
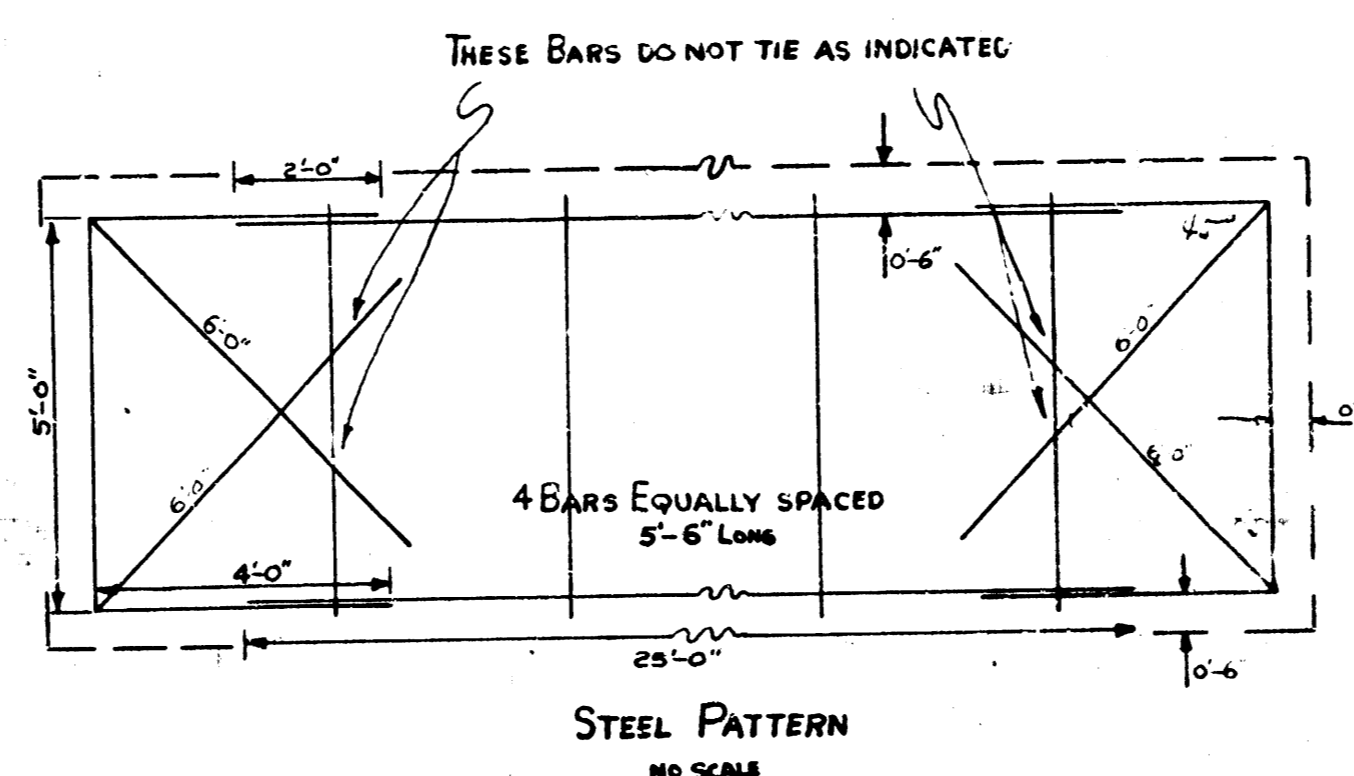


STA. ON 6' W TO E.  
 B.M. 17730 STAND. SE OLIVER & CENTRAL.  
 B.M. 17725 13' W. GLOBE & W. N. S. OF ALLEY. N. OF CENTRAL. WS OLIVER.  
 B.M. 15516 'E' IN ELTING AT VIK N. WS DELROSE, NS OF ALLEY N. OF CENTRAL.

**NOTE TO FIELD ENGINEER**  
 MEASURE UP REMOVAL AT DELROSE.  
 COUNT TREES AND TURN IN.



1/4" CH 85  
 1/4" WALS  
 1/4" W.P.  
 1/4" W.P.

**ALLEY N. OF CENTRAL**  
 EL. DELROSE TO W.L. OLIVER  
 7' CONC. 12'  
 CITY OF WICHITA, KANSAS  
 B.E. SMITH CITY ENGINEER  
 OCT. 1954 Proj. No. C14-232

