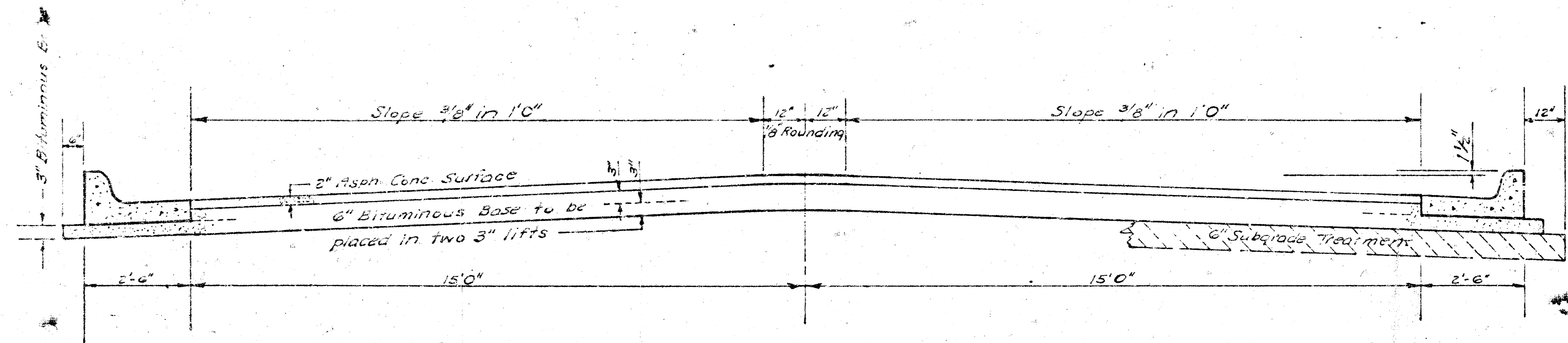


COUNTRY ACRES AVE.
 S. L. LOT 1, NORTHWEST HIGH SCHOOL ADDITION
 -S. L. 18th ST. NO.
 DAKS576077.



TYPICAL SECTION

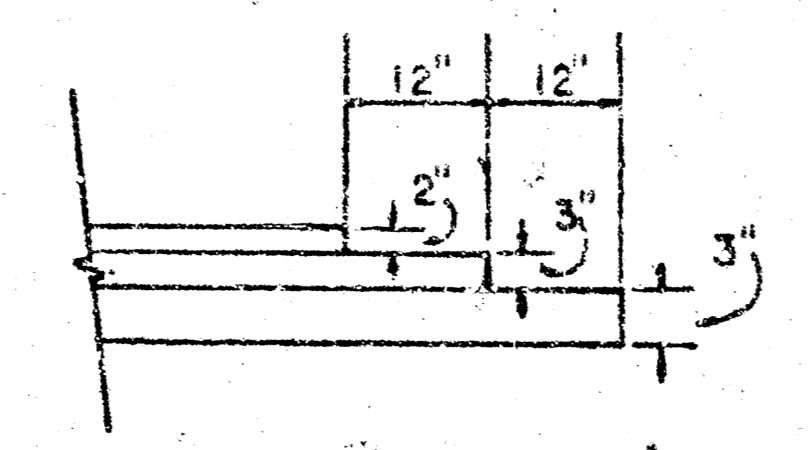
35' ASPHALTIC CONCRETE PAVEMENT WITH BITUMINOUS BASE

The A.C. Pavement between the comb. curb & gutter shall be paid as Sq.Yds. 8" A.C. Pavement (6" Bituminous Base).
 The Bituminous Base under the comb. curb & gutter shall be paid as Sq.Yds. 3" Bituminous Base.

A TACK COAT OF EMULSIFIED ASPHALT (SS-1H) SHALL BE APPLIED AT AN APPROXIMATE RATE 0.05 GALLONS PER SQ YD BETWEEN LIFTS OF ASPHALTIC MATERIALS WHEN ORDERED BY THE ENGINEER. TACK COAT WILL NOT BE PAID FOR DIRECTLY AND SHALL BE CONSIDERED AS SUBSIDIARY TO PRICE BID FOR ASPHALTIC PAVEMENT.

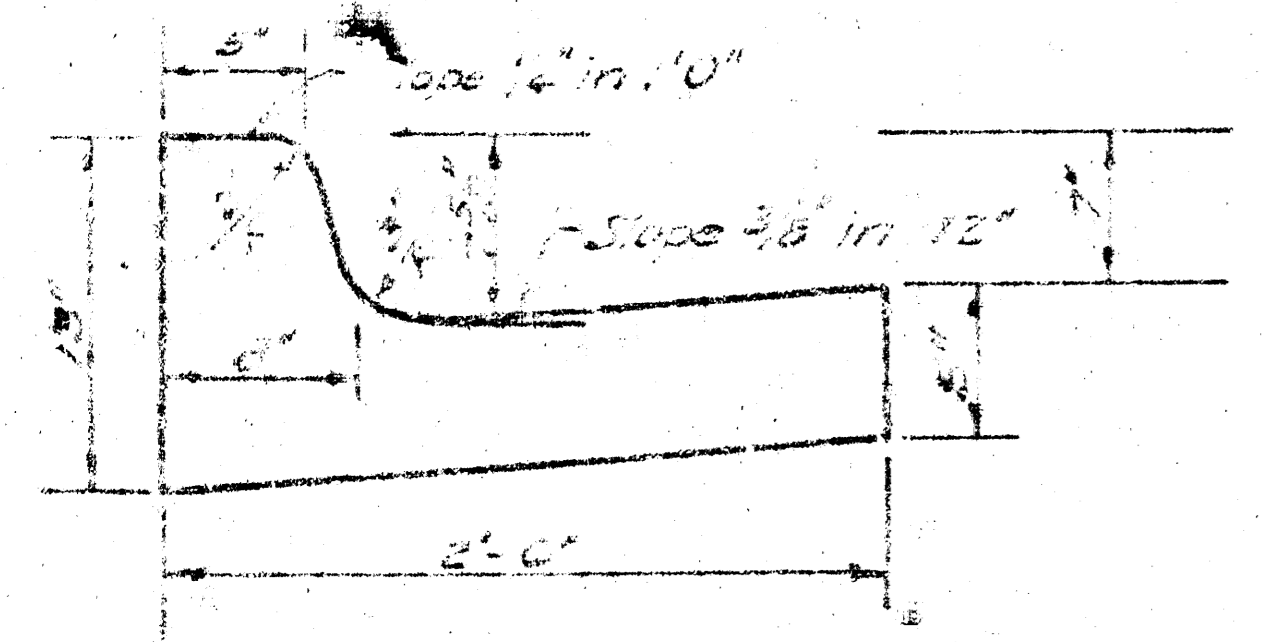
BITUMINOUS BASE AND ASPHALTIC CONCRETE WEARING SURFACE SHALL BE PLACED WITH A LAYDOWN MACHINE HAVING AUTOMATIC ELECTRONIC CONTROLS FOR CROWN AND GRADE. CONSTRUCTION JOINTS IN EACH LIFT SHALL BE STAGGERED A MINIMUM DISTANCE OF 1' WITH JOINTS IN PRECEDING LIFTS AND PLACED SUCH THAT A JOINT WILL BE CONSTRUCTED ON THE CENTERLINE IN THE TOP LIFT.

DETAIL OF TRANSVERSE CONSTRUCTION JOINTS

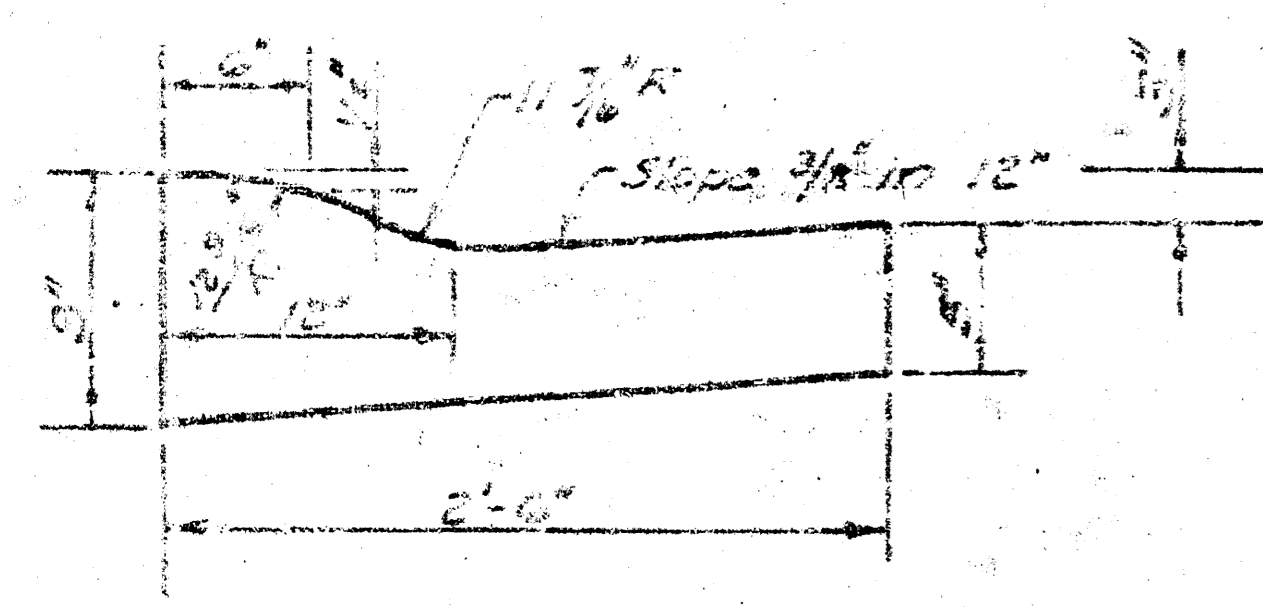


TRANSVERSE CONSTRUCTION JOINTS SHALL BE CONSTRUCTED IN FLEXIBLE BASE PAVEMENTS AT LOCATIONS WHERE PAVEMENT TEMPORARILY ENDS TO FACILITATE FUTURE PAVEMENT CONSTRUCTION AS SHOWN BY DETAIL. THE COST OF CONSTRUCTING THE TRANSVERSE CONSTRUCTION JOINTS SHALL NOT BE MEASURED OR PAID FOR DIRECTLY BUT SHALL BE INCLUDED IN THE BID PRICE FOR SQUARE YARDS OF ASPHALTIC CONCRETE PAVEMENT.

COMBINED CURB & GUTTER



ROLL TYPE CURB & GUTTER



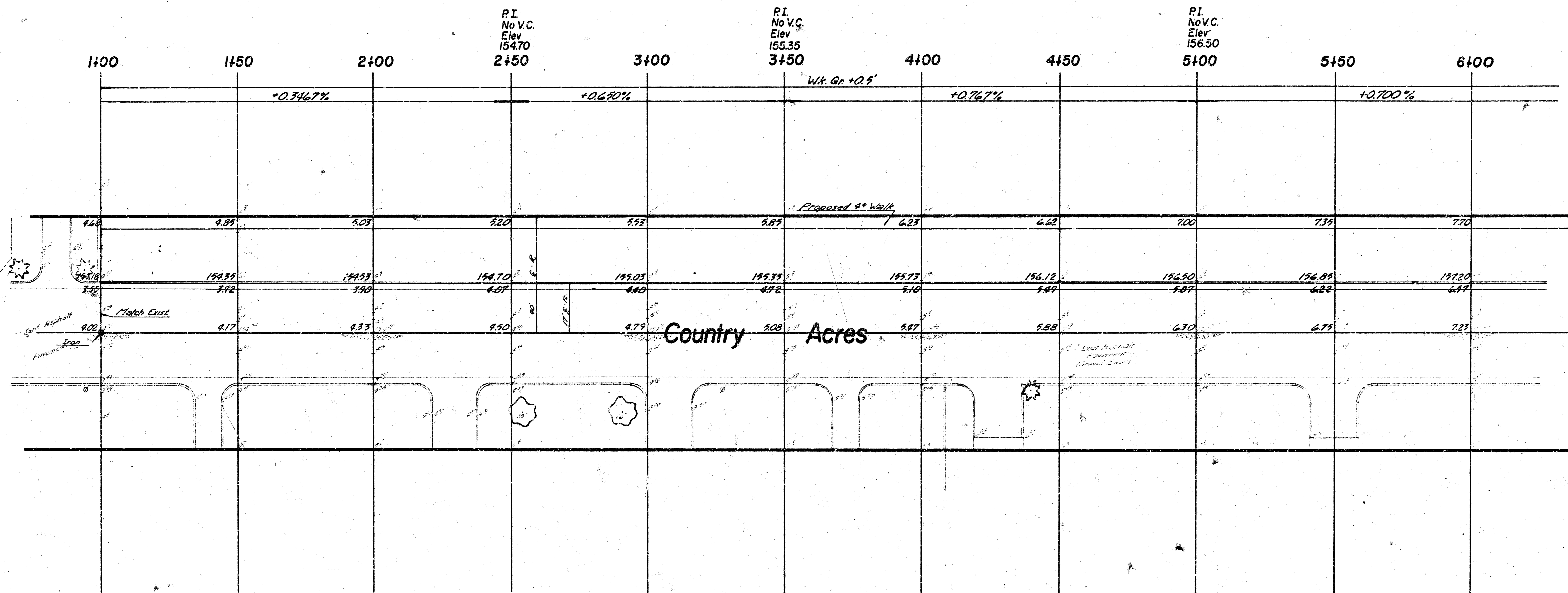
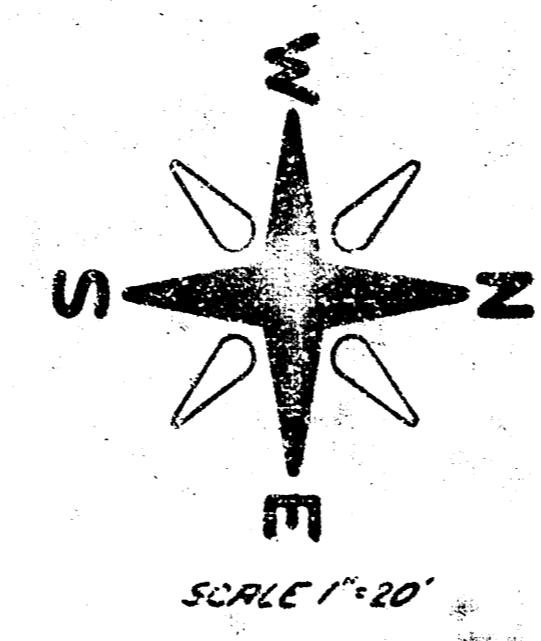
CITY OF WICHITA KANSAS

DEPARTMENT of PUBLIC WORKS - Engineering
 Division

R. W. LINN CITY ENGINEER

DATE _____ Proj. No. _____

B.M. 16619 City Sid. 13th & Country Acres 42.3' East & 44' North of 1/4 Sec. Corner.
 B.M. 16613 S.W. Corner Conc. Porch to House @ 1208 Country Acres.
 B.M. 15545 N.W. Corner Bottom Conc. Step to House @ 1000 Country Acres.
 B is 10' West & Parallel to C Country Acres.



Country Acres

SUB-GRADE
 TYPE OF SUB-GRADE TREATMENT SHALL BE DETERMINED BY THE FIELD ENGINEER. SUB-GRADE TREATMENT MAY CONSIST OF LIME TREATMENT, CEMENT TREATMENT, SUB-GRADE MODIFICATION, OR ANY COMBINATION OF THESE.

NOTE TO FIELD ENGINEER & CONTRACTOR
 Grade parking and clear right-of-way for proposed sidewalk. Compact fill in sidewalk area, TO BE CONSTRUCTED BY "OTHERS".

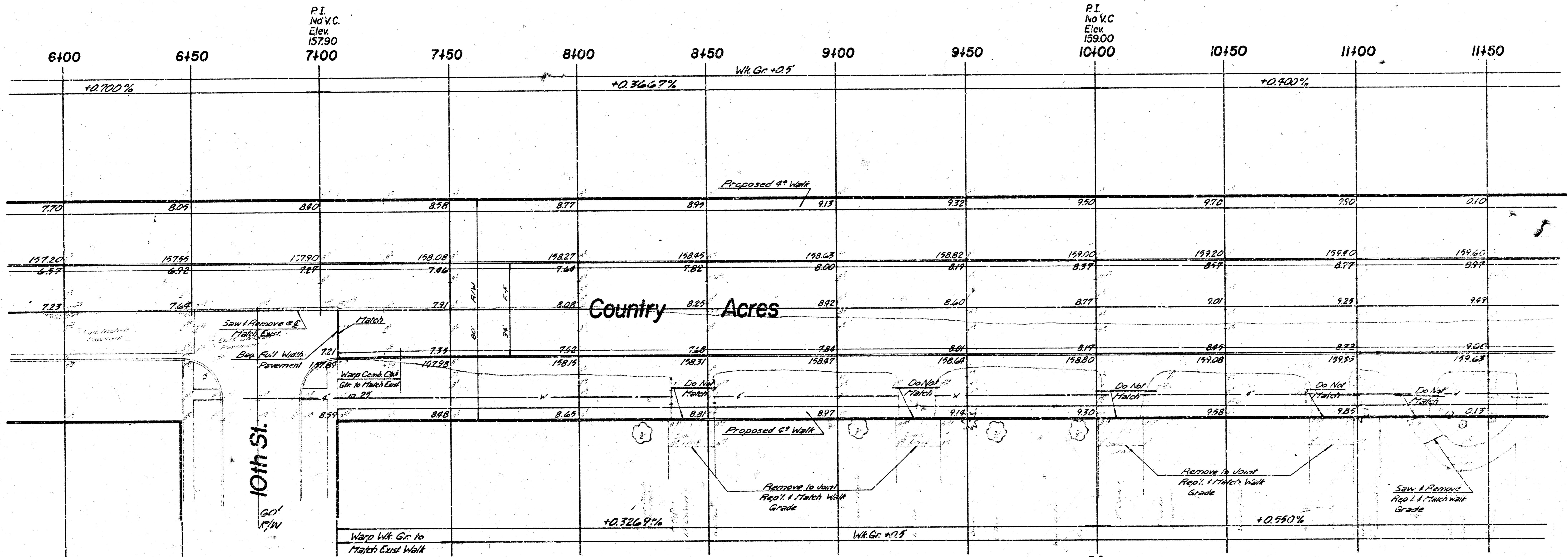
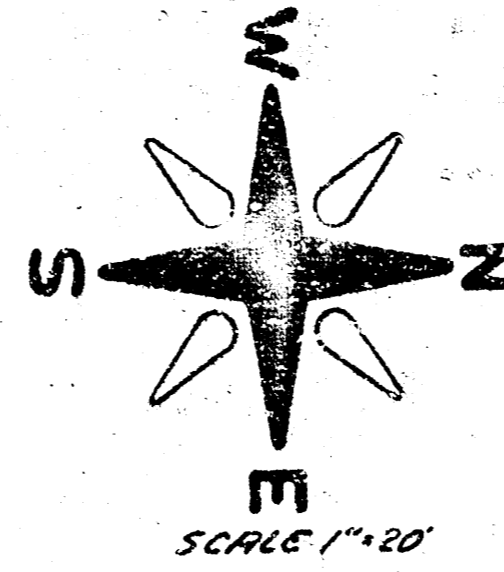
Note: From Sta 1+00 to Sta 6+00 Set Crown Grades as Shown Overlay East Half of Street as Required to Match Proposed Grades. Feather Overlay to Match Existing Asphalt in Minimum Distance.

1. Trees to be Removed are Marked thus
2. Paving Contractor to Coordinate Construction with Drainage Contractor

EARTHWORK		
	Property	City
Excavation	5024.7	112.1
+10%	502.5	11.2
Total	5527.2 C.Y.	123.3 C.Y.
Compacted Fill	381.3	0.0
+10%	38.1	-
Total	419.4 C.Y.	0.0 C.Y.
Manipulation	9202.9 S.Y.	598.2 S.Y.

COUNTRY ACRES
 S.L. LOT 1, NORTHWEST HIGH SCHOOL
 ADDITION - S.L. 13th ST.
 DAKS576077

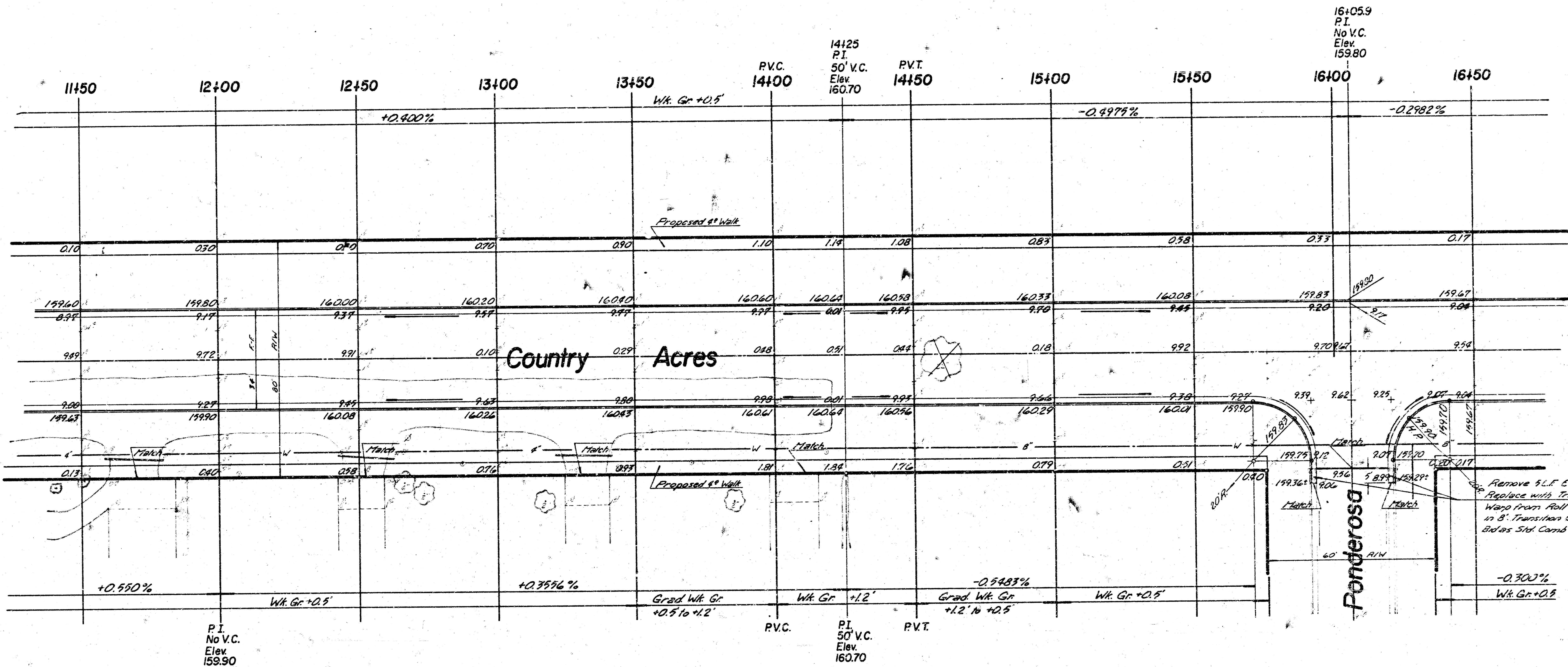
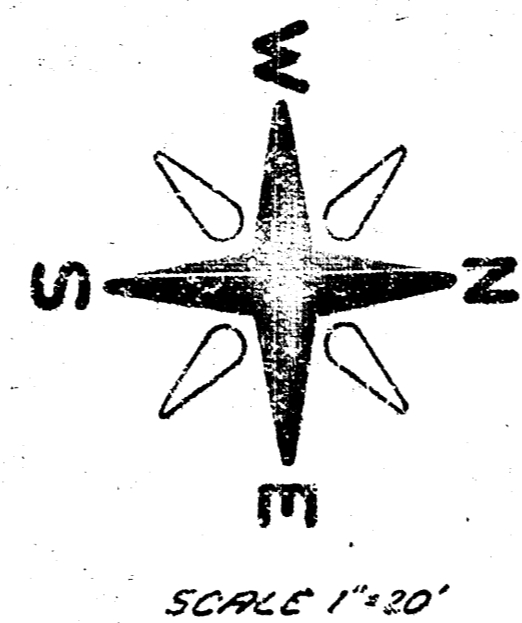
B.M. 160.83 S.W. Corner Conc. Porch to House @ 1108 Country Acres.
 B.M. 164.13 S.W. Corner Conc. Porch to House @ 1208 Country Acres.
 B is 10' West of & Parallel to E Country Acres.



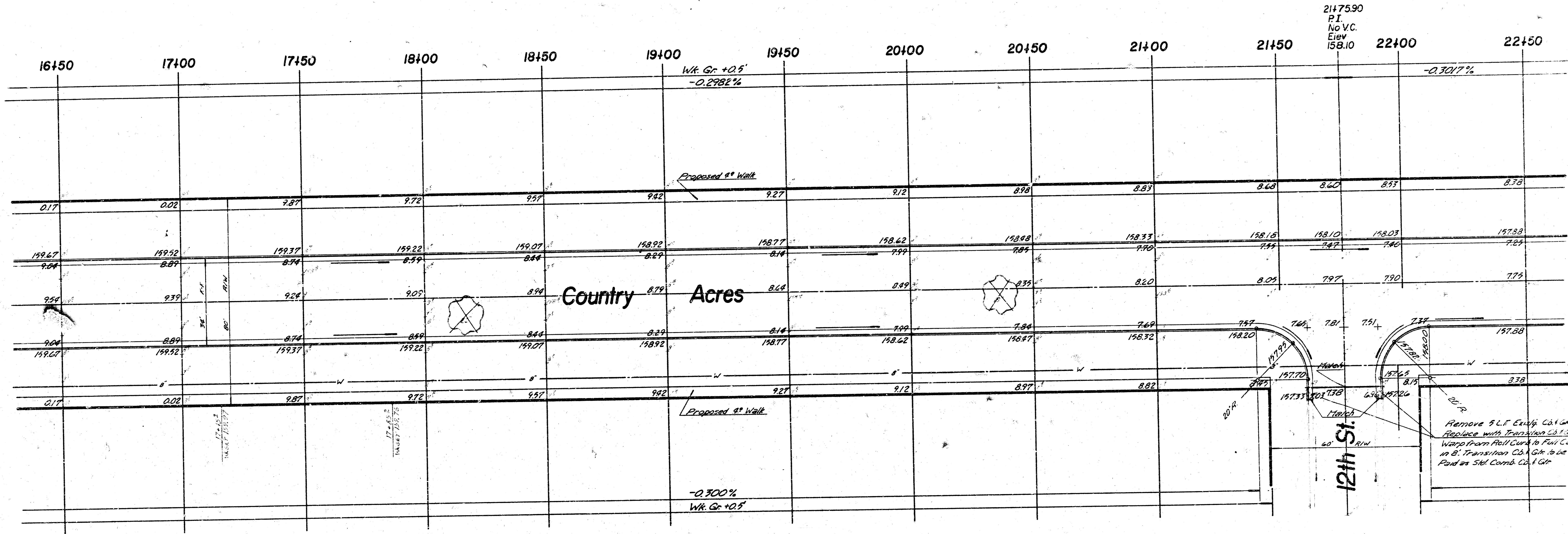
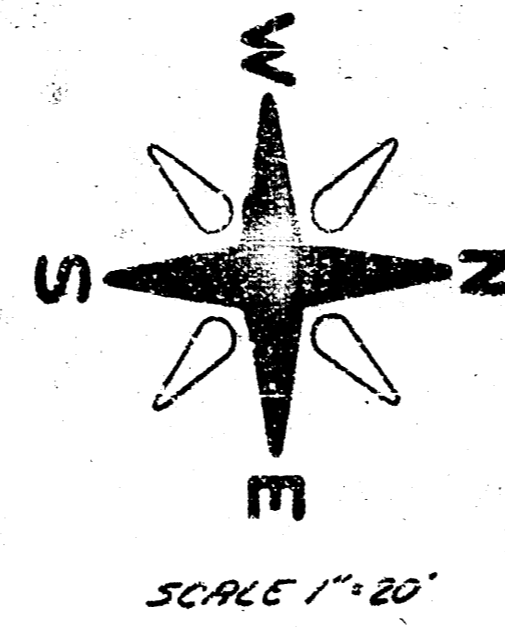
Country Acres

10th St.
60' R/W

B.M. 160.83 S.W. Corner Conc. Porch to House @ 1108 Country Acres
 B.M. 164.13 S.W. Corner Conc. Porch to House @ 1208 Country Acres
 B is 10' West of & Parallel to Country Acres



B.M. 156.19 City Sid. 13th & Country Acres, 923' East & 44' North of
 1/4 Sec. Corner
 B.M. 164.13 S.W. Corner Conc. Porch to House @ 1208 Country Acres
 @ is 10' West of & Parallel to @ Country Acres

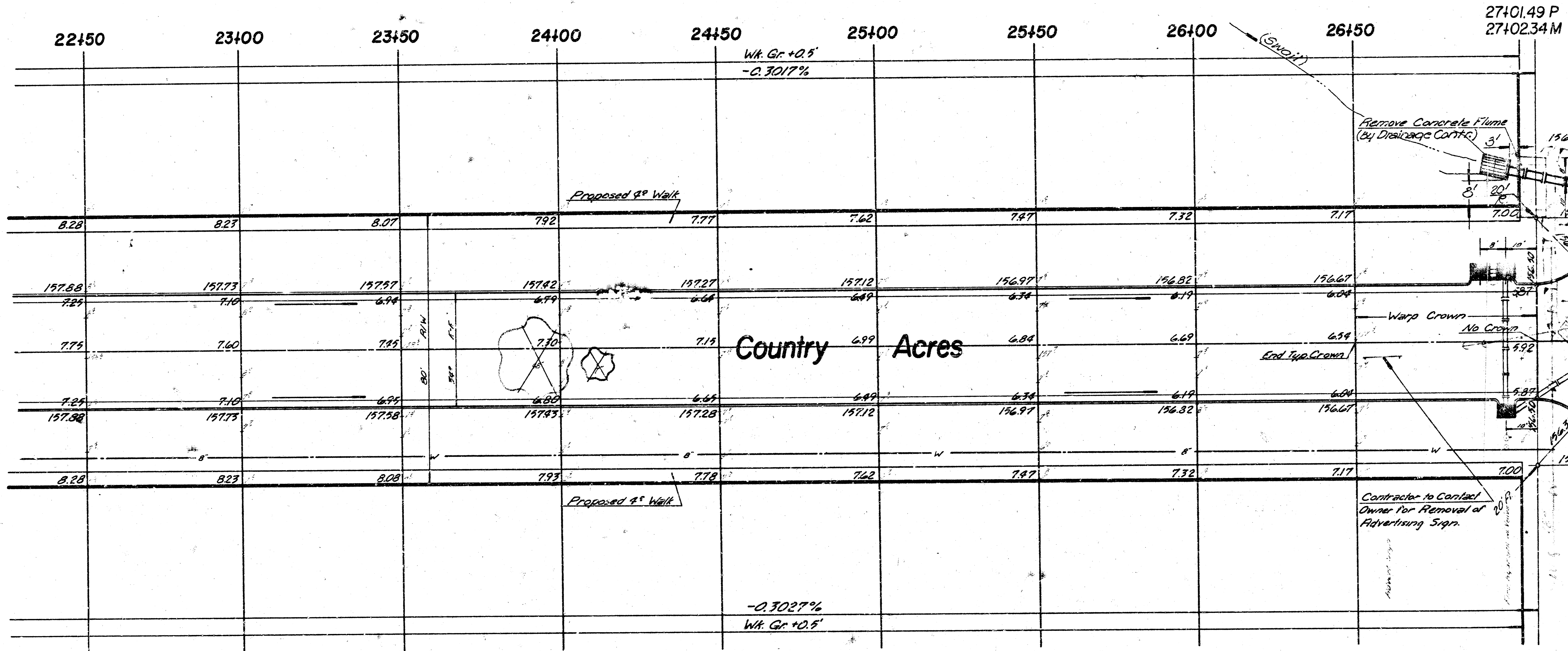
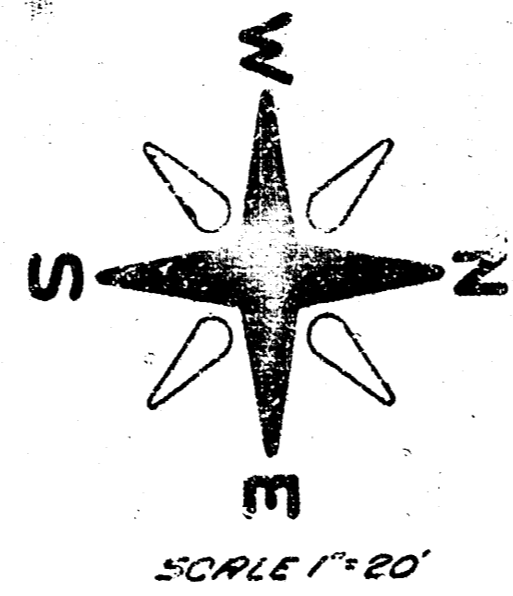


2147590
 P.I.
 No V.C.
 Elev 158.10

COUNTRY ACRES

B.M. 196.19 City Sid. 13th & Country Acres, 42.3' East & 44' North of
1/4 Sec. Corner

B is 10' West of & Parallel to E Country Acres



Contractor to Grade Parting S.S. 13th from
W.C. Country Acres to 25' West of W.C.
Field Engineer to Cross Section this Area
After Drainage Contractor has Completed
his Work.

Drainage by Others

Note: Any Pavehail Disturbed During Curb & Gutter
Removal is to be Repaired Incidental to Proj. &
Remove Curb & Gutter to Nearest Joint Beyond
Returns.

Construct 8" Valley Gutter
(6" conc. w/ 2" asph.)

Contractor to Contact
Owner for Removal of
Advertising Signs.

COUNTRY ACRES

