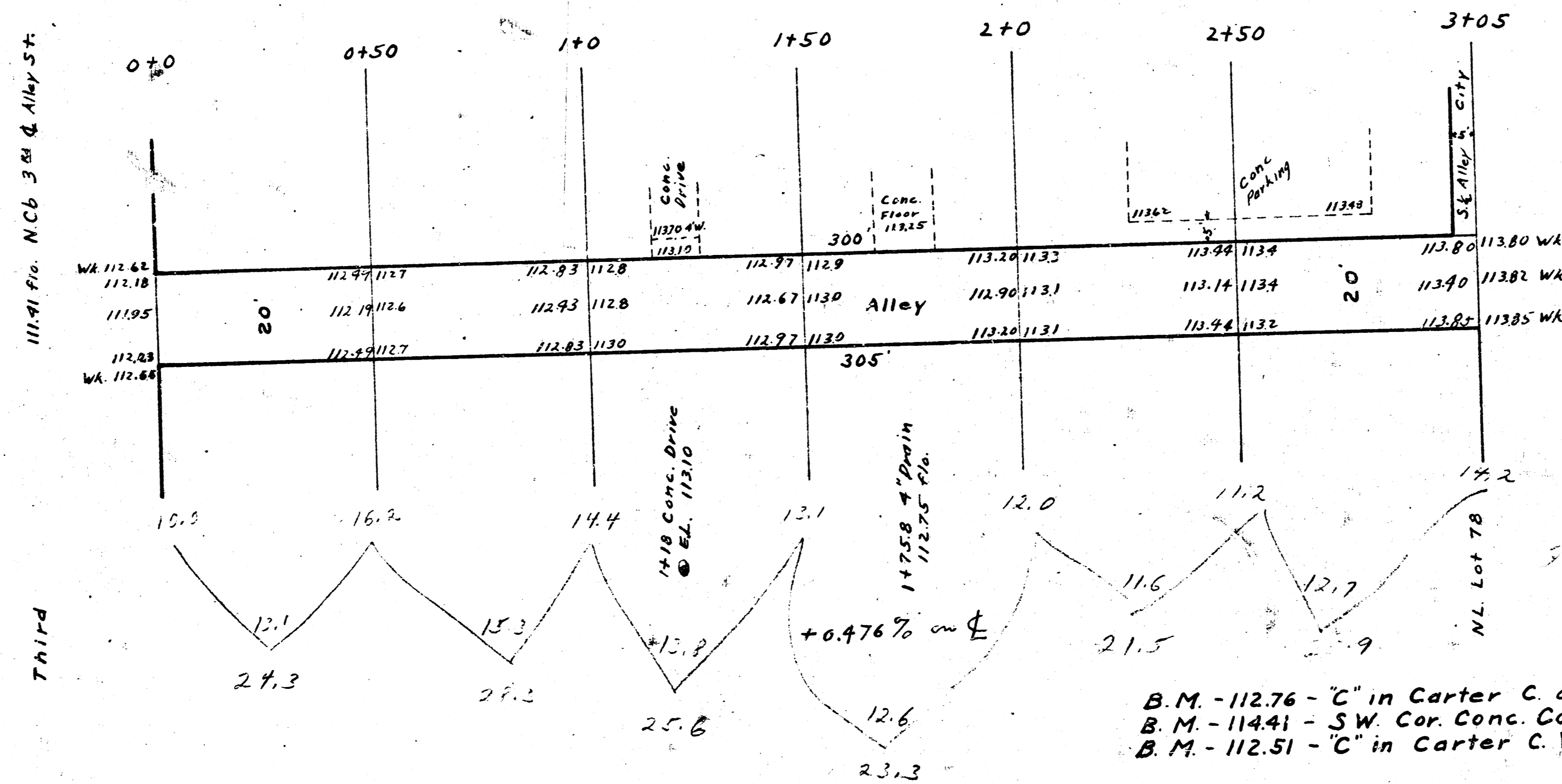


1942
 Alley - Between Topeka & Broadway
 N.L. 3rd to N.L. lot 78 Topeka Ave.
 20' Conc.

M.O. re X Section

11141 ft. E. Co. Broadway W of Sta. 3+05
 112.87 BA. Wk. E.S. Broadway



24.2
 23.2
 25.0
 23.2
 21.5
 25.2
 14.7
 14.9
 10.1

B.M. - 112.76 - "C" in Carter C. of Wk. N.S. Alley E.S. Topeka S. of Central
 B.M. - 114.41 - SW. Cor. Conc. Coping Vent S.S. Cathedral @ C. Alley S.
 B.M. - 112.51 - "C" in Carter C. Wk. E.S. Alley @ N.S. 3rd